

500 PILOT ROAD • SUITE A • LAS VEGAS, NEVADA 89119 • PHONE (702) 263-7111 FAX (702) 263-8111

ENLARGED FLOOR PLANS  
TOILET ACCESSORY SCHEDULE & NOTES

SUMMERLIN ARBORS PARK  
POOL AND POOL BUILDING

RECEIVED  
MAY - 4 2000  
CITY OF LAS VEGAS  
CENTRAL PERMITS

Revisions:  
10-00 - CIVIL COMMENTS  
10-05 - CIVIL COMMENTS

Date: October 22, 1999  
Project No. 9903500

Scale: 1/4" = 1'-0"  
Drawn By: mvc

Sheet Number:  
**A2.20**

**GENERAL NOTES**

1. DIMENSIONS ARE TAKEN FROM FACE OF STUD OR FACE OF MASONRY UNLESS NOTED OTHERWISE ON PLAN.
2. REFER TO SHEET A2.01 FOR DOOR, WINDOW AND WALL TYPE CALLOUTS.
3. REFER TO SHEET A2.42 FOR FINISH FLOOR PLAN.
4. REFER TO SHEET A2.42 FOR FINISHES, COLORS AND MATERIALS.
5. REFER TO CIVIL DRAWINGS FOR ACTUAL FINISH FLOOR ELEVATION.

**KEYNOTES**

1. HANDICAP ACCESSIBLE ELECTRIC WATER COOLER
2. CAST-IN-PLACE CONCRETE BENCH @ 18" AFF.
3. LINE OF STRUCTURE OVERHEAD
4. AMBULATORY HANDICAP STALL
5. HANDICAP ACCESSIBLE LOCKERS W/ ACCESSIBLE HARDWARE. PROVIDE 2 IN EACH LOCKER ROOM IN LOCATIONS SHOWN.
6. T-SHAPED WHEELCHAIR MANUEVERING SPACE. 60" LONG x 36" WIDE AFF.
7. STEEL LOCKERS
8. NOT USED.
9. NOT USED.
10. NOT USED.
11. HANDICAP ACCESSIBLE SHOWER
12. STUD WALLS IN THIS AREA TERMINATE @ 12'-0" AFF.

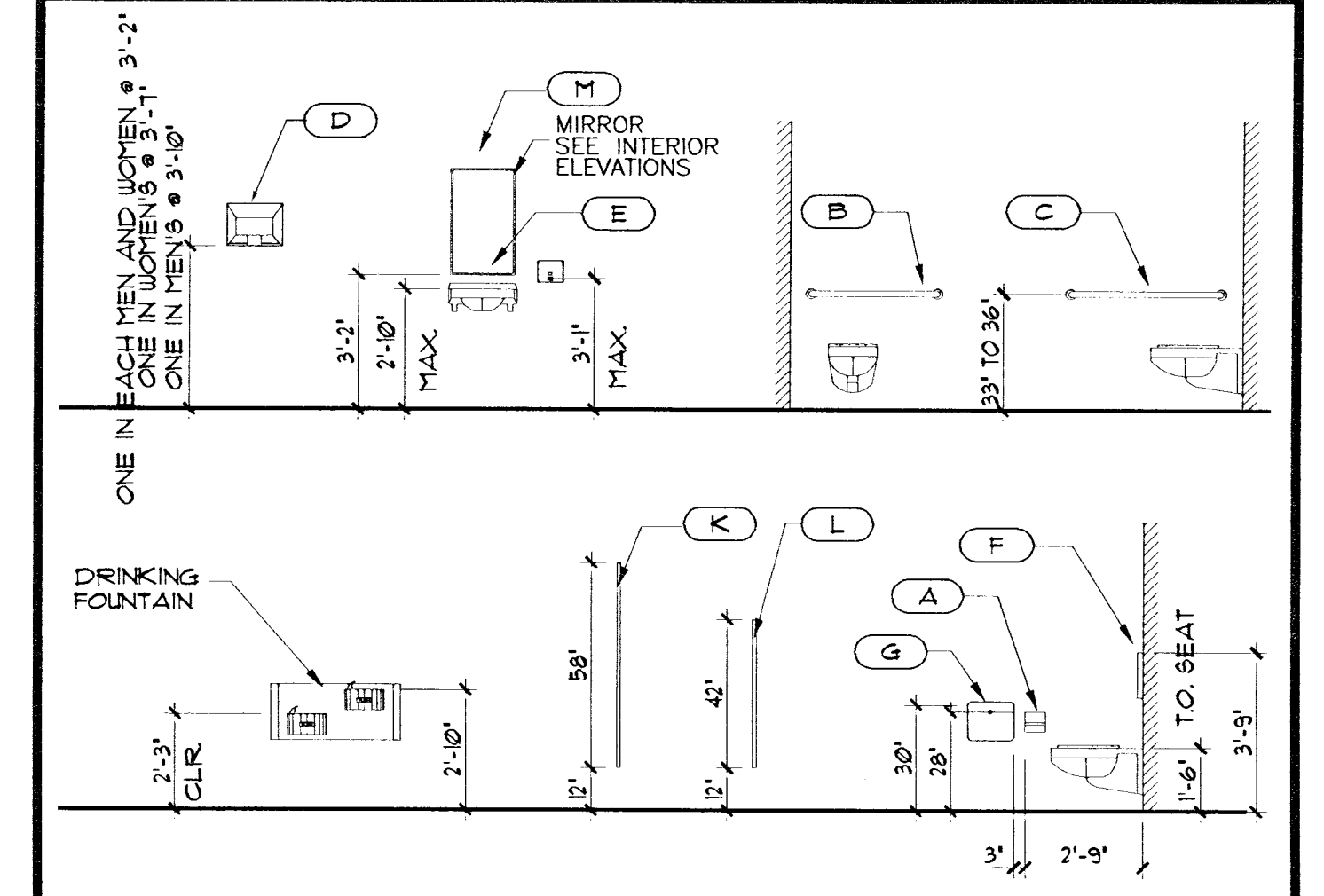
FIELD VERIFY

**TOILET ACCESSORY SCHEDULE**

- (A) SURFACE MOUNTED TOILET TISSUE DISPENSER FOR TWO ROLLS: Bobrick No. B-2140, heavy duty, cast aluminum, satin finish Mount 28" AFF.
- (B) GRAB BAR: Bobrick No. B-6806 series, 36" L, 1 1/2" diameter, satin finish. Surface mounted.
- (C) GRAB BAR: Bobrick No. B-6806 series, 42" L, 1 1/2" diameter, satin finish. Surface mounted.
- (D) RECESSED HAND DRYER: Bobrick No. B-750, AutoPilot Operation, White, 1/8" grey cast iron, enamel finish, 16 gauge box, 1/20 hp motor.
- (E) RECESSED SOAP DISPENSER: Bobrick no. B-306, 18 ga. stainless steel w/ satin finish.
- (F) RECESSED TOILET SEAT COVER DISPENSER: Bobrick No. B-301, 22 ga. stainless steel w/ satin finish. 500 seat cover cap. Mounting Height: 30" to 45" AFF.
- (G) SURFACE-MOUNTED SANITARY NAPKIN DISPOSAL: Bobrick No. B-254, 22 ga. stainless steel w/ satin finish. Mounting Height: 30" AFF.
- (H) PARTITION MOUNTED SANITARY NAPKIN DISPOSAL: Bobrick No. B-4354, 22 ga. stainless steel w/ satin finish. Mounting Height: 30" AFF.
- (J) RECESSED SANITARY NAPKIN/TAMPON VENDOR: Bobrick No. B-43500, 22 ga. approved stainless steel. Finish: Satin stainless steel. Mounting Height: 51" AFF. PLANS APPROVED ARCHITECTURAL Building & Safety Dept. City of Las Vegas, Nevada. JCC JUL 31 2000
- (K) TOILET PARTITION: Floor mounted. Refer to Material Schedule Sheet A2.42 for Material selections.
- (L) URINAL SCREEN: Floor mounted. Refer to Material Schedule Sheet A2.42 for Material selections.
- (M) STAINLESS STEEL FRAMED MIRROR UNITS: Bobrick No. B-1656-2448. Frame with angle shapes not less than 25" (18 ga.) with square corners mitered, welded and ground smooth. Provide bright polished finish. Center mirror above sink, 38" a.f.f. to bottom edge of mirror. Size: 24" W x 48" H.
- (N) STAINLESS STEEL FRAMED MIRROR UNITS: Bobrick No. B-1656-4848. Frame with angle shapes not less than 25" (18 ga.) with square corners mitered, welded and ground smooth. Provide bright polished finish. Center mirror above sink, 38" a.f.f. to bottom edge of mirror. Size: 24" W x 96" H.
- (P) FOLD-UP BABY CHANGING STATION - Broca Baby Quick Change. Polyethylene, off-white with optional lock and steel backer plate.
- (Q) GRAB BAR: Bobrick No. B-680630, 1 1/2" diameter, satin finish, for floor mounting.
- (R) FOLDING SHOWER SEAT: Bobrick No. B-5181, left hand, solid Phenolic wall mounted, steel support bracket system.
- (S) GRAB BAR: Bobrick No. B-680648, 1 1/2" diameter, satin finish, for wall mounting.

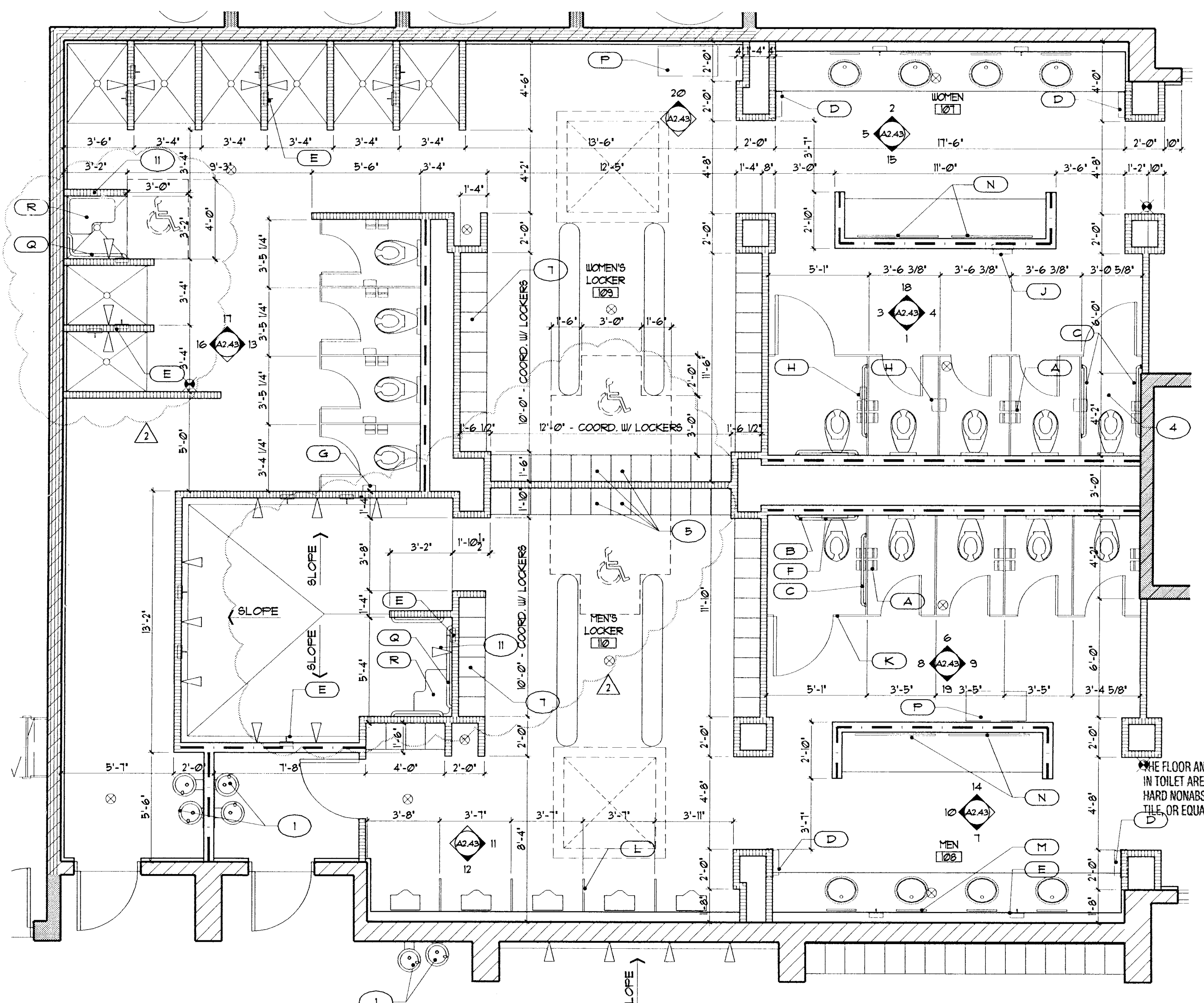
ONE HOUR  
FIRE RESISTIVE  
CONSTRUCTION  
THROUGHOUT

**STANDARD PLUMBING MOUNTING HEIGHTS**

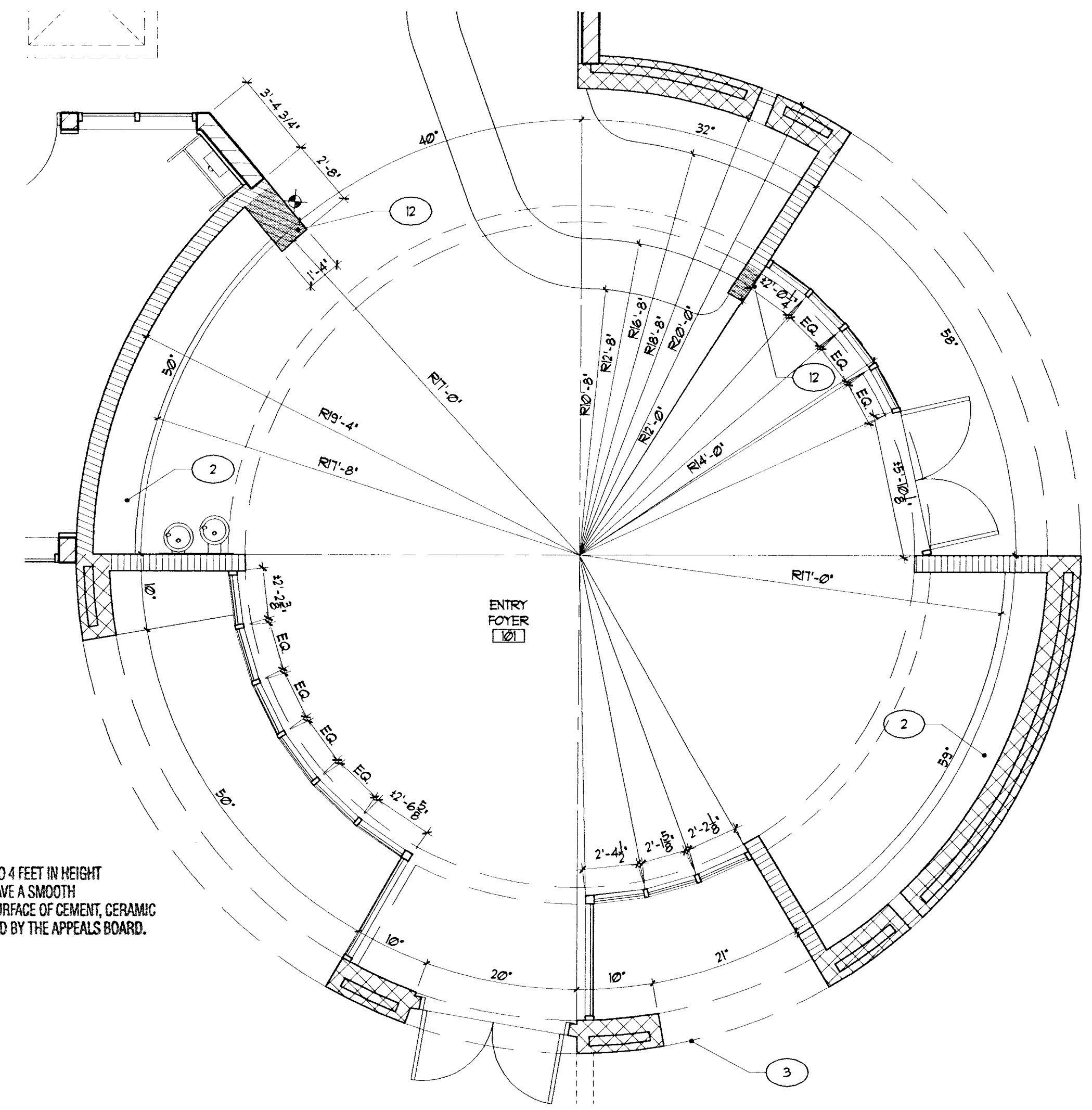


**TOILET ROOM GENERAL NOTES**

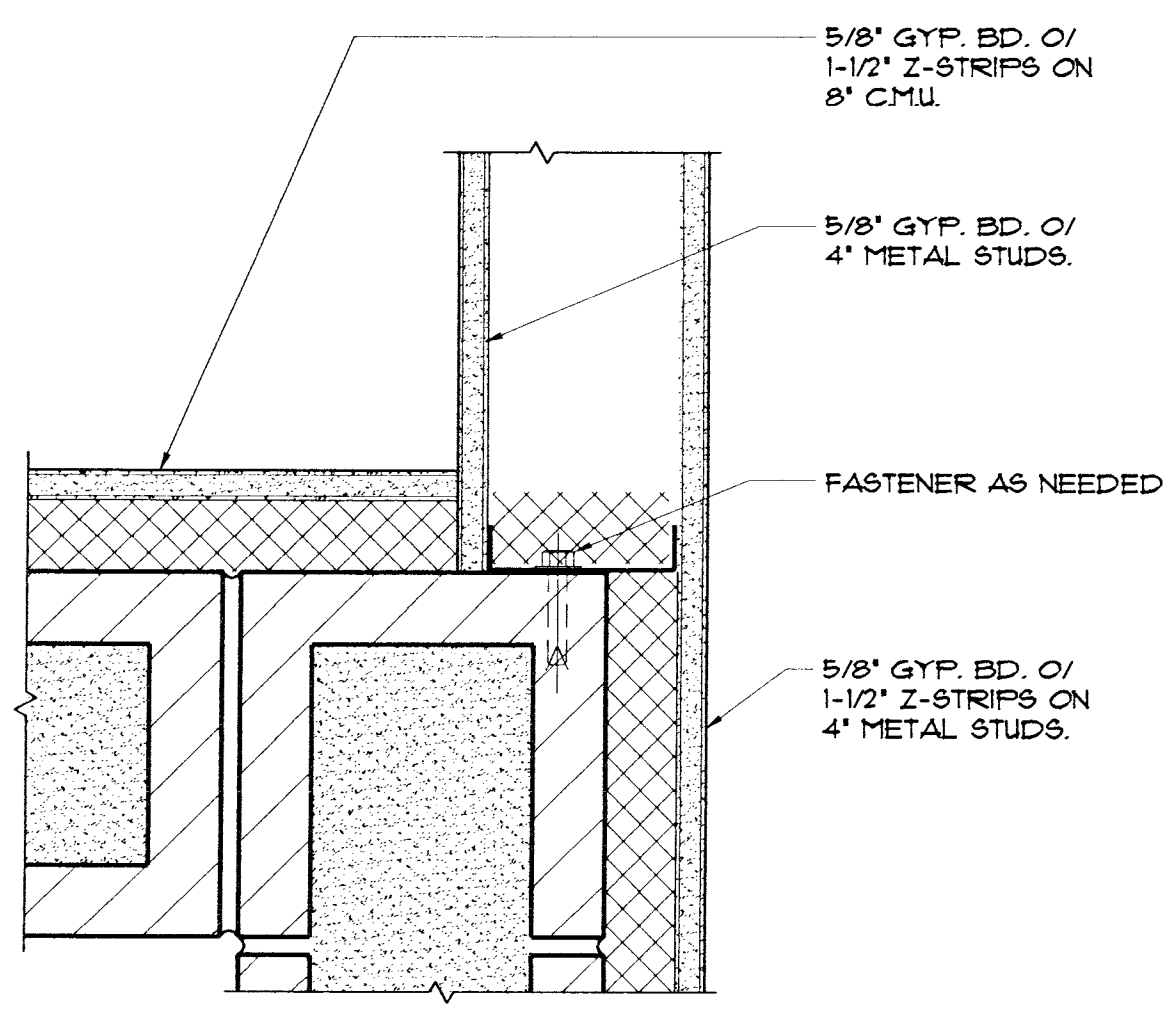
1. Additional mounting heights are as follows: (Dimensions are from top of finish floor - AFF.)  
Lavatory: 30" AFF. to bottom of lip of front face at 21" AFF. bowl projection must be 8" from face of lavatory. Note: All exposed hot water piping to be insulated.  
Drinking fountains: 34" AFF. for accessible unit and 38-42" AFF. for standard unit to top edge of bowl.
2. Contractor shall provide required back-up supports in wall to adequately support toilet room accessories and equipment. Follow manufacturer's recommendations for installation and type and spacing of fasteners. Coordinate rough wall openings.
3. Fixtures, accessories, and equipment shall be mounted in accordance with adopted ADA standards. Refer also to standard plumbing mounting heights.
4. For plumbing fixture types, refer to plumbing.
5. Toilet partition mfr. shall coordinate required openings w/ toilet accessory mfr.
6. See Detail 9/A2.20 for typical Lavatory Counter section at Toilet Rooms, provide cont. 18 ga. studs @ wall behind lavatories.



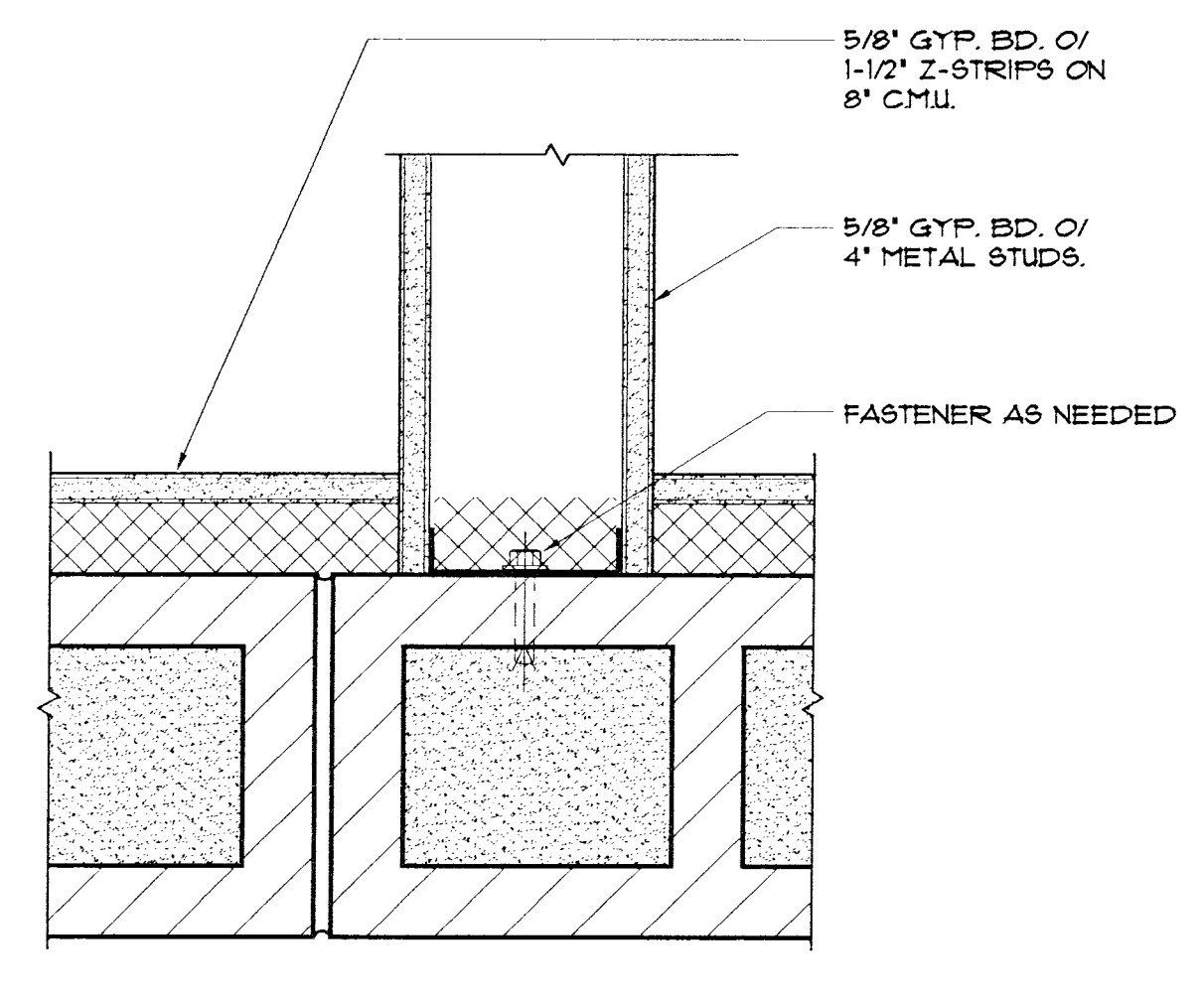
**TOILET AND LOCKER ROOM PLANS**  
SCALE: 1/4" = 1'-0"



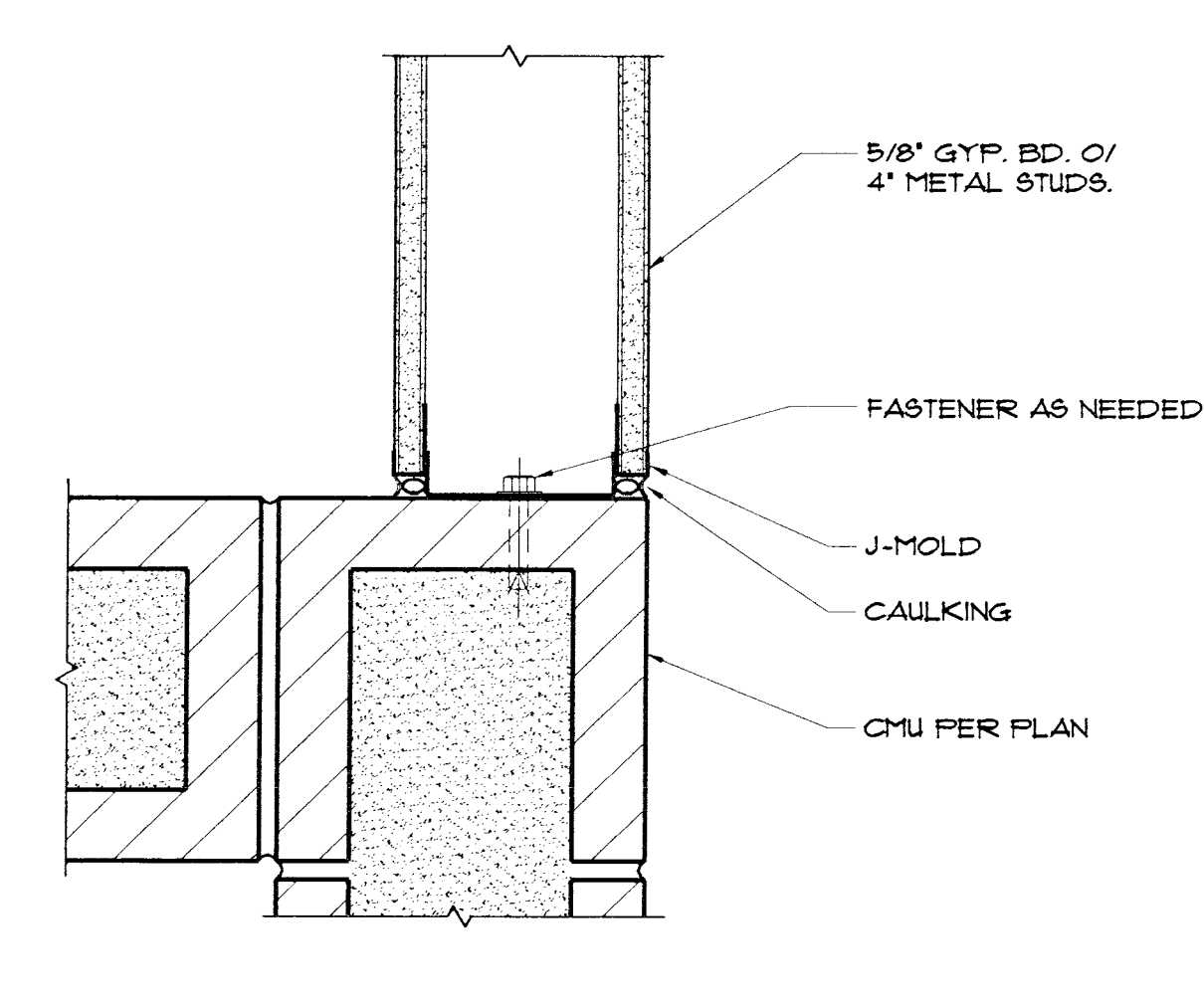
**ENTRY FOYER PLAN**  
SCALE: 1/4" = 1'-0"



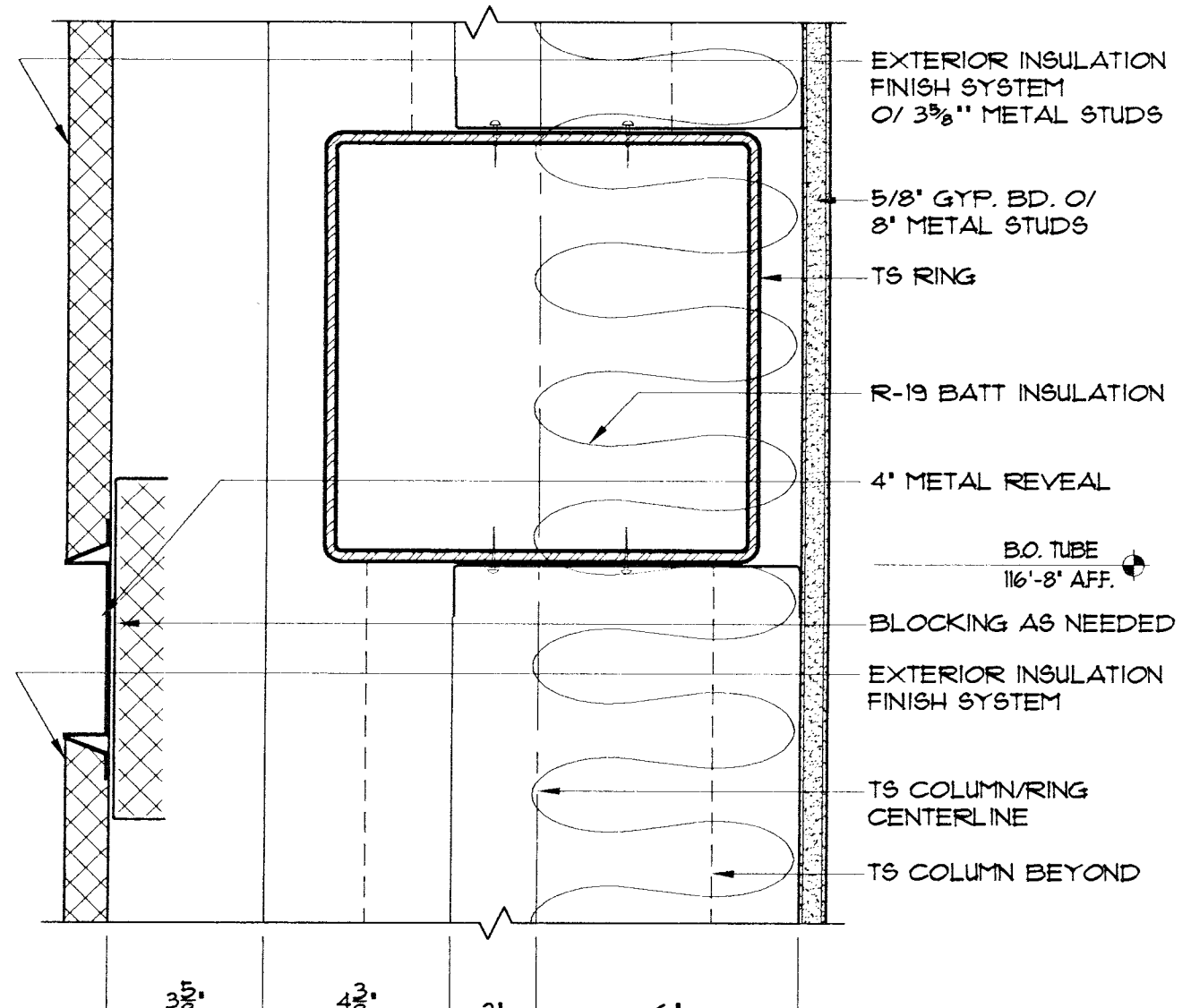
**WALL INTERSECTION**  
SCALE: 3" = 1'-0"



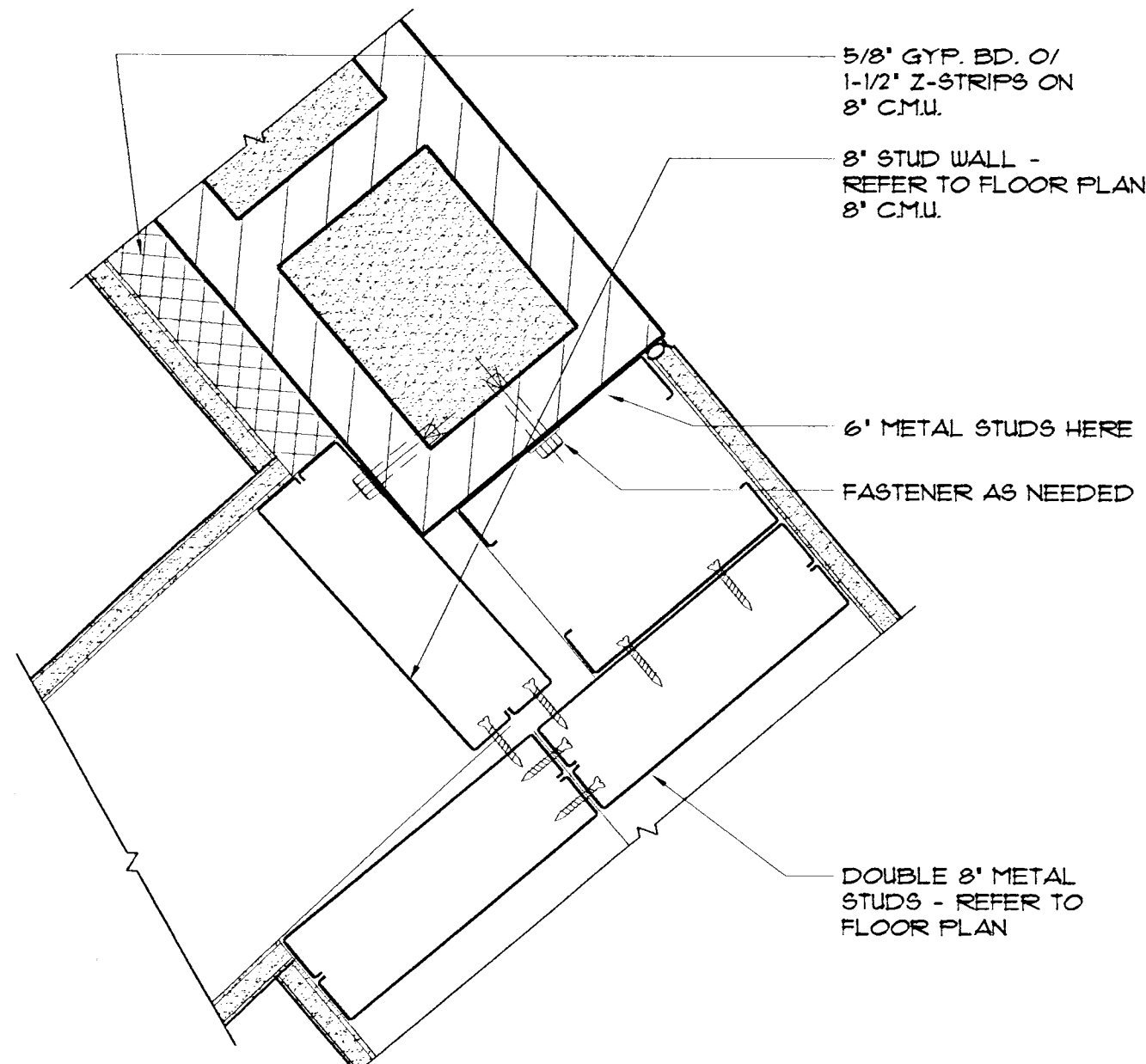
**WALL INTERSECTION**  
SCALE: 3" = 1'-0"



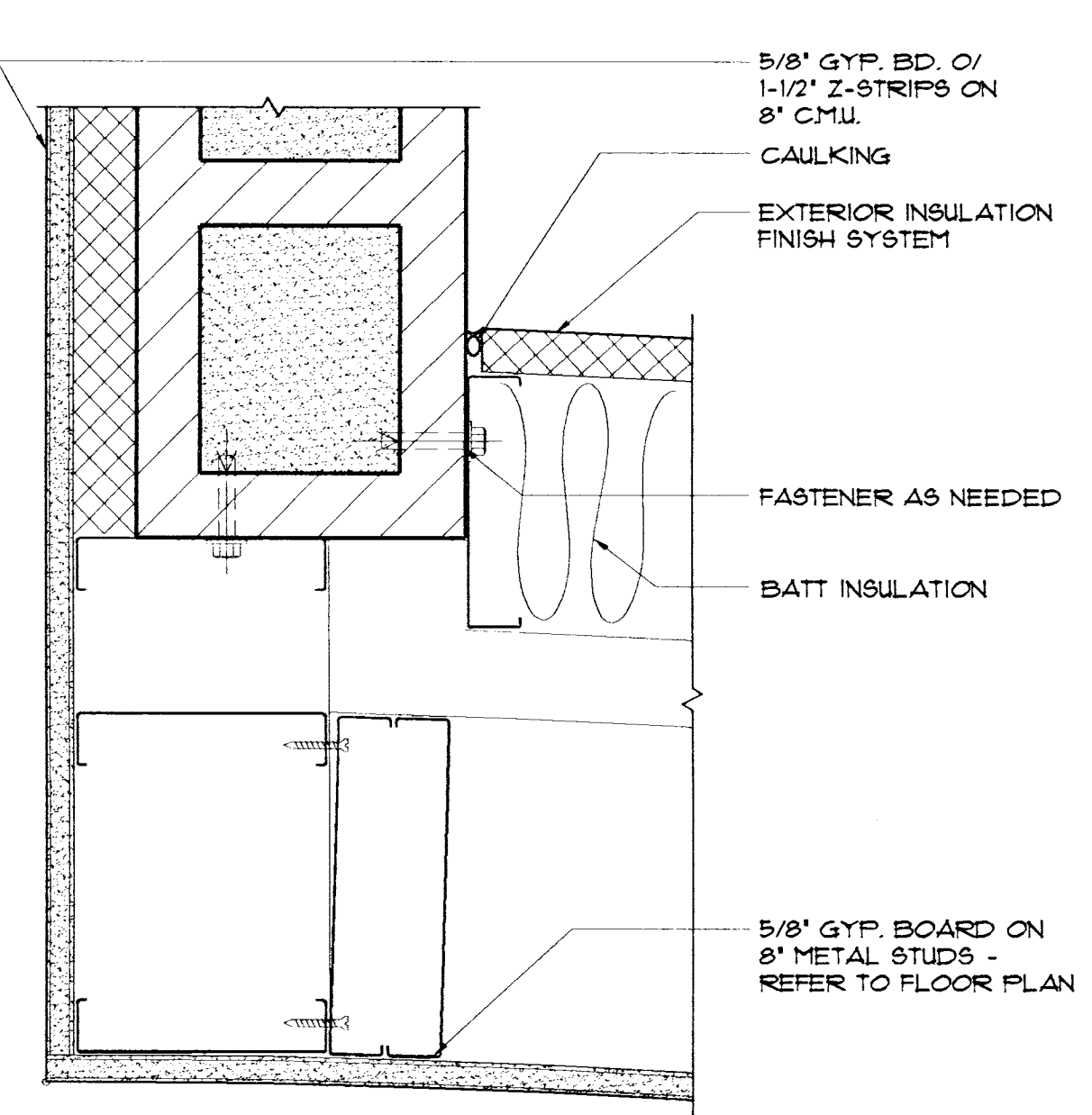
**WALL INTERSECTION**  
SCALE: 3" = 1'-0"



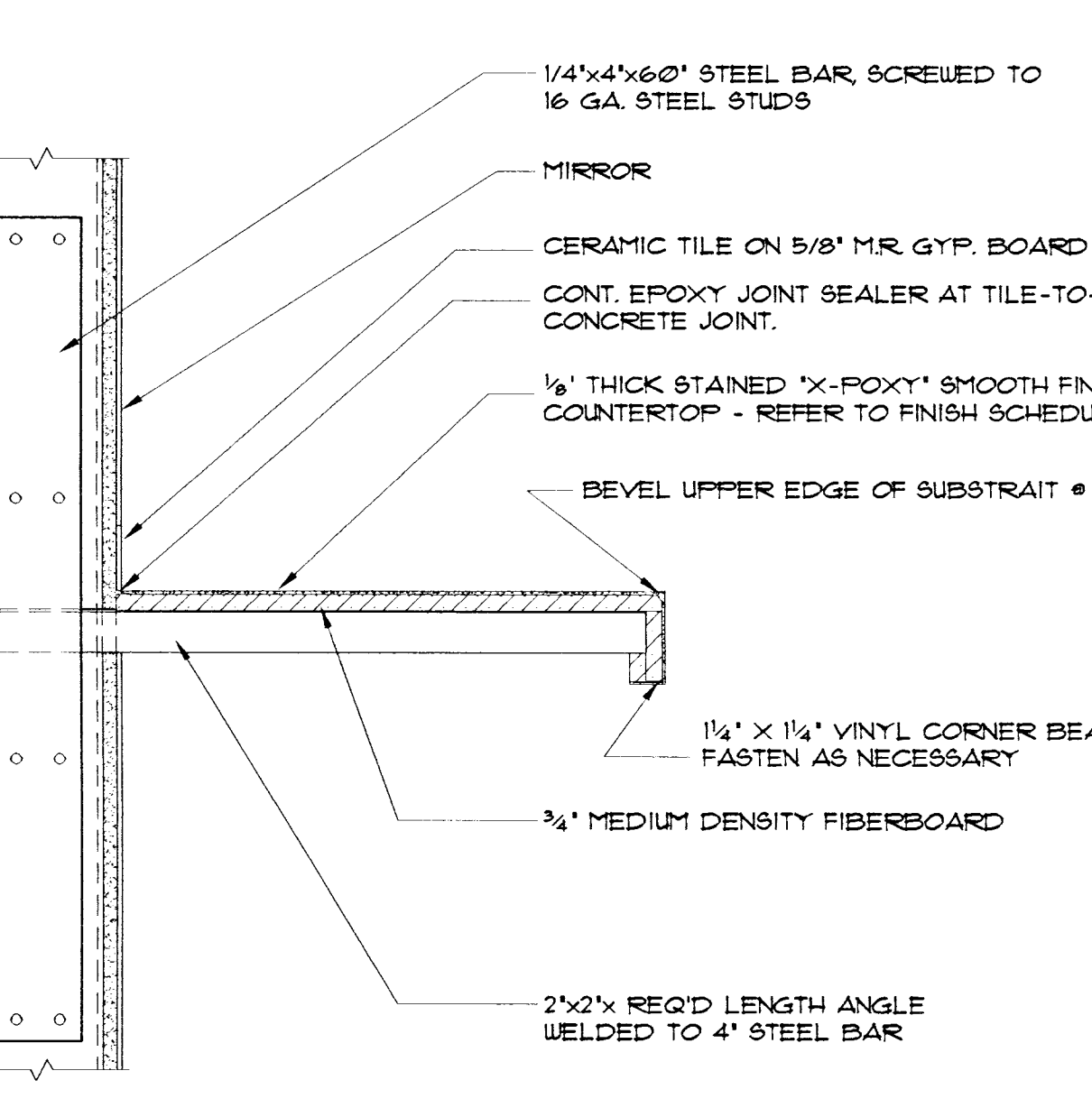
**DETAIL @ TUBE RING**  
SCALE: 3" = 1'-0"



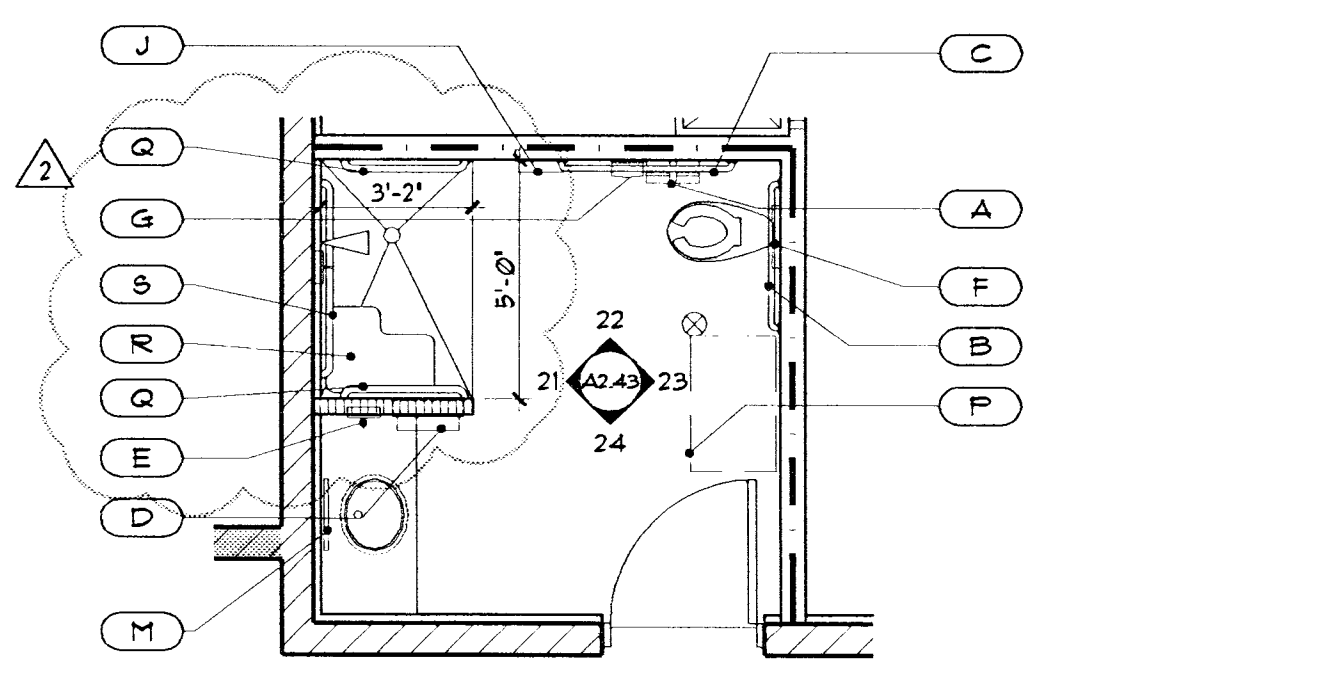
**WALL INTERSECTION**  
SCALE: 3" = 1'-0"



**WALL INTERSECTION**  
SCALE: 3" = 1'-0"



**LAVATORY/COUNTER TOP**  
SCALE: 1 1/2" = 1'-0"



**FAMILY RESTROOM/SHOWER**  
SCALE: 1/4" = 1'-0"