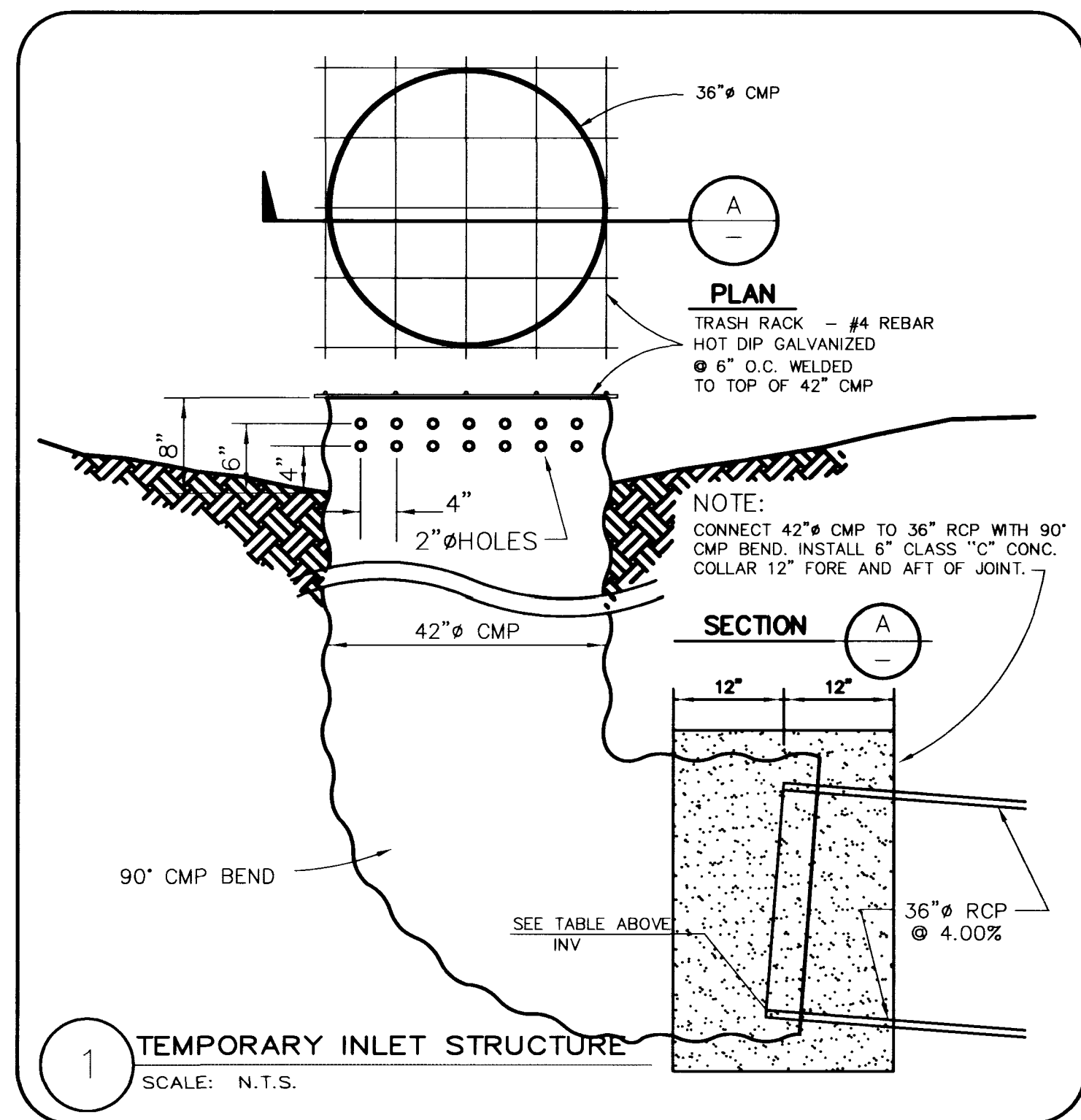
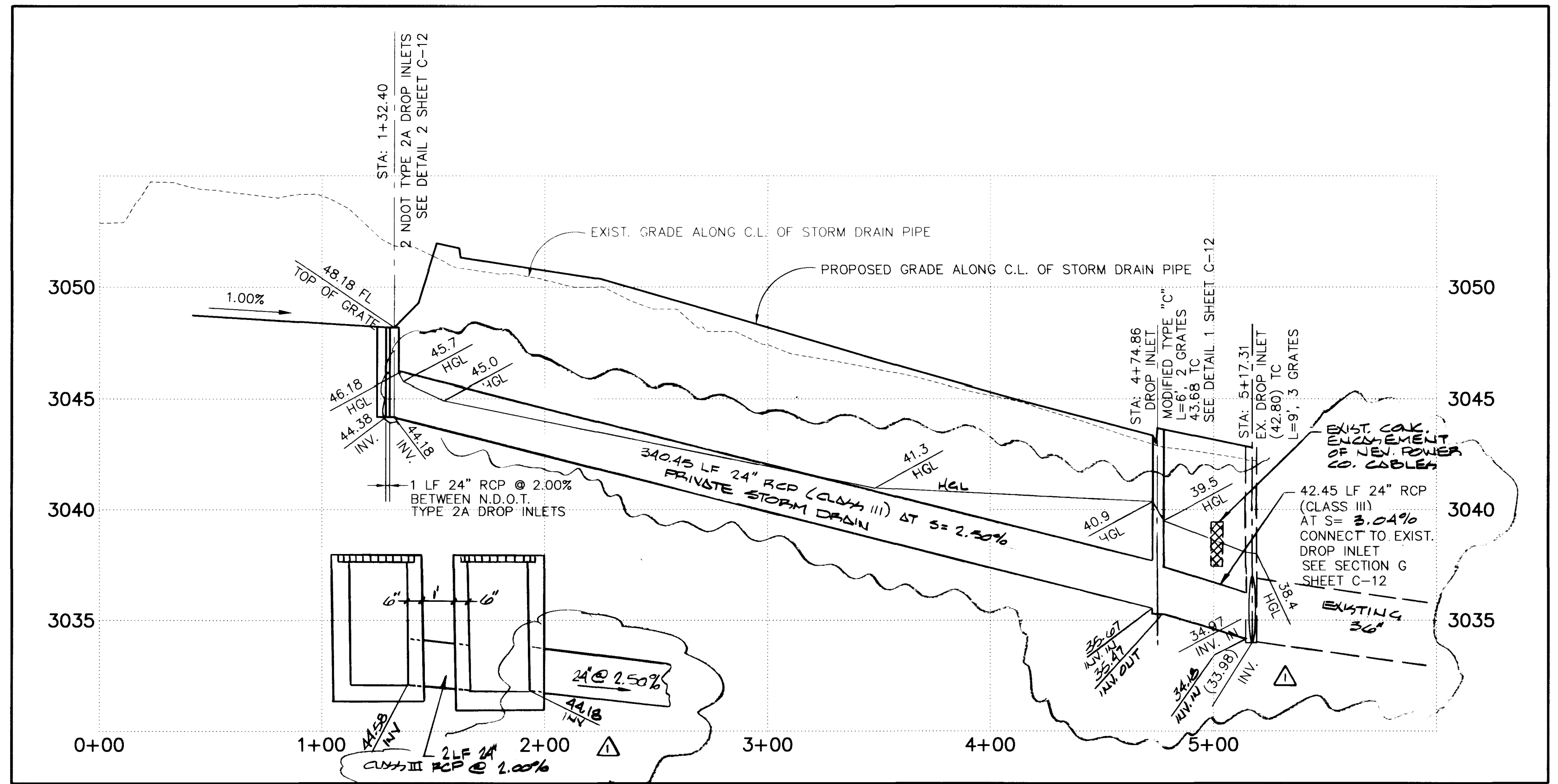


STORM DRAIN LATERAL PROFILE

SCALE : HORIZ. 1" = 40'
VERT. 1" = 4'

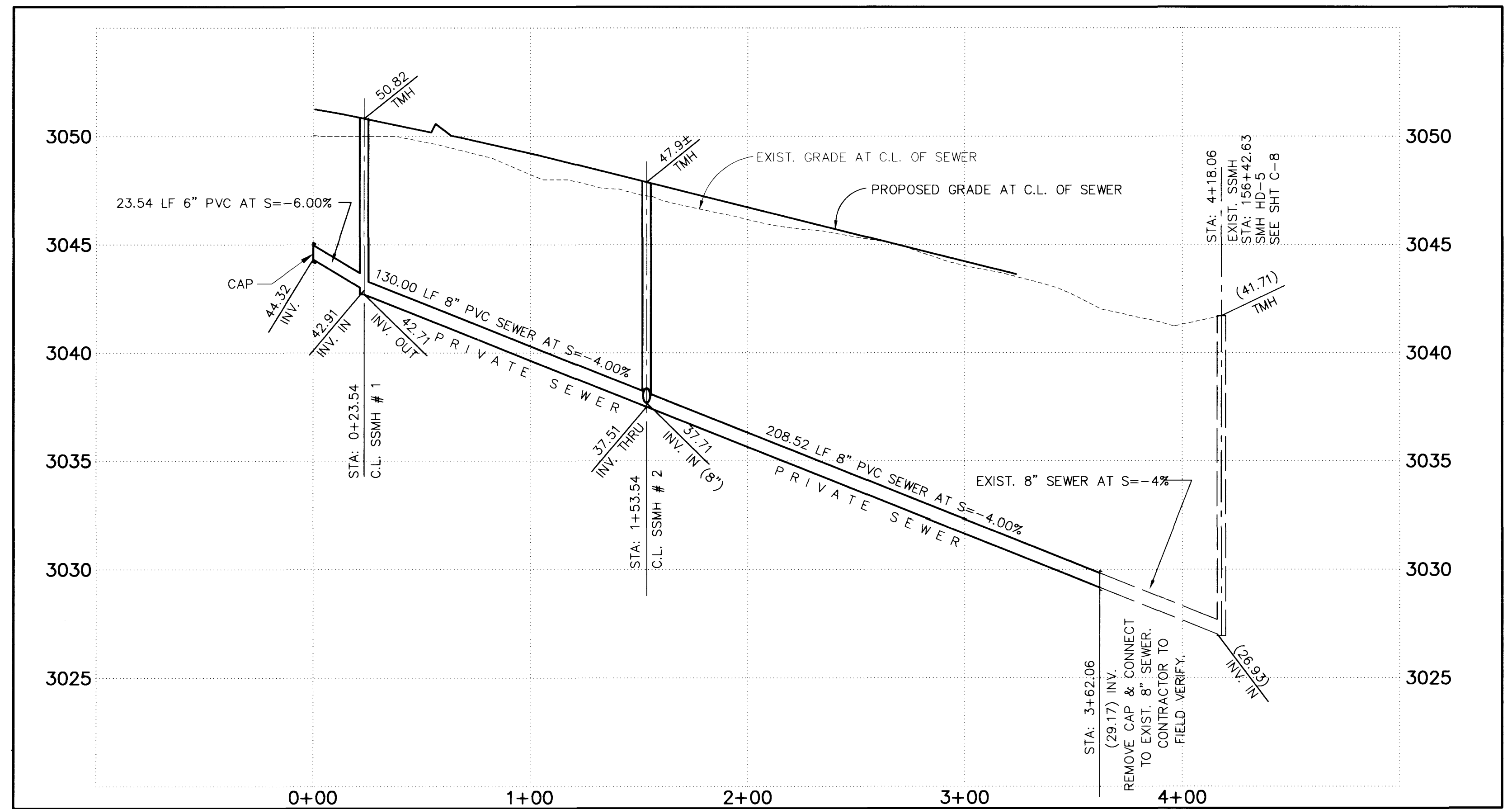


1 TEMPORARY INLET STRUCTURE
SCALE: N.T.S.



STORM DRAIN PROFILE

SCALE : HORIZ. 1" = 40'
VERT. 1" = 4'



SEWER PROFILE

SCALE : HORIZ. 1" = 40'
VERT. 1" = 4'

BASIS OF BEARING
N 01°12'43" E IS BASED ON THE NEVADA STATE GRID SYSTEM (EAST ZONE) AS DETERMINED FROM THE TRIANGULATION POINTS "RED ROCK" TO "LONE MOUNTAIN".

BENCHMARK

2909.769	NGVD 1929 DATUM
2912.24	NAVD 1988 DATUM (887.6503 M)
2910.05	SUMMERLIN DATUM

• THIS PROJECT BASED ON SUMMERLIN DATUM

DATE: 12/17/88
REVISION: 12/17/88
DESCRIPTION: CLEAN UP OF EXISTING STORM DRAIN TO PRIVATE STORM DRAIN

RECOMMENDED: CHRISTOPHER W. ANDERSON
P.E. NO. 5071

STATE OF NEVADA
REGISTERED PROFESSIONAL ENGINEER
NO. 194

G. C. WALLACE, INC.
Engineering/Architecture
1585 SOUTH RAINBOW BLVD. LAS VEGAS, NEVADA 89102 (702) 363-1200
SUMMERLIN DIVISION: (702) 363-0891

SUMMERLIN
VILLAGE 11/12 UNIT 2A
THE ARBORS SPORTS PARK PHASE I
PARKING LOT, POOL, POOL HOUSE & BALLFIELDS
DETAILS

SHEET
C-10
SHT 10 OF 12

JOB NO. 398.178

F:\398-178\dwg\mrcv\PHASE1\S01-RP2.dwg Sat Jun 27 09:40:56 1998 RICK STRUTZ

