

**PAVILION CENTER DRIVE SCHOOL
(UNDER CONSTRUCTION)
CLV # 715-122**

**SPORTS PARK DRIVE
SEE SHEET C-9
FOR PROFILE**

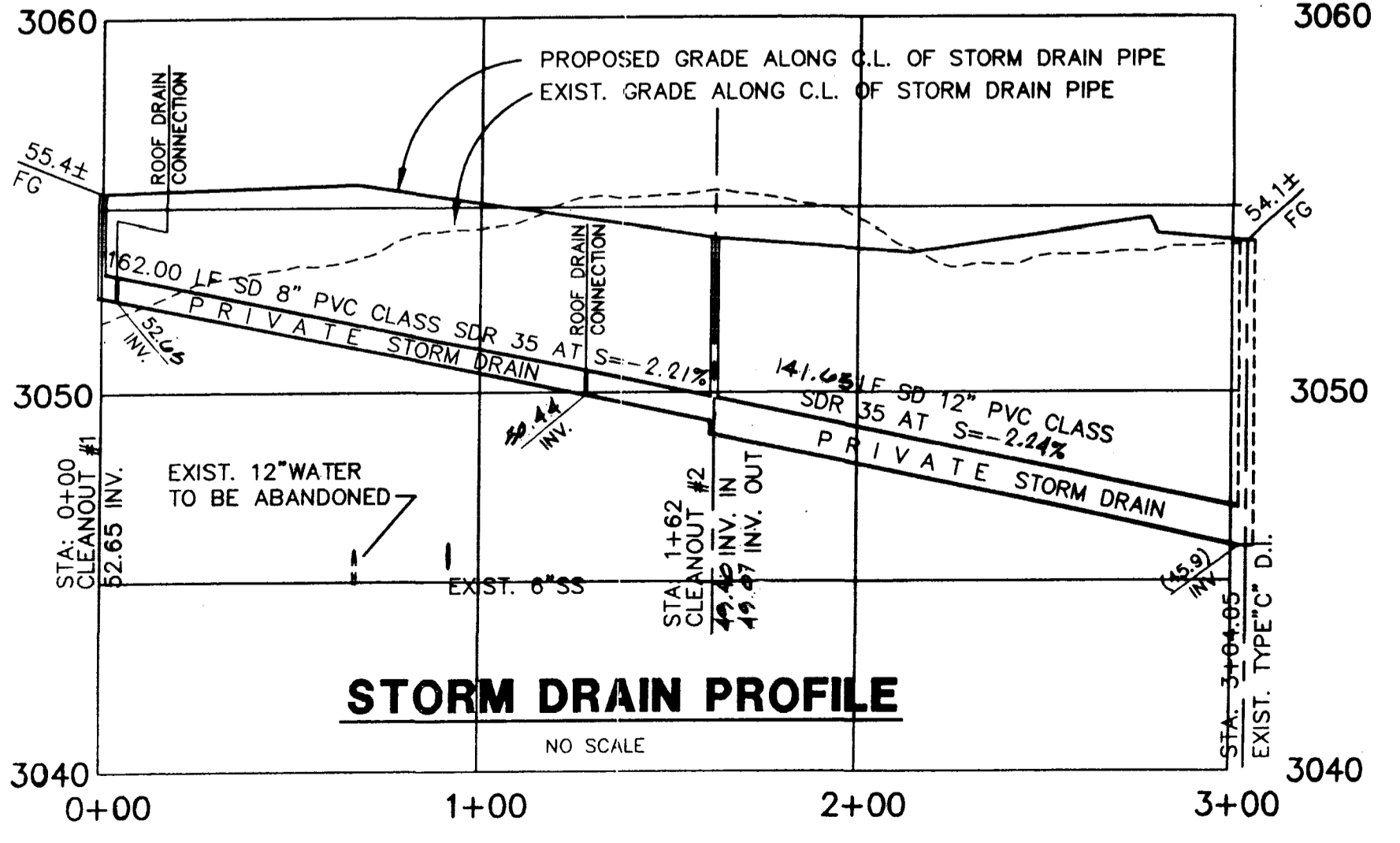
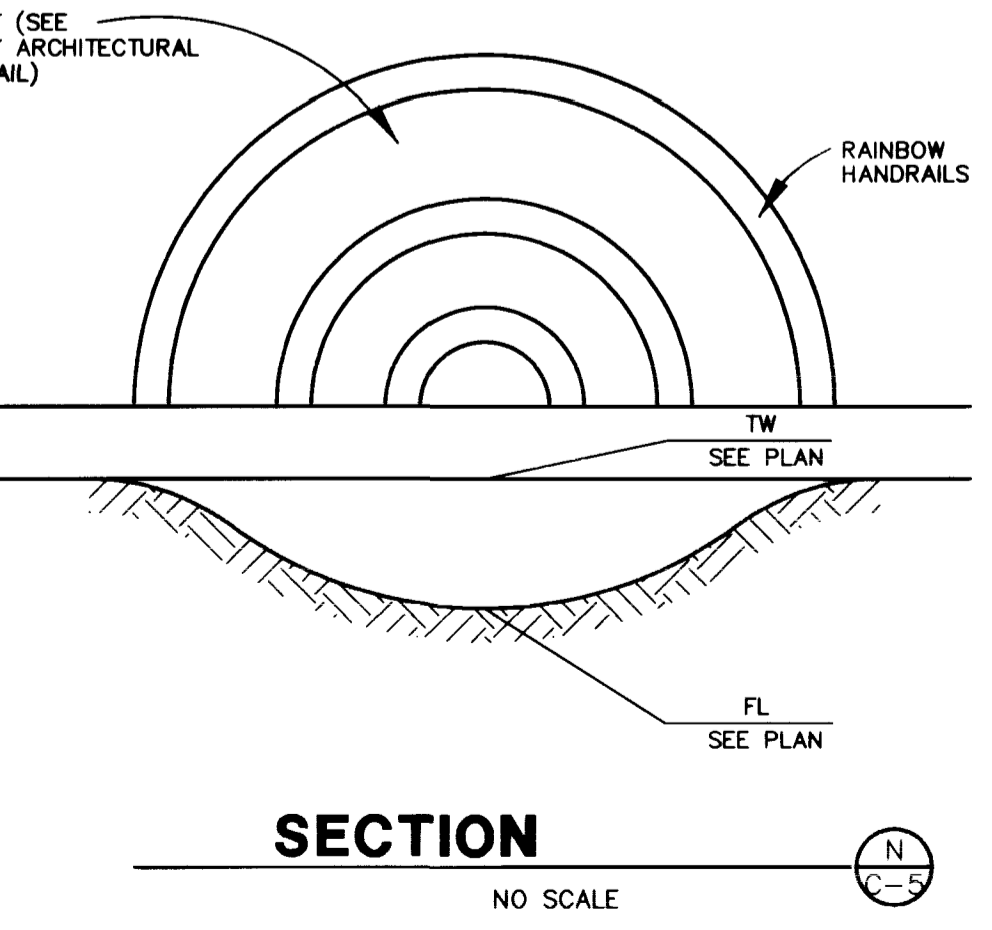
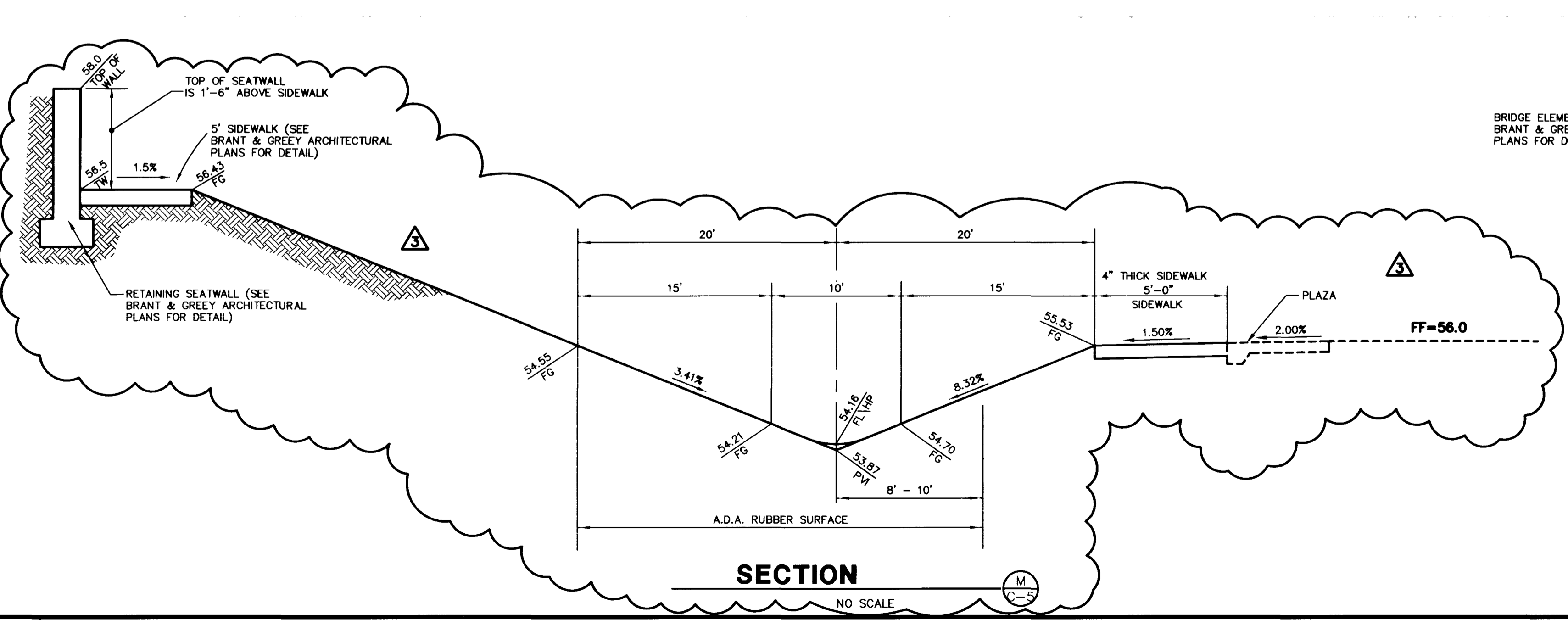
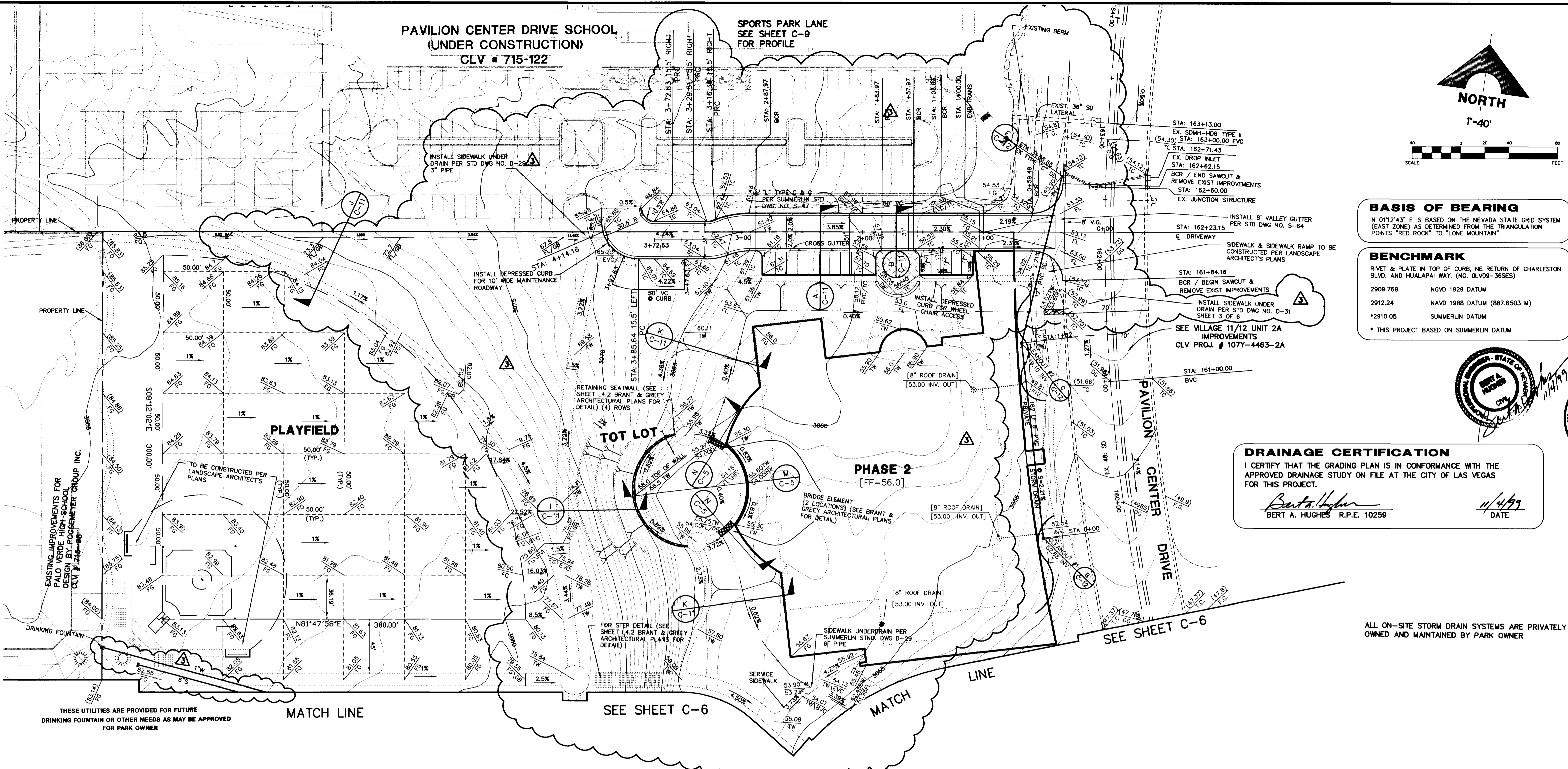


BASIS OF BEARING
N 01°12'43" E IS BASED ON THE NEVADA STATE GRID SYSTEM (EAST ZONE) AS DETERMINED FROM THE TRIANGULATION POINTS "RED ROCK" TO "LOVE MOUNTAIN".

BENCHMARK
RIVET & PLATE IN TOP OF CURB, NE RETURN OF CHARLESTON BLVD. AND HUALAPAI WAY. (NO. 0LV09-36SES)
2909.769 NGVD 1929 DATUM
2912.24 NAVD 1988 DATUM (887.6503 M)
*2910.05 SUMMERLIN DATUM
* THIS PROJECT BASED ON SUMMERLIN DATUM

DRAINAGE CERTIFICATION
I CERTIFY THAT THE GRADING PLAN IS IN CONFORMANCE WITH THE APPROVED DRAINAGE STUDY ON FILE AT THE CITY OF LAS VEGAS FOR THIS PROJECT.
Bert A. Hughes 11/4/99
BERT A. HUGHES R.P.E. 10259 DATE

ALL ON-SITE STORM DRAIN SYSTEMS ARE PRIVATELY OWNED AND MAINTAINED BY PARK OWNER



DATE: 11/4/99
AGENCY: REVISED UTILITIES
DESCRIPTION: GRADES, REVISIONS
REV. DATE: 6/18/99
REV. DESCRIPTION: REV. SHARED ENTRY, WALKWAY & ANDERSON
P.E. NO.: 5071
RECOMMENDED BY: CHRISTOPHER W. ANDERSON
STATE OF NEVADA
REGISTERED PROFESSIONAL ENGINEER
G. C. WALLACE, INC.
Engineering/Architecture
1555 SOUTH RAINBOW BLVD., LAS VEGAS, NEVADA 89102 (702) 363-1200
SUMMERLIN DIVISION (702) 262-9991
SUMMERLIN VILLAGE 11/12 UNIT 2A
THE ARBORS SPORTS PHASE I
PARKING LOT, POOL, POOL HOUSE & BALLFIELDS
GRADING PLAN 1
SHEET
C-5
SHT 5 OF 12
JOB NO. 398-1786

F:\398\1786\dwg\Tops\Rev3\398-1786-1.dwg Thu Nov 04 13:40:18 1999

18944

THIS IS A REPRINT 550.49-1

