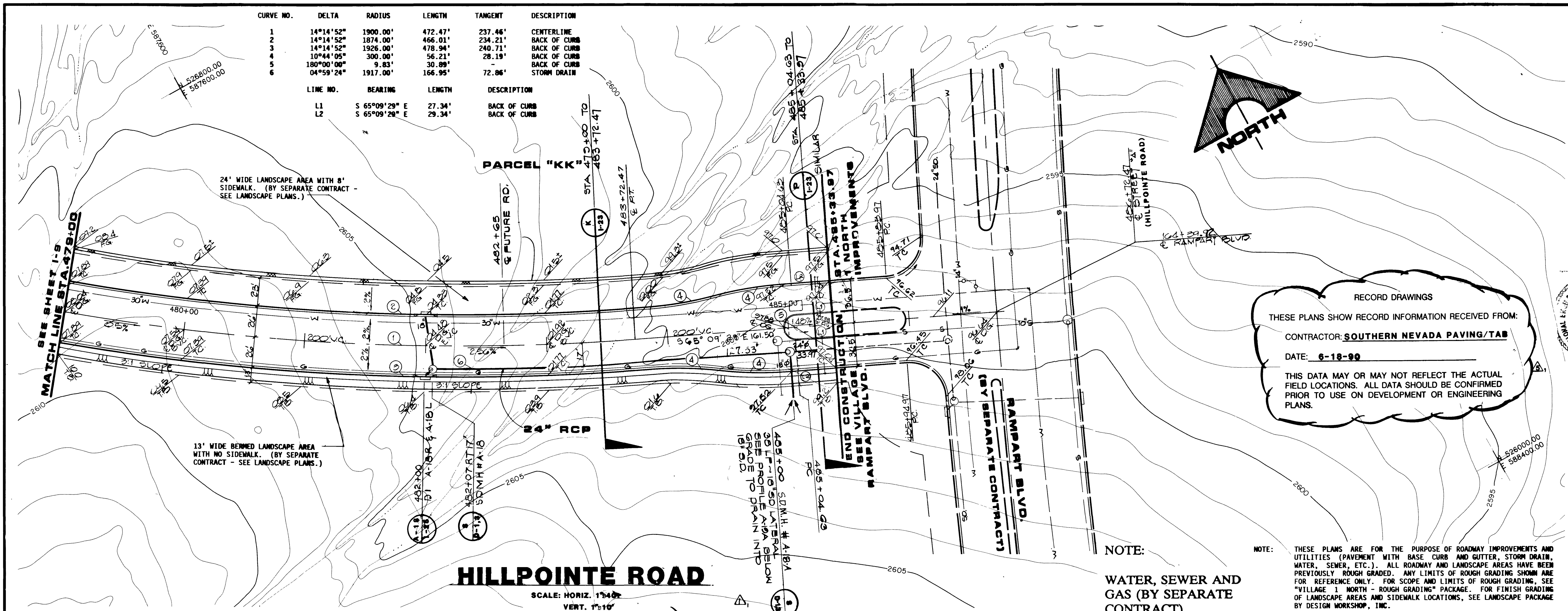


JOB NO. 620.314

CURVE NO.	DELTA	RADIUS	LENGTH	TANGENT	DESCRIPTION
1	14°14'52"	1900.00'	472.47'	237.46'	CENTERLINE
2	14°14'52"	1874.00'	466.01'	234.21'	BACK OF CURB
3	14°14'52"	1926.00'	478.94'	240.71'	BACK OF CURB
4	10°44'05"	300.00'	56.21'	28.19'	BACK OF CURB
5	180°00'00"	9.83'	30.89'	30.89'	BACK OF CURB
6	04°58'24"	1917.00'	166.95'	72.86'	STORM DRAIN

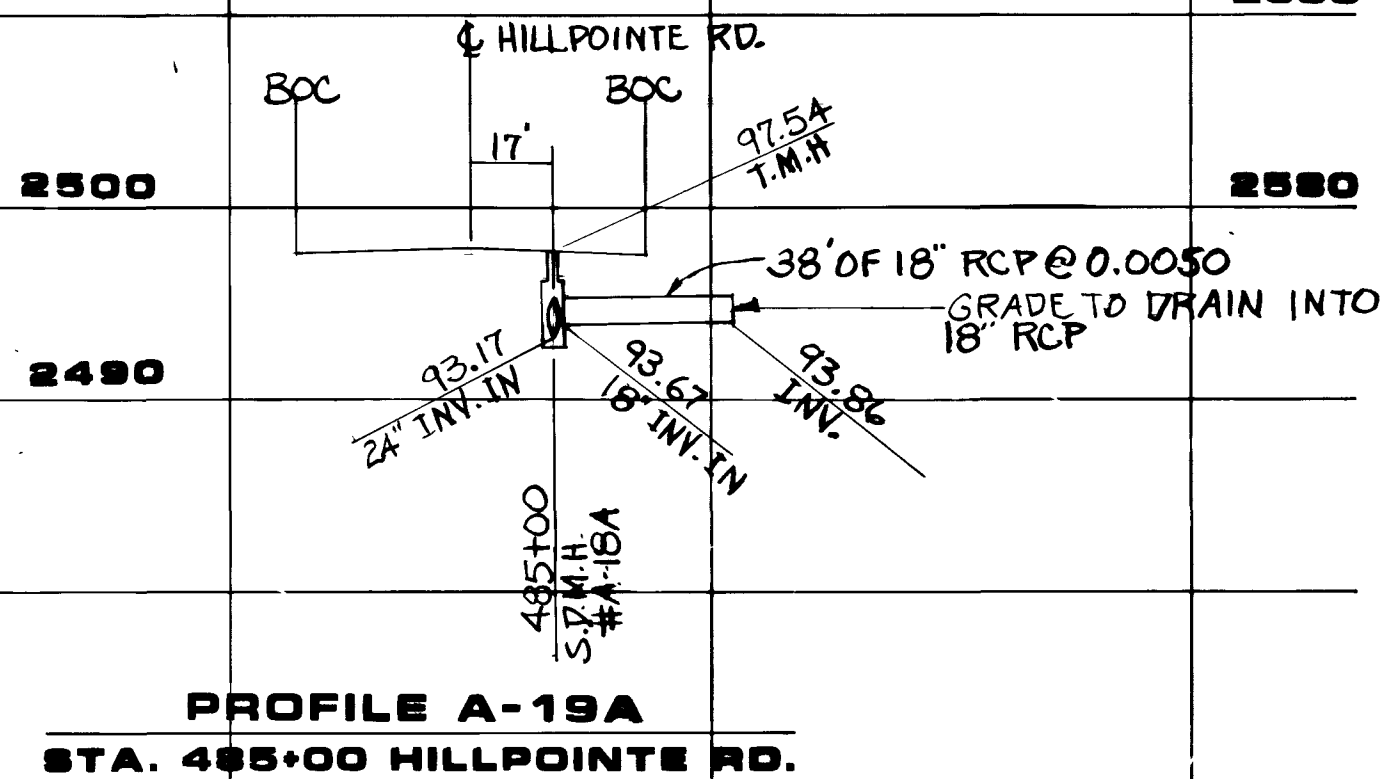
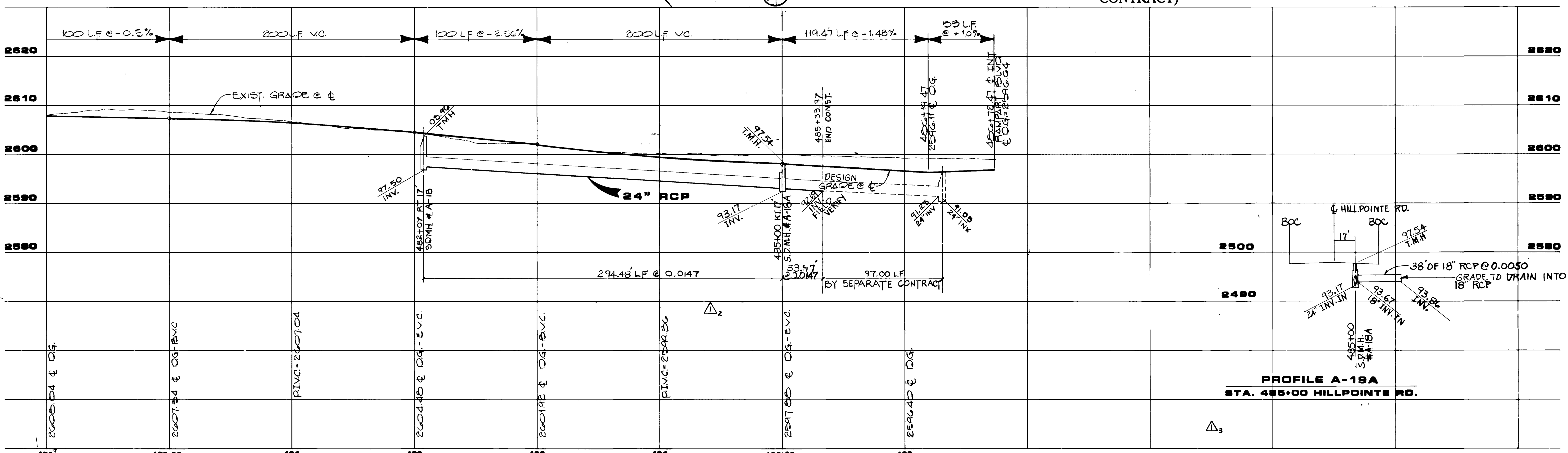
LINE NO.	BEARING	LENGTH	DESCRIPTION
L1	S 65°09'29" E	27.34'	BACK OF CURB
L2	S 65°09'29" E	29.34'	BACK OF CURB



RECORD DRAWINGS
 THESE PLANS SHOW RECORD INFORMATION RECEIVED FROM:
 CONTRACTOR: SOUTHERN NEVADA PAVING/TAB
 DATE: 6-18-90
 THIS DATA MAY OR MAY NOT REFLECT THE ACTUAL FIELD LOCATIONS. ALL DATA SHOULD BE CONFIRMED PRIOR TO USE ON DEVELOPMENT OR ENGINEERING PLANS.

NOTE: THESE PLANS ARE FOR THE PURPOSE OF ROADWAY IMPROVEMENTS AND UTILITIES (PAVEMENT WITH BASE CURB AND GUTTER, STORM DRAIN, WATER, SEWER, ETC.). ALL ROADWAY AND LANDSCAPE AREAS HAVE BEEN PREVIOUSLY ROUGH GRADED. ANY LIMITS OF ROUGH GRADING SHOWN ARE FOR REFERENCE ONLY. FOR SCOPE AND LIMITS OF ROUGH GRADING, SEE "VILLAGE 1 NORTH - ROUGH GRADING" PACKAGE. FOR FINISH GRADING OF LANDSCAPE AREAS AND SIDEWALK LOCATIONS, SEE LANDSCAPE PACKAGE BY DESIGN WORKSHOP, INC.

HILLPOINTE ROAD
 SCALE: HORIZ. 1"=40'
 VERT. 1"=10'



REV	DATE	DESCRIPTION
A	8/7/88	ISSUE TO BID
B	11/15/89	ISSUE TO CONSTRUCT/REVISION#1
C	6/18/90	RECORD DRAWING

DESIGNER: G.C. WALLACE, INC.
 ENGINEERING/ARCHITECTURE

1555 SOUTH RAINBOW BLVD., LAS VEGAS, NEVADA 89102

HOWARD HUGHES PROPERTIES
 VILLAGE 1 NORTH IMPROVEMENTS
 HILLPOINTE ROAD PLAN & PROFILE,
 STA. 478+00 TO 488+78.47

SHEET 13
1-10
 13 OF 28 SHEETS

1879 15353 107-11695

