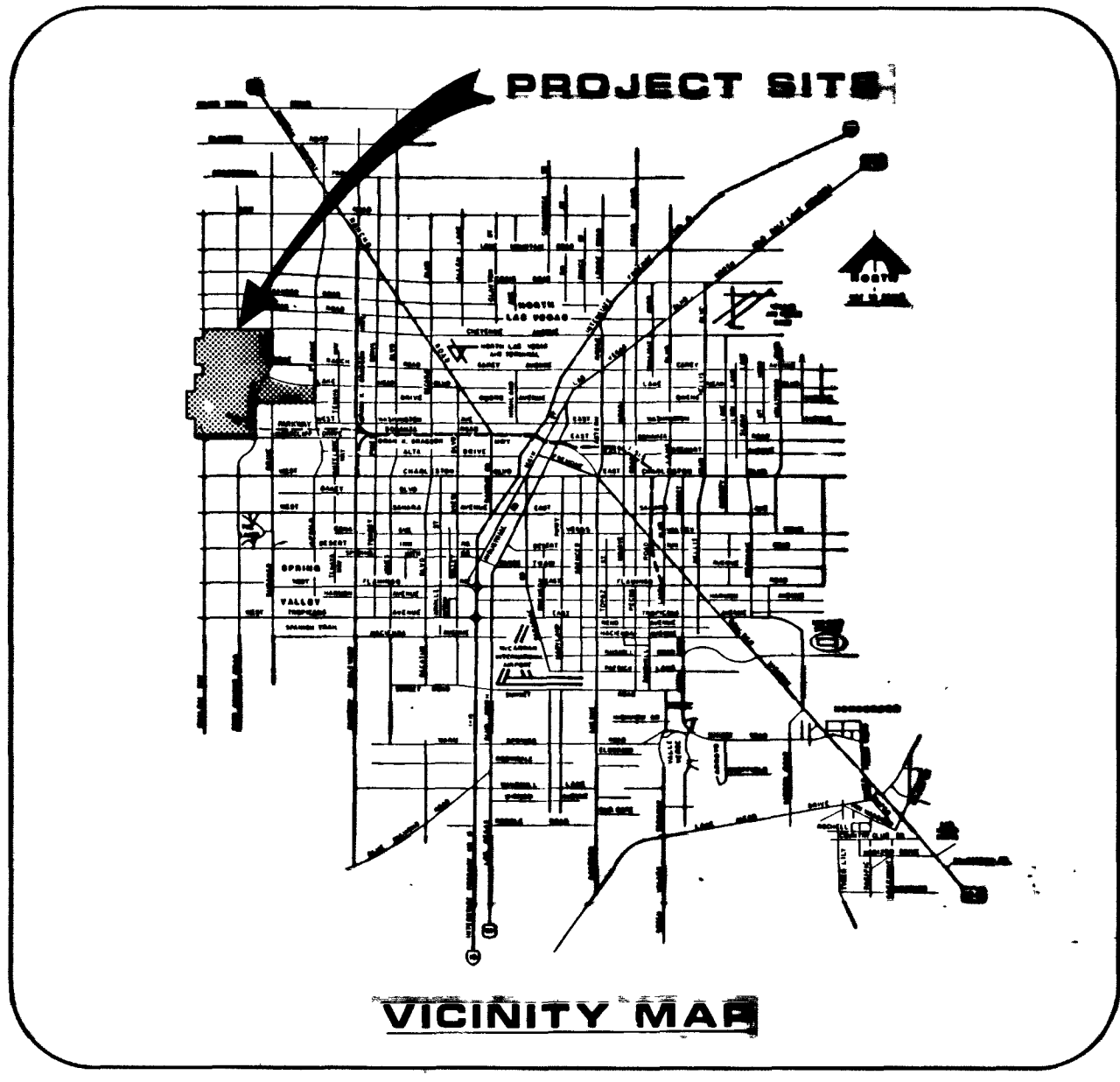
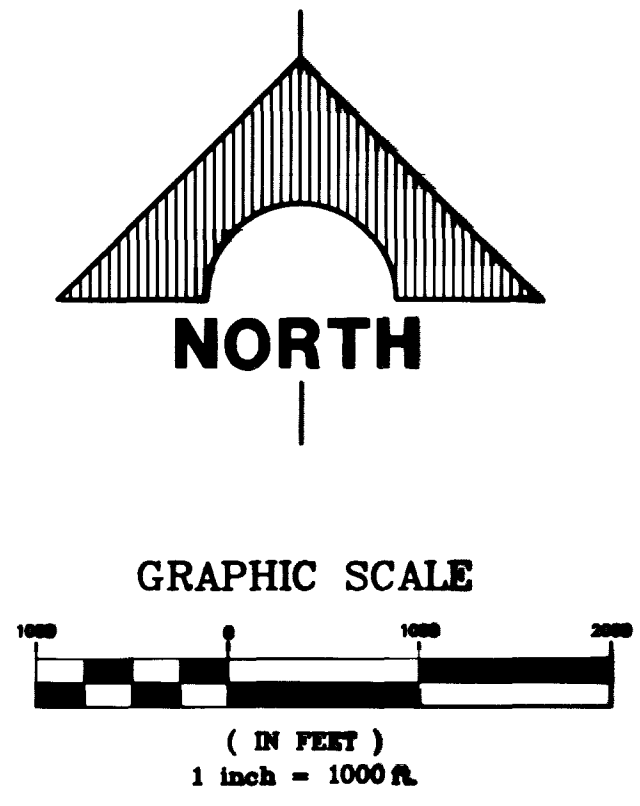
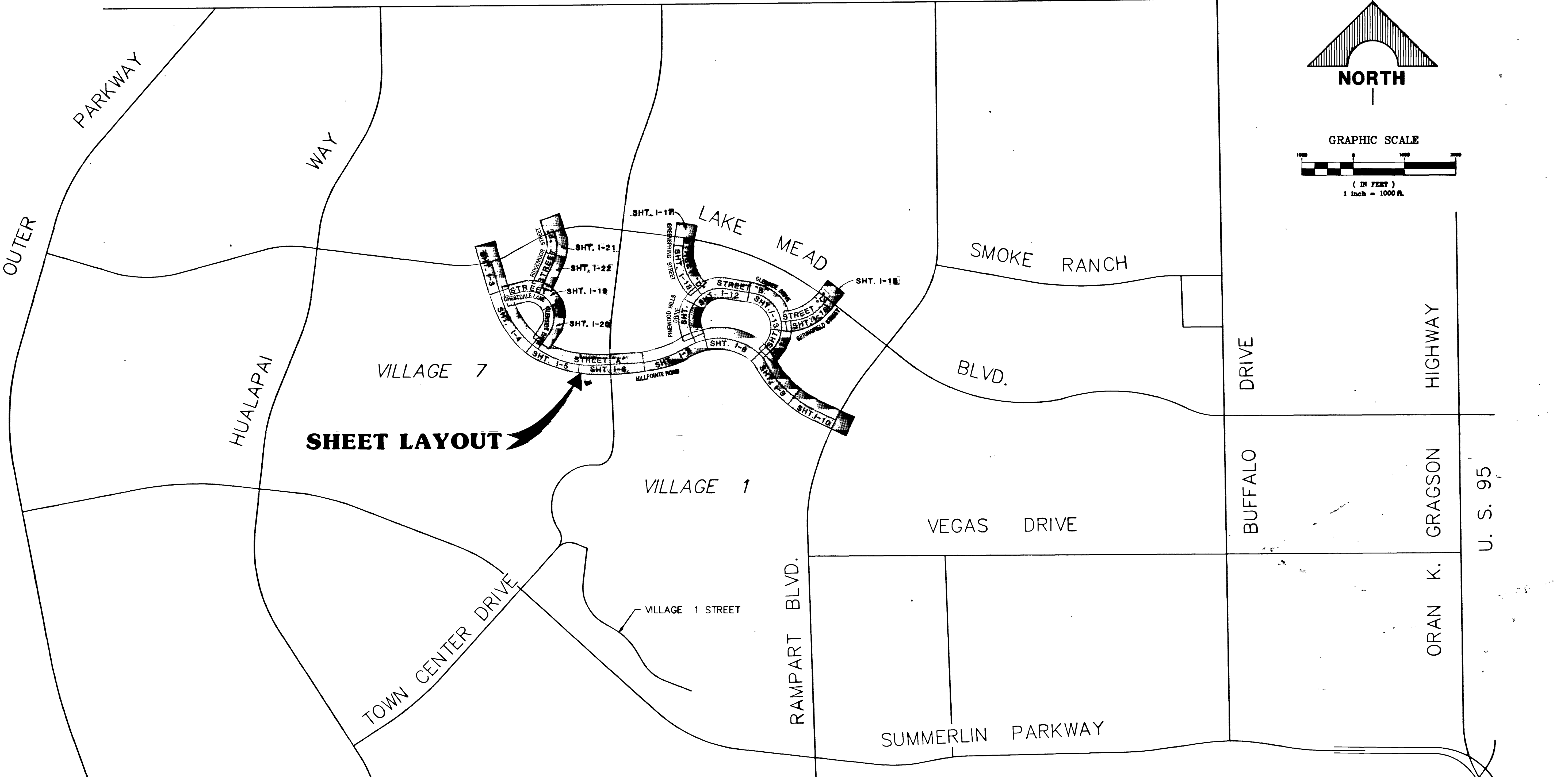


JOB NO. 620.314



RECORD DRAWINGS

THESE PLANS SHOW RECORD INFORMATION RECEIVED FROM:

CONTRACTOR: **SOUTHERN NEVADA PAVING/T&B**

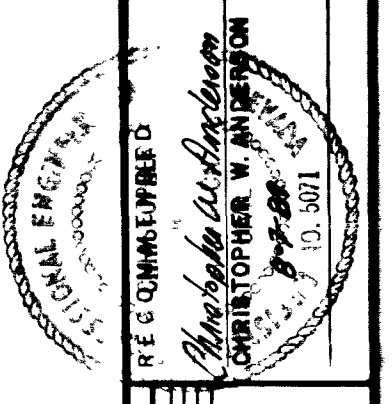
DATE: **6-18-90**

THIS DATA MAY OR MAY NOT REFLECT THE ACTUAL FIELD LOCATIONS. ALL DATA SHOULD BE CONFIRMED PRIOR TO USE ON DEVELOPMENT OR ENGINEERING PLANS.

INDEX OF DRAWINGS

SHEET NO.	TITLE
I-0	KEY MAP, VICINITY MAP & LIST OF DRAWINGS
I-1	MASTER IMPROVEMENT/STORM DRAIN PLAN - VILLAGE 1 NORTH AREA
I-2	MASTER IMPROVEMENT/STORM DRAIN PLAN - VILLAGE 7 NORTH AREA
I-3	PLAN & PROFILE - STREET-"A" STA. 400+00 TO 407+00 HILLPOINTE ROAD
I-4	PLAN & PROFILE - STREET-"A" STA. 407+00 TO 419+00 HILLPOINTE ROAD
I-5	PLAN & PROFILE - STREET-"A" STA. 419+00 TO 431+00 HILLPOINTE ROAD
I-6	PLAN & PROFILE - STREET-"A" STA. 431+00 TO 443+00 HILLPOINTE ROAD
I-7	PLAN & PROFILE - STREET-"A" STA. 443+00 TO 455+00 HILLPOINTE ROAD
I-8	PLAN & PROFILE - STREET-"A" STA. 455+00 TO 467+00 HILLPOINTE ROAD
I-9	PLAN & PROFILE - STREET-"A" STA. 467+00 TO 479+00 HILLPOINTE ROAD
I-10	PLAN & PROFILE - STREET-"A" STA. 479+00 TO 486+72.47 HILLPOINTE ROAD
I-11	PLAN & PROFILE - STREET-"B" STA. 100+00 TO 107+00 PINWOOD HILLS DRIVE
I-12	PLAN & PROFILE - STREET-"B" STA. 107+00 TO 119+00 PINWOOD HILLS DRIVE
I-13	PLAN & PROFILE - STREET-"B" STA. 119+00 TO 131+00 GLENSIDE DRIVE
I-14	PLAN & PROFILE - STREET-"B" STA. 131+00 TO 135+51.91 GLENSIDE DRIVE
I-15	PLAN & PROFILE - STREET-"C" STA. 50+00 TO 54+00 SPRINGFIELD STREET
I-16	PLAN & PROFILE - STREET-"C" STA. 54+00 TO 62+45.37 SPRINGFIELD STREET
I-17	PLAN & PROFILE - STREET-"D" STA. 30+00 TO 34+00 GREENSPRING STREET
I-18	PLAN & PROFILE - STREET-"D" STA. 34+00 TO 44+58.06 GREENSPRING STREET
I-19	PLAN & PROFILE - STREET-"E" STA. 200+00 TO 210+00 CRESTDALE LANE
I-20	PLAN & PROFILE - STREET-"E" STA. 210+00 TO 220+40.00 SPRING GATE LANE
I-21	PLAN & PROFILE - STREET-"F" STA. 10+00 TO 20+00 RIDGEMOOR STREET
I-22	PLAN & PROFILE - STREET-"F" STA. 20+00 TO 25+30.20 RIDGEMOOR STREET
I-23	STREET SECTIONS
I-24	DRAINAGE DETAILS/PROFILES
I-25	DRAINAGE DETAILS/PROFILES
I-26	BOX CULVERT DETAILS/PROFILES

REV	DATE	DESCRIPTION
A	07/89	ISSUE TO BID
B	08/89	ISSUE TO CONSTRUCT
C	07-89	DATE
D		RECORD DRAWING



G.C. WALLACE, INC.
Engineering/Architecture

1535 SOUTH RAINBOW BLVD., LAS VEGAS, NEVADA 89102

HOWARD HUGHES PROPERTIES
VILLAGE 1 NORTH
KEY MAP, VICINITY MAP
AND LIST OF DRAWINGS

SHEET
I-0
30F 29 SHEETS

1889

15-548 107-11695

CHEYENNE AVENUE

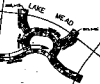


OUTER
PASSWAY
WAY
MULAPAI

SHEET LAYOUT

VILLAGE 7

VILLAGE 1



SMOKE RANCH

BLVD.

DRIVE

ORAN K. GRADSON
HIGHWAY

U. S. 93

VECAS DRIVE

BUFFALO

TOWN CENTER DRIVE

RAMPART BLVD.

SUMMERLIN PARKWAY

WESTLEY DR.

DRIVE



NOTES
1. THIS SHEET IS A PART OF THE PROJECT FOR THE DEVELOPMENT OF THE VILLAGE 7 AND VILLAGE 1 PHASES OF THE CHARLESTON BLVD. PROJECT.
2. THE DEVELOPER HAS BEEN ADVISED THAT THE CITY OF DENVER HAS REVIEWED THIS SHEET AND HAS APPROVED THE PROJECT FOR THE CITY OF DENVER.
3. THE DEVELOPER HAS BEEN ADVISED THAT THE CITY OF DENVER HAS REVIEWED THIS SHEET AND HAS APPROVED THE PROJECT FOR THE CITY OF DENVER.

CHARLESTON BLVD.

GENERAL NOTES

1. THIS SHEET IS A PART OF THE PROJECT FOR THE DEVELOPMENT OF THE VILLAGE 7 AND VILLAGE 1 PHASES OF THE CHARLESTON BLVD. PROJECT.
2. THE DEVELOPER HAS BEEN ADVISED THAT THE CITY OF DENVER HAS REVIEWED THIS SHEET AND HAS APPROVED THE PROJECT FOR THE CITY OF DENVER.
3. THE DEVELOPER HAS BEEN ADVISED THAT THE CITY OF DENVER HAS REVIEWED THIS SHEET AND HAS APPROVED THE PROJECT FOR THE CITY OF DENVER.

WILLIAMS & ASSOCIATES, INC.
WILLIAMS & ASSOCIATES, INC.
1515 W. 14TH AVENUE, SUITE 100
DENVER, COLORADO 80202
PHONE: 303-733-1111
FAX: 303-733-1112
WWW.WA-INC.COM

11 20 00000000