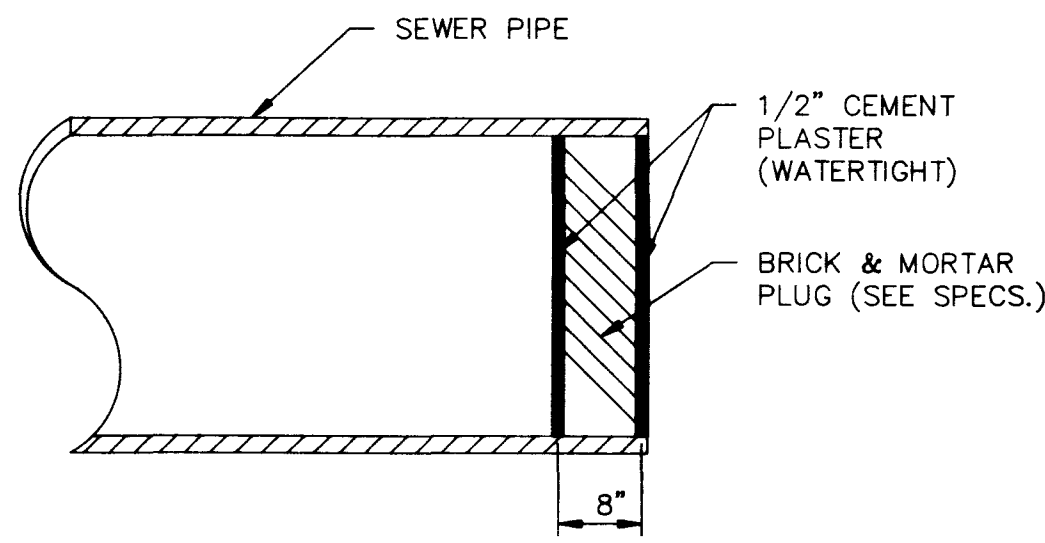


JOB NO. 620.314

8/4 DIETRICH-POST 6528

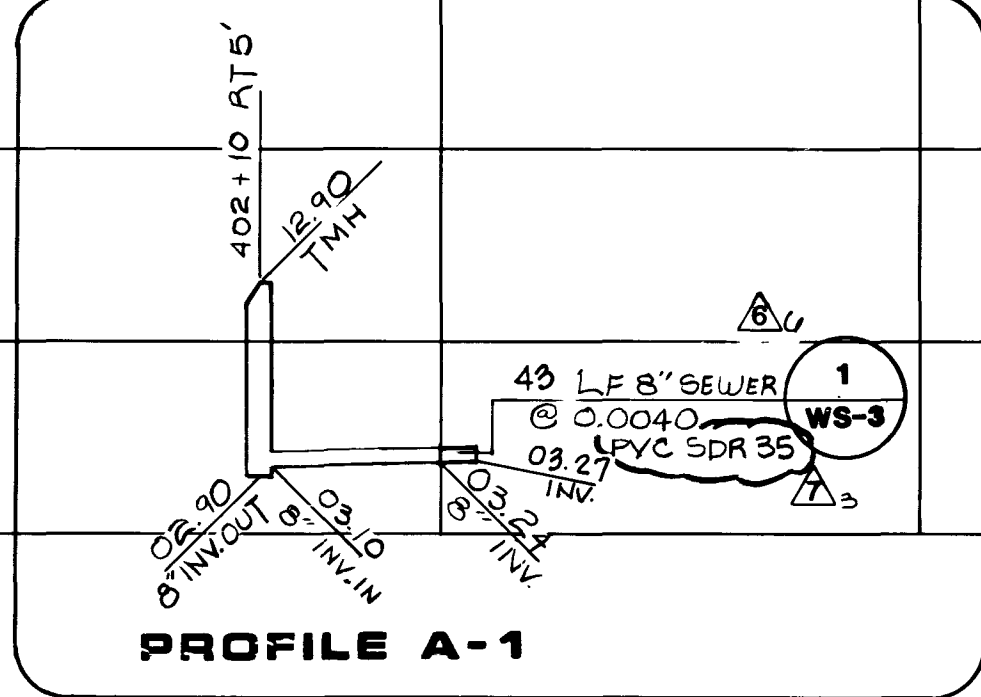
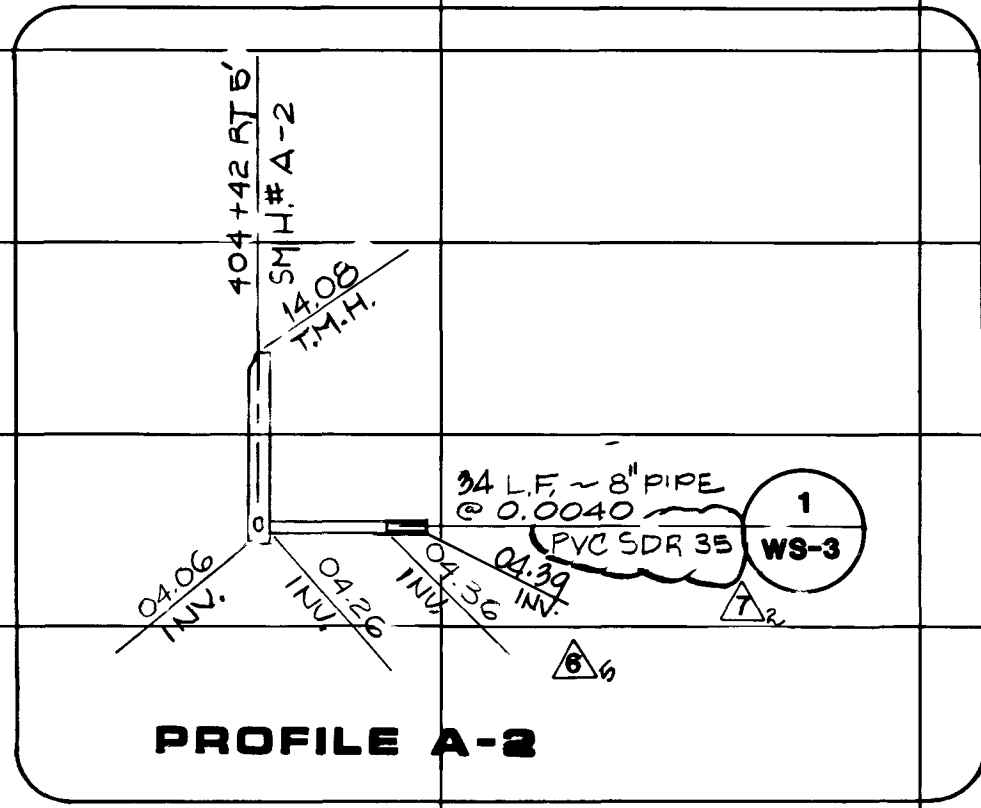
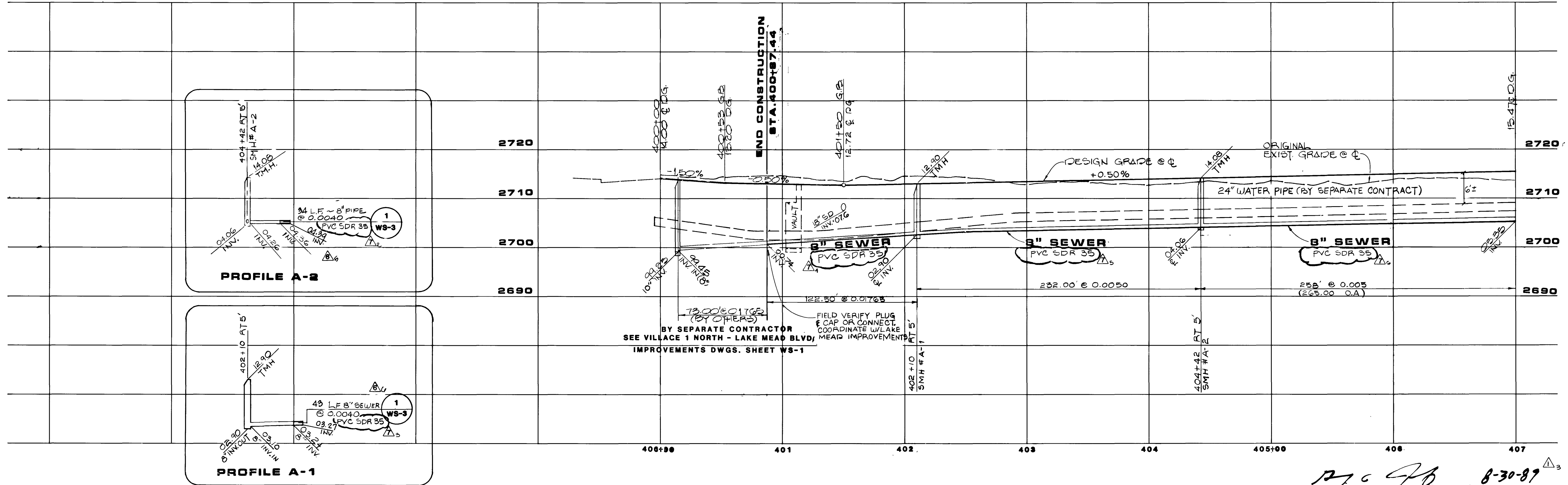


NOTE
ALL PIPES 18" & SMALLER SHALL BE PLUGGED WITH A PVC PIPE PLUG. 21" AND LARGER PIPES SHALL BE PLUGGED WITH A BRICK & MORTAR PLUG AS SHOWN.

RECORD DRAWINGS
THESE PLANS SHOW RECORD INFORMATION RECEIVED FROM:

CONTRACTOR WESTERN STATES DATE 5/16/90

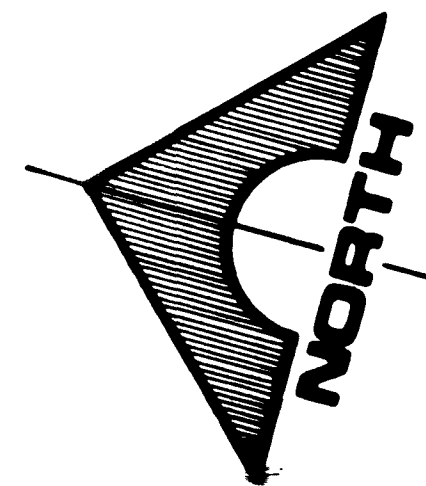
THIS DATA MAY OR MAY NOT REFLECT THE ACTUAL FIELD LOCATIONS. ALL DATA SHOULD BE CONFIRMED PRIOR TO USE ON DEVELOPMENT OR ENGINEERING PLANS.



BY SEPARATE CONTRACTOR
SEE VILLAGE 1 NORTH - LAKE MEAD BLVD. IMPROVEMENTS DWGS. SHEET WS-1

DESIGN GRADE @ ϕ
+0.50%
ORIGINAL EXIST. GRADE @ ϕ

DATE 8-30-89
LAS VEGAS VALLEY WATER DISTRICT



POD "A"

END CONSTRUCTION STA. 400+87.44

MATCH LINE STA. 407+00
SEE SHEET WS-4

HILLPOINTE ROAD

SCALE: HORIZ. 1"=40'
VERT. 1"=10'

NOTE: THESE PLANS ARE FOR THE PURPOSE OF ROADWAY IMPROVEMENTS AND UTILITIES (PAVEMENT WITH BASE CURB AND GUTTER, STORM DRAIN, WATER, SEWER, ETC.). ALL ROADWAY AND LANDSCAPE AREAS HAVE BEEN PREVIOUSLY ROUGH GRADED. ANY LIMITS OF ROUGH GRADING SHOWN ARE FOR REFERENCE ONLY. FOR SCOPE AND LIMITS OF ROUGH GRADING, SEE "VILLAGE 1 NORTH - ROUGH GRADING" PACKAGE. FOR FINISH GRADING OF LANDSCAPE AREAS AND SIDEWALK LOCATIONS, SEE LANDSCAPE PACKAGE BY DESIGN WORKSHOP, INC.

REV	DATE	DESCRIPTION
1	5/16/90	AS-BUILT
2	8/17/90	REVISION 087/1/90
3	8/22/88	ISSUE TO BID WATER/SEWER
4	7/20/88	ADDENDUM #2
5	7/20/88	ISSUE FOR CONSTRUCTION / CHANGE ORDER #2
6	8/22/88	REVISIONS 1.V.V.W.D.

G.C. WALLACE, INC.
Engineering/Architecture

HOWARD HUGHES PROPERTIES
VILLAGE 1 NORTH
WATER AND SEWER PLAN & PROFILE
HILLPOINTE ROAD
STA. 400+00 TO 407+00

SHEET 6
WS-3
60' 24 SHEETS

307-1651

35-1-140 307-V601

