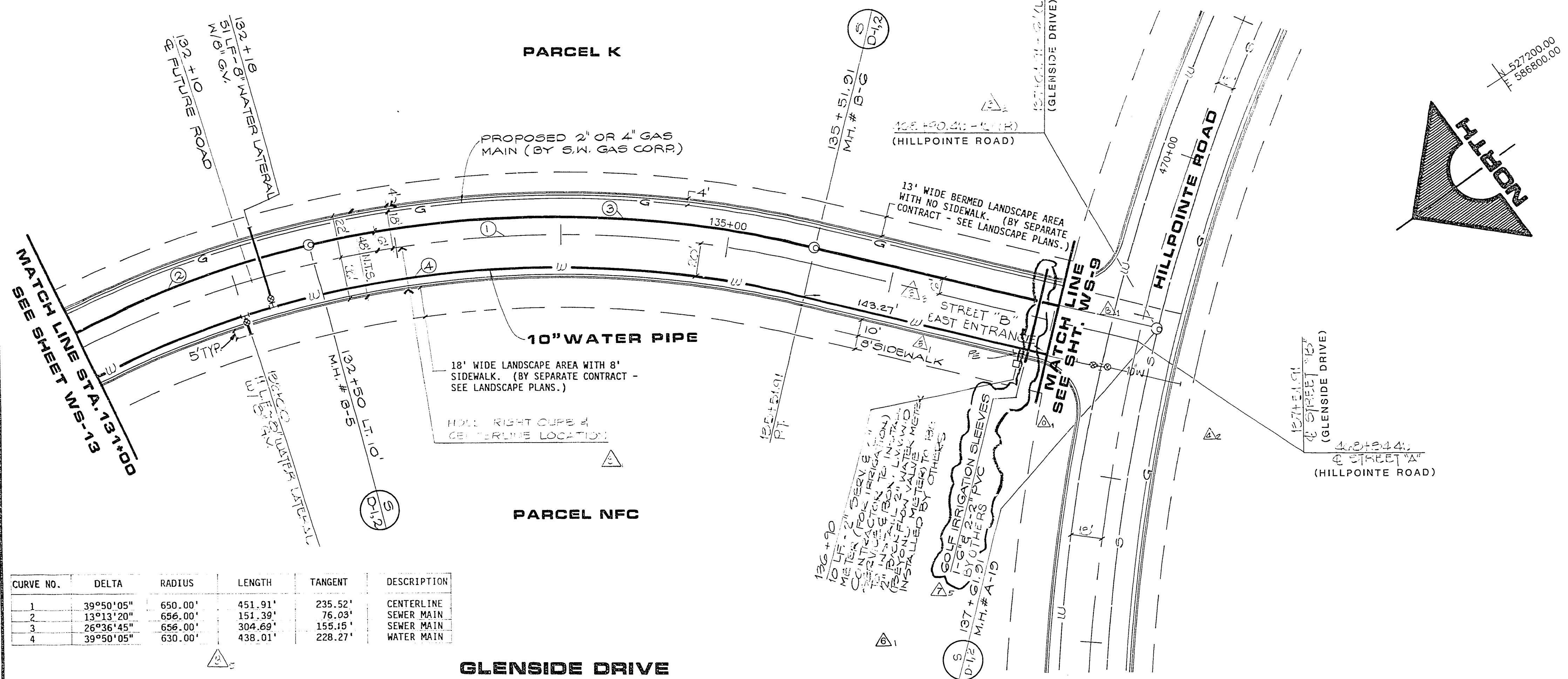
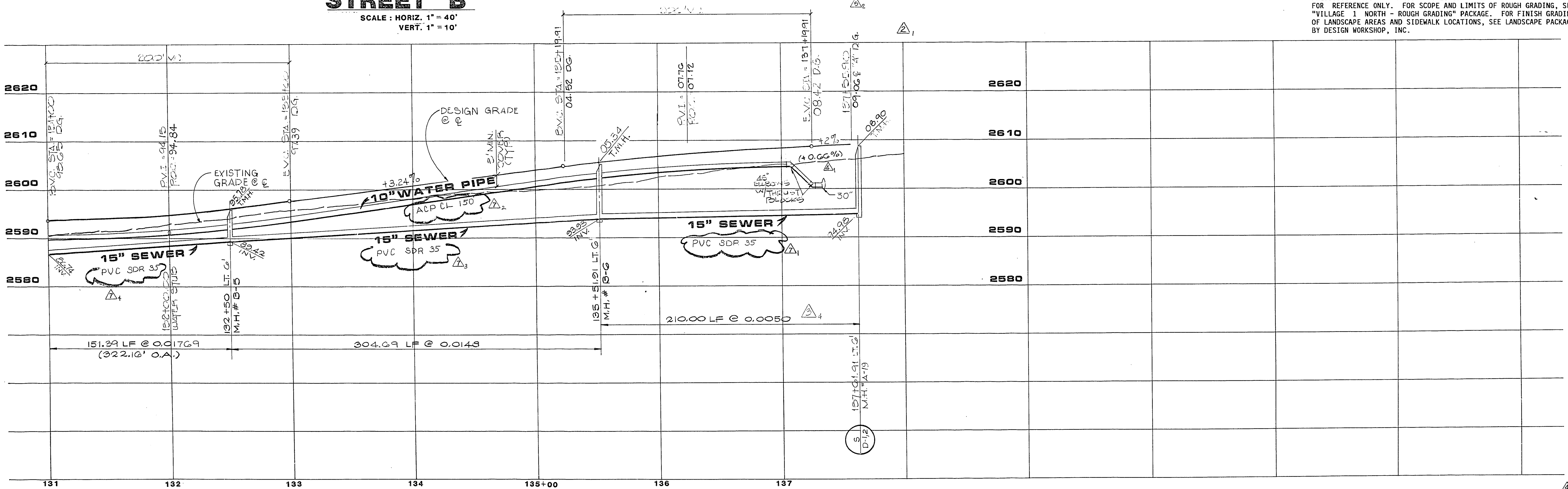


JOB NO. 620.314

CURVE NO.	DELTA	RADIUS	LENGTH	TANGENT	DESCRIPTION
1	39°50'05"	650.00'	451.91'	235.52'	CENTERLINE SEWER MAIN
2	13°13'20"	656.00'	151.39'	76.09'	SEWER MAIN
3	26°36'45"	656.00'	304.69'	155.15'	SEWER MAIN
4	39°50'05"	630.00'	438.01'	228.27'	WATER MAIN

GLENSIDE DRIVE STREET "B"
 SCALE: HORIZ. 1" = 40'
 VERT. 1" = 10'



RECORD DRAWINGS
 THESE PLANS SHOW RECORD INFORMATION RECEIVED FROM:

CONTRACTOR WESTERN STATES DATE 5/16/90

THIS DATA MAY OR MAY NOT REFLECT THE ACTUAL FIELD LOCATIONS. ALL DATA SHOULD BE CONFIRMED PRIOR TO USE ON DEVELOPMENT OR ENGINEERING PLANS.

NOTE: THESE PLANS ARE FOR THE PURPOSE OF ROADWAY IMPROVEMENTS AND UTILITIES (PAVEMENT WITH BASE CURB AND GUTTER, STORM DRAIN, WATER, SEWER, ETC.). ALL ROADWAY AND LANDSCAPE AREAS HAVE BEEN PREVIOUSLY ROUGH GRADED. ANY LIMITS OF ROUGH GRADING SHOWN ARE FOR REFERENCE ONLY. FOR SCOPE AND LIMITS OF ROUGH GRADING, SEE "VILLAGE 1 NORTH - ROUGH GRADING" PACKAGE. FOR FINISH GRADING OF LANDSCAPE AREAS AND SIDEWALK LOCATIONS, SEE LANDSCAPE PACKAGE BY DESIGN WORKSHOP, INC.

REV	DATE	DESCRIPTION
A	10/22/89	ISSUE TO BID WATER/SEWER
B	1/23/90	ADDENDUM #2
C	1/23/90	ISSUE FOR CONSTRUCTION
D	1/23/90	CHANGE ORDER #0
E	5/16/90	CHANGE ORDER #2

RECORDED & INDEXED
 5071 632-89
 REC. NO. DATE
 G.C. WALLACE, INC.
 Engineering/Architecture

GLENSIDE DRIVE
 HOWARD HUGHES PROPERTIES
 VILLAGE 1 NORTH
 WATER AND SEWER PLAN & PROFILE
 STA. 131+00 TO 135+51.91

SHEET 17
 WS-14
 17
 OF 24 SHEETS

DATE 8-30-89
 LAS VEGAS VALLEY WATER DISTRICT

307-V651