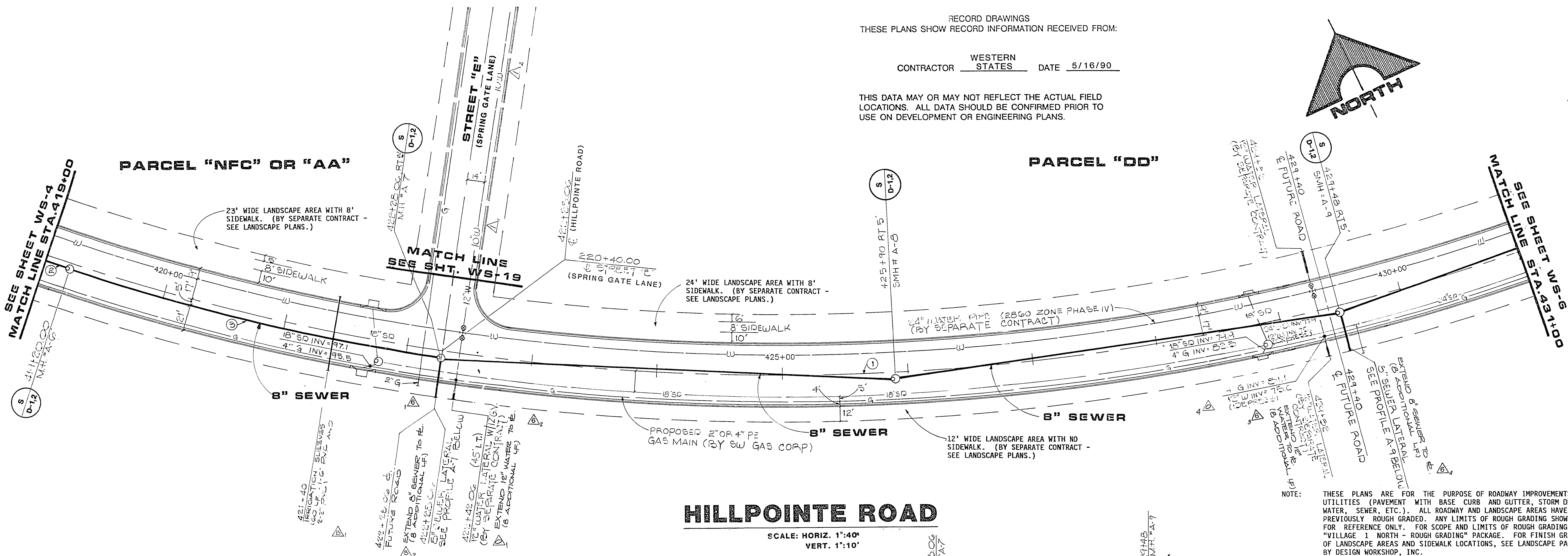
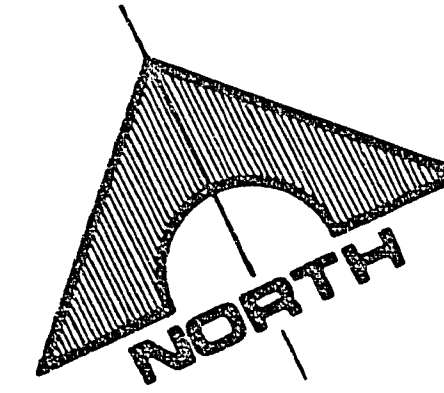


CURVE NO.	DELTA	RADIUS	LENGTH	TANGENT	DESCRIPTION
1	38°11'50"	1800.00'	1200.00'	623.26'	CENTERLINE
2	00°38'12"	1805.00'	20.06'	10.03'	SEWER MAIN
3	09°59'42"	1805.00'	314.87'	157.84'	SEWER MAIN

RECORD DRAWINGS  
THESE PLANS SHOW RECORD INFORMATION RECEIVED FROM:

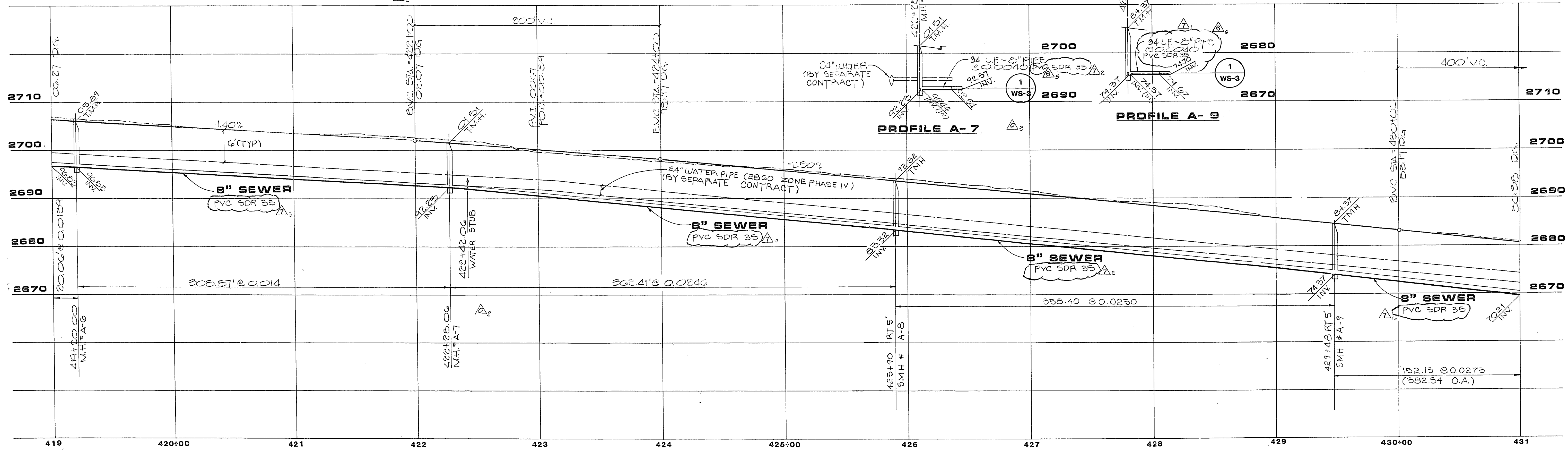
CONTRACTOR WESTERN STATES DATE 5/16/90

THIS DATA MAY OR MAY NOT REFLECT THE ACTUAL FIELD LOCATIONS. ALL DATA SHOULD BE CONFIRMED PRIOR TO USE ON DEVELOPMENT OR ENGINEERING PLANS.



### HILLPOINTE ROAD

SCALE: HORIZ. 1"=40'  
VERT. 1"=10'



NOTE: THESE PLANS ARE FOR THE PURPOSE OF ROADWAY IMPROVEMENTS AND UTILITIES (PAVEMENT WITH BASE CURB AND GUTTER, STORM DRAIN, WATER, SEWER, ETC.). ALL ROADWAY AND LANDSCAPE AREAS HAVE BEEN PREVIOUSLY ROUGH GRADED. ANY LIMITS OF ROUGH GRADING SHOWN ARE FOR REFERENCE ONLY. FOR SCOPE AND LIMITS OF ROUGH GRADING, SEE "VILLAGE 1 NORTH - ROUGH GRADING" PACKAGE. FOR FINISH GRADING OF LANDSCAPE AREAS AND SIDEWALK LOCATIONS, SEE LANDSCAPE PACKAGE BY DESIGN WORKSHOP, INC.

REV	DATE	DESCRIPTION
A	6/22/89	ISSUE TO BID WATER/SEWER
B	7/20/89	ADDENDUM #2
C	7/20/89	ISSUE FOR CONSTRUCTION
D	7/20/89	CHANGE ORDER #0
E	7/20/89	CHANGE ORDER #1

REVISIONS LVVVWD  
G.C. WALLACE, INC.  
Engineering/Architecture  
1575 SOUTH RAINBOW BLVD., LAS VEGAS, NEVADA 89102

HOWARD HUGHES PROPERTIES  
VILLAGE 1 NORTH  
WATER AND SEWER PLAN & PROFILE  
HILLPOINTE ROAD  
STA. 419+00 TO 431+00

SHEET 8  
WS-5  
8 OF 24 SHEETS

DATE 8-30-89  
LAS VEGAS VALLEY WATER DISTRICT

JOB NO. 620.914

307-1051

05-1-147 307-V681