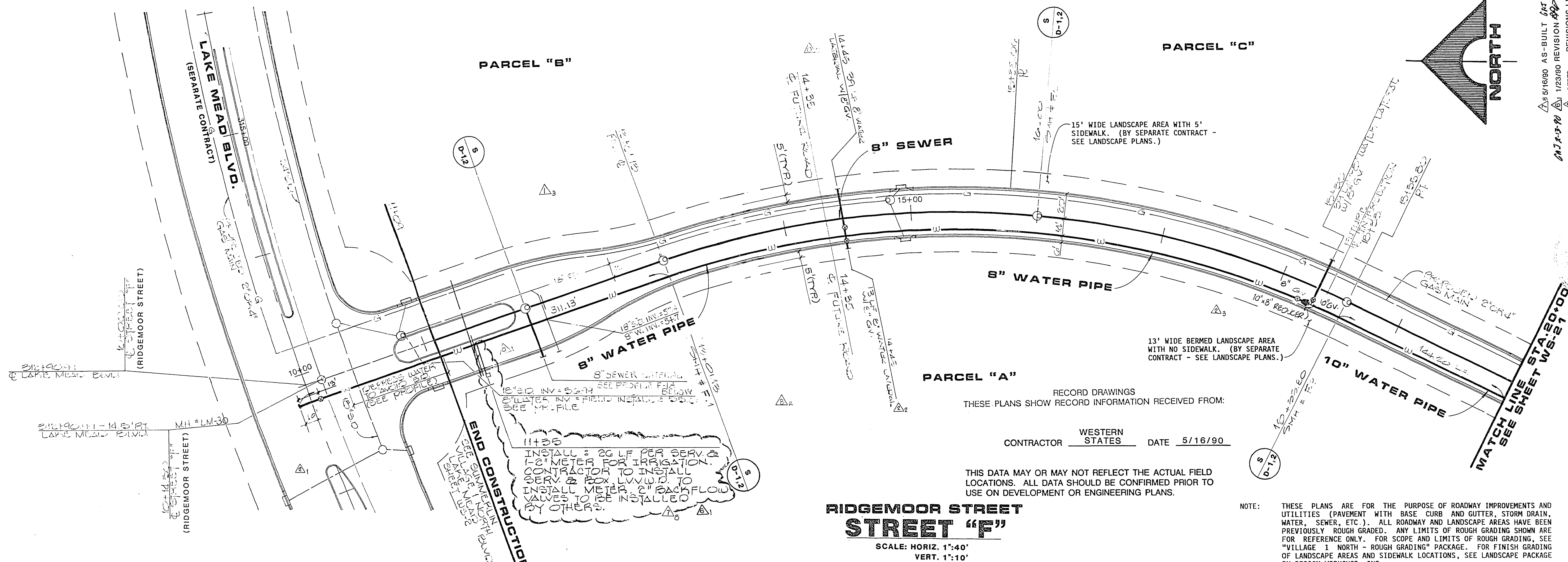


CURVE NO.	DELTA	RADIUS	LENGTH	TANGENT	DESCRIPTION
1	45°24'00"	700.00'	554.67'	292.82'	CENTERLINE
2	24°27'46"	700.00'	298.87'	151.75'	SEWER MAIN
3	20°56'15"	700.00'	255.80'	129.34'	SEWER MAIN
4	45°24'00"	686.00'	543.58'	286.96'	WATER MAIN

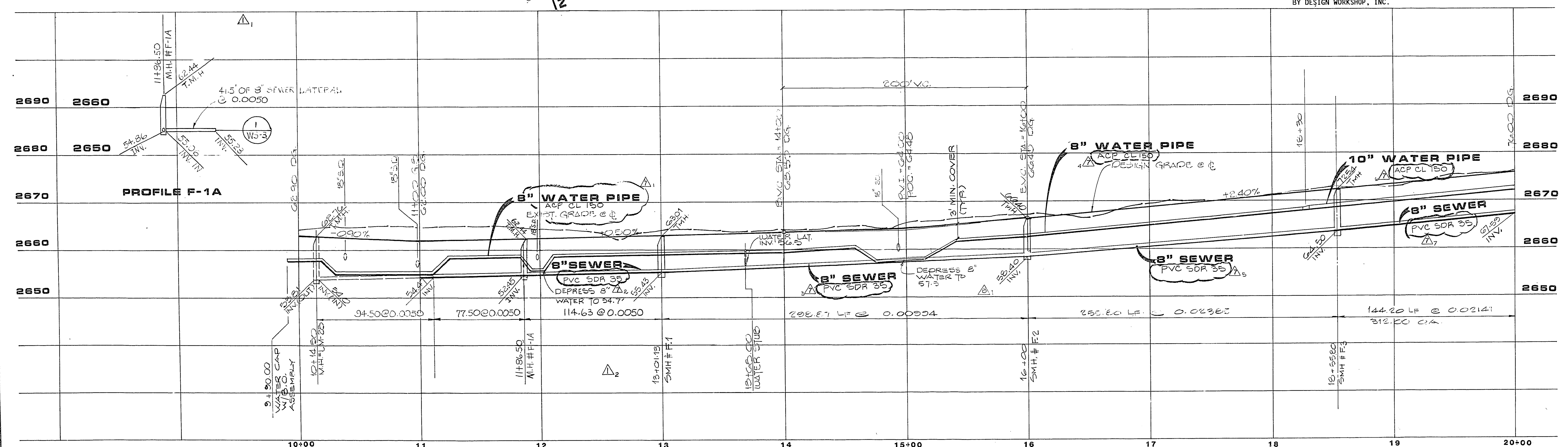


**RIDGEMOOR STREET
STREET "F"**
SCALE: HORIZ. 1"=40'
VERT. 1"=10'

RECORD DRAWINGS
THESE PLANS SHOW RECORD INFORMATION RECEIVED FROM:
CONTRACTOR WESTERN STATES DATE 5/16/90

THIS DATA MAY OR MAY NOT REFLECT THE ACTUAL FIELD LOCATIONS. ALL DATA SHOULD BE CONFIRMED PRIOR TO USE ON DEVELOPMENT OR ENGINEERING PLANS.

NOTE: THESE PLANS ARE FOR THE PURPOSE OF ROADWAY IMPROVEMENTS AND UTILITIES (PAVEMENT WITH BASE CURB AND GUTTER, STORM DRAIN, WATER, SEWER, ETC.). ALL ROADWAY AND LANDSCAPE AREAS HAVE BEEN PREVIOUSLY ROUGH GRADED. ANY LIMITS OF ROUGH GRADING SHOWN ARE FOR REFERENCE ONLY. FOR SCOPE AND LIMITS OF ROUGH GRADING, SEE "VILLAGE 1 NORTH - ROUGH GRADING" PACKAGE. FOR FINISH GRADING OF LANDSCAPE AREAS AND SIDEWALK LOCATIONS, SEE LANDSCAPE PACKAGE BY DESIGN WORKSHOP, INC.



AS-BUILT 6/27/90
REVISION 12/23/90
REVISION 02/14/91
REVISION 05/16/90

REV	DATE	DESCRIPTION
A	6/22/89	ISSUE TO BID WATER/SEWER
B	7/3/89	ADDENDUM #2
C	7/20/89	ISSUE FOR CONSTRUCTION 1
D	7/20/89	ISSUE FOR CONSTRUCTION 2
E	7/31/89	CHANGE ORDER #0
F	7/31/89	CHANGE ORDER #1

RECOMMENDED BY: **G.C. WALLACE, INC.**
Engineering/Architecture

HOWARD HUGHES PROPERTIES
VILLAGE 1 NORTH
WATER AND SEWER PLAN & PROFILE
STREET "F"
STA. 10+00 TO 20+00

SHEET 23
WS-20
23 OF 24 SHEETS

DATE: 8-30-89
LAS VEGAS VALLEY WATER DISTRICT

JOB NO. 620.314

307-V657

05-1-157 307-V651