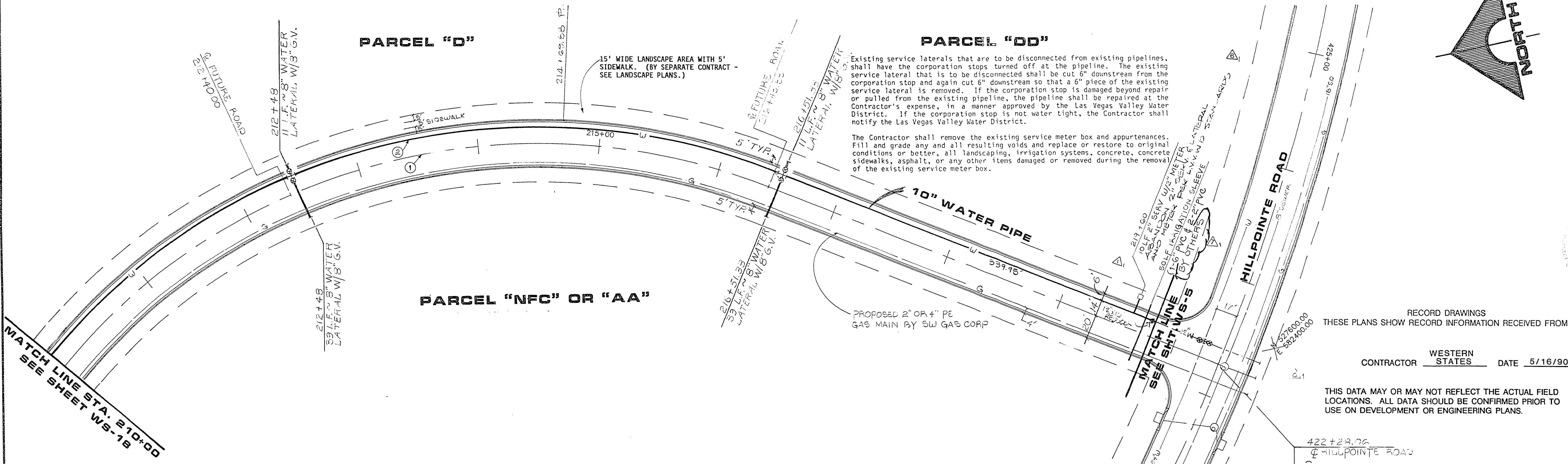


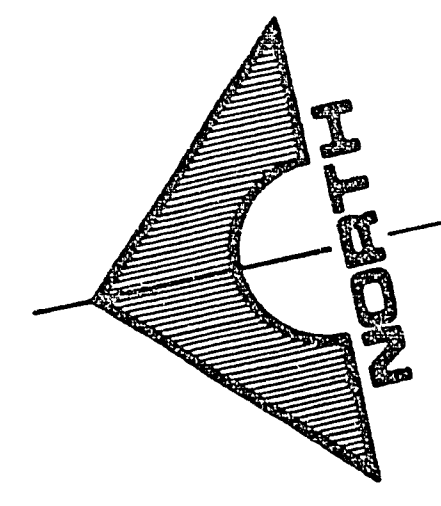
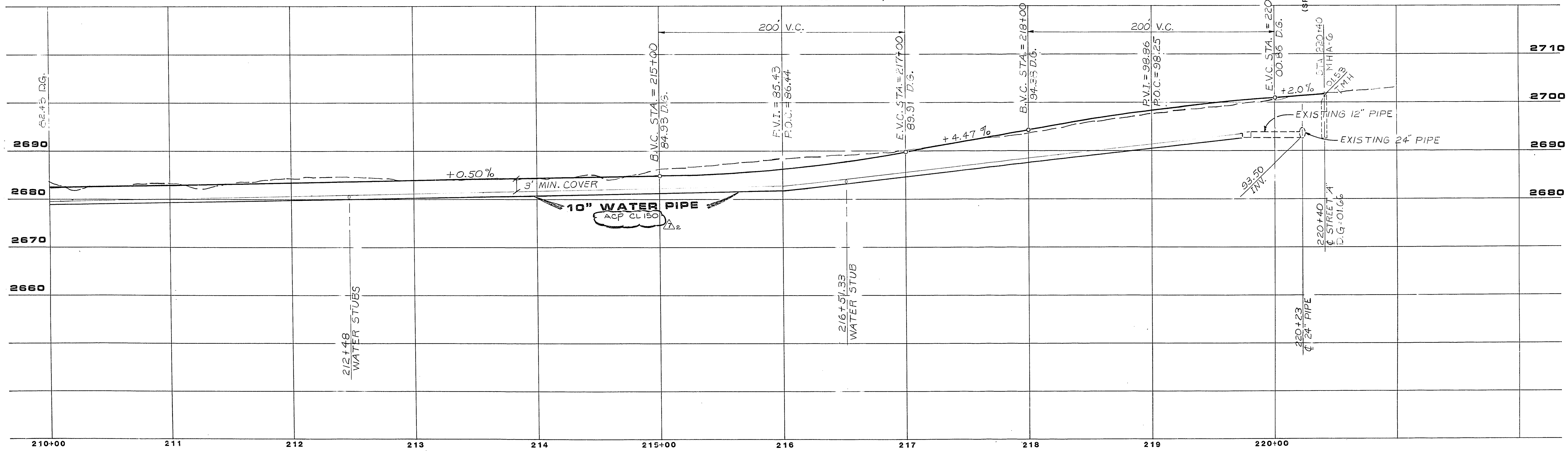
CURVE NO.	DELTA	RADIUS	LENGTH	TANGENT	DESCRIPTION
1	72°16'28"	510.00'	643.33'	372.41'	CENTERLINE
2	72°16'28"	524.00'	660.99'	382.63'	WATER MAIN



**SPRING GATE LANE
STREET "E"**

SCALE: HORIZ. 1"=40'
VERT. 1"=10'

NOTE: THESE PLANS ARE FOR THE PURPOSE OF ROADWAY IMPROVEMENTS AND UTILITIES (PAVEMENT WITH BASE CURBS AND GUTTER, STORM DRAIN, WATER, SEWER, ETC.). ALL ROADWAY AND LANDSCAPE AREAS HAVE BEEN PREVIOUSLY ROUGH GRADED. ANY LIMITS OF ROUGH GRADING SHOWN ARE FOR REFERENCE ONLY. FOR SCOPE AND LIMITS OF ROUGH GRADING, SEE "VILLAGE 1 NORTH - ROUGH GRADING" PACKAGE. FOR FINISH GRADING OF LANDSCAPE AREAS AND SIDEWALK LOCATIONS, SEE LANDSCAPE PACKAGE BY DESIGN WORKSHOP, INC.



RECORD DRAWINGS
THESE PLANS SHOW RECORD INFORMATION RECEIVED FROM:
CONTRACTOR WESTERN STATES DATE 5/16/90
THIS DATA MAY OR MAY NOT REFLECT THE ACTUAL FIELD LOCATIONS. ALL DATA SHOULD BE CONFIRMED PRIOR TO USE ON DEVELOPMENT OR ENGINEERING PLANS.

REV	DATE	DESCRIPTION
A	5/22/90	ISSUE TO BID WATER/SEWER
B	7/22/90	ISSUE FOR CONSTRUCTION / CHANGE ORDER #0
C	10/25/90	REVISIONS LVWD
D	11/23/90	REVISION 897/89/89

RECOMMENDED:
DESIGNED BY: [Signature]
CHECKED BY: [Signature]
DATE: 5/16/90
G.C. WALLACE, INC.
Engineering/Architecture
1555 SOUTH RAINBOW BLVD., LAS VEGAS, NEVADA 89102

SPRING GATE LANE
HOWARD HUGHES PROPERTIES
VILLAGE 1 NORTH
WATER AND SEWER PLAN & PROFILE
STATION 210+00 TO 220+40
SHEET 22
OF 24 SHEETS

DATE: 8-30-89
LAS VEGAS VALLEY WATER DISTRICT

JOB NO. 620.314

6184 DIETRICH-POST 65326

307-1651 307-1651