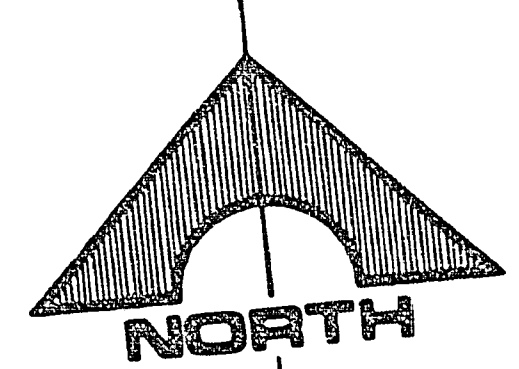
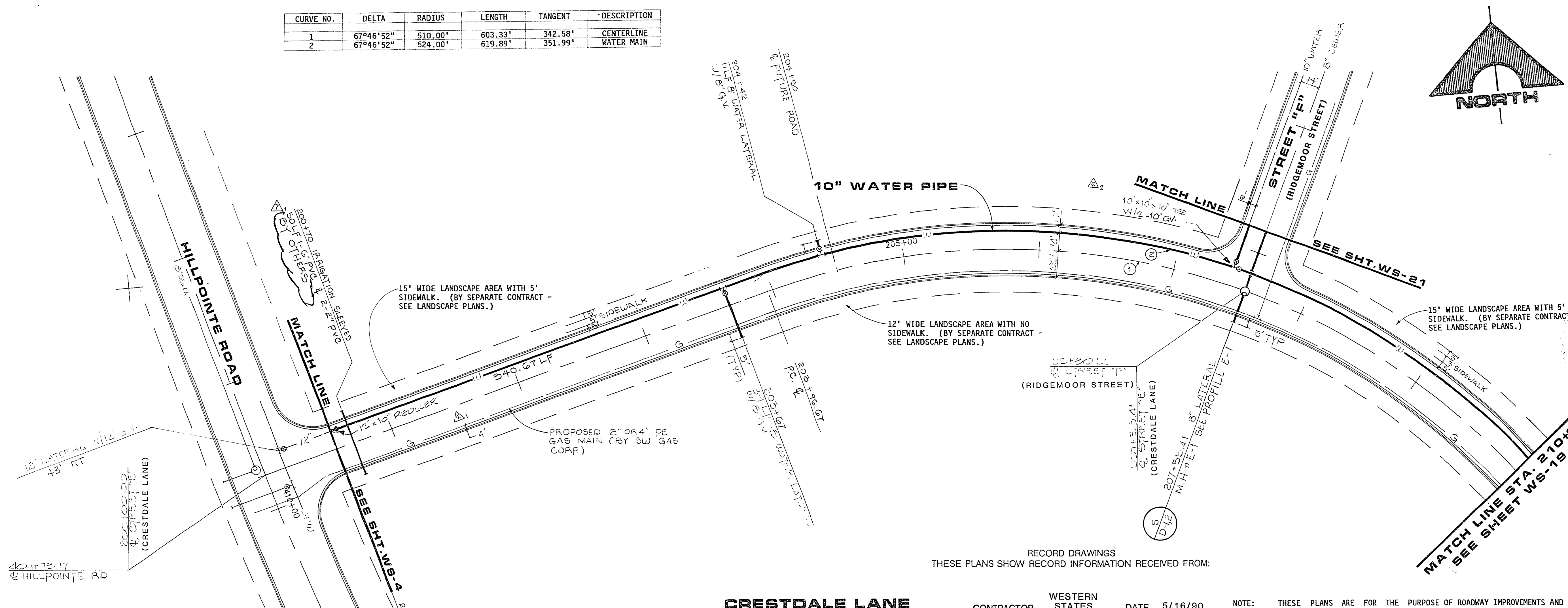


CURVE NO.	DELTA	RADIUS	LENGTH	TANGENT	DESCRIPTION
1	67°46'52"	510.00'	603.33'	342.58'	CENTERLINE
2	67°46'52"	524.00'	619.89'	351.99'	WATER MAIN



REV	DATE	DESCRIPTION
A	8/22/89	ISSUE TO BID WATER/SEWER
B	8/22/89	CHANGE ORDER #1
C	8/22/89	REVISIONS LVVWD
D	8/22/89	AS-BUILT

RECOMMENDED
 CHRISTOPHER WALLACE
 CIVIL ENGINEER
 LICENSE NO. 62289
 STATE OF NEVADA

RECORD DRAWINGS
 THESE PLANS SHOW RECORD INFORMATION RECEIVED FROM:

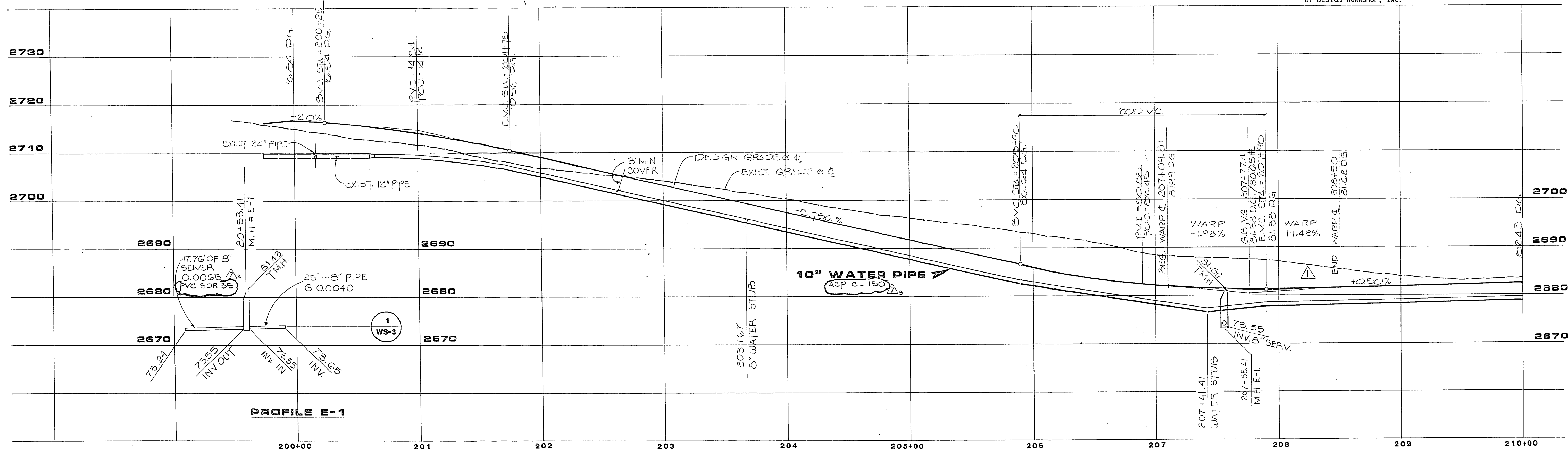
CONTRACTOR WESTERN STATES DATE 5/16/80

**CRESTDALE LANE
 STREET "E"**

SCALE: HORIZ. 1"=40'
 VERT. 1"=10'

THIS DATA MAY OR MAY NOT REFLECT THE ACTUAL FIELD LOCATIONS. ALL DATA SHOULD BE CONFIRMED PRIOR TO USE ON DEVELOPMENT OR ENGINEERING PLANS.

NOTE: THESE PLANS ARE FOR THE PURPOSE OF ROADWAY IMPROVEMENTS AND UTILITIES (PAVEMENT WITH BASE CURB AND GUTTER, STORM DRAIN, WATER, SEWER, ETC.). ALL ROADWAY AND LANDSCAPE AREAS HAVE BEEN PREVIOUSLY ROUGH GRADED. ANY LIMITS OF ROUGH GRADING SHOWN ARE FOR REFERENCE ONLY. FOR SCOPE AND LIMITS OF ROUGH GRADING, SEE "VILLAGE 1 NORTH - ROUGH GRADING" PACKAGE. FOR FINISH GRADING OF LANDSCAPE AREAS AND SIDEWALK LOCATIONS, SEE LANDSCAPE PACKAGE BY DESIGN WORKSHOP, INC.



PROFILE E-1

G.C. WALLACE, INC.
 Engineering/Architecture

CRESTDALE LANE
 HOWARD HUGHES PROPERTIES
 VILLAGE 1 NORTH
 WATER AND SEWER PLAN & PROFILE
 STREET "E"
 STA. 200+00 TO 210+00

SHEET 21
WS-18
 21
 OF 24 SHEETS

DATE 8-30-89
 LAS VEGAS VALLEY WATER DISTRICT

JOB NO. 620.314

307-1651

307-1651