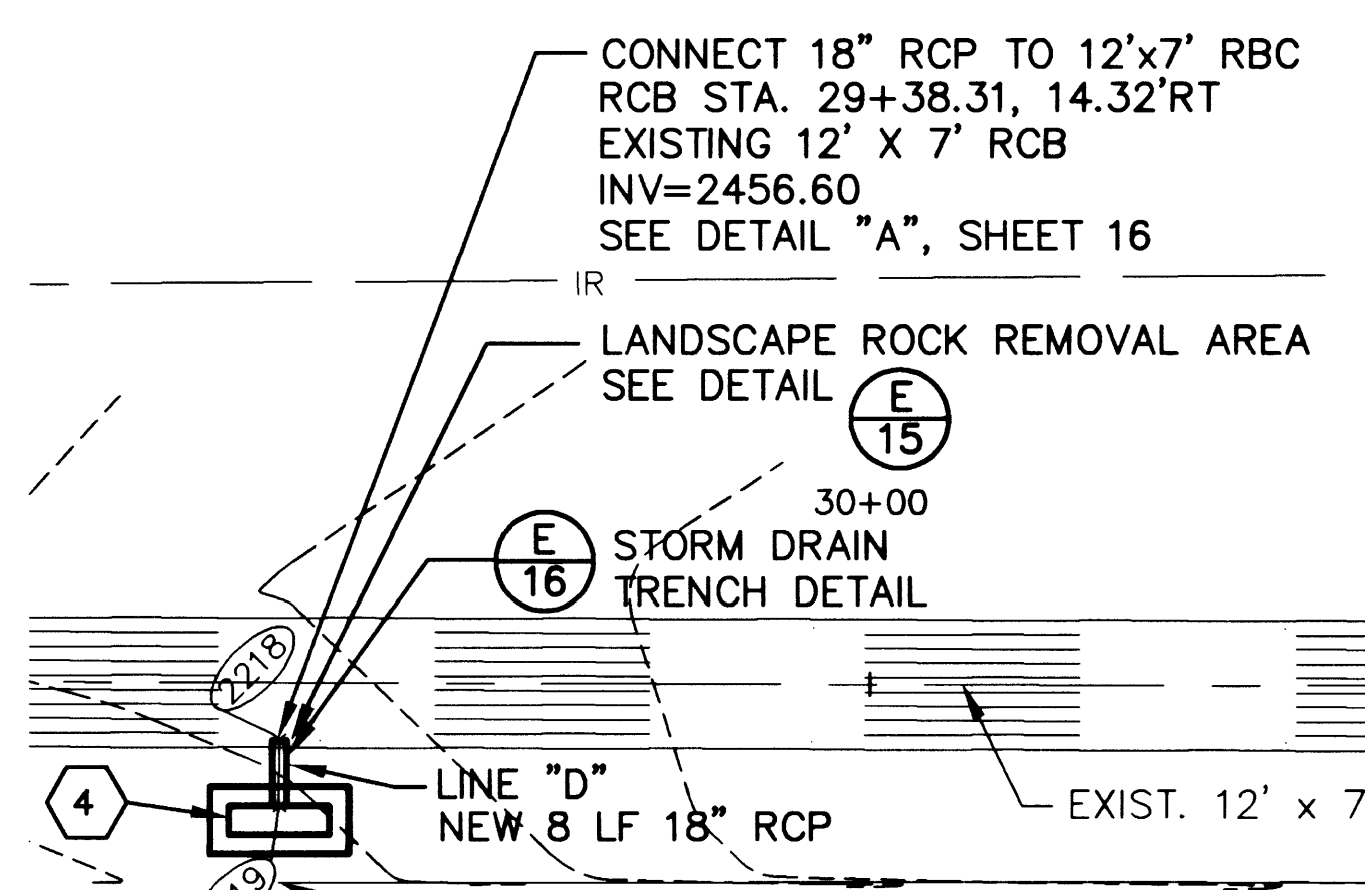
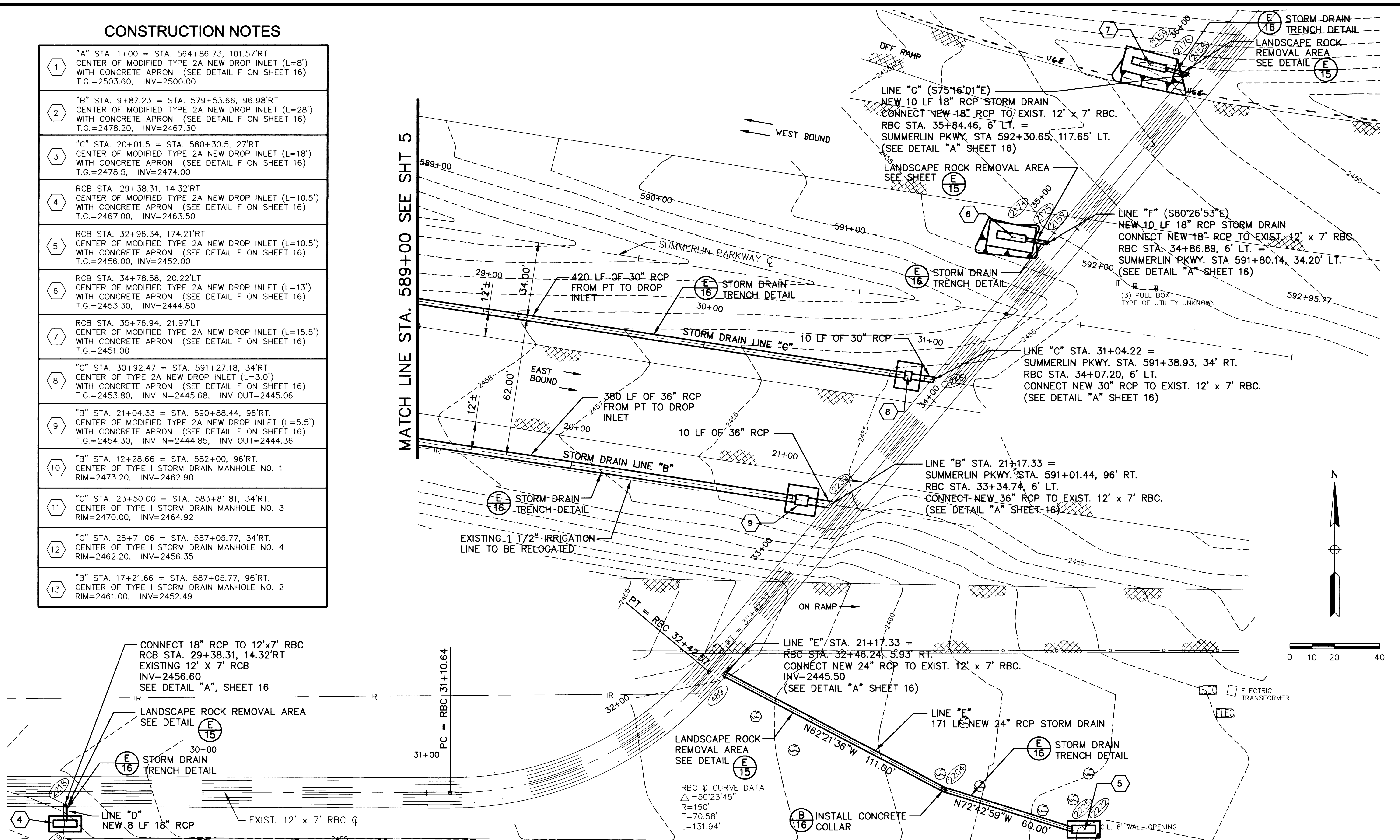


CONSTRUCTION NOTES

1	"A" STA. 1+00 = STA. 564+86.73, 101.57'RT CENTER OF MODIFIED TYPE 2A NEW DROP INLET (L=8') WITH CONCRETE APRON (SEE DETAIL F ON SHEET 16) T.G.=2503.60, INV=2500.00
2	"B" STA. 9+87.23 = STA. 579+53.66, 96.98'RT CENTER OF MODIFIED TYPE 2A NEW DROP INLET (L=28') WITH CONCRETE APRON (SEE DETAIL F ON SHEET 16) T.G.=2478.20, INV=2467.30
3	"C" STA. 20+01.5 = STA. 580+30.5, 27'RT CENTER OF MODIFIED TYPE 2A NEW DROP INLET (L=18') WITH CONCRETE APRON (SEE DETAIL F ON SHEET 16) T.G.=2478.5, INV=2474.00
4	RCB STA. 29+38.31, 14.32'RT CENTER OF MODIFIED TYPE 2A NEW DROP INLET (L=10.5') WITH CONCRETE APRON (SEE DETAIL F ON SHEET 16) T.G.=2467.00, INV=2463.50
5	RCB STA. 32+96.34, 174.21'RT CENTER OF MODIFIED TYPE 2A NEW DROP INLET (L=10.5') WITH CONCRETE APRON (SEE DETAIL F ON SHEET 16) T.G.=2456.00, INV=2452.00
6	RCB STA. 34+78.58, 20.22'LT CENTER OF MODIFIED TYPE 2A NEW DROP INLET (L=13') WITH CONCRETE APRON (SEE DETAIL F ON SHEET 16) T.G.=2453.30, INV=2444.80
7	RCB STA. 35+76.94, 21.97'LT CENTER OF MODIFIED TYPE 2A NEW DROP INLET (L=15.5') WITH CONCRETE APRON (SEE DETAIL F ON SHEET 16) T.G.=2451.00
8	"C" STA. 30+92.47 = STA. 591+27.18, 34'RT CENTER OF TYPE 2A NEW DROP INLET (L=3.0') WITH CONCRETE APRON (SEE DETAIL F ON SHEET 16) T.G.=2453.80, INV IN=2445.68, INV OUT=2445.06
9	"B" STA. 21+04.33 = STA. 590+88.44, 96'RT. CENTER OF MODIFIED TYPE 2A NEW DROP INLET (L=5.5') WITH CONCRETE APRON (SEE DETAIL F ON SHEET 16) T.G.=2454.30, INV IN=2444.85, INV OUT=2444.36
10	"B" STA. 12+28.66 = STA. 582+00, 96'RT. CENTER OF TYPE I STORM DRAIN MANHOLE NO. 1 RIM=2473.20, INV=2462.90
11	"C" STA. 23+50.00 = STA. 583+81.81, 34'RT. CENTER OF TYPE I STORM DRAIN MANHOLE NO. 3 RIM=2470.00, INV=2464.92
12	"C" STA. 26+71.06 = STA. 587+05.77, 34'RT. CENTER OF TYPE I STORM DRAIN MANHOLE NO. 4 RIM=2462.20, INV=2456.35
13	"B" STA. 17+21.66 = STA. 587+05.77, 96'RT. CENTER OF TYPE I STORM DRAIN MANHOLE NO. 2 RIM=2461.00, INV=2452.49

MATCH LINE STA. 589+00 SEE SHT 5



COORDINATE DATA

PT #	NORTHING	EASTING	DESCRIPTION
489	11403.3270	10926.9660	CONNECT 24" RCP TO 12' x 7' RCB
2157	11595.8549	11071.8331	CONNECT 18" RCP TO 12' x 7' RCB
2158	11670.7839	11134.3284	CONNECT 18" RCP TO 12' x 7' RCB
2159	11676.6332	11112.0846	CL NEW DROP INLET
2174	11599.2568	11051.6173	CL NEW DROP INLET
2175	11597.5144	11061.9717	OUTLET 18" RCP LINE F
2176	11673.3271	11124.6572	OUTLET 18" RCP LINE G
2218	11344.8598	10631.9699	CONNECT 18" RCP TO 12' x 7' RCB
2219	11338.0398	10631.9479	OUTLET 18" RCP LINE D
2222	11334.1362	11088.3379	CL NEW DROP INLET
2225	11334.0063	11082.5894	OUTLET 24" RCP LINE
2239	11478.9673	10974.4425	CONNECT 36" RCP TO 12' x 7' RCB
2246	11534.6217	11020.8343	CONNECT 30" RCP TO 12' x 7' RCB

GENERAL NOTES

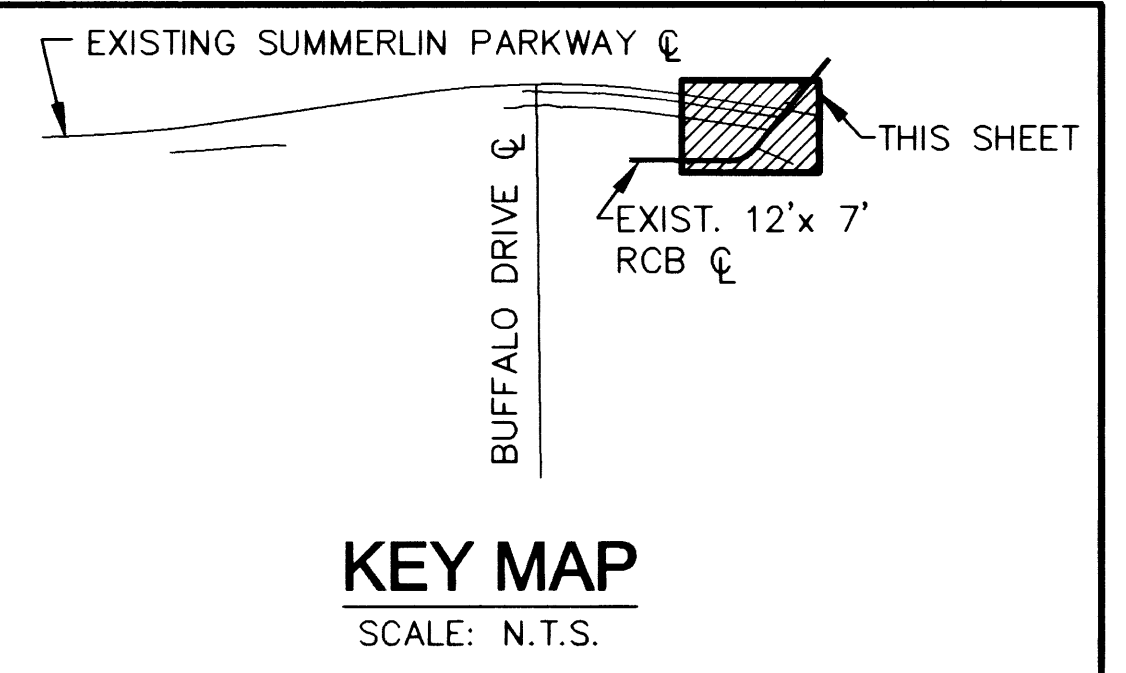
- FOR PIPE AND DRAINAGE CHANNEL PROFILES, SLOPES, HGL & INVERTS SEE SHEETS 10, 11 & 12
- FOR DRAINAGE CHANNEL PLANS SEE SHEET 9
- FOR DRAINAGE DETAILS SEE SHEET 16
- ALL AREAS TO BE CONSTRUCTED IN ARE LANDSCAPED WITH 2" TO 4" DIAMETER ROCK, ±6" IN DEPTH. CONTRACTOR SHALL REMOVE AND STOCKPILE ROCK PRIOR TO PERFORMING EARTHWORK OR INSTALLING PIPE AND DRAINAGE STRUCTURES. CONTRACTOR SHALL REGRADE DISTURBED AREA AND REPLACE ROCK AFTER CONSTRUCTION

CANYON VIEW APARTMENTS

PIRATES COVE APARTMENTS

LINE "B", "C", "D", "E", "F" & "G" STORM DRAIN PLAN

SCALE: 1" = 20'



DATE: _____

REVISIONS: _____

W.A. # W00000 DESIGN BY R.E.

SCALE (V) N/A DATE 6/30/98

SCALE (H) 1" = 20' N/A

FLD. BK. # N/A

PROJECT ENGINEERING CONSULTANTS, LTD.
7320 SMOKE RANCH ROAD, SUITE H
LAS VEGAS, NV. 89128 PH. (702) 360-1044

DEPARTMENT OF PUBLIC WORKS

PROJECT: SUMMERLIN PARKWAY DRAINAGE IMPROVEMENTS AT BUFFALO DRIVE

SHEET: STORM DRAIN PLAN SUMMERLIN PARKWAY STA. 589+00 TO 593+50

DRAWING NO. 307-V249 6

NO. 8540

16

L7002006.dwg, JMG, 06/25/98, 15:20:13