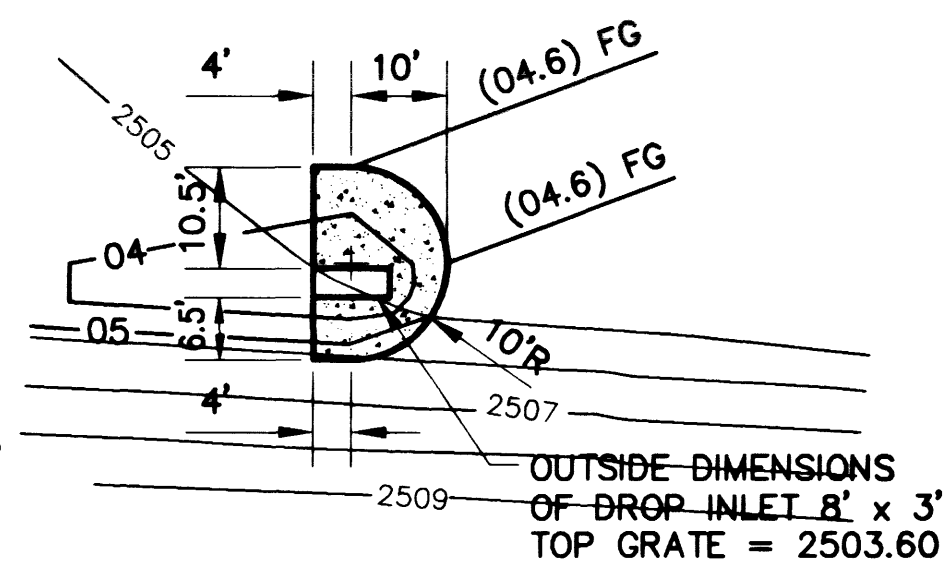
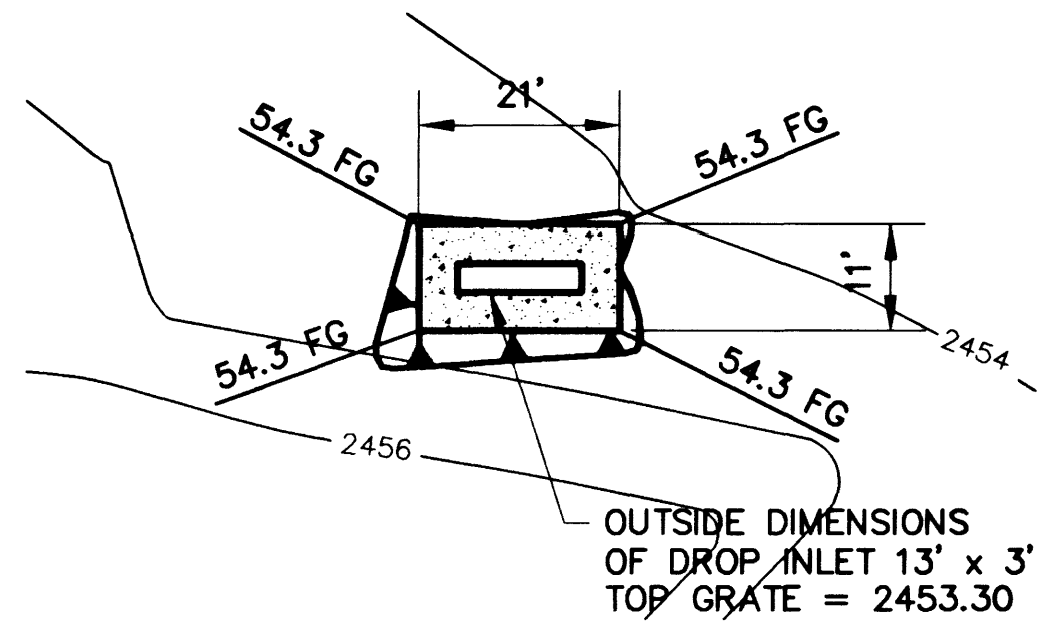


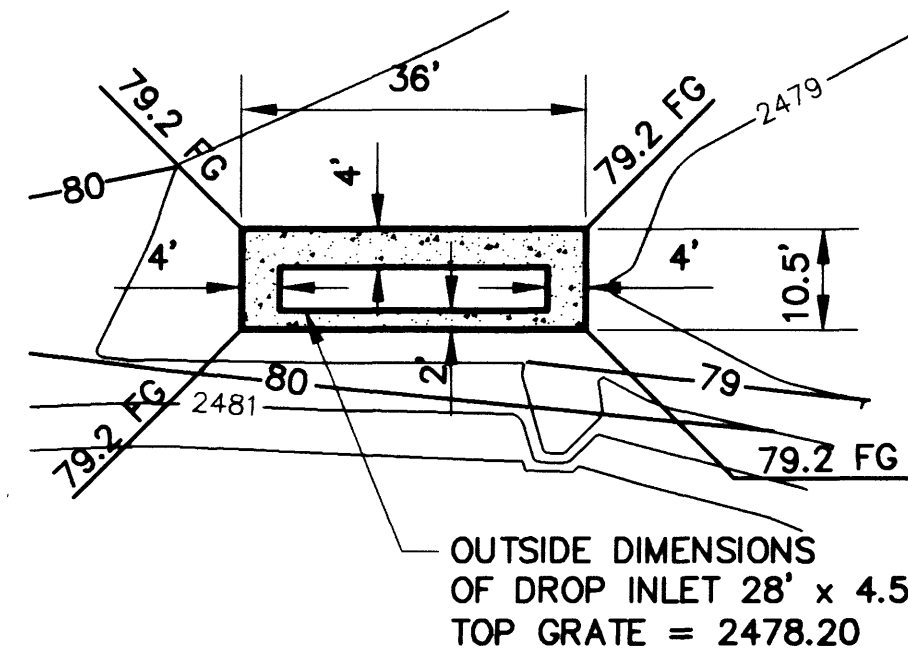
DROP INLET ⑤



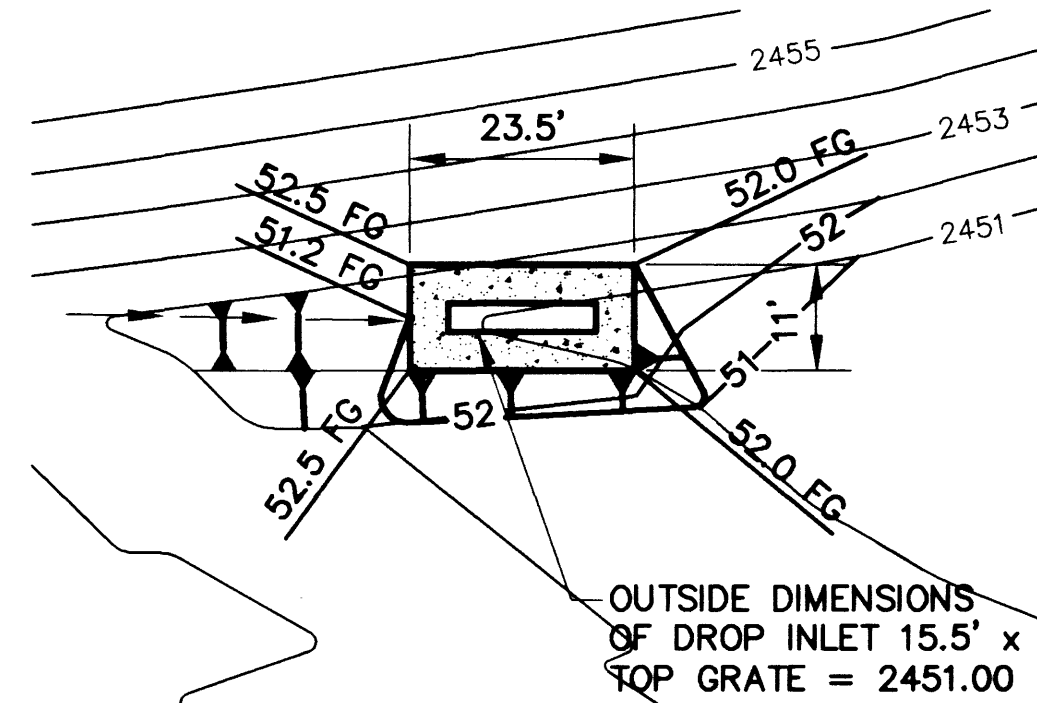
DROP INLET ①



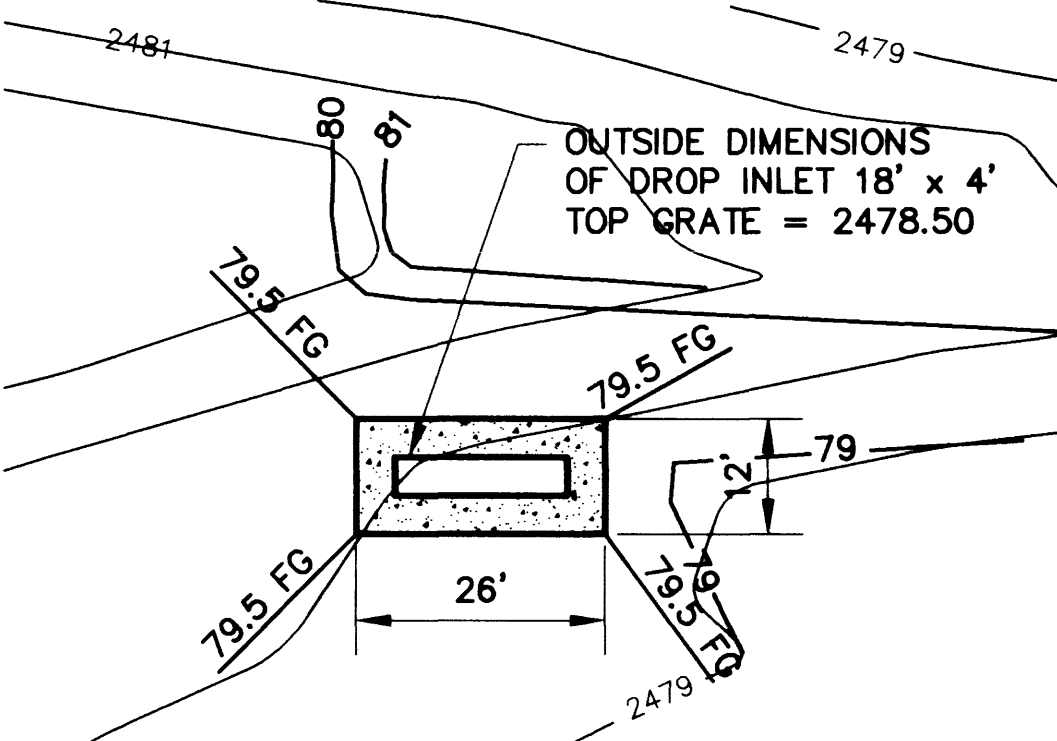
DROP INLET ⑥



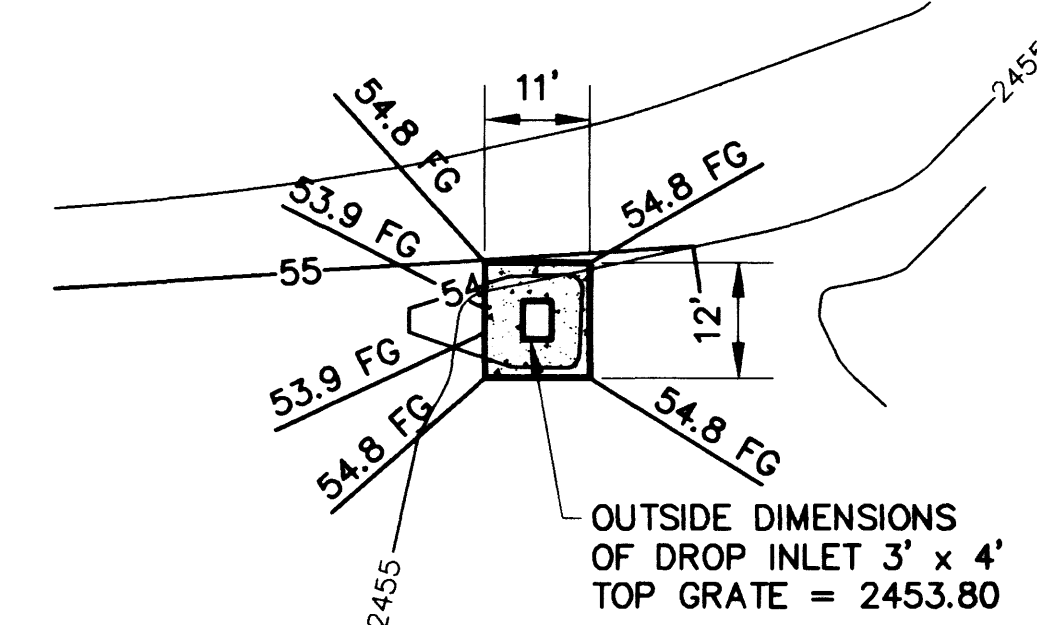
DROP INLET ②



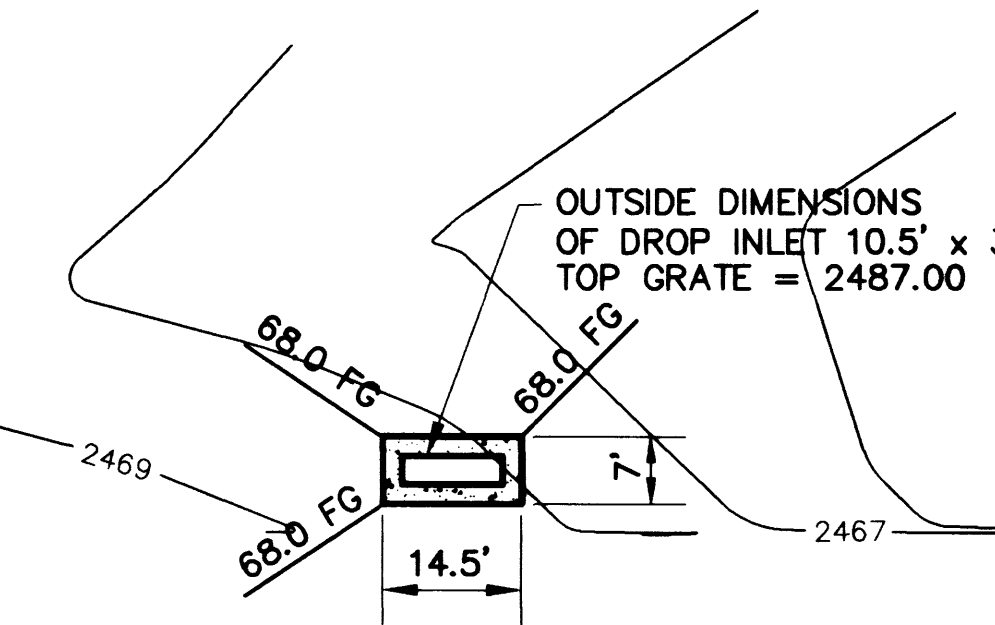
DROP INLET ⑦



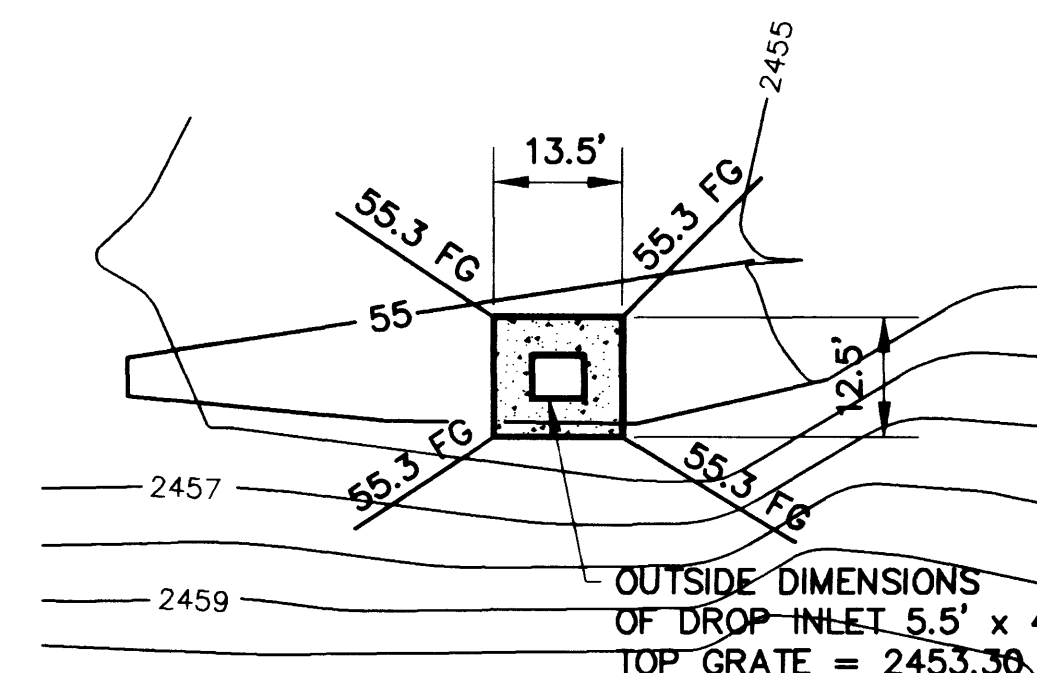
DROP INLET ③



DROP INLET ⑧

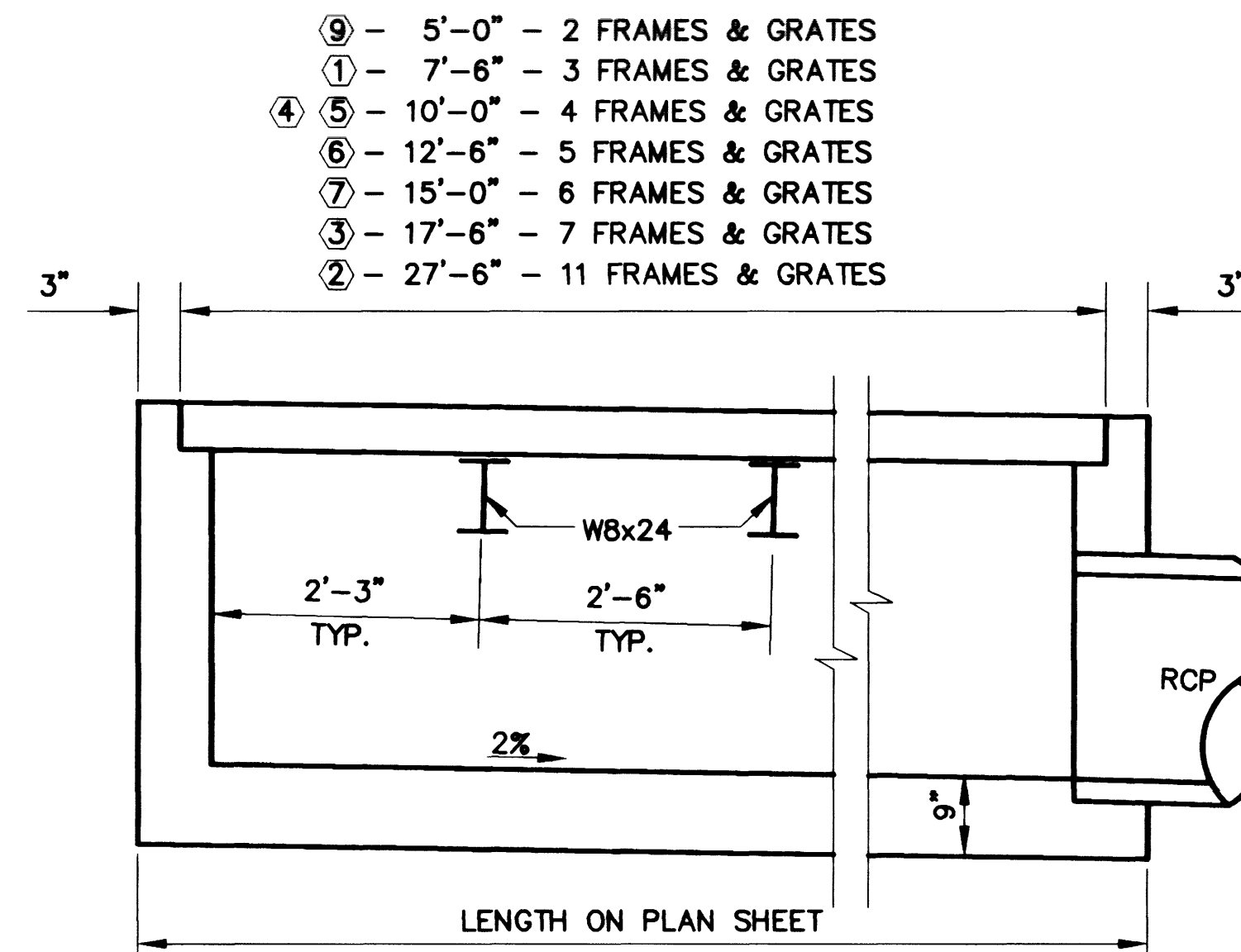


DROP INLET ④



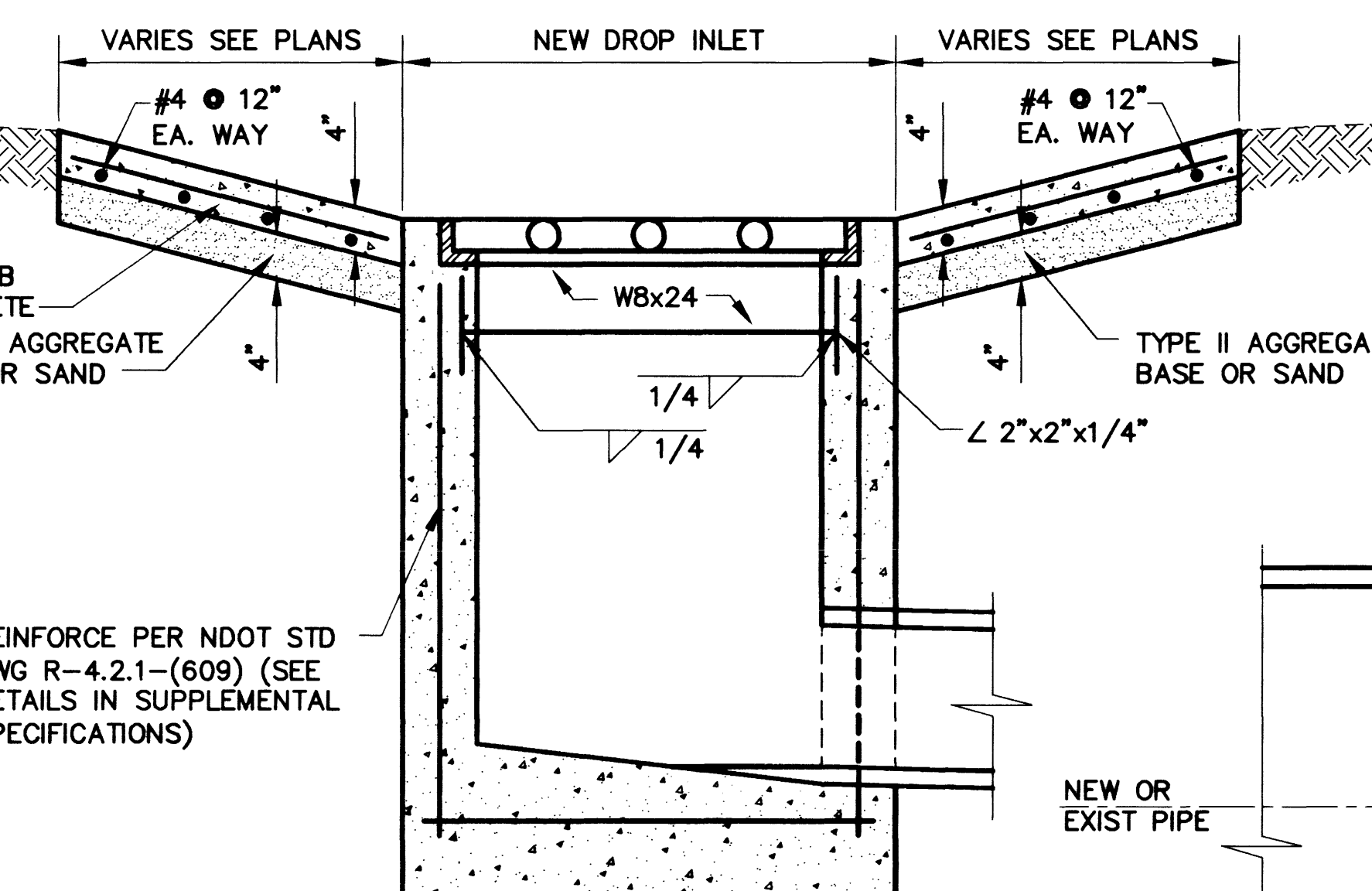
DROP INLET ⑨

F CONCRETE APRON DETAILS



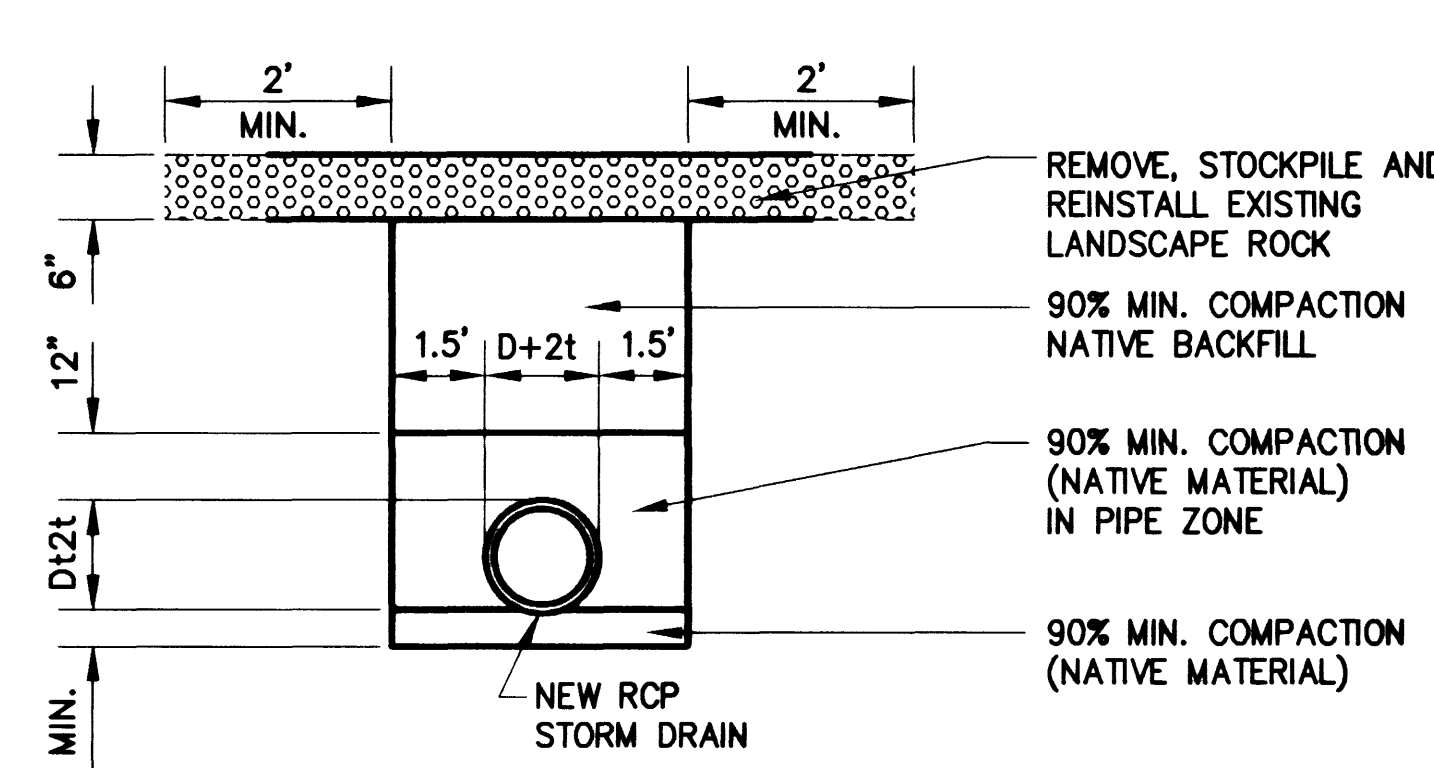
C MODIFIED SECTION A-A NDOT TYPE 2A DROP INLET

NOTE: FOR OTHER DIMENSIONS AND GENERAL NOTES SEE NDOT STD DWG R-4.2.1-(609). (SEE DETAILS IN SUPPLEMENTAL SPECIFICATIONS)



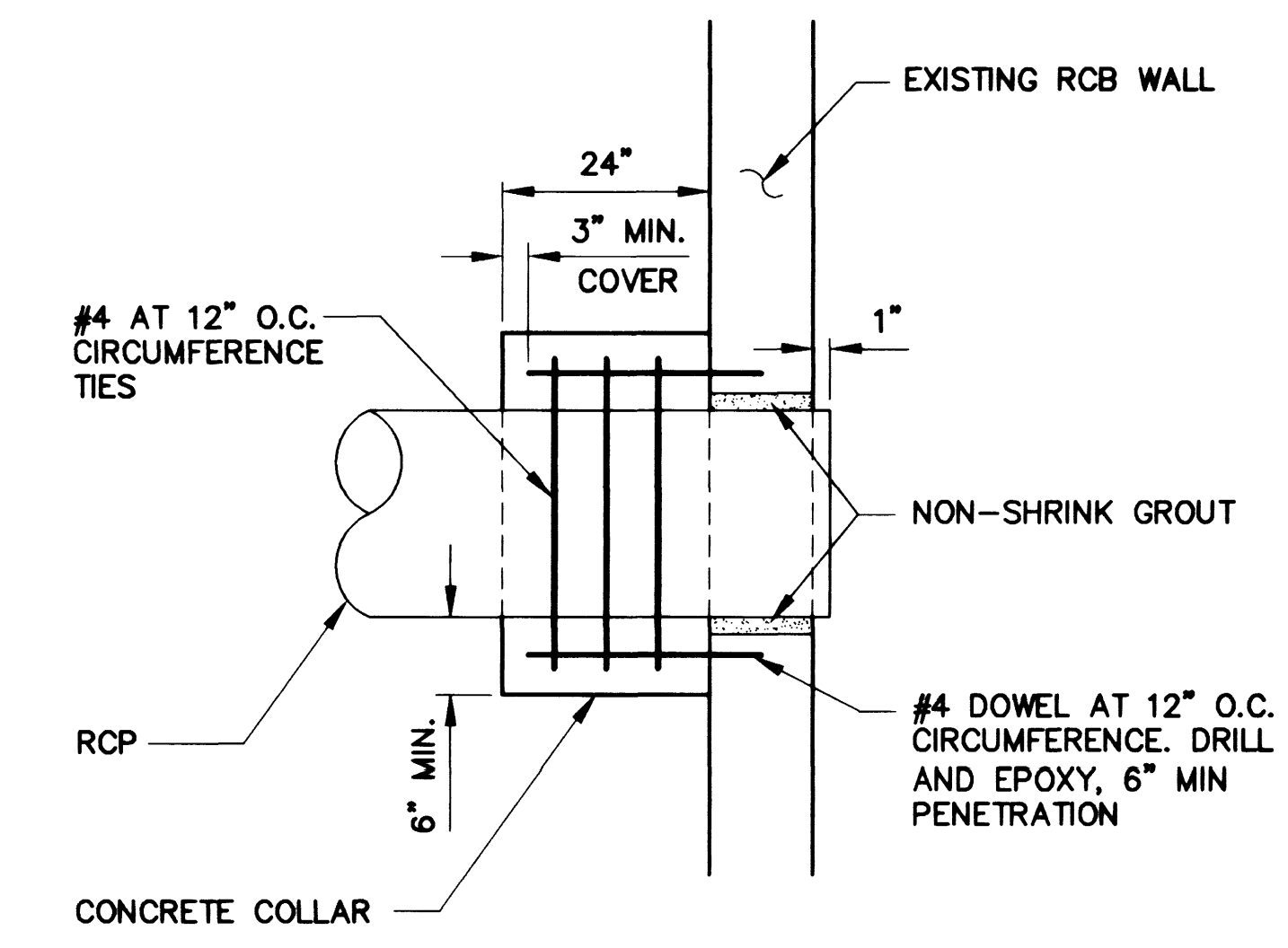
D CONCRETE APRON DETAIL

- LOCATIONS:
 ① STA. "J1" 6+39.85
 ③ STA. "B" 9+87.23 & ⑧ STA. "B" 21+04.33
 ② STA. "C" 20+01.25 & ⑨ STA. "C" 31+31.04
 ④ STA. "RCB" 29+38.31 & ⑤ STA. "RCB" 32+96.34
 ⑥ STA. "RCB" 34+78.58 & ⑦ STA. "RCB" 35+76.94



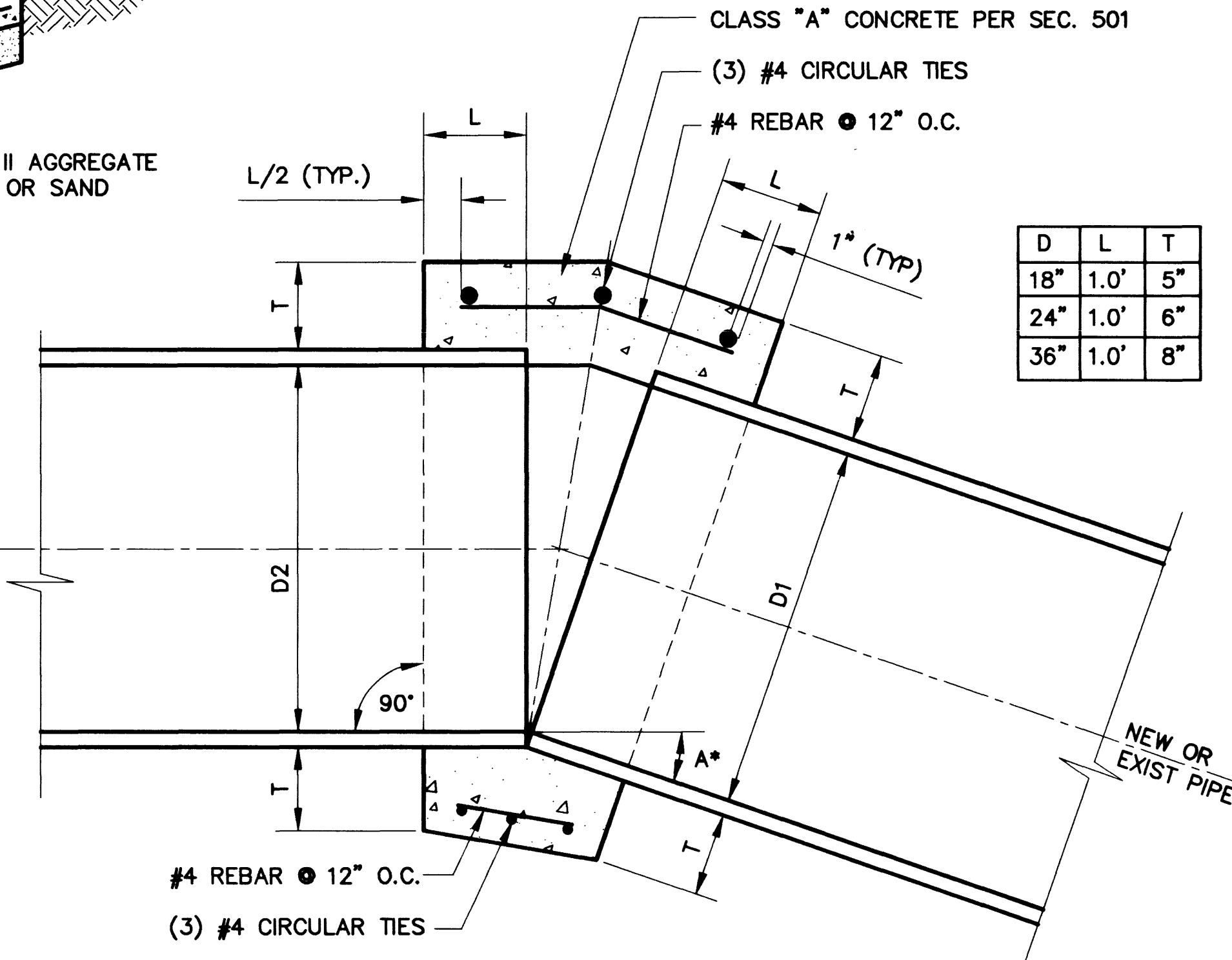
E STORM DRAIN TRENCH SECTION

FOR LINES "A", "B", "C", "D", "E", "F" & "G" SHOWN ON SHEETS 4, 5 & 6



A RCP PIPE THRU WALL

FOR LINES "B", "C", "D", "E", "F" & "G" (SEE SHEET 6)



B CONCRETE PIPE COLLAR

1. A CONCRETE COLLAR IS REQUIRED WHERE PIPES OF DIFFERENT DIAMETERS OR MATERIALS ARE JOINED, OR WHERE THE CHANGE IN ALIGNMENT OR GRADE EXCEEDS THAT ALLOWED FOR ON ORDINARY JOINTS.
 2. WHERE PIPES OF DIFFERENT DIAMETERS ARE JOINED WITH A CONCRETE COLLAR "L" AND "T" SHOULD BE THOSE OF THE LARGER PIPE. "D"="D1" OR "D2", WHICHEVER IS GREATER.
 3. FOR PIPE SIZES NOT LISTED, USE NEXT SIZE LARGER.
 4. THE DIAMETER OF THE CIRCULAR TIES SHALL BE: OUTSIDE DIAMETER OF LARGER PIPE PLUS 8 INCHES.
 5. FIELD CLOSURES OF PIPE OF THE SAME DIAMETER AND WITHOUT CHANGE IN GRADE OR ALIGNMENT SHALL BE MADE WITH A CORRECT COLLAR.
- *A=ANGLE OF DEFLECTION

| D | L | T |
|-----|------|----|
| 18" | 1.0' | 5" |
| 24" | 1.0' | 6" |
| 36" | 1.0' | 8" |

- ⑨ - 5'-0" - 2 FRAMES & GRATES
- ① - 7'-6" - 3 FRAMES & GRATES
- ④ ⑤ - 10'-0" - 4 FRAMES & GRATES
- ⑥ - 12'-6" - 5 FRAMES & GRATES
- ⑦ - 15'-0" - 6 FRAMES & GRATES
- ③ - 17'-6" - 7 FRAMES & GRATES
- ② - 27'-6" - 11 FRAMES & GRATES

DATE: _____

REVISIONS: _____

SCALE (V): N/A DATE: 6/30/98

SCALE (H): N/A DATE: 6/30/98

W.A. # W00000 DESIGN BY: R.E.

PROJECT: SUMMERLIN PARKWAY DRAINAGE IMPROVEMENTS AT BUFFALO DRIVE

CONTRACT: _____

DEPARTMENT OF PUBLIC WORKS

SHEET: _____

REGISTERED PROFESSIONAL ENGINEER

RICHARD A. ENGLISH

NO. 8540

DRAWING NO. 307-V249 16

L7002c16.dwg JMG 09/02/98 14:10:09