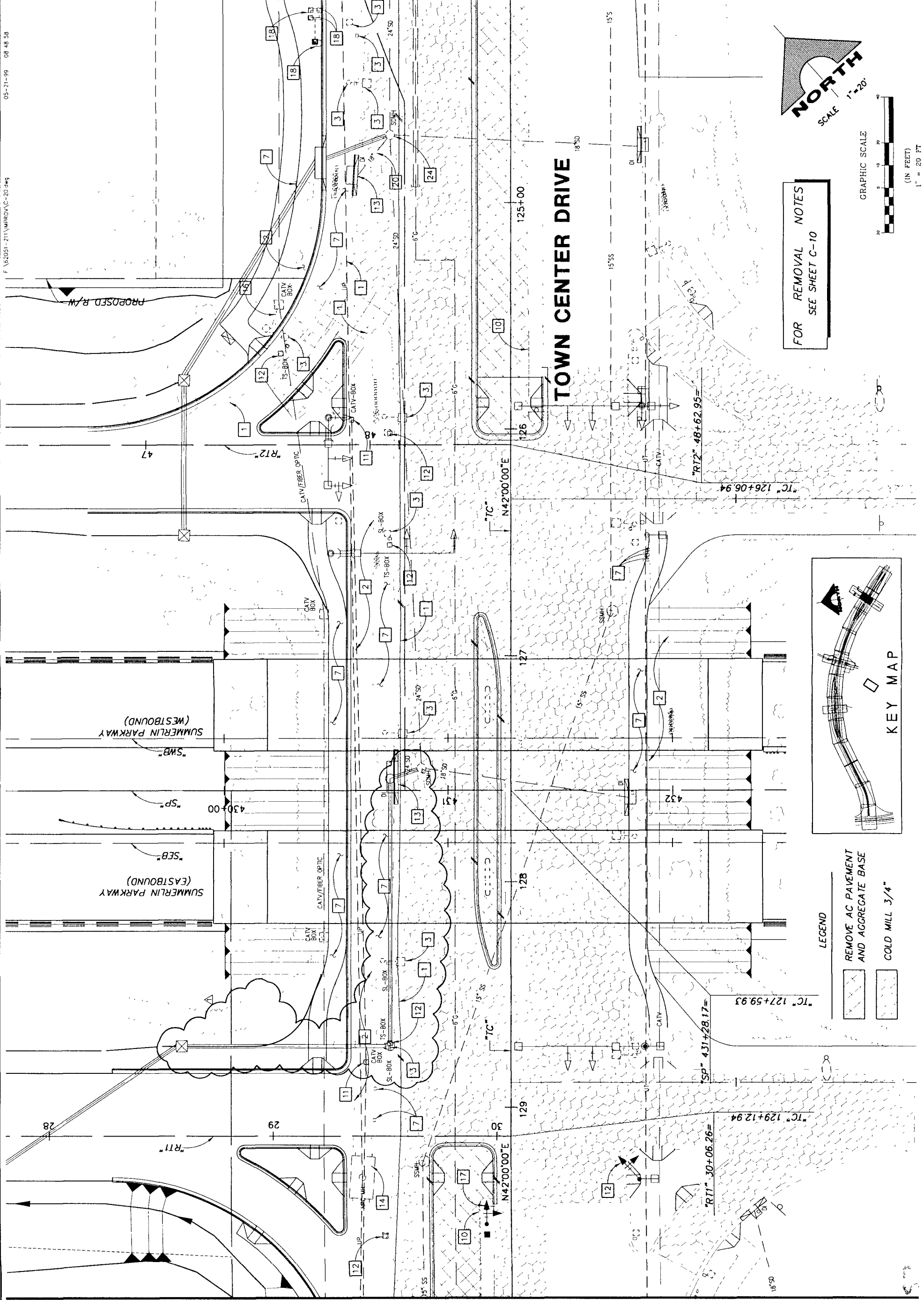
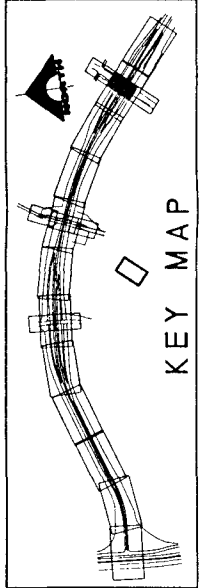
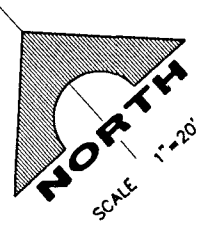


MATCHLINE - "TC" 129+85 SEE SHEET C-19

MATCHLINE - "TC" 124+09 SEE SHEET C-21



FOR REMOVAL NOTES
SEE SHEET C-10



- LEGEND
- REMOVE AC PAVEMENT AND AGGREGATE BASE
 - COLD MILL 3/4"

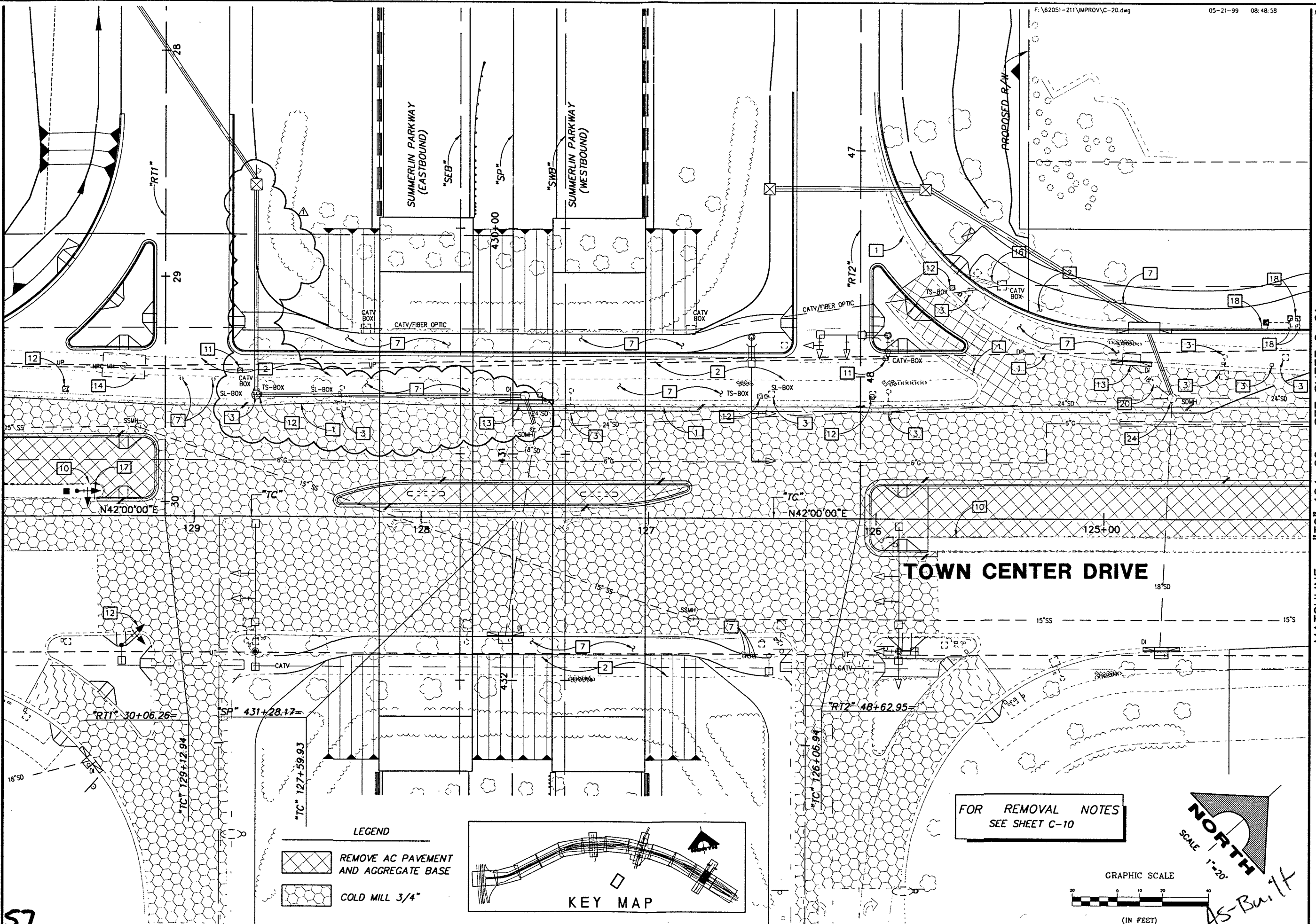
F:\62051-211\MPROV\C-20.dwg


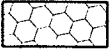
05-21-99 08:48:58

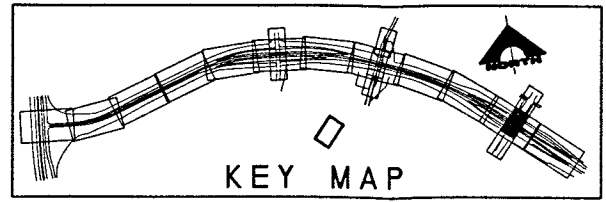
gpr:zmm

MATCHLINE - "TC" 129+85 SEE SHEET C-19

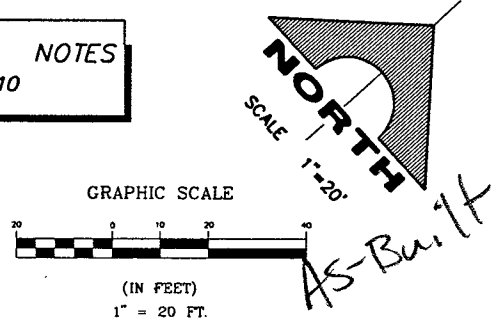
MATCHLINE - "TC" 124+09 SEE SHEET C-21



- LEGEND**
-  REMOVE AC PAVEMENT AND AGGREGATE BASE
 -  COLD MILL 3/4"

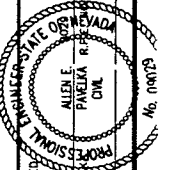


FOR REMOVAL NOTES
SEE SHEET C-10



JOB NO. 62051

47057

RECOMMENDED BY		DATE	
ALLEN PAVEN		5/21/99	
REVISION		DESCRIPTION	
1	5/21/99	REVISED STORM DRAIN	
			
G.C. WALLACE, INC. ENGINEERING ARCHITECTS 1555 SOUTH RAINBOW, LAS VEGAS, NEVADA 89102			
CITY OF LAS VEGAS SUMMERLIN PARKWAY WESTERN BELTWAY TO TOWN CENTER DR. REMOVAL AND RELOCATION PLAN TOWN CENTER DRIVE			
SHEET		DATE	
C-20		5/21/99	
107V-2975		SHT 20 OF 177	