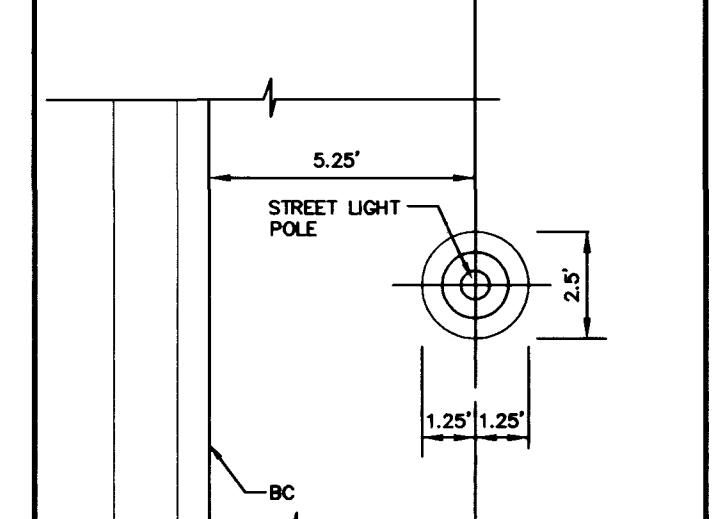
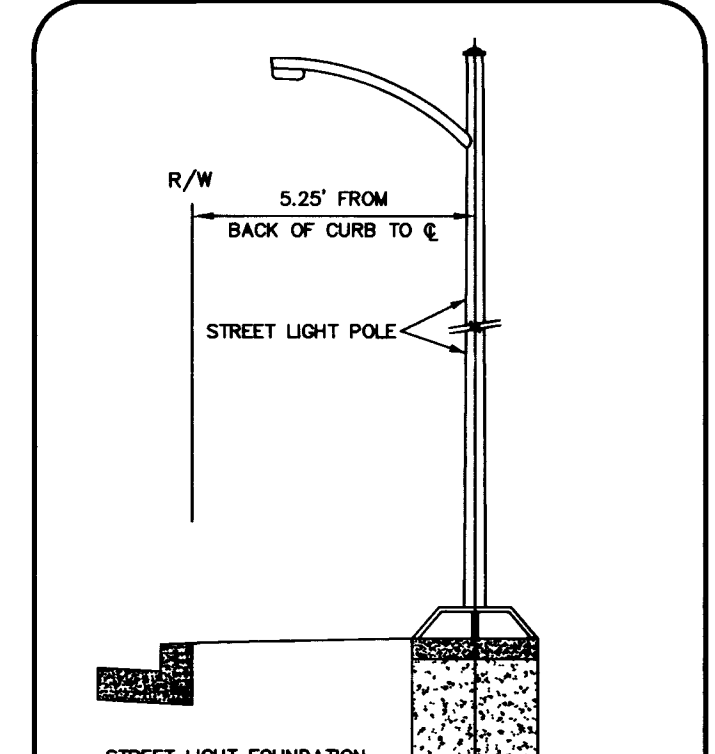


SCALE 1"=40'
40 0 40 80
SCALE FEET

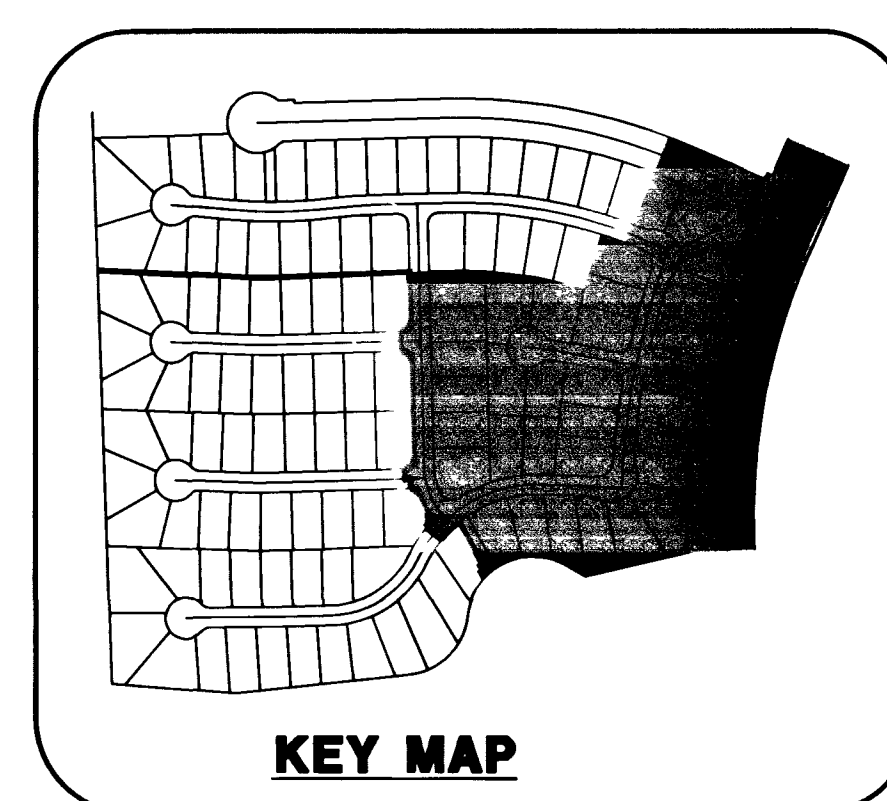
LEGEND

- FIRE HYDRANT WITH 6" G.V. AND F.H. LOCATOR BUTTON PER S.I.S. DWG. # U-33
- WATER LINE
- 3/4" WATER LATERAL AND 3/4" METER PER S.I.S. DWG. # U-23
- GATE VALVE
- SANITARY SEWER LINE
- SANITARY SEWER MANHOLE PER S.I.S. DWG. # D-2
- SEWER LATERAL
- STORM DRAIN LINE
- STORM DRAIN MANHOLE PER S.I.S. DWG. # D-2
- 2" BLOWOFF ASSEMBLY PER S.I.S. DWG. # U-32
- PRESSURE REDUCING VALVE
- BACK WATER VALVE
- TYPE 3 STREET LIGHT PER S.I.S. DWG. # E-2
- No. 3 1/2" PULL BOX
- 125A SERVICE



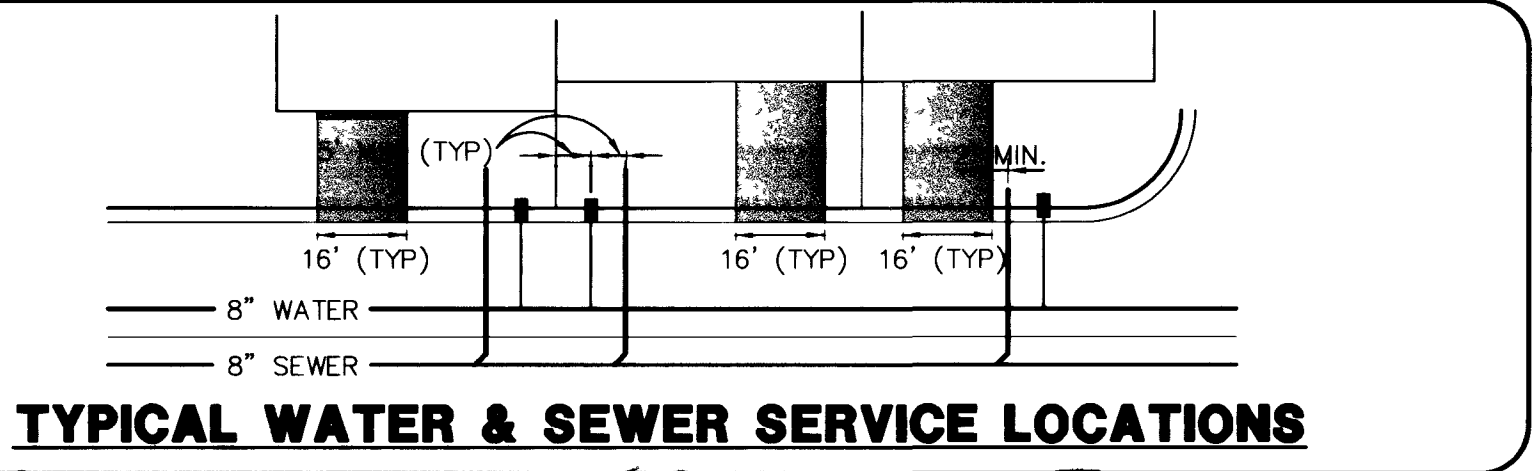
125 AMP 240V PAD MOUNT SERVICE WITH

- 1 2 POLE 60 AMP CIRCUIT BREAKER/S
- 1 1 POLE 15 AMP CIRCUIT BREAKER/S
- 1 1 POLE 40 AMP CIRCUIT BREAKER/S
- 1 1 POLE 60 AMP CIRCUIT BREAKER/S
- 1 2 POLE 60 AMP CONTACTOR/S
- 1 BY-PASS SWITCH PER CONTACTOR



Sewer Curve Table

No.	Delta	Radius	Tangent	Length
C1	24°58'14"	940.50	208.25	409.89
C2	14°3'42"	1497.00	22.58	45.16
C3	7°47'24"	1497.00	101.92	203.53
C4	9°07'27"	1497.00	119.45	236.39



BASIS OF BEARING

NORTH 89°54'38" EAST BEING THE BEARING OF THE SOUTH LINE OF THE SOUTHEAST QUARTER (SE 1/4) OF SECTION 35, TOWNSHIP 20 SOUTH, RANGE 59 EAST, M.D.M., AS SHOWN BY MAP THEREOF ON FILE IN BOOK 80, PAGE 14 OF PLATS IN THE CLARK COUNTY RECORDER'S OFFICE, CLARK COUNTY, NEVADA.

BENCHMARK

G.C. WALLACE PROJECT BENCHMARK NO. 107, A 2" BRASS DISK IN CONCRETE, LYING SOUTH 44°00'38" EAST, 641.6' FROM THE INTERSECTION OF HUALAPAI WAY AND TOWN CENTER DRIVE.

ELEVATION = 2877.96

CITY OF LAS VEGAS BENCHMARK OLVD01954 RIVET & PLATE IN TOP OF CURB NW SIDE OF TOWN CENTER DRIVE AND SOUTH CIRCLE ISLAND.

2725.923 NVD 1929 DATUM
2728.37 NAVD 1988 DATUM (831 6074 M)
2726.19 SUMMERLIN DATUM * PROJECT DATUM
SUMMERLIN DATUM = NAVD - 2.18'

APPROVALS

[Signature]
LAS VEGAS VALLEY WATER DISTRICT

4/07/99

AVOID CUTTING UNDERGROUND UTILITY LINES - IT'S COSTLY

Call before you Dig.

1-800-227-2600
UNDERGROUND SERVICE (USA)

DESIGN: [Blank] CHECK: [Blank] ISSUE DATE: [Blank] PLOT DATE: 04-05-99
DRAWN: [Blank] DATE: [Blank] REV: [Blank] DATE: [Blank]

LEWIS HOMES OF NEVADA
SUMMERLIN PARCEL "MM" UNIT 1
UTILITY PLAN 2

SHEET **C-6**
6 OF 17 SHEETS

3074-4605-1