

INTEROFFICE ROUTING CHECK LIST

1. PLAT GENERATED
By: AR Date: 13SEPT01

2. BLUELINE TO SURVEY FOR CHECK
By: AR Date:

3. CHECKED BLUELINES RETURNED TO AR FOR CORRECTIONS
By: SS Date: 24SEPT01

4. CORRECTIONS MADE
By: AR Date: 25SEPT01

5. MYLARS PLOTTED
By: Date:

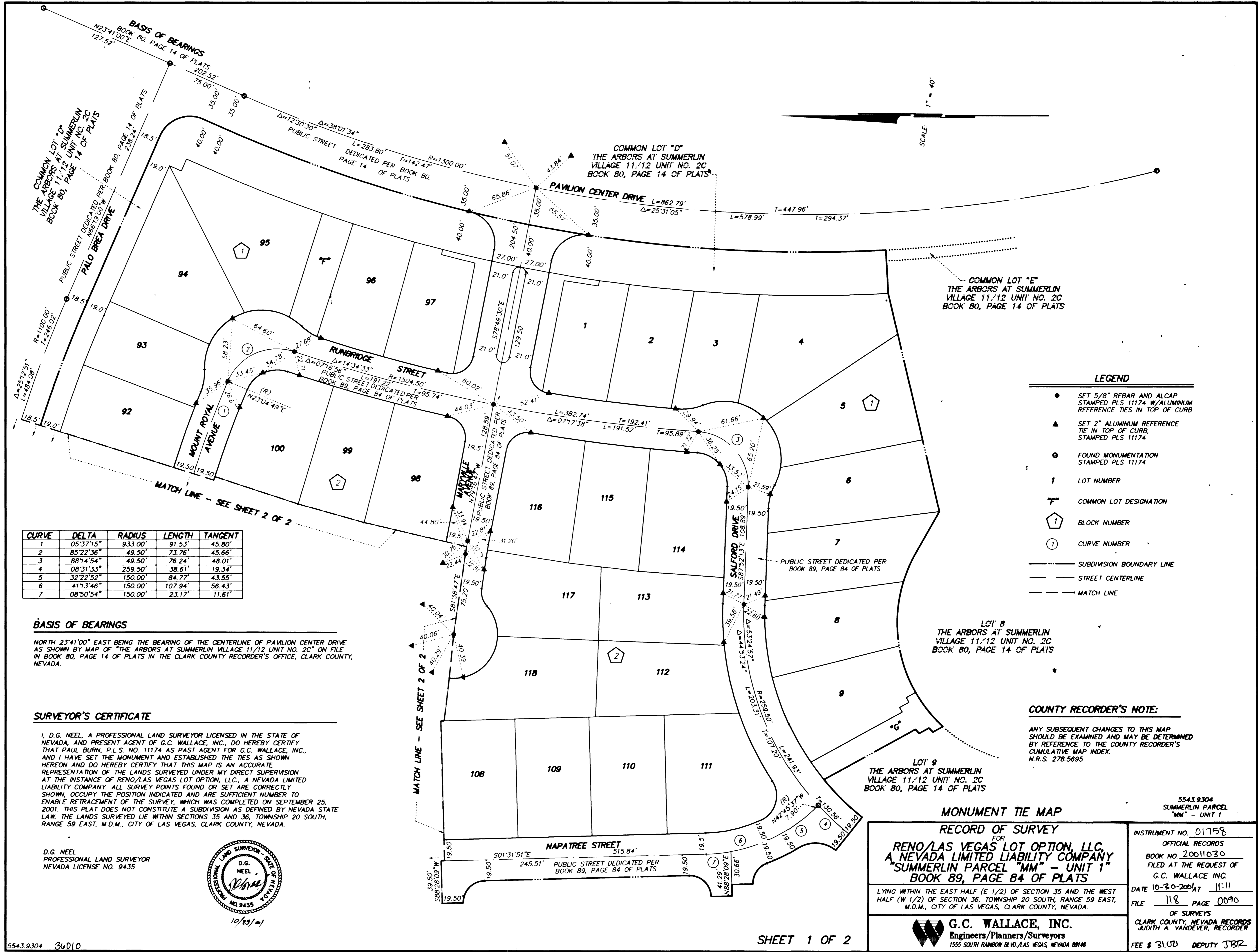
6. MYLARS TO SURVEY FOR BACK CHECK
By: Date:

7. BACK CHECK MADE
By: SS Date: 10-29-01

8. SURVEYOR SIGNED
By: [Signature] Date: 10/29/01

9. FILE INFORMATION
File Name: SPMMU1V51.DWG
Plotted: AR 13SEPT01 AR 25SEPT01

5543.9304 SUMMERLIN PARCEL "MM" - UNIT 1



- LEGEND**
- SET 5/8" REBAR AND ALCP STAMPED PLS 11174 W/ALUMINUM REFERENCE TIES IN TOP OF CURB
 - ▲ SET 2" ALUMINUM REFERENCE TIE IN TOP OF CURB, STAMPED PLS 11174
 - FOUND MONUMENTATION STAMPED PLS 11174
 - 1 LOT NUMBER
 - ⊔ COMMON LOT DESIGNATION
 - ⬠ BLOCK NUMBER
 - ① CURVE NUMBER
 - SUBDIVISION BOUNDARY LINE
 - STREET CENTERLINE
 - - - MATCH LINE

COUNTY RECORDER'S NOTE:
ANY SUBSEQUENT CHANGES TO THIS MAP SHOULD BE EXAMINED AND MAY BE DETERMINED BY REFERENCE TO THE COUNTY RECORDER'S CUMULATIVE MAP INDEX. N.R.S. 278.5695

MONUMENT TIE MAP

RECORD OF SURVEY
FOR
RENO/LAS VEGAS LOT OPTION, LLC.
A NEVADA LIMITED LIABILITY COMPANY
"SUMMERLIN PARCEL MM" - UNIT 1
BOOK 89, PAGE 84 OF PLATS

LYING WITHIN THE EAST HALF (E 1/2) OF SECTION 35 AND THE WEST HALF (W 1/2) OF SECTION 36, TOWNSHIP 20 SOUTH, RANGE 59 EAST, M.D.M., CITY OF LAS VEGAS, CLARK COUNTY, NEVADA.

G.C. WALLACE, INC.
Engineers/Planners/Surveyors
1555 SOUTH RAINBOW BLVD., LAS VEGAS, NEVADA 89146

INSTRUMENT NO. 01758
OFFICIAL RECORDS
BOOK NO. 20011030
FILED AT THE REQUEST OF G.C. WALLACE INC.
DATE 10-30-2001 AT 11:11
FILE 118 PAGE 0090
OF SURVEYS
CLARK COUNTY, NEVADA RECORDS
JUDITH A. VANDEVER, RECORDER
FEE \$ 31.00 DEPUTY JTB