

CURVE DATA (1 INDICATES CURVE NUMBER)

CURVE	DELTA	RADIUS	LENGTH	TANGENT
1	10°26'17"	1006.33'	183.33'	91.92'
2	10°26'17"	989.67'	180.30'	90.40'
3	10°26'17"	938.00'	181.81'	91.18'
4	10°26'17"	959.00'	174.71'	87.60'
5	10°26'17"	1037.00'	188.92'	94.72'
6	08°58'37"	989.00'	149.20'	74.74'
7	13°09'32"	941.87'	215.27'	109.61'
8	13°09'32"	950.00'	218.18'	109.57'
9	13°09'32"	958.33'	220.10'	110.53'
10	13°09'32"	911.00'	209.23'	105.08'
11	93°01'50"	24.11'	39.15'	25.42'
12	82°50'51"	27.37'	39.58'	24.15'
13	00°02'26"	989.00'	0.70'	0.35'

NOTE: CURVE DATA REPRESENTS PARTIAL CURVE, THIS SHEET ONLY.

CONSTRUCTION NOTES

- IMPROVEMENTS**
- (1) INSTALL A.C. PAVEMENT PER STREET SECTIONS, SHEET NO. 25
 - (2) INSTALL "L" TYPE CURB AND GUTTER (S-47)
 - (3) INSTALL "A" TYPE ISLAND CURB (S-50)
 - (4) INSTALL CONCRETE CROSS GUTTER (S-64)

- SEWER**
- (5) INSTALL 12" SEWER PIPE
 - (6) INSTALL SEWER MANHOLE (S01-B 1)
 - (7) INSTALL 6" SEWER LATERAL (U-20)
 - (8) INSTALL CONCRETE ENCASEMENT (C-24)

- WATER**
- (9) INSTALL 12" WATER PIPE (U-20)
 - (10) REMOVE CAP AND CONNECT TO EXISTING STUB (U-20)
 - (11) INSTALL 12" X 12" X 12" TEE
 - (12) INSTALL 90° ELBOW WITH THRUST BLOCK
 - (13) INSTALL 12" GATE VALVE (U-34)

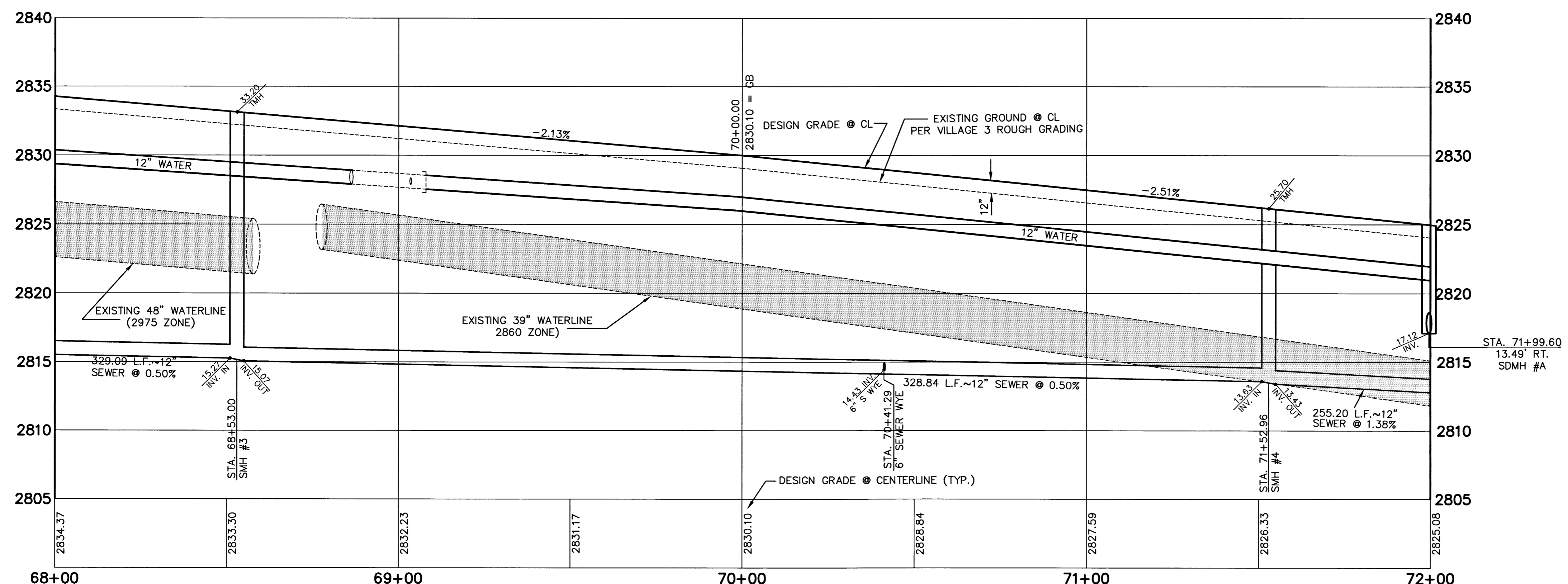
- STORM DRAIN**
- (14) INSTALL 18" STORM DRAIN PIPE (1350-D) (U-20)
 - (15) INSTALL TYPE II STORM DRAIN MANHOLE (D1.2)

- STREET LIGHTING**
- (16) STREET LIGHT OR COMMON TRENCH, SEE ELECTRICAL PLANS
 - (17) STREET LIGHT, SEE ELECTRICAL PLANS (E-2)

- IRRIGATION**
- (18) BANK "A", 1-6" & 2-4" SDR35 PVC
 - (19) BANK "B", 2-4" SDR35 PVC



APPROVAL:
[Signature] 10-30-95
 LAS VEGAS VALLEY WATER DISTRICT
 12/21/95



SHEET
14
 OF 26

JOB NO. 62003.205

DATE: 12/21/95

RECOMMENDED BY: [Signature]
 CHECKED BY: [Signature]
 DESIGNED BY: [Signature]
 DRAWN BY: [Signature]
 DATE: 12/21/95
 PROJECT: 855 SOUTH RAINBOW BLVD./LAS VEGAS, NEVADA 89101
 G. C. WALLACE, INC.
 Engineering/Architecture
 APPROVAL: [Signature] 12/21/95
 SHEET 14 OF 26