

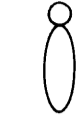
PANEL NO.	TC/PKWAY-1	MAIN 125A				MOUNTING PEDESTAL				NEUTRAL FULL	
		PHASE 1-PHASE				WIRE 3-WIRE				MIN. KAIC	10 RMS SYM
DESCRIPTION	WATTS		BKR	CKT	CKT	BKR	WATTS		DESCRIPTION		
	L1	L2					L1	L2			
1 TOWN CENTER DRIVE NORTH	1,050		2	1	2	1	200		PHOTOCELL/CONTACTOR CKT 1		
"		1,050	60	3	4	1	200		PHOTOCELL/CONTACTOR CKT 2		
2 TOWN CENTER DRIVE SOUTH	1,050		2	5	6	1					
"			60	7	8				SPACE		
"			2	9	10						
"			60	11	12						
4,400W/240V = 18.3A		2,100		2,100		200		200			

SERVICE PEDESTAL TO BE LOCATED NEAR THE NORTHWEST CORNER OF THE INTERIM RAMPS FOR SUMMERLIN PARKWAY TO TOWN CENTER DRIVE. LOADS SHOWN ARE THE HIGHEST CONNECTED LOAD DURING ALL PHASES OF CONSTRUCTION.

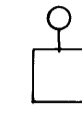
PANEL NO.	TC/PKWAY-2	MAIN 125A				MOUNTING PEDESTAL				NEUTRAL FULL	
		PHASE 1-PHASE				WIRE 3-WIRE				MIN. KAIC	10 RMS SYM
DESCRIPTION	WATTS		BKR	CKT	CKT	BKR	WATTS		DESCRIPTION		
	L1	L2					L1	L2			
1 TOWN CENTER/SUMMERLIN PKWY MEDIAN CROSSOVERS	600		2	1	2	1	200		PHOTOCELL/CONTACTOR CKT 1		
"		600	60	3	4	1			SPARE		
2 SUMMERLIN PKWY/TOWN CTR ENTRANCE/EXIT RAMP	1,200		2	5	6	1			SPARE		
"			60	7	8						
SPARE			2	9	10						
"			60	11	12						
3,800W/240V = 15.8A		1,800		1,800		200		-			

SERVICE PEDESTAL TO BE LOCATED NEAR EXISTING NEVADA POWER COMPANY SERVICE TRANSFORMER AT EAST END OF EASTBOUND ENTRANCE RAMP FROM TOWN CENTER DRIVE TO SUMMERLIN PARKWAY. LOADS CALCULATED ARE FOR HIGHEST CONNECTED LOAD DURING ALL PHASES OF CONSTRUCTION.

LEGEND



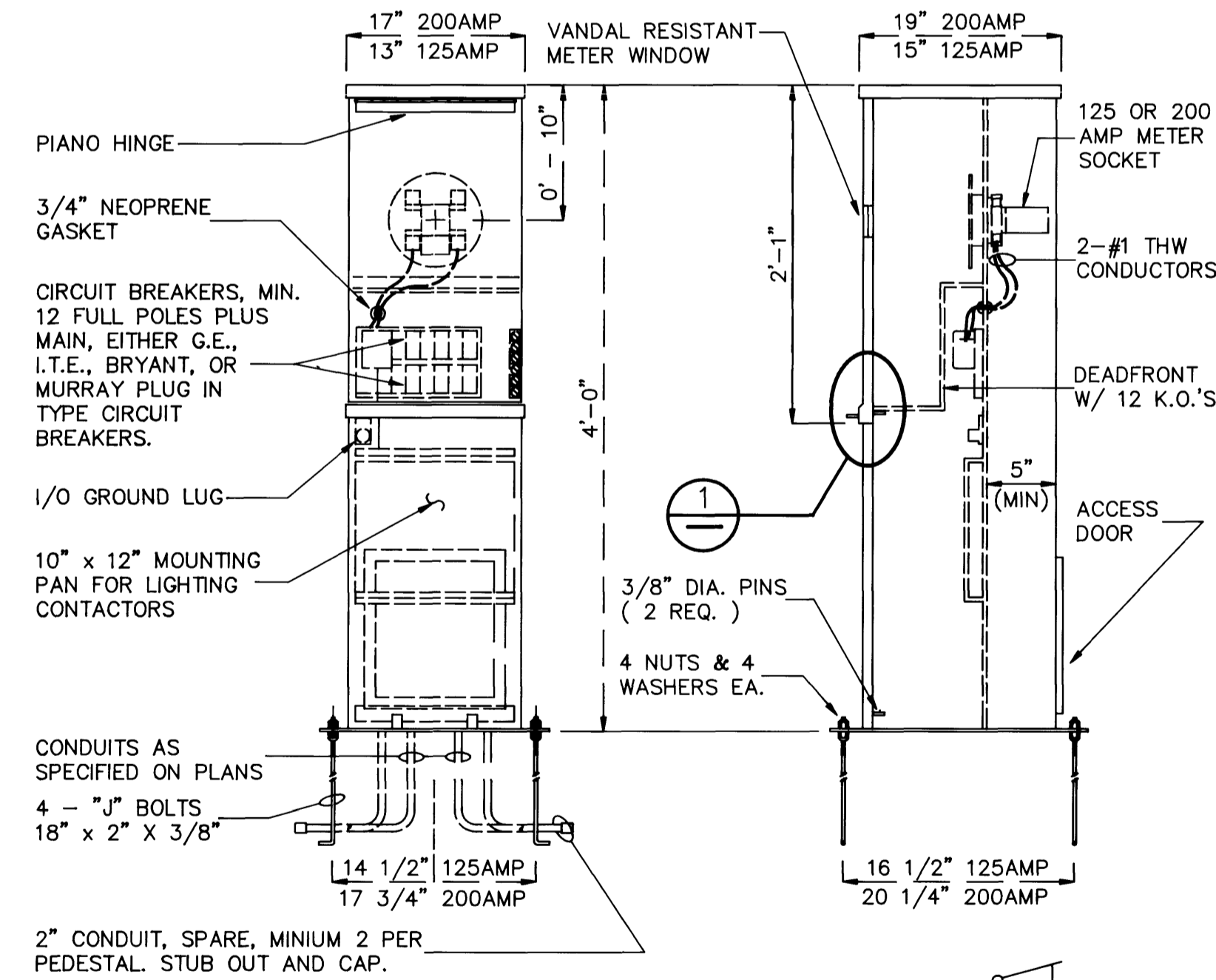
CLARK COUNTY STREET LIGHTING STANDARD. FOUNDATIONS, POLES, SAFETY BASES AND LUMINAIRES SHALL MEET THE REQUIREMENTS OF THE CITY OF LAS VEGAS AND CLARK COUNTY UNIFORM STANDARD DRAWINGS FOR THE AREAS DESIGNATED.



SUMMERLIN STREET LIGHTING STANDARD. FOUNDATIONS, POLES, AND LUMINAIRES SHALL MEET THE REQUIREMENTS OF SUMMERLIN STANDARDS.

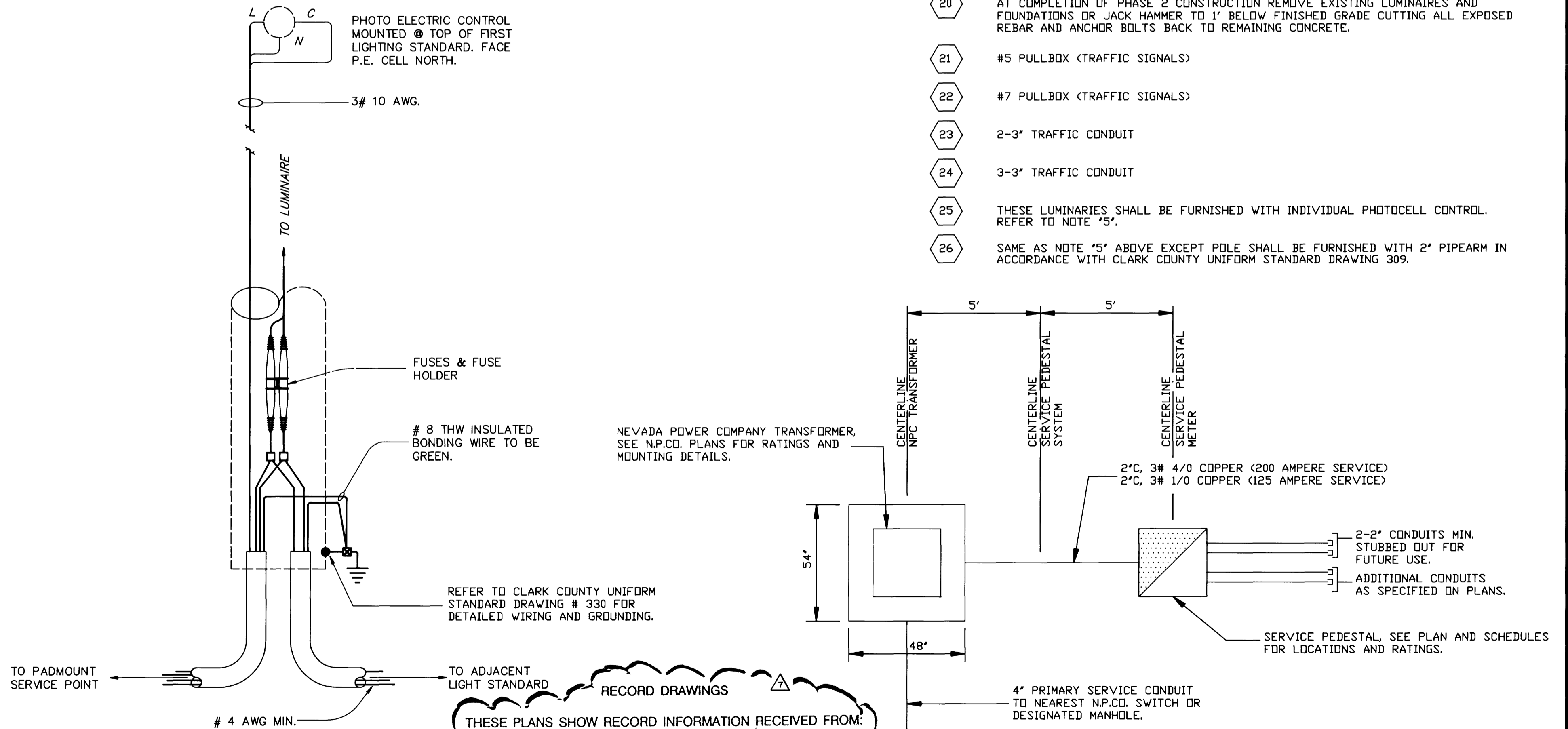
NOTES:

- 1 SERVICE POINT "TC/PKWAY-1", 120/240 VOLT, 3-WIRE, 200 AMPERE METERED SERVICE PEDESTAL. SEE SERVICE PEDESTAL DETAIL.
- 2 SERVICE POINT "TC/PKWAY-2", 120/240 VOLT, 3-WIRE, 125 AMPERE METERED SERVICE PEDESTAL. TO BE SUPPLIED POWER FROM AN EXISTING NEVADA POWER COMPANY TRANSFORMER NEAR THE LOCATION SHOWN ON THE PLAN. SEE SERVICE PEDESTAL DETAIL.
- 3 SUMMERLIN STANDARD LUMINAIRE AND POLE TO BE RELOCATED TO NEW POSITION AS SHOWN ON THE PLAN. EXTEND EXISTING CONDUIT AND CONDUCTORS TO NEW LOCATION.
- 4 SUMMERLIN STANDARD LUMINAIRE AND POLE TO BE INSTALLED AT THE LOCATION SHOWN. REFER TO STANDARDS FOR POLE HEIGHT, LUMINAIRE WATTAGE AND INSTALLATION DETAILS.
- 5 ROADWAY LUMINAIRE ASSEMBLY CONSISTING OF 250 WATT HIGH PRESSURE SODIUM, GENERAL ELECTRIC M-400R2 "POWR-BODY" LUMINAIRE WITH MAGNETIC REGULATOR TYPE BALLAST AND CUTOFF OPTICS; STREET LIGHTING STANDARD WITH 12' ARM IN ACCORDANCE WITH CLARK COUNTY UNIFORM STANDARD DRAWING 312; SAFETY BASE FOR STREET LIGHTING STANDARD IN ACCORDANCE WITH CLARK COUNTY UNIFORM STANDARD DRAWING 314; STREET LIGHT FOUNDATION IN ACCORDANCE WITH CLARK COUNTY UNIFORM STANDARD DRAWING 317.
- 6 NO. 3-1/2 PULL BOX.
- 7 NO. 5 PULL BOX. (STREET LIGHTS)
- 8 1-1/4" CONDUIT, EXISTING, TO BE EXTENDED TO NEW LOCATION FOR EXISTING LUMINAIRE. INSTALL NEW CONDUCTORS FROM NEAREST EXISTING POLE BASE, INSTALL PULL BOXES AND EXTEND CONDUIT ONLY FROM RELOCATED POLE TO NEW POLES.
- 9 1-1/4" CONDUIT ONLY.
- 10 1-1/4" C, 2#4, 1#8 THW, GND.
- 11 1-1/4" C, 4#4, 1#8 THW, GND.
- 12 1-1/4" C, 2#4, 1#8 THW, GND. 3#10 PHOTOCELL.
- 13 1-1/2" C, 4#4, 1#8 THW, GND. 3#10 PHOTOCELL.
- 14 USE EXISTING SLEEVES WHERE AVAILABLE. EXTEND 1' MIN. BEYOND EDGE OF EXISTING PAVEMENT.
- 15 EXISTING LUMINAIRES, POLES AND SAFETY BASES RELOCATED FROM PHASE 1 CROSSOVER RAMP. COMPLETE ASSEMBLY SHALL BE AS DESCRIBED IN NOTE 5 ABOVE.
- 16 EXISTING CIRCUIT AND PHOTOCELL CONTROL TO BE DISCONNECTED FROM PHASE 1 CROSSOVER RAMP LIGHTING AND RECONNECTED FOR USE IN PHASE II CROSSOVER RAMP.
- 17 SEE NOTE 15. RELOCATE PHASE I LUMINAIRES AND REMOVE EXISTING FOUNDATIONS OR JACKHAMMER TO 1' BELOW FINISHED GRADE, CUTTING ALL EXPOSED REBAR AND ANCHOR BOLTS BACK TO REMAINING CONCRETE.
- 18 EXISTING SUMMERLIN LUMINAIRE TO REMAIN IN PLACE.
- 19 EXTEND EXISTING PHASE I CONDUIT TO PHASE II LIGHTING ADDITIONS ALONG WITH THE CONDUCTORS INDICATED.
- 20 AT COMPLETION OF PHASE 2 CONSTRUCTION REMOVE EXISTING LUMINAIRES AND FOUNDATIONS OR JACKHAMMER TO 1' BELOW FINISHED GRADE CUTTING ALL EXPOSED REBAR AND ANCHOR BOLTS BACK TO REMAINING CONCRETE.
- 21 #5 PULLBOX (TRAFFIC SIGNALS)
- 22 #7 PULLBOX (TRAFFIC SIGNALS)
- 23 2-3" TRAFFIC CONDUIT
- 24 3-3" TRAFFIC CONDUIT
- 25 THESE LUMINAIRES SHALL BE FURNISHED WITH INDIVIDUAL PHOTOCELL CONTROL. REFER TO NOTE "5".
- 26 SAME AS NOTE "5" ABOVE EXCEPT POLE SHALL BE FURNISHED WITH 2" PIPEARM IN ACCORDANCE WITH CLARK COUNTY UNIFORM STANDARD DRAWING 309.



- NOTES:
1. FINISH: ZINC CHROMATE PRIMER w/GREEN OR BEIGE BAKED ENAMEL.
 2. BODY: 12 GA. SHEET METAL
 3. FRONT COVER: 14 GA. SHEET METAL ALL OTHER SHEET METAL TO BE 16 GA.
 4. MAIN BREAKER TO BE AS SPECIFIED.
 5. ALL BUS MATERIAL AND ALL WIRING SHALL BE COPPER

SINGLE METER PADMOUNTED SERVICE POINT (N.T.S.)



LIGHTING POLE WIRING DIAGRAM AT FIRST LIGHTING STANDARD NOT TO SCALE (AT FIRST LIGHTING STANDARD)

RECORD DRAWINGS
 THESE PLANS SHOW RECORD INFORMATION RECEIVED FROM:
 CONTRACTOR: **WELLS CARGO/ACME ELECTRIC**
 DATE: **OCTOBER 22, 1993**
 THIS DATA MAY OR MAY NOT REFLECT THE ACTUAL FIELD LOCATIONS. ALL DATA SHOULD BE CONFIRMED PRIOR TO USE ON DEVELOPMENT OR ENGINEERING PLANS.

SERVICE POINT DETAIL

- 1 "TCD" STA. 124+20 100' RT.
- 2 "SP" STA. 452+85 120' RT.

RECORD DRAWINGS
 10/22/93
 12/17/92
 11/15/92
 DATE
 APPROVAL
 G. C. WALLACE, INC.
 Engineering/Architecture
 1525 SOUTH RAINBOW BLVD./LAS VEGAS, NEVADA 89102
 SUMMERLIN
 TOWN CENTER DR. AT GRADE CROSSING
 PANEL SCHEDULE, DETAILS,
 & NOTES
 SHEET
29
 SHT 29 OF 29
 107-12066