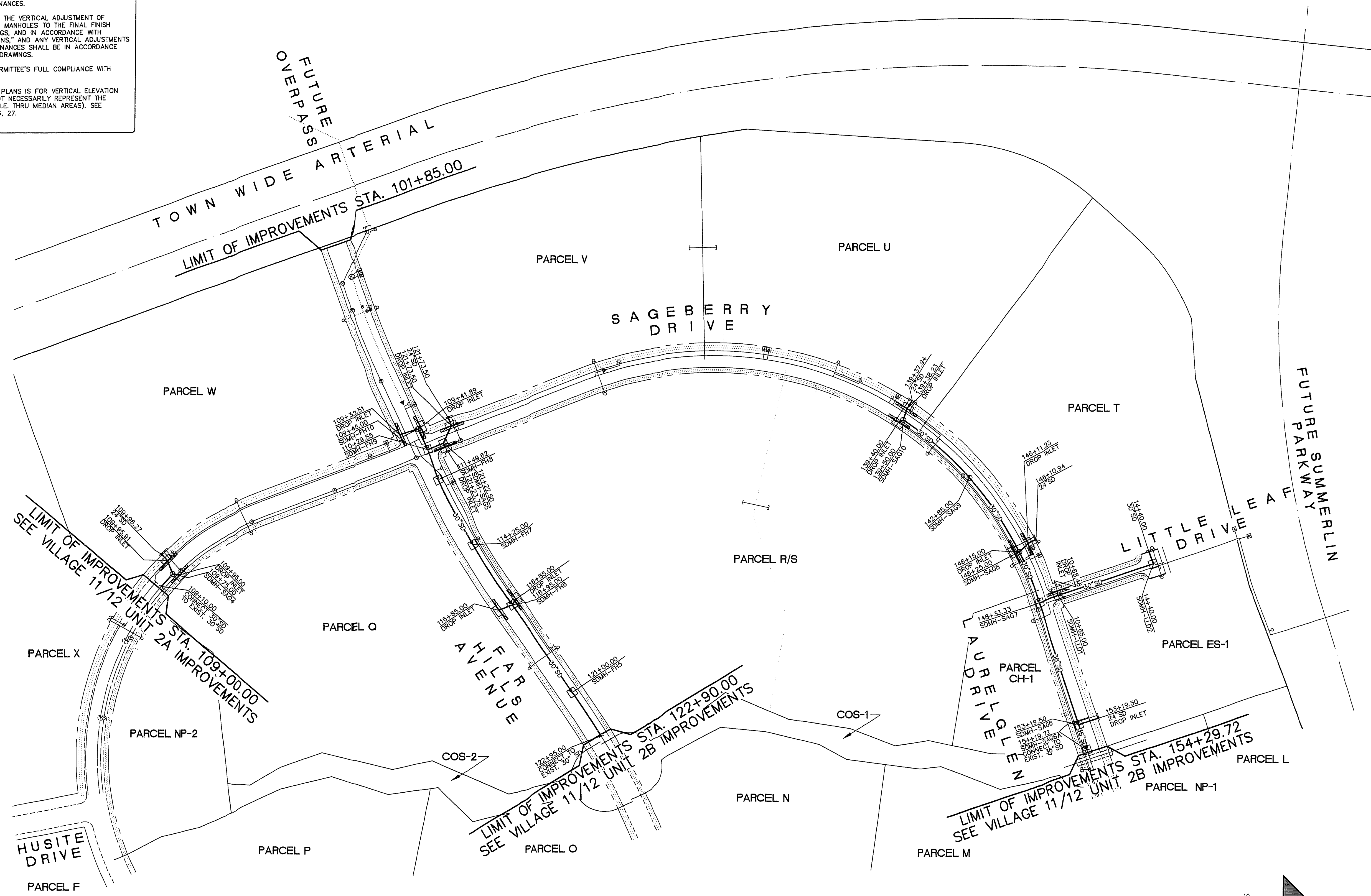
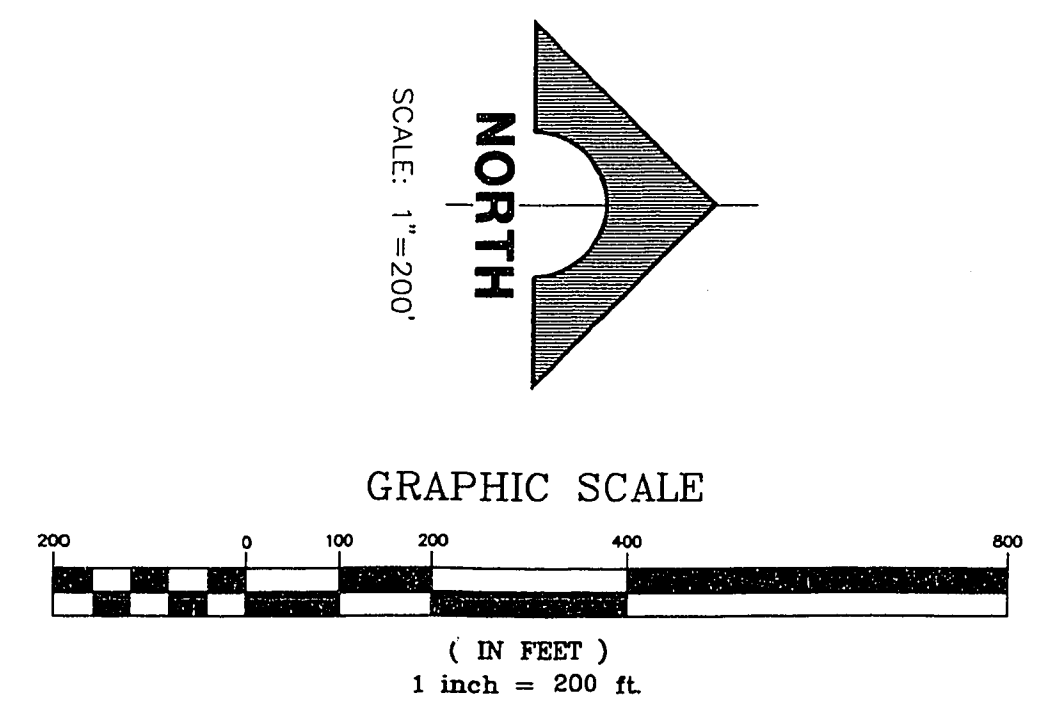


**CONSTRUCTION NOTES**

1. ALL BARRICADING AND TEMPORARY TRAFFIC CONTROL DEVICES OR METHODS USED DURING CONSTRUCTION SHALL BE IN ACCORDANCE WITH THE "NEVADA TRAFFIC CONTROL MANUAL," MOST RECENT EDITION, PUBLISHED BY THE STATE OF NEVADA, DEPARTMENT OF HIGHWAYS, EXCEPT AS OTHERWISE PROVIDED IN THE CONTRACT SPECIFICATIONS OR AS REQUIRED BY THE ENGINEER.
2. AT THE TIME OF PRE-CONSTRUCTION CONFERENCE, THE CONTRACTOR SHALL FURNISH FOR APPROVAL, A TRAFFIC BARRICADING PLAN AND METHOD OF MAINTAINING PUBLIC CONVEYANCE AND SAFETY THROUGHOUT THE CONSTRUCTION AREA. TRAFFIC BARRICADING PLANS SHALL COMPLY WITH APPLICABLE PORTIONS OF SECTIONS 824 AND 825 OF THE STANDARD SPECIFICATIONS, THE TRAFFIC CONTROL MANUAL AND APPLICABLE CITY ORDINANCES.
3. THE CONTRACTOR SHALL BE RESPONSIBLE FOR THE VERTICAL ADJUSTMENT OF EXISTING SANITARY, WATER AND STORM SEWER MANHOLES TO THE FINAL FINISH GRADES AS NOTED ON THE CONTRACT DRAWINGS, AND IN ACCORDANCE WITH SECTION 609 OF THE "STANDARD SPECIFICATIONS," AND ANY VERTICAL ADJUSTMENTS OF WATER VALVE BOXES AND OTHER APPURTENANCES SHALL BE IN ACCORDANCE WITH THE DETAILS SHOWN ON THE CONTRACT DRAWINGS.
4. NOTICE: GRADING AUTHORIZED ONLY AFTER PERMITTEE'S FULL COMPLIANCE WITH FEDERAL ENDANGERED SPECIES ACT.
5. THE DESIGN GRADE (DG) INDICATED ON THESE PLANS IS FOR VERTICAL ELEVATION DESIGN CALCULATION PURPOSES AND DOES NOT NECESSARILY REPRESENT THE FINISH IMPROVEMENT GRADES @ CENTERLINE. (I.E. THRU MEDIAN AREAS). SEE STANDARD STREET SECTIONS ON SHEET 25, 26, 27.



JOB NO. 62011.216  
 February 6, 1997 8:16:23 a.m.  
 Drawing: C:\DWG\11-12\UNIT-3A\11-3A-U.S.DWG  
 Xrefs: 11-3A-UN.DWG



	<b>FINAL SUBMITTAL</b>
<b>G.C. WALLACE, INC.</b> Engineering/Architecture 1555 SOUTH RHINBERG BLVD LAS VEGAS, NEVADA 89102	SHEET <b>5</b> SHT 5 OF 43
<b>VILLAGE 11/12 THE ARBORS-UNIT 3A-B</b> <b>MASTER UTILITY STORM DRAIN PLAN</b>	RECOMMENDED BY: ANDERSON DATE: 5/07 R.F.E. NO.: 5071 DATE: 5/07

11-31-5