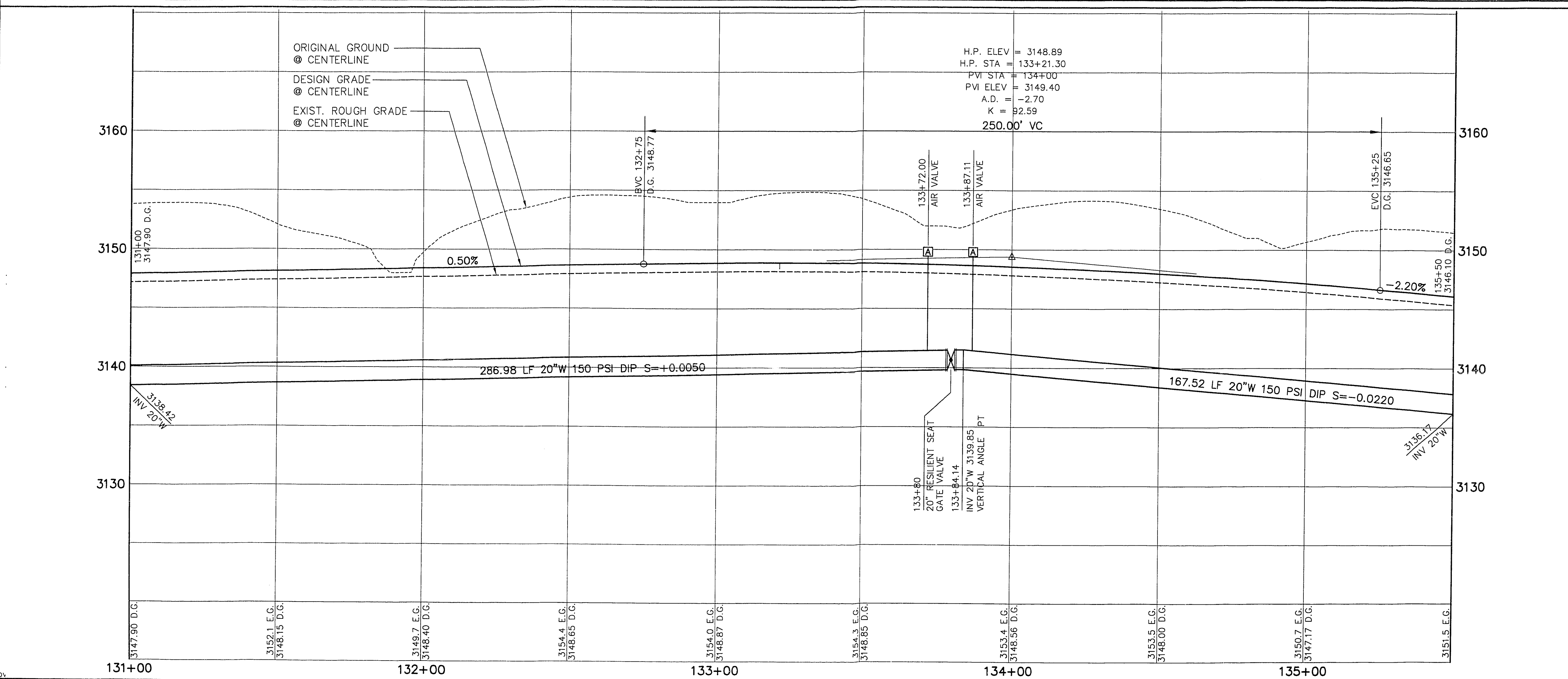
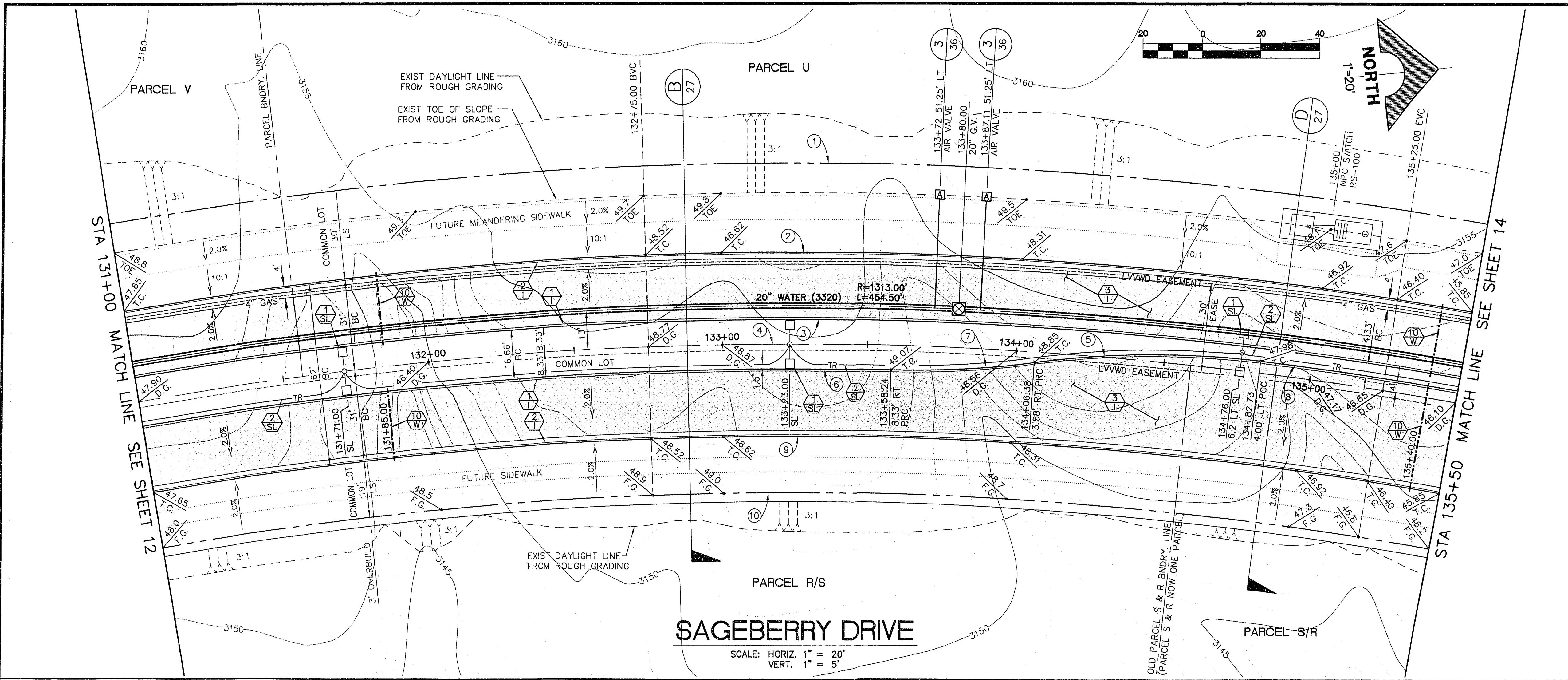


File: XR-SAGE.DWG XR-SAGT2.DWG XR-SASHD.DWG

Drawing: C:\DWG\11-12\3A\SAG-PP6.DWG

February 3, 1997 12:56:19 p.m.

JOB NO. 62011.216



CURVE DATA

CURVE	DELTA	RADIUS	LENGTH	TANGENT
1	19°49'59"	1361.00'	471.11'	237.94'
2	19°49'59"	1331.00'	460.73'	232.69'
3	19°49'59"	1308.33'	452.88'	228.73'
4	19°49'59"	1300.00'	450.00'	227.23'
5	14°41'38"	300.00'	76.94'	38.68'
6	11°22'53"	1291.67'	256.58'	128.71'
7	09°27'25"	300.00'	48.21'	24.10'
8	02°57'53"	1304.00'	67.41'	33.74'
9	19°49'59"	1269.00'	439.27'	221.85'
10	19°49'59"	1250.00'	432.69'	218.53'

CONSTRUCTION NOTES

- IMPROVEMENTS**
- 1 INSTALL "A" TYPE CURB (S-50 S)
 - 2 INSTALL "L" TYPE CURB & GUTTER (S-47 S)
 - 3 INSTALL AC PAVEMENT PER SECTION SHEETS 25, 26, & 27
 - 4 INSTALL CROSSWALK (S-78 S)
 - 5 INSTALL DEPRESSED CURB (S-75 S)

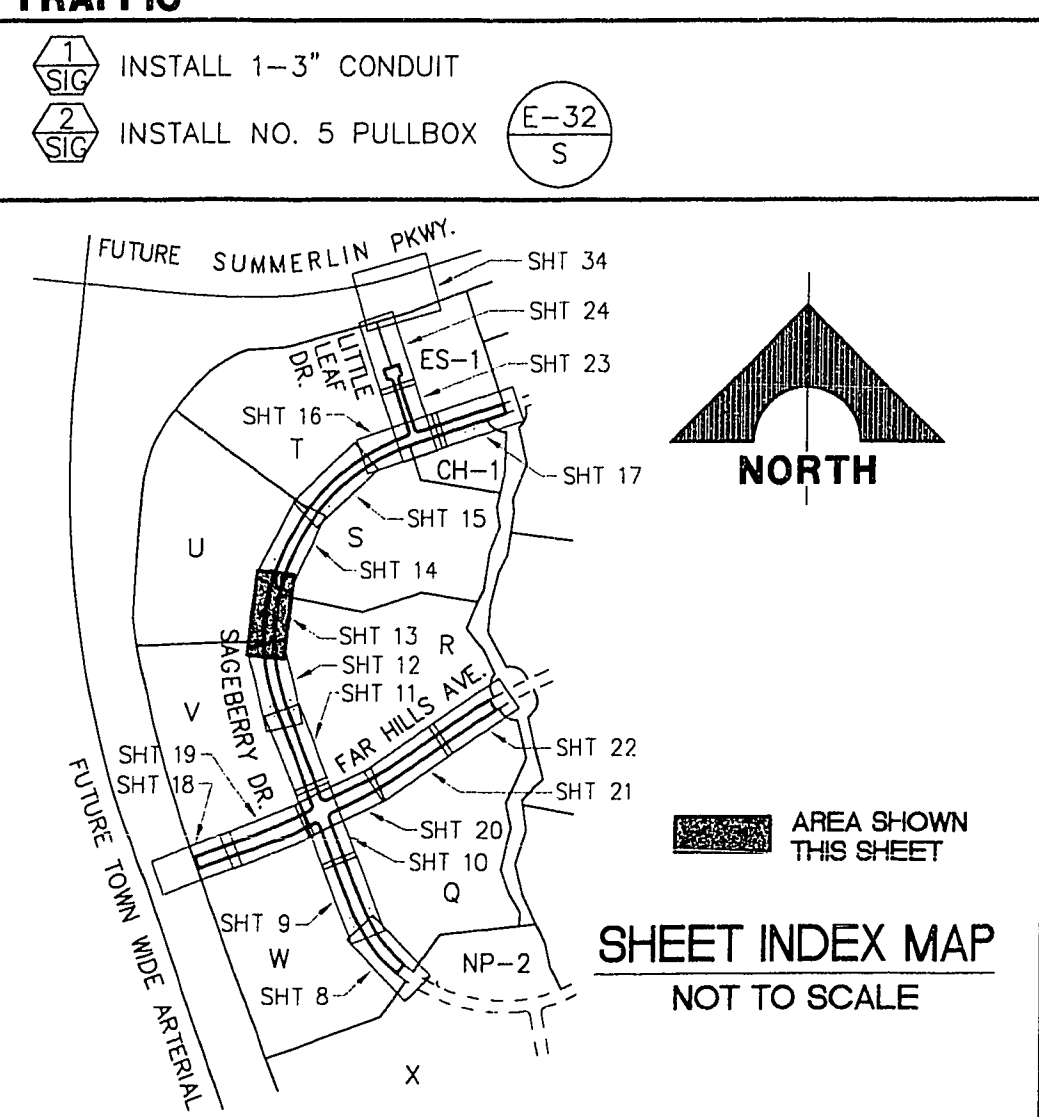
- WATER**
- 1 INSTALL WATER PIPES PER U.S.A.C.S.
 - 2 INSTALL 12" DIA. GATE VALVE & BOX
 - 3 INSTALL 12"x12"x45" ELBOW
 - 4 INSTALL 12"x12"x12" TEE
 - 5 INSTALL 12"x12"x12"x12" CROSS
 - 6 INSTALL 12"x12" ELBOW
 - 7 INSTALL 12"x12"x6" TEE
 - 8 INSTALL 12"x6" REDUCER
 - 9 INSTALL 2" BLOW-OFF & CAP (1 36)
 - 10 INSTALL FIRE HYDRANT ASSEMBLY COMPLETE
 - 11 IRRIGATION SLEEVE PER SUMMERLIN STD. U-18
 - 12 INSTALL 20" X 12" TEE
 - 13 INSTALL 1-1/2" WATER METER AND RPPA

- STORM DRAIN**
- 1 INSTALL STORM DRAIN PIPES PER SUMMERLIN STD. U-20
 - 2 INSTALL STORM DRAIN MANHOLE (D1-D10 S)
 - 3 INSTALL 4" TYPE "A" DROP INLET (D-12 S)

- SEWER**
- 1 INSTALL SEWER PIPES PER SUMMERLIN STD. U-20
 - 2 INSTALL SEWER MANHOLE (SD1-B CLV)

- STREET LIGHTING**
- 1 INSTALL STREET LIGHT, SEE ELECTRICAL PLANS (E-2 S)
 - 2 STREET LIGHT OR COMMON TRENCH, SEE ELECTRICAL PLANS

- TRAFFIC**
- 1 INSTALL 1-3" CONDUIT
 - 2 INSTALL NO. 5 PULLBOX (E-32 S)



APPROVAL: DATE: 2-11-97
LAS VEGAS VALLEY WATER DISTRICT

FINAL SUBMITTAL

RECOMMENDED BY: CHRISTOPHER W. ANDERSON
DATE: 07/11/97

REGISTERED PROFESSIONAL ENGINEER - STATE OF NEVADA
G.C. WALLACE, INC.
Engineering/Architecture
1585 SOUTH RAINBOW BLVD., LAS VEGAS, NEVADA 89102

SUMMERLIN VILLAGE 11/12 THE ARBORS-UNIT 3A-B SAGEBERRY DRIVE PLAN & PROFILE STA 131+00 TO 135+50

SHEET **13** OF 43

11-31-13