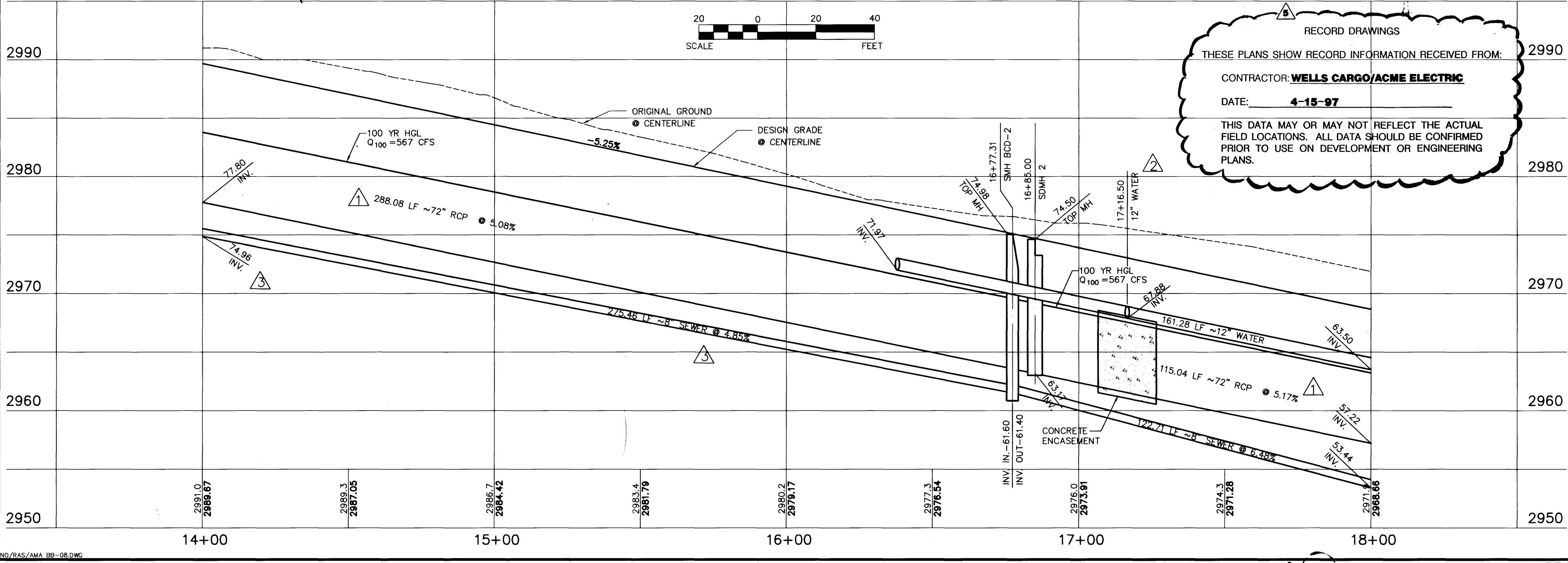
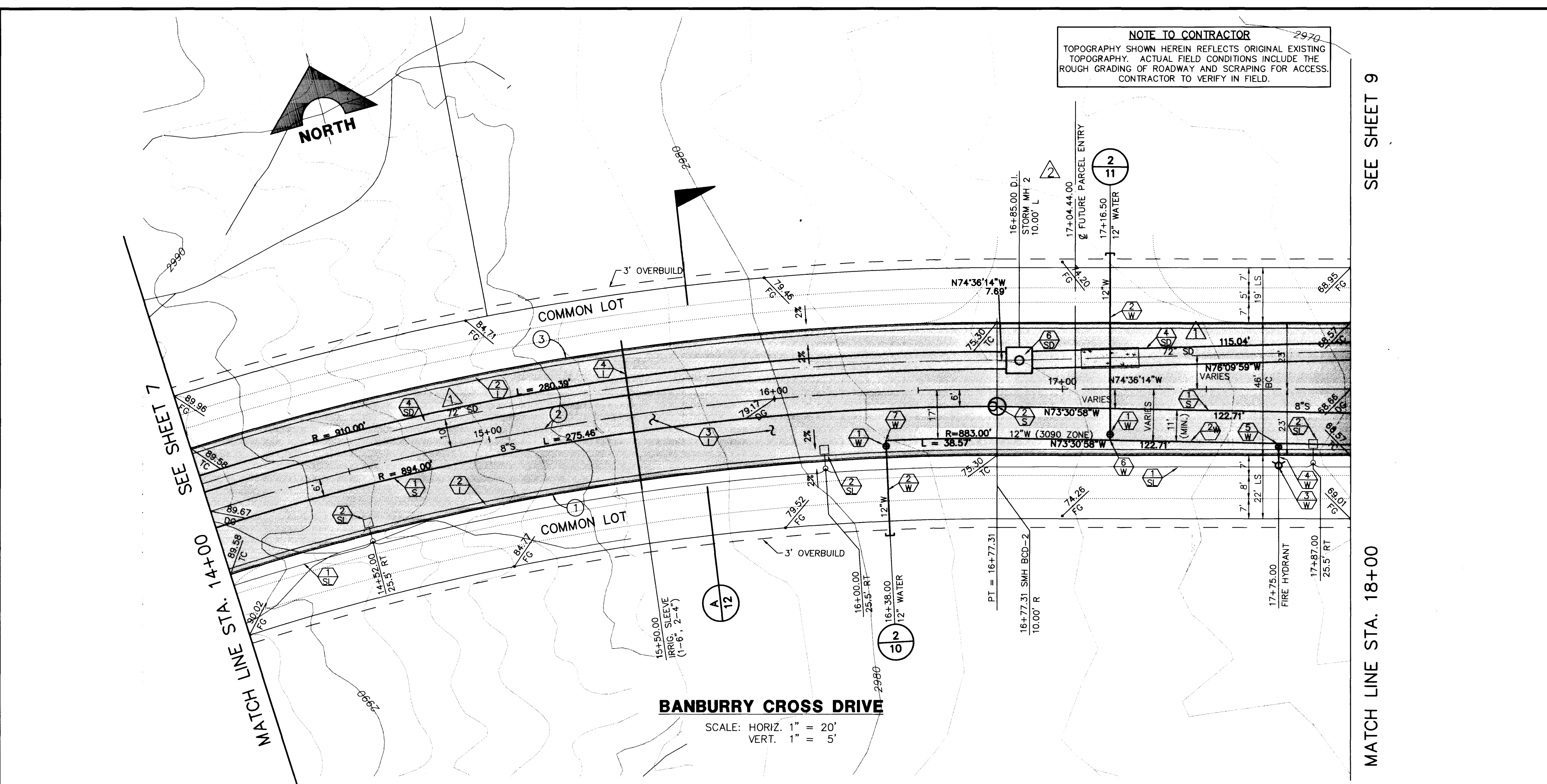


August 21, 1996 2:21:19 p.m. Drawing: C:\SUMMER\BAN\BB-08.DWG

JOB NO. 62011.211



CURVE DATA ① INDICATES CURVE NUMBER

CURVE	DELTA	RADIUS	LENGTH	TANGENT
1	20°15'06"	877.00'	309.98'	156.63'
2	20°15'06"	900.00'	318.11'	160.73'
3	20°15'06"	923.00'	326.24'	164.84'

CONSTRUCTION NOTES

- IMPROVEMENTS**
- ① INSTALL "A" TYPE ISLAND CURB. (S-50/S)
 - ② INSTALL "L" TYPE CURB & GUTTER. (S-47/S)
 - ③ INSTALL AC PAVEMENT PER STREET SECTIONS SHEET NO. 12
 - ④ INSTALL IRRIGATION SLEEVES; NUMBER & SIZE OF (U-18/S)

- SEWER**
- ① S INSTALL 8" DIA. SEWER PIPE (U-20/S)
 - ② S INSTALL SEWER MANHOLE (SD1-8/CLV)

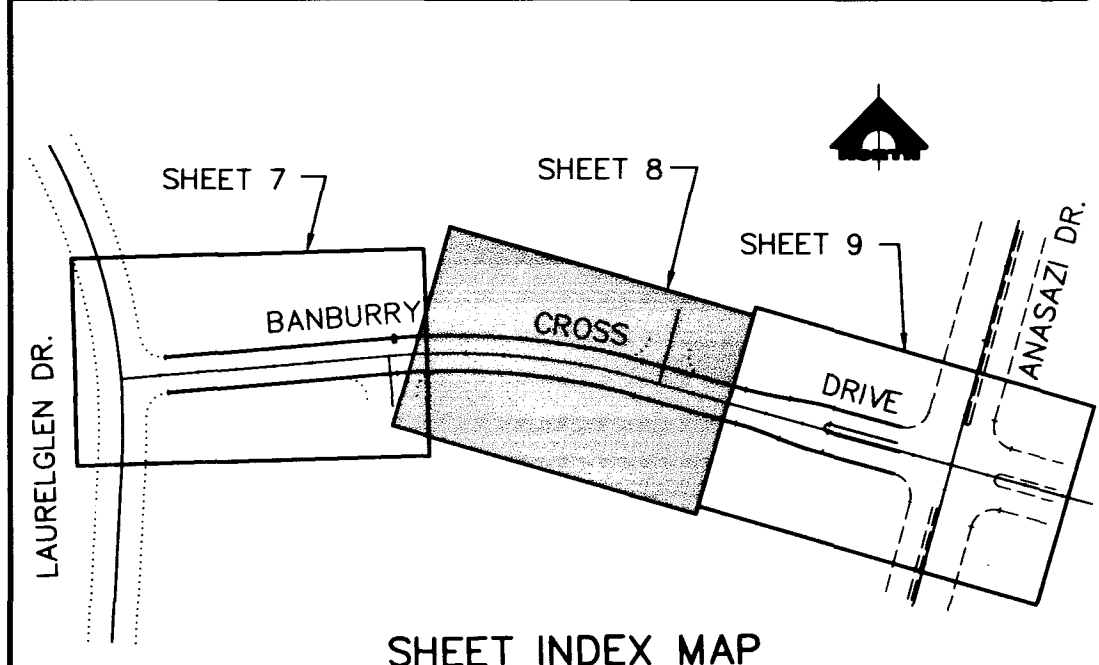
- WATER**
- ① W INSTALL 12" GATE VALVE (U-20/S)
 - ② W INSTALL 12" WATER PIPE (U-20/S)
 - ③ W INSTALL FIRE HYDRANT (U-33/S)
 - ④ W INSTALL 6" DIA. WATER PIPE (U-20/S)
 - ⑤ W INSTALL 6" GATE VALVE AT 12" X 6" TEE (U-20/S)
 - ⑥ W INSTALL 12"x12"x12" TEE
 - ⑦ W INSTALL 12"x12" ELBOW

- STORM DRAIN**
- ① SD INSTALL 24" STORM DRAIN PIPE (1350-D) (U-20/S)
 - ② SD INSTALL 36" STORM DRAIN PIPE (1350-D) (U-20/S)
 - ③ SD INSTALL 60" STORM DRAIN PIPE (1350-D) (U-20/S)
 - ④ SD INSTALL 72" STORM DRAIN PIPE (1350-D) (U-20/S)
 - ⑤ SD INSTALL MODIFIED TYPE "C" DROP INLET (3 GRATES) (2/12)
 - ⑥ SD INSTALL TYPE III STORM DRAIN MANHOLE (D-1;6/S)
 - ⑦ SD INSTALL CONCRETE JUNCTION STRUCTURE (1/12)

- STREET LIGHTING**
- ① SL STREET LIGHT OR COMMON TRENCH, SEE ELECTRICAL PLANS
 - ② SL INSTALL STREET LIGHT, SEE ELECTRICAL PLANS (E-2/S)

- TRAFFIC SIGNAL**
- ① TS INSTALL CONDUIT; NUMBER & SIZE PER PLAN
 - ② TS INSTALL NO. 5 PULL BOX

(A) CONTRACTOR TO VERIFY LOCATION OF EXISTING APPURTENANCES.
 NOTE: PIPE LENGTHS SHOWN ARE FROM CENTER TO CENTER OF MANHOLES.



APPROVAL:
 15T 11/11/96 5-01-96
 LAS VEGAS VALLEY WATER DISTRICT
 DATE: 8-28-96

FINAL SUBMITTAL

RECOMMENDED BY: ALLEN E. PAMELA, 9029 S.P.E. NO. 9029

RECORD DRAWINGS: 8/21/96 RELOCATION OF SEWER M.H. & L.A.T., 8/17/96 WATER & PARCEL ENTRY REVISION, 6/17/96 SD SIZE REVISION

DATE: 8-27-96

G. C. WALLACE, INC.
 Engineering/Architecture 1555 SOUTH RANNEY BLVD./LAS VEGAS, NEVADA 89102

SUMMERLIN BANBURY CROSS DR. IMPROVEMENTS
 BANBURY CROSS DRIVE
 PLAN & PROFILE
 STA 14+00 TO 18+00

SHEET 8 OF 13

