

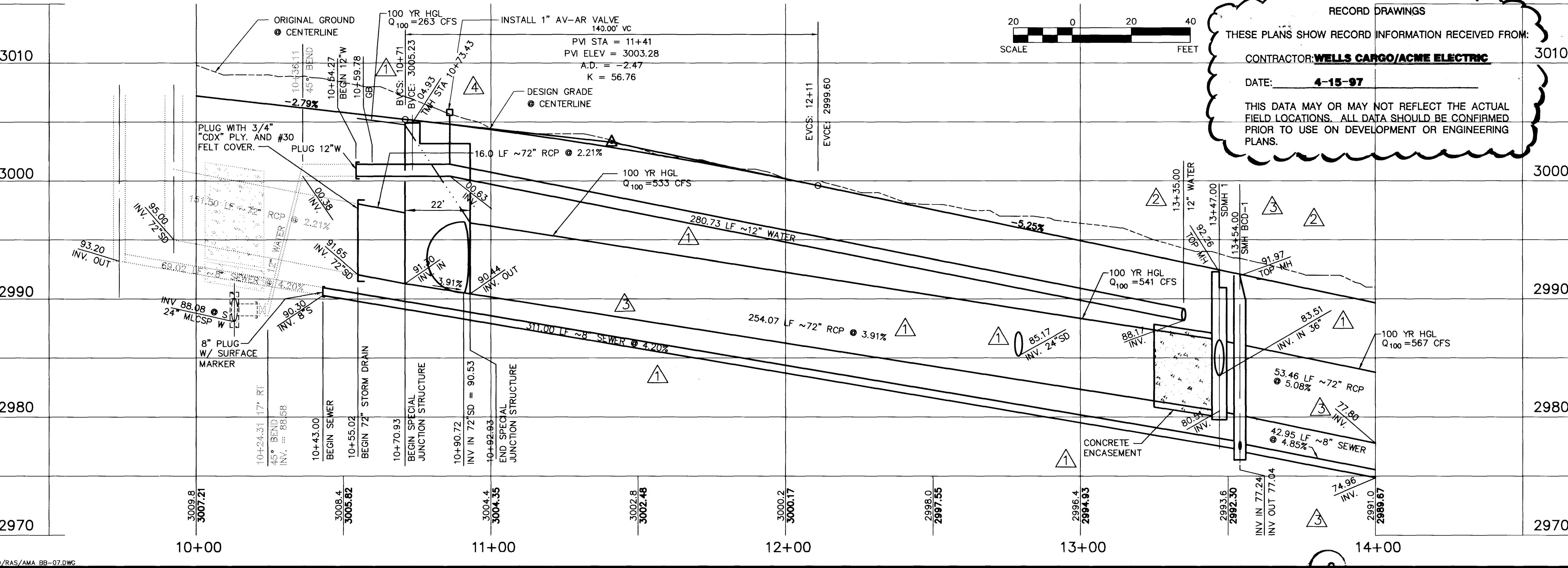
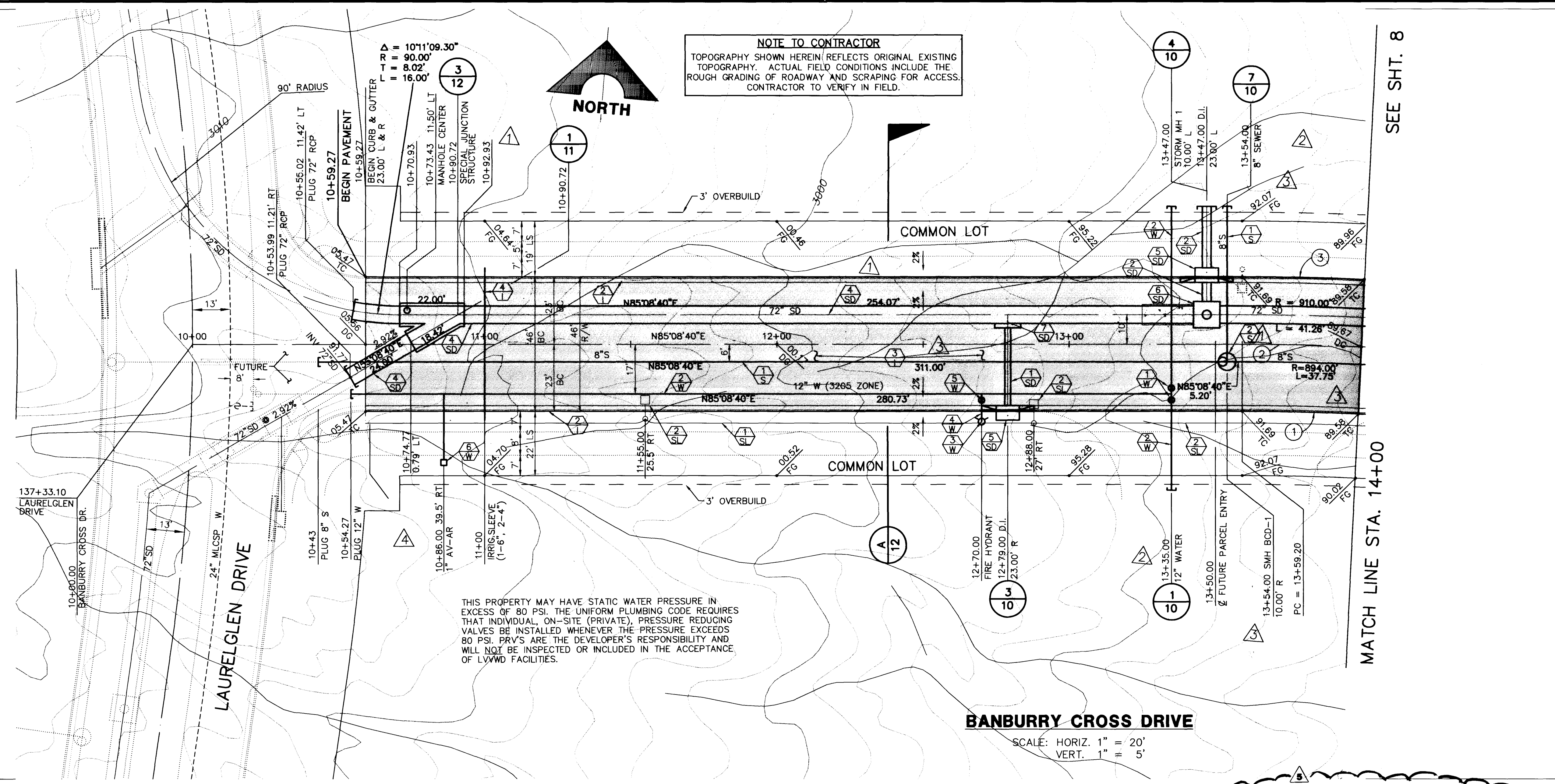
Xrefs: BAN_PRO.DWG BAN_DES.DWG

Drawing: C:\SUMMER\BAN_BB-07.DWG

August 21, 1996 2:17:51 p.m.

JOB NO. 62011211

NO/RAS/AMA BB-07.DWG



APPROVAL:
1st APR 5-01-96
LAS VEGAS VALLEY WATER DISTRICT
DATE: 8-28-96

SHEET INDEX MAP

SHEET 7 OF 13

FINAL SUBMITTAL

RECOMMENDED:
ALLEN E. PAVELKA
9029 RFE. NO.
DATE: 8-28-96

ENGINEER - STATE OF NEVADA
G. C. WALLACE, INC.
Engineering/Architecture
1955 SOUTH RAINBOW BLVD., LAS VEGAS, NEVADA 89102

SUMMERLIN BANBURY CROSS DR. IMPROVEMENTS
BANBURY CROSS DRIVE
PLAN & PROFILE
STA 10+59.27 TO 14+00

