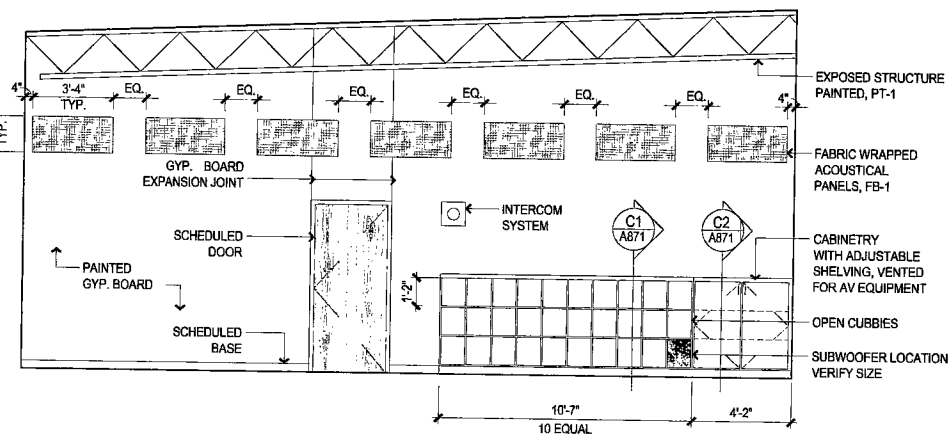
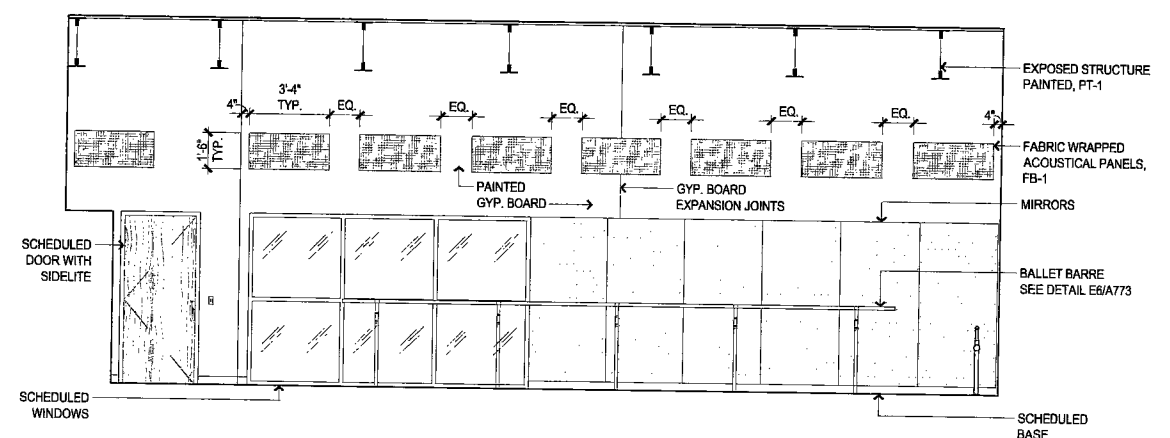


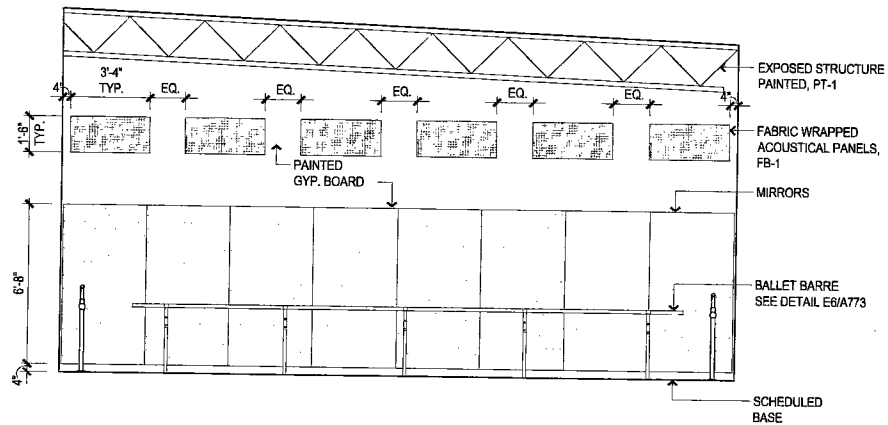
A1 INTERIOR ELEVATION
AEROBICS 213
1/4" = 1'-0"



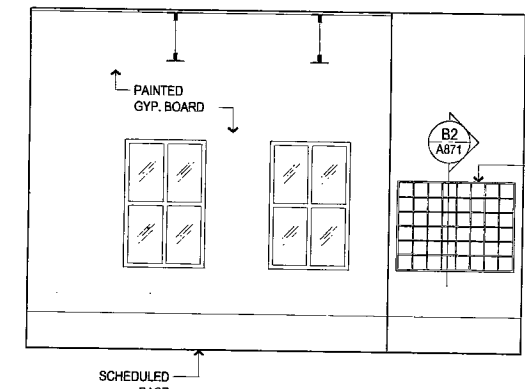
A3 INTERIOR ELEVATION
AEROBICS 213
1/4" = 1'-0"



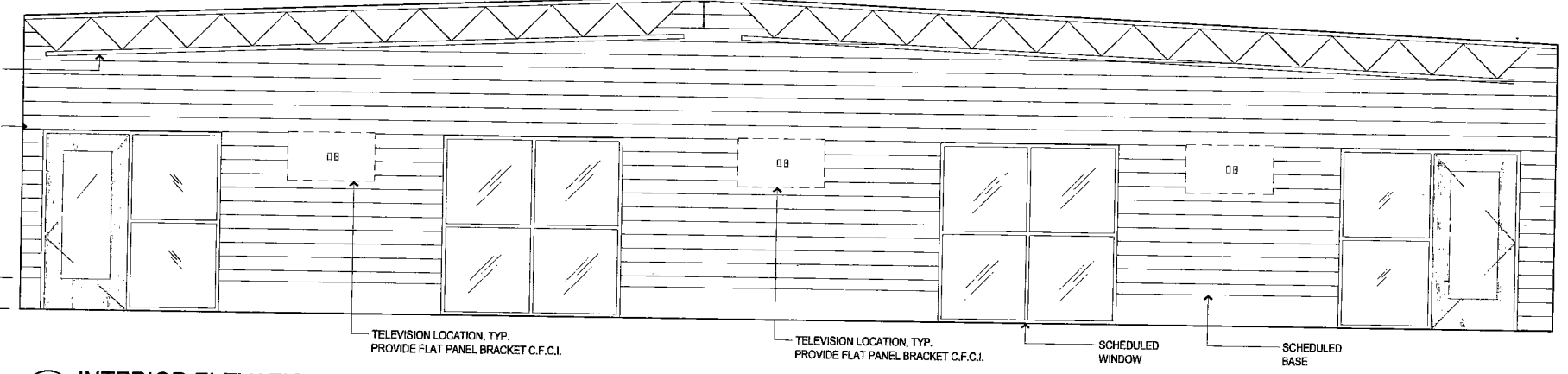
A5 INTERIOR ELEVATION
AEROBICS 213
1/4" = 1'-0"



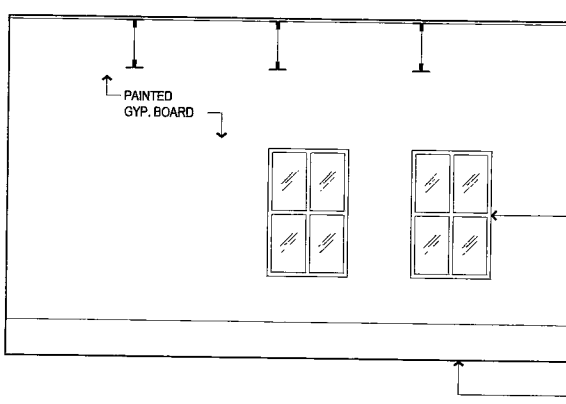
B1 INTERIOR ELEVATION
AEROBICS 213
1/4" = 1'-0"



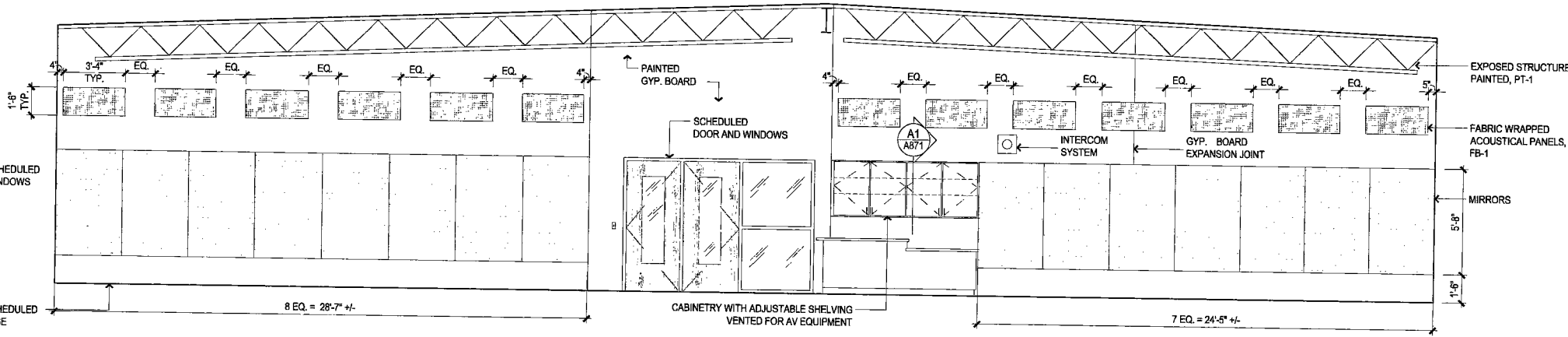
B3 INTERIOR ELEVATION
WEIGHT ROOM 214
1/4" = 1'-0"



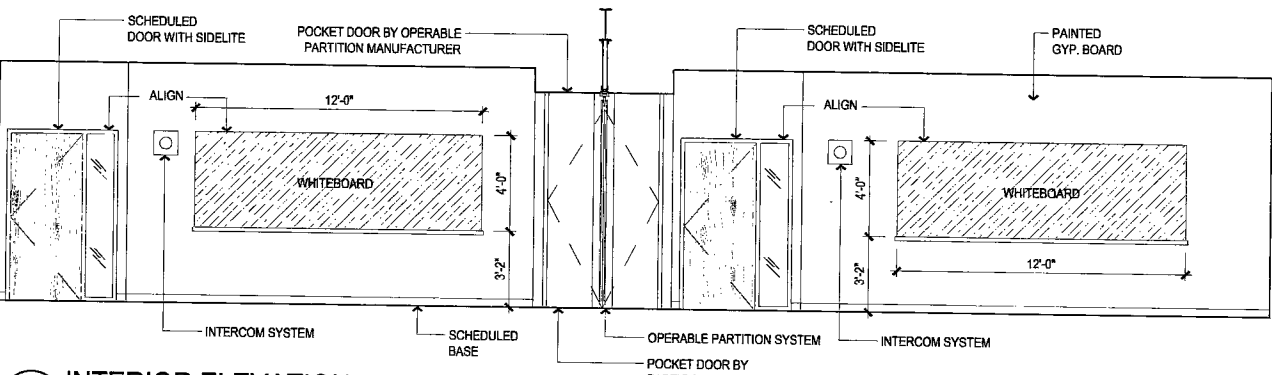
B4 INTERIOR ELEVATION
WEIGHT ROOM 214
1/4" = 1'-0"



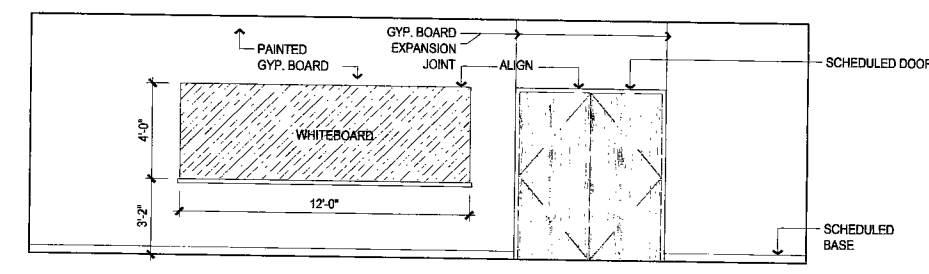
C1 INTERIOR ELEVATION
WEIGHT ROOM 214
1/4" = 1'-0"



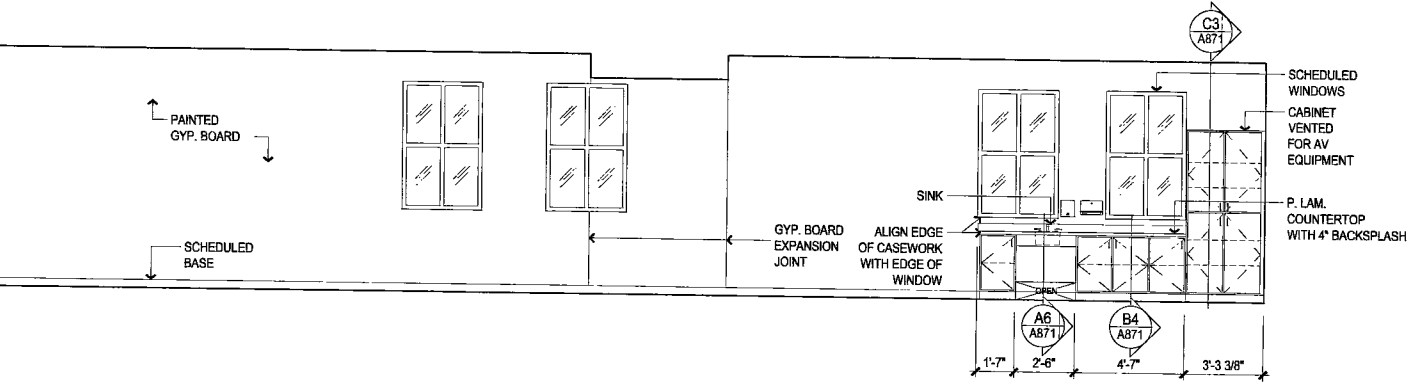
C2 INTERIOR ELEVATION
WEIGHT ROOM 214
1/4" = 1'-0"



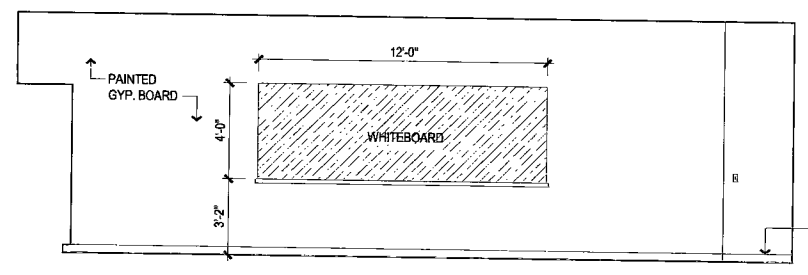
D1 INTERIOR ELEVATION
CLASSROOM 221 AND 222
1/4" = 1'-0"



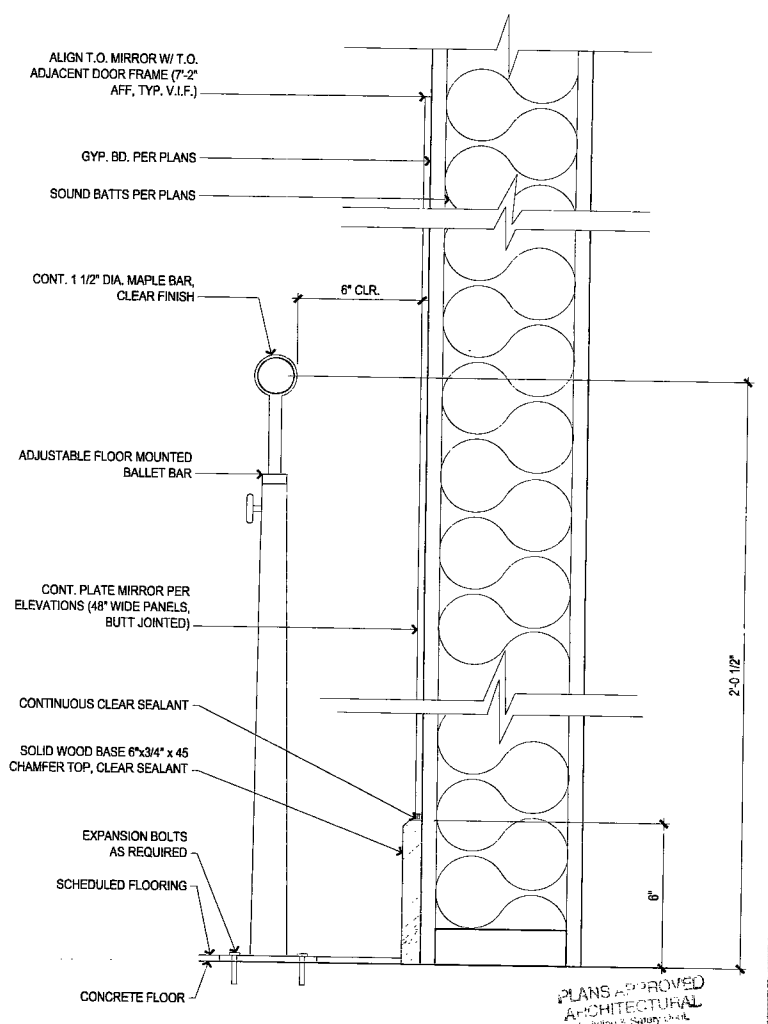
D4 INTERIOR ELEVATION
CLASSROOM 222
1/4" = 1'-0"



E1 INTERIOR ELEVATION
CLASSROOM 221 AND 222
1/4" = 1'-0"



E4 INTERIOR ELEVATION
CLASSROOM 221
1/4" = 1'-0"



E6 DETAIL (AEROBICS 213)
BALLET BARRE
9.3.07
JAN 09 2000

119822

architecture
interiors
planning
engineering

Dekker Perich Sabatini

6950 Bermuda Road,
Suite 100
Las Vegas, Nevada 89119
702.438.1006
fax 438.1050
info@dpdesign.org

STUPAK COMMUNITY CENTER
250 WEST BOSTON AVENUE
LAS VEGAS, NEVADA 89102
INTERIOR ELEVATIONS

FOR THE CITY OF LAS VEGAS
No. 3534
ARCHITECT
STATE OF NEVADA

9.3.07
OWNER: CITY OF LAS VEGAS
DEPARTMENT OF PUBLIC WORKS
ARCHITECTURAL SERVICES

400 EAST STEWART AVENUE
LAS VEGAS, NEVADA 89102
PHONE: (702) 239-6235
FAX: (702) 388-8866
TDD: (702) 388-9108

DATE: 08.03.07
SCALE:
SHEET NO: 06.15341.25
CITY SHEET NO: 650.39-2

119822

A773