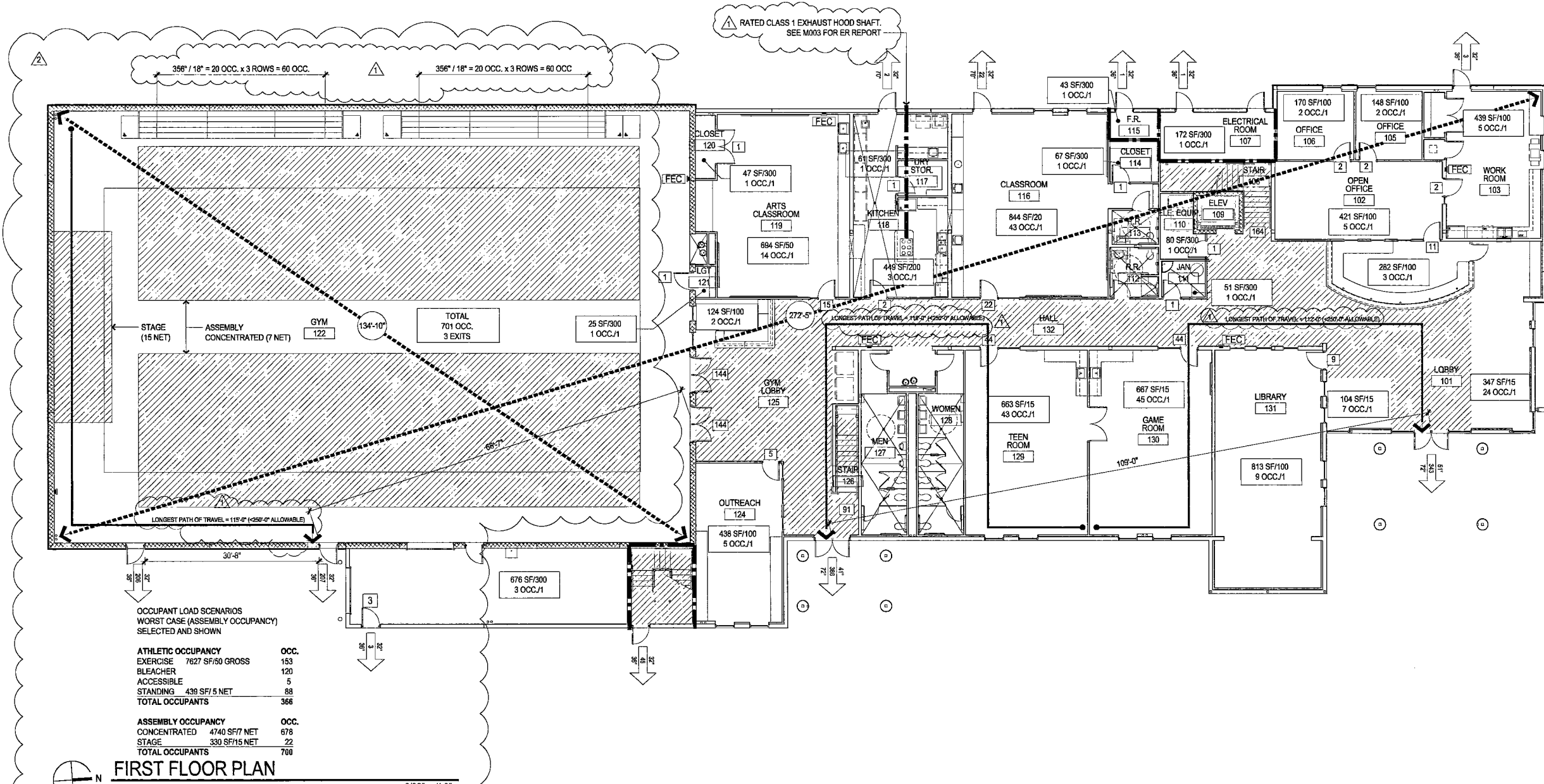


SECOND FLOOR PLAN
3/32" = 1'-0"



FIRST FLOOR PLAN
3/32" = 1'-0"

OCCUPANT LOAD SCENARIOS
WORST CASE (ASSEMBLY OCCUPANCY)
SELECTED AND SHOWN

ATHLETIC OCCUPANCY	OCC.
EXERCISE 727 SF/50 GROSS	153
BLEACHER	120
ACCESSIBLE	5
STANDING 439 SF/5 NET	88
TOTAL OCCUPANTS	366
ASSEMBLY OCCUPANCY	OCC.
CONCENTRATED 4740 SF/7 NET	678
STAGE 330 SF/5 NET	22
TOTAL OCCUPANTS	700

RECEIVED
JAN 14 2008
CITY OF LAS VEGAS
PERMITS

GOVERNING AGENCIES

GOVERNING AGENCIES:
CODE AUTHORITY: CITY OF LAS VEGAS, BLDG. DEPT.
FIRE AGENCY: CITY OF LAS VEGAS, FIRE DEPT.
APPLICABLE CODES: AS AMENDED BY CITY OF LAS VEGAS
BUILDING CODE: 2006 IBC
ELECTRICAL CODE: 2005 NEC
MECHANICAL CODE: 2008 IMC
PLUMBING CODE: 2008 UPC
ACCESSIBILITY: 2003 ICC/ANSI
ENERGY: 2006 IECC

ZONING INFORMATION

PARCEL NUMBERS: APN: 162-04-813-109 (C-V)
SETBACK RESTRICTIONS ARE DETERMINED FROM CITY OF LAS VEGAS ZONING CODE, CHAPTER 16.06.020.
SETBACKS:
FRONT SETBACK: 5'-0"
SIDE YARD SETBACK: 2'-4"
REAR YARD SETBACK: 6'-0"
MAXIMUM HEIGHT: 40'-0"
SITE AREA: ±1.13 ACRES (GROSS)
LANDSCAPE AREA: ±49,398 SF
LANDSCAPE RATIO: 12.8% OF SITE
PARKING DATA:
26 STANDARD
14 COMPACT
2 ACCESSIBLE
42 TOTAL SPACES

CODE ANALYSIS

TYPE OF CONSTRUCTION: I-B
YES
AUTOMATIC SPRINKLER SYSTEM: A-1 (MEETING ROOM, RECREATION)
OCCUPANCY CLASSIFICATION: B (OFFICE, EDU. ABOVE 12TH)
A-4 (ATHLETIC VIEWING)
1224
NUMBER OF OCCUPANTS: NONE REQUIRED
AREA SEPARATIONS: NONE REQUIRED
ALLOWABLE BUILDING HEIGHT: A-3: 40'-0" (2 STORIES)
B: 80'-0" (4 STORIES)
ACTUAL BUILDING HEIGHT: A-4: 40'-0" (2 STORIES)
2 STORY (28'-0")
BASE ALLOWABLE AREA PER FLOOR: A-3: 9,500 SF
A-4: 9,500 SF
B: 23,000 SF
A-4: 9,500 SF
MAX. ALLOWABLE AREA PER FLOOR: 20,908 SF
ACTUAL AREA FIRST FLOOR: 10,875 SF
ACTUAL AREA SECOND FLOOR: 2,248 SF
ACTUAL AREA OPTIONAL TRUCK: 2,248 SF
TOTAL AREA: 34,183 SF

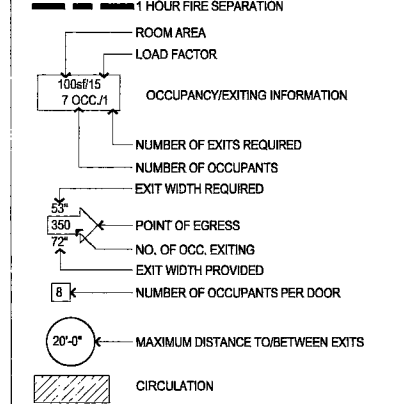
CALCULATIONS 508.3.2

A₀ = ALLOWABLE AREA PER FLOOR (S.F.)
A₁ = TABULAR AREA PER FLOOR IN ACCORDANCE WITH TABLE 503 (S.F.)
I = AREA INCREASE DO TO FRONTAGE (PERCENT) AS CALCULATED IN ACCORDANCE WITH SECTION 506.2
F = BUILDING PERIMETER WHICH FRONTS ON A PUBLIC WAY OR OPEN SPACE HAVING 30 FEET OPEN WIDTH
P = PERIMETER OF ENTIRE BUILDING
W = WIDTH OF PUBLIC WAY OR OPEN SPACE
FRONTAGE INCREASE:
P=735, F=451, W=20
I = [(F-P) ÷ W] × 100
I = [(671) ÷ (27)]
I = 40.9%
AREA MODIFICATION:
A₀ = A₁ + [(I) × (A₁)]
A₀ = 9,500 + [(40.9%) × (9,500)]
A₀ = 9,500 + 3,895 = 13,395
A₀ = 32,385 SF PER FLOOR
PLUMBING CALCULATIONS:
WATER CLOSETS: MEN WOMEN MEN WOMEN
LAVS: MEN WOMEN
FOUNTAINS: MEN WOMEN
A3 OCC 840
B OCC 384
A4 (AS WORST CASE)
TOTAL OCC. 1,224 REQ'D 9 12 7 7 6
PROV. 14 14 9 9 8

FIRE RESISTIVE RQMTS.

STRUCTURAL FRAME: 0 HRS
INTERIOR BEARING WALLS: 0 HRS
EXTERIOR BEARING WALLS: 0 HRS
INTERIOR NON-BEARING WALLS: 0 HRS
EXTERIOR NON-BEARING WALLS: 0 HRS
FLOOR CONSTRUCTION: 0 HRS
ROOF CONSTRUCTION: 0 HRS
EXTERIOR WALLS <10': 1 HR
EXTERIOR WALLS >10': 0 HRS
SHAFT CONSTRUCTION: 1 HR
STAIR CONSTRUCTION: N/A
EXIT ENCLOSURE: 1 HR

LEGEND OF SYMBOLS



IECC SYNOPSIS

CEILING INSULATION: R-38
WALL INSULATION: R-13
FIXED WINDOW & FRAME "U" VALUE: .56
SHADING COEFFICIENT OF FIXED WINDOW: .45
GLASS DOOR & FRAME "U" VALUE: .56
SHADING COEFFICIENT OF GLASS DOOR: .45

PLANS APPROVED
ARCHITECTURAL
JAN 17 2008

REVISED: 11.02.07 BLDG. DEPT. REVIEW #1
12.21.07 BLDG. DEPT. REVIEW #2
01.11.08 BLDG. DEPT. REVIEW #3

architecture
interiors
planning
engineering

Dekker Perich Sabatini

6850 Bermuda Road,
Suite 100
Las Vegas, Nevada 89119
702.436.1006
fax 436.1050
info@dpdesign.org

STUPAK COMMUNITY CENTER
251 WEST BOSTON AVENUE
LAS VEGAS, NEVADA 89102
CODE PLAN

OWNER: CITY OF LAS VEGAS
DEPARTMENT OF PUBLIC WORKS
ARCHITECTURAL SERVICES

400 EAST STEWART AVENUE
LAS VEGAS, NEVADA 89103
PHONE: (702) 226-6535
FAX: (702) 384-6844
TDD: (702) 384-9308

DATE: 01.11.08
SCALE:
REV NO: 06.15341.25
REV DESC: 650.39-2

SHEET NO: **G102**