

GRAPHIC SCALE
 (IN FEET)
 1 inch = 20 ft.

FIRE FLOW CALCULATIONS:
 Fire Flow Requirement is 1,875 gallons per minute at 20 psi residual pressure.

Based on:
 Square Footage: 34,183 square feet
 Largest area between 4-Hour area separation walls: N/A square feet
 Building height: 38 feet
 Number of Stories: TWO (2) floors
 Type of Construction: I-B
 Occupancy: A3, A4 & B
 Full Automatic Fire Sprinkler System: Yes No
 Reviewed By: [Signature] Date: 12/14/17

EX. (1)-2" METER (ACCT #595772, MTR #0283696) ABANDONMENT OF EXISTING SERVICES 2" AND SMALLER

THE CONTRACTOR SHALL NOTIFY THE INSPECTION DIVISION AT THE LVWD (702-285-3227) 48 HOURS PRIOR TO THE REQUESTED REMOVAL TIME TO ALLOW THE DISTRICT TO TAKE THE FINAL METER READING. AFTER THE FINAL READING THE CONTRACTOR MAY THEN BEGIN REMOVAL PROCEDURES FOR THE AFFECTED SERVICE AS FOLLOWS:

EXISTING SERVICE LATERALS THAT ARE TO BE ABANDONED FROM THE EXISTING WATER MAINS SHALL HAVE THE CORPORATION STOPS TURNED OFF AT THE MAIN, A MINIMUM OF TWELVE (12) INCHES OF THE LATERAL CUT OUT NEAR THE CORPORATION STOPS, AND A BRASS CAP INSTALLED ON THE CORPORATION STOP. IF THE CORPORATION STOP IS DAMAGED BEYOND REPAIR OR PULLED FROM THE EXISTING WATER MAIN, THE MAIN SHALL BE REPAIRED AT THE CONTRACTOR'S EXPENSE, IN A MANNER APPROVED BY THE DISTRICT. IF THE CORPORATION STOP IS NOT WATER TIGHT, THE CONTRACTOR SHALL NOTIFY LVWD COMMUNICATION SUPPORT CENTER (702-285-7177) FOR FURTHER DIRECTION. THE EXISTING METER(S) SHALL BE REMOVED AND DELIVERED TO THE DISTRICT.

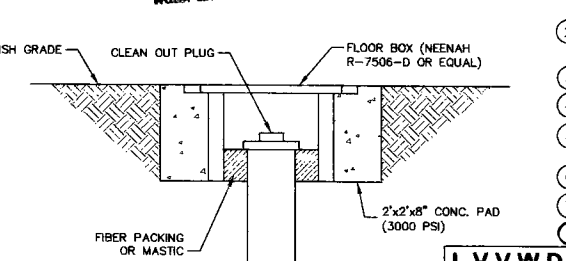
THE CONTRACTOR SHALL REMOVE THE EXISTING SERVICE METER BOX AND APURTENANCES, FILL AND GRADE ANY AND ALL RESULTING HOLES, AND RE-PAVE OR RESTORE TO ORIGINAL CONDITIONS OR BETTER, ALL LANDSCAPING, IRRIGATION SYSTEMS, CONCRETE, SIDEWALKS, ASPHALT, OR ANY OTHER ITEMS DAMAGED OR REMOVED DURING THE REMOVAL OF THE EXISTING SERVICE METER BOX.

REDUCED PRESSURE PRINCIPLE ASSEMBLY (1)-1" AND (2)-2"

APPROVED REDUCED PRESSURE PRINCIPLE ASSEMBLY(S) SHALL BE INSTALLED PER THE U.D.A.C.S. PLATE NO. 11A. NO WATER SHALL BE TAKEN FROM A SERVICE REQUIRING BACK FLOW PREVENTION UNTIL THE REDUCED PRESSURE PRINCIPLE ASSEMBLY HAS BEEN SUCCESSFULLY TESTED BY THE LVWD. ANY BLOCK WALL OR OTHER FENCE MATERIAL SHALL BE DESIGNED AND CONSTRUCTED AROUND THE OUTSIDE OF THE EASEMENTS TO ALLOW THE DISTRICT DIRECT ACCESS FROM THE ADJACENT RIGHT-OF-WAY. EASEMENT SHALL BE CLEARLY MARKED OR STAKED PRIOR TO START OF CONSTRUCTION.

NOTE:
 UTILITY APURTENANCES SHALL CONFORM TO THE REQUIREMENTS OF TITLE 12.12.040 AND THE DOWNTOWN CENTRAL PLAN & CONDITION OF APPROVAL. PER DOWNTOWN CENTRAL PLAN & CONDITION OF APPROVAL:
 - INSTALL PIPELINE MARKER BALLS IN TRENCH AMONG HORIZONTAL ELBOW FITTINGS, PER U.D.A.C.S. PLATE #27.
 - DISPOSAL OF ASBESTOS CEMENT PIPE SHALL BE IN ACCORDANCE WITH ANNA, LOCAL, STATE AND FEDERAL REGULATIONS.
 - ALL SEWER/STORM DRAINS CROSSING WATER LINES MUST CONFORM TO SECTION 2.19 OF THE U.D.A.C.S. FOR WATER AND STORM MAIN CROSSINGS AND CLEARANCES.

Approval is for domestic water and sewer only.



- WATER NOTES:**
- INSTALL 10" DOUBLE CHECK DETECTOR ASSEMBLY PER U.D.A.C.S. DWG NO. 11C.
 - INSTALL 10"x8" M.J. TAPPING SLEEVE WITH 6" TAPPING VALVE PER U.D.A.C.S. PLATE NO. 22.
 - INSTALL 2" 90 DEGREE BEND.
 - INSTALL 6" 90 DEGREE BEND PER U.D.A.C.S. PLATE NO. 5.
 - INSTALL 8", 90 DEGREE BEND PER U.D.A.C.S. PLATE NO. 5.
 - INSTALL ABOVE GROUND FIRE DEPT. CONNECTION.
 - INSTALL 6"x2" SERVICE SADDLE PER U.D.A.C.S. DWG PLATE NO. 10.
 - INSTALL 2" METER PER U.D.A.C.S. PLATE NO. 10.
 - INSTALL 2" RPPA PER U.D.A.C.S. PLATE NO. 11A.
 - INSTALL 2" TEE.
 - INSTALL 1" IRRIGATION METER PER U.D.A.C.S. PLATE NO. 10.
 - INSTALL 1" RPPA PER U.D.A.C.S. PLATE NO. 11A.
 - INSTALL 6"x1" SERVICE SADDLE PER U.D.A.C.S. DWG PLATE NO. 10.
 - COORDINATE WITH MECHANICAL/PLUMBING AND FIRE SPRINKLER CONTRACTOR PLANS FOR BUILDING CONNECTION.
 - REMOVE EXISTING BACKFLOW DEVICE AND METER.
 - INSTALL 8"x10" REDUCER PER U.D.A.C.S. PLATE NO. 3.
 - INSTALL POST INDICATOR VALVE W/ TAMPER MINIMUM 5 FT. FROM THE BUILDING, POWER & TELEPHONE REQUIRED AT P.I.V.
 - INSTALL 10"x8" M.J. TAPPING SLEEVE WITH 6" TAPPING VALVE PER U.D.A.C.S. PLATE NO. 22.
 - INSTALL CAP & BLOW-OFF ASSEMBLY PER U.D.A.C.S. PLATE NO. 4A.
 - INSTALL 8" CHECK VALVE.

- SEWER NOTES:**
- INSTALL 4" TRENCH TREST 500 GALLON GREASE INTERCEPTOR MODEL #PS500E-C OR APPROVED EQUAL. SEE PLUMBING PLANS.
 - INSTALL CLEANOUT PER PLAN, WITH NEENAH H-20TRAFFIC LOAD RATED COVERS OR APPROVED EQUAL. SEE DETAIL ON SHEET C3.05.
 - INSTALL 6" WYE.
 - INSTALL 4" WYE.
 - EX. SEWER LINE TO BE ENCASED AT CROSSING PER U.D.A.C.S. SECTION 2.19.02 B.
 - INSTALL 2-WAY CLEANOUT, WITH NEENAH H-20TRAFFIC LOAD RATED COVERS OR APPROVED EQUAL.
 - TRANSFORMER LOCATION.
 - 6" SEWER LINE TO BE ENCASED AT CROSSING PER U.D.A.C.S. SECTION 2.19.02 B.

L.V.W.D. APPROVAL
 [Signature]
 LVWD PROJECT #114068

BENCHMARK:
 CITY OF LAS VEGAS BENCHMARK STATION - OL11 454
 RIVET AND ALUMINUM PLATE IN THE TOP OF CURB AT THE NORTH CORNER OF SAHARA AVENUE AND TAM ROAD.
 ELEVATION = 625.4601 METERS (NAV80 '88)
 ELEVATION = 2052.03 US SURVEY FEET (NAV80 '88)

BASIS OF BEARINGS:
 SOUTH 86°13'31" EAST BEING THE BEARING OF THE CENTERLINE OF BOSTON AVENUE AS SHOWN ON THAT CERTAIN MAP ON FILE IN THE CLARK COUNTY RECORDER'S OFFICE IN FILE 135, PAGE 66 OF SURVEYS.

650.39-3

Call before you dig
 1-702-455-7511
 1-702-455-7540

Call before you dig
 OVERHEAD Dig
 1-702-432-5300
 1-702-227-2929
 1-800-227-2800

STUPAK COMMUNITY CENTER
 251 WEST BOSTON AVENUE
 CITY OF LAS VEGAS
 UTILITY PLAN

Nevada By Design
 ENGINEERING CONSULTANTS
 1775 E. FLORISSANT AVE., SUITE 100
 LAS VEGAS, NV 89119
 WWW.NVBYDESIGN.COM

APPROVAL
 [Signatures and stamps]

OWNER: CITY OF LAS VEGAS
 DEPARTMENT OF PUBLIC WORKS
 ARCHITECTURAL SERVICES

400 EAST STEWART AVENUE
 LAS VEGAS, NEVADA 89101
 PROJECT NO. 650.39-3
 DATE: 06.15.31.25

C3.00
 SHEET 5 OF 10