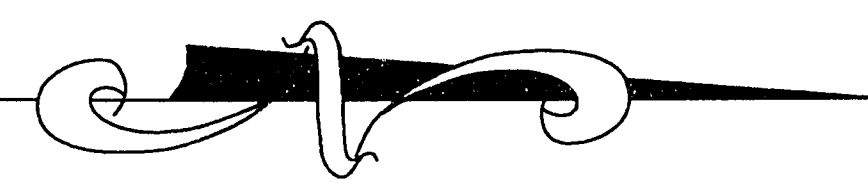


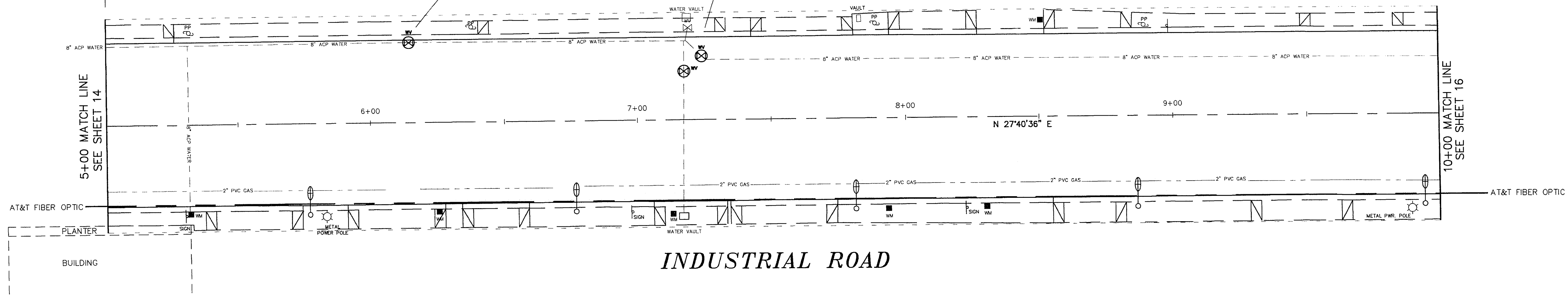
SCALE: 1"=20'



5+00.00
CONTINUE ROTOMILL 1" BELOW
LIP OF GUTTER AT EAST AND WEST
LIP OF GUTTER AND TRANSITION TO
1/2" ROTOMILL AT 12' FROM
LIP OF GUTTER. OVERLAY ROAD
WITH 1-1/2" RUBBERIZED ASPHALT
PAVEMENT. FROM STA. 1+10.59
TO 35+17.27.

6+15.00
ADJUST VALVE BOX ELEVATION
CONST. VALVE BOX COLLAR

7+20.00
ADJUST 2 VALVE BOX ELEVATIONS
CONST. 2 VALVE BOX COLLARS



INDUSTRIAL ROAD

CALL
BEFORE YOU
DIG.
1-800-227-2600
UNDERGROUND SERVICE USA

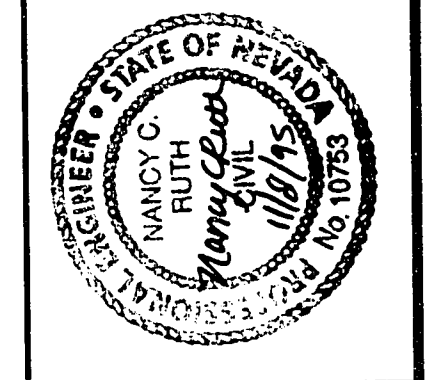
NOTE:
SEE SHEET 37 FOR QUANTITY
INFORMATION.
SEE SHEET 37 FOR DETAIL
INFORMATION.

CAUTION:
EXISTING UTILITIES ARE LOCATED ON
THE PLANS FROM A SEARCH OF
AVAILABLE RECORDS. CONTRACTOR TO
VERIFY LOCATIONS AND DEPTHS PRIOR
TO CONSTRUCTION.

BENCH MARK:
CLARK COUNTY BM# 6C114S4,
RIVET AND PLATE IN THE TOP OF CURB AT
THE SOUTHEAST RETURN OF INDUSTRIAL RD.
AND NORTH BRIDGE LANE, ELEV. 2052.58'

REVISIONS	
NO.	DESCRIPTION

STREET REHABILITATION DESIGN	
DESIGNED BY:	STREET REH.:
CHECKED BY:	DATE:
DESIGNED BY:	DRAWING NO.:
STREET REH.:	BID. NO.:



Department of Public Works
INDUSTRIAL ROAD PLAN
STATION 5+00 TO 10+00



DRAWING No.	15
107-V2157	37