

Avoid cutting underground utility lines. It's costly.

**Call before you Dig.**

1-800-227-2600

UNDERGROUND SERVICE ALERT (USA)

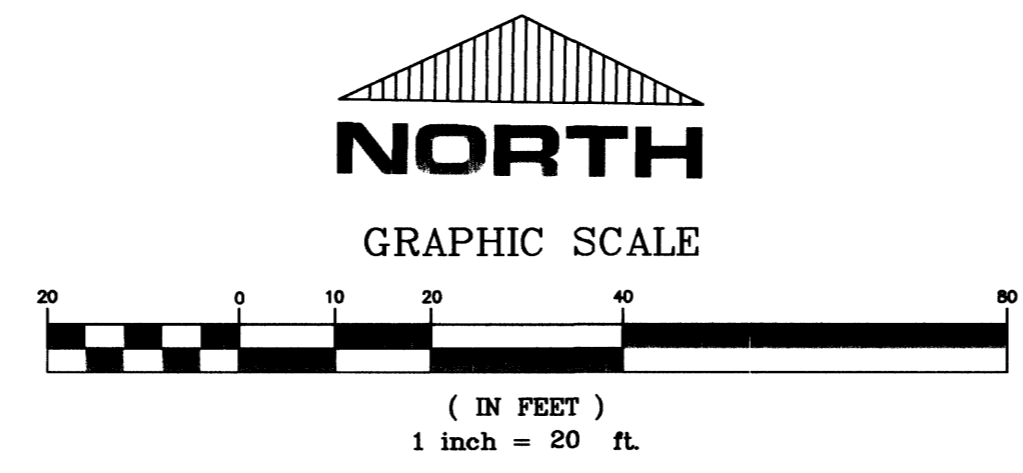
**SAFETY ALERT**

**Call before you Overhead**

593-6111

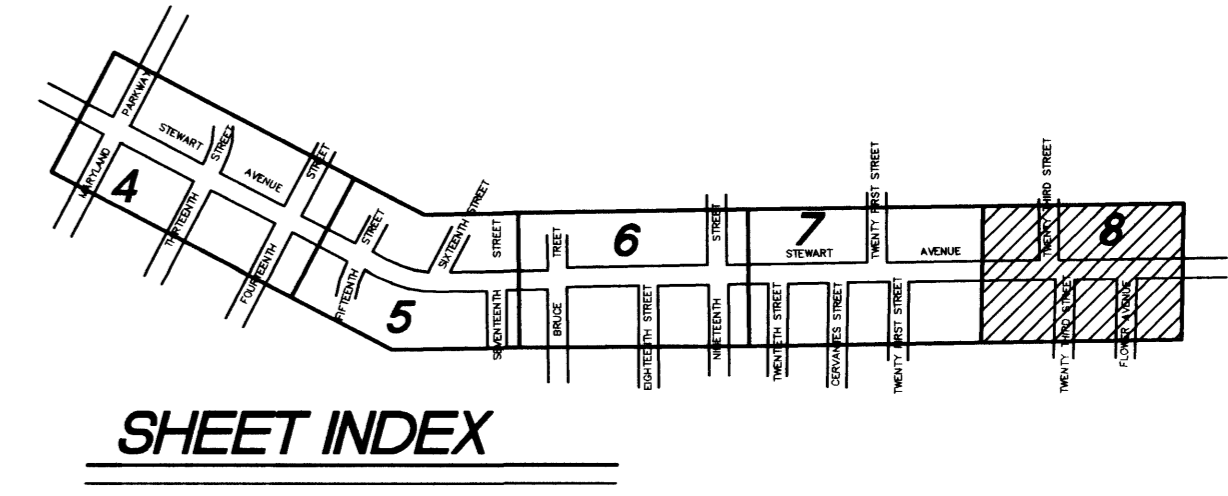
OVERHEAD SERVICE ALERT

**UTILITY NOTE:**  
UTILITY LOCATIONS SHOWN HEREON ARE APPROXIMATE ONLY. IT SHALL BE THE CONTRACTOR'S RESPONSIBILITY TO DETERMINE THE EXACT VERTICAL AND HORIZONTAL LOCATION OF ALL EXISTING UNDERGROUND UTILITIES PRIOR TO COMMENCING CONSTRUCTION. NO REPRESENTATION IS MADE THAT ALL EXISTING UTILITIES ARE SHOWN HEREON. THE ENGINEER ASSUMES NO RESPONSIBILITY FOR UTILITIES NOT SHOWN OR UTILITIES IN THEIR PROPER LOCATION.



**HATCH LEGEND**

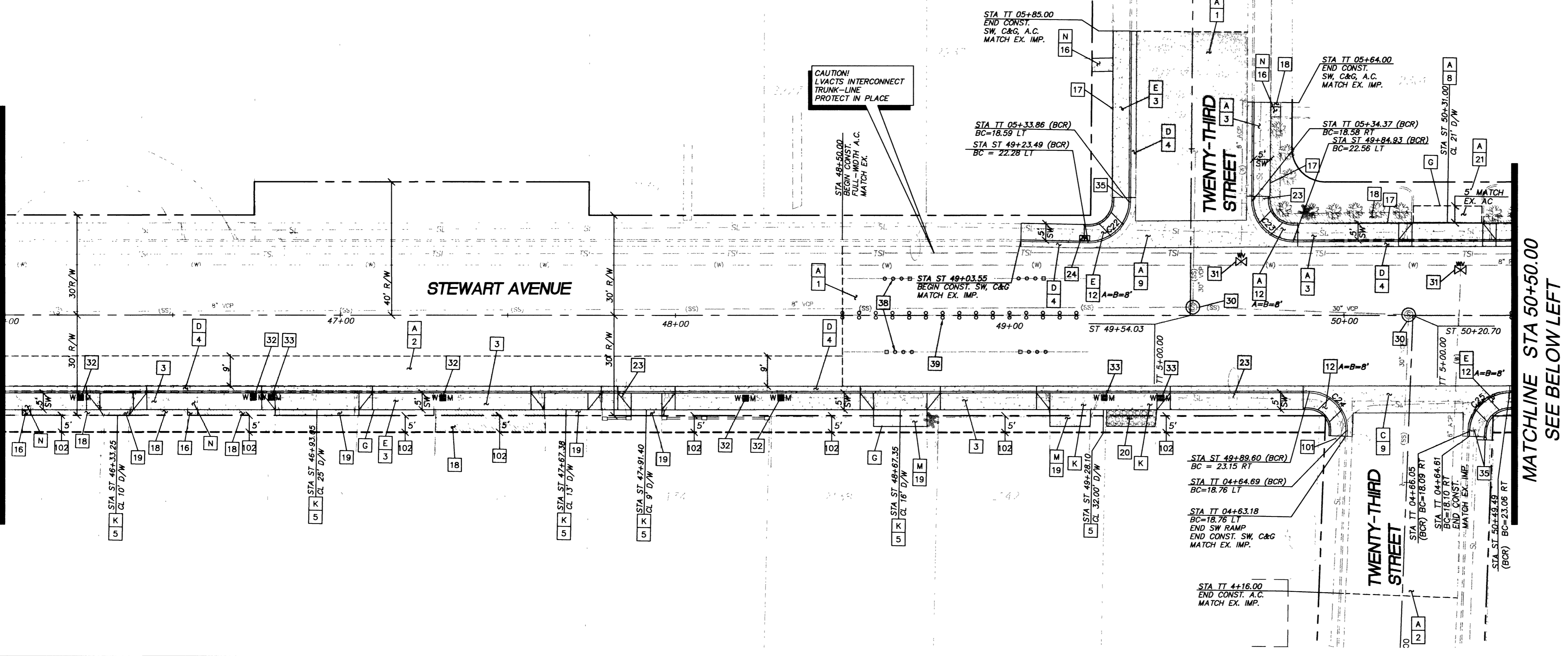
[Hatched Box]	REMOVE AND REPLACE FULL-DEPTH PAVEMENT SECTION	[Hatched Box]	REPAIR LANDSCAPE AND/OR GRADE TO DRAIN
[Hatched Box]	NEW A.C. PATCH	[Hatched Box]	TYPE II AGGREGATE DRIVEWAY TRANSITION
[Hatched Box]	NEW CONCRETE CURB, GUTTER, SIDEWALK, FLATWORK, DRIVEWAY		



**KEY NOTES**

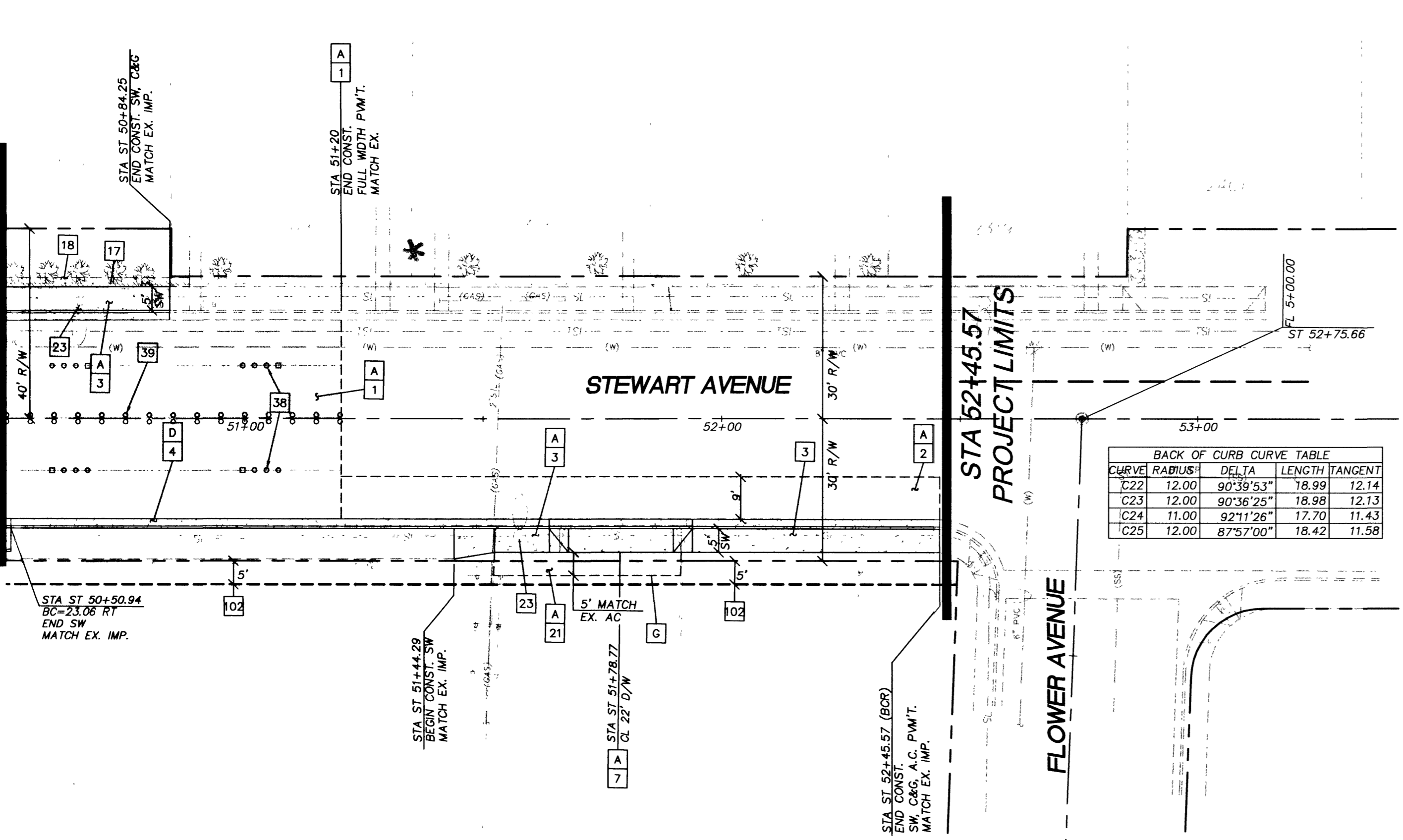
- REMOVAL ITEMS:**
- A REMOVE ASPHALT BITUMINOUS PAVEMENT (202.00.01)
  - B NOT USED
  - C REMOVE CONCRETE CROSS GUTTER (202.00.04)
  - D REMOVE CONCRETE CURB & GUTTER (202.00.02)
  - E REMOVE CONCRETE SIDEWALK (202.00.03)
  - F NOT USED
  - G SAW CUT EX. A.C. OR P.C.C. (INCIDENTAL TO OTHER ITEMS OF WORK)
  - H NOT USED
  - I NOT USED
  - J REMOVE EXISTING DROP INLET (202.00.05)
  - K REMOVE CONCRETE DRIVEWAY (202.00.03)
  - M REMOVE DRIVEWAY TRANSITION (202.00.03)
  - N REMOVE PRIVATE WALKWAY (202.00.03)
- CONSTRUCTION ITEMS:**
- 1 CONSTRUCT STRUCTURAL PAVEMENT SECTION PER TYPICAL SECTIONS SHEET 14 (203.00.01, 302.00.01, 404.00.01)
  - 2 CONSTRUCT 4" HOT PLANT MIX RECYCLED BITUMINOUS PAVEMENT PATCH PER DETAIL "A" SHEET 14 (404.00.02)
  - 3 CONSTRUCT CONCRETE SIDEWALK PER USD No. 234 (TO THE NEAREST WEAKENED JOINT). (613.00.01)
  - 4 CONSTRUCT CONCRETE "L" TYPE CURB & GUTTER PER USD No. 216 (TO THE NEAREST WEAKENED JOINT) (613.00.02)
  - 5 CONSTRUCT CONCRETE RESIDENTIAL DRIVEWAY PER USD No. 223 (613.00.03)
  - 6 CONSTRUCT CONCRETE MODIFIED RESIDENTIAL DRIVEWAY PER DETAIL "C" SHEET 15 (613.00.03)
  - 7 CONSTRUCT DEPRESSED CONCRETE ALLEY DRIVEWAY PER USD No. 227 (613.00.06)
  - 8 CONSTRUCT CONCRETE COMMERCIAL DRIVEWAY PER USD No. 224 (613.00.04)
  - 9 CONSTRUCT CONCRETE CROSS GUTTER PER USD No. 228 (613.00.07)
  - 10 CONSTRUCT 24" CONCRETE ROLL CURB PER USD No. 217 (613.00.08)
  - 11 NOT USED
  - 12 CONSTRUCT CONCRETE SIDEWALK RAMP PER USD No. 235 CASE No. 1 (613.00.01)
  - 13 CONSTRUCT CONCRETE SIDEWALK RAMP PER USD No. 235 CASE No. 2 (613.00.01)
  - 14 CONSTRUCT CONCRETE FLATWORK (613.00.01)
  - 15 CONSTRUCT SPANDREL PER USD No. 228 (613.00.07)
  - 16 CONSTRUCT PRIVATE CONCRETE WALKWAY (613.00.01)
  - 17 REMOVE & RELOCATE EXISTING FENCE AS SHOWN (212.00.01)
  - 18 REPAIR LANDSCAPE AND/OR REGRADE TO DRAIN (212.00.01)
  - 19 CONSTRUCT CONCRETE DRIVEWAY TRANSITION PER DETAIL "D" SHEET 15 (613.00.05)
  - 20 CONSTRUCT GRAVEL DRIVEWAY TRANSITION PER DETAIL "D" SHEET 15 (302.00.01)
  - 21 CONSTRUCT A.C. DRIVEWAY TRANSITION PER DETAIL "D" SHEET 15 (404.00.02)
  - 22 CONSTRUCT RETAINING WALL PER DETAIL "B" SHEET 15 (212.00.02)
  - 23 ADJUST EX. STREETLIGHT TO FINISH GRADE (623.00.01)
  - 24 REMOVE & REPLACE No. 3 1/2 PULL BOX PER USD No.'s 326, 328 AND 404.141 (623.00.02)
  - 25 REMOVE & REPLACE No. 5 PULL BOX PER USD No.'s 328, 404.120 AND 404.141 (623.00.03)
  - 26 REMOVE & REPLACE No. 7 PULL BOX PER USD No.'s 328, 404.130 AND 404.141 (623.00.04)
  - 27 NOT USED
  - 28 NOT USED
  - 29 NOT USED
  - 30 ADJUST MANHOLE TO FG AND CONSTRUCT CONC. COLLAR PER DCSWCS 30-38 (629.00.01)
  - 31 ADJUST VALVE BOX TO FG PER UDACS STANDARD PLATE No. 8 (629.00.01)
  - 32 REMOVE & REPLACE NON-TRAFFIC BEARING WATER METER BOX PER UDACS PLATE 1B OR 1D (629.00.02)
  - 33 INSTALL LVVMD ARMORCAST TRAFFIC BEARING METER BOX AND ADJUST SERVICE CONNECTION AS NEEDED PER UDACS PLATE 1B OR 1D (629.00.03)
  - 34 REMOVE AND RELOCATE EXISTING FIRE HYDRANT AND SERVICE PER UDACS PLATE No. 7 CONDITION C. (629.00.04)
  - 35 REMOVE SIGN & POST & RESET SIGN ON NEW POST PER USD No. 249 (627.00.01)
  - 36 REMOVE AND REPLACE EX. C.A.T. BUS STOP AND TRASH CAN (202.00.03)
  - 37 CONSTRUCT TRANSITION FROM EX. "ROLL" TYPE C&G TO "L" TYPE C&G (613.00.02)
  - 38 CONSTRUCT TYPE 4 LANE LINE PER USD No. 244A TO MATCH EX. (628.00.01, 628.00.02)
  - 39 CONSTRUCT TYPE 1 CENTERLINE PER USD No. 244 TO MATCH EX. (628.00.01, 628.00.02)

MATCHLINE STA 46+00.00  
SEE SHEET 7



MATCHLINE STA 50+50.00  
SEE BELOW LEFT

MATCHLINE STA 50+50.00  
SEE ABOVE RIGHT



APPROVED BY  
*[Signature]*  
LAS VEGAS VALLEY WATER DISTRICT  
DATE: 10/18/06

REVISIONS	NO.	DATE	DESCRIPTION

**DEPARTMENT OF PUBLIC WORKS**  
**ENGINEERING DESIGN SECTION**

CITY ENGINEER: CHARLES KALKONSKI, JR., P.E.  
PROJECT ENGINEER: JERRY L. TURNER, P.E.  
DESIGNED BY: HME/YSM/JLT  
CHECKED BY: JLT

**STEWART AVENUE SIDEWALK INFILL**  
**MARYLAND PKWY TO FLOWER AVE**

**PLAN VIEW**  
**STA 46+00 TO 52+45.57**

TITLE: SHEET: No. 8880  
10-18-06

Sheet **8** of 15  
DRAWING NO. 107-V3463

BID #02.1730.12