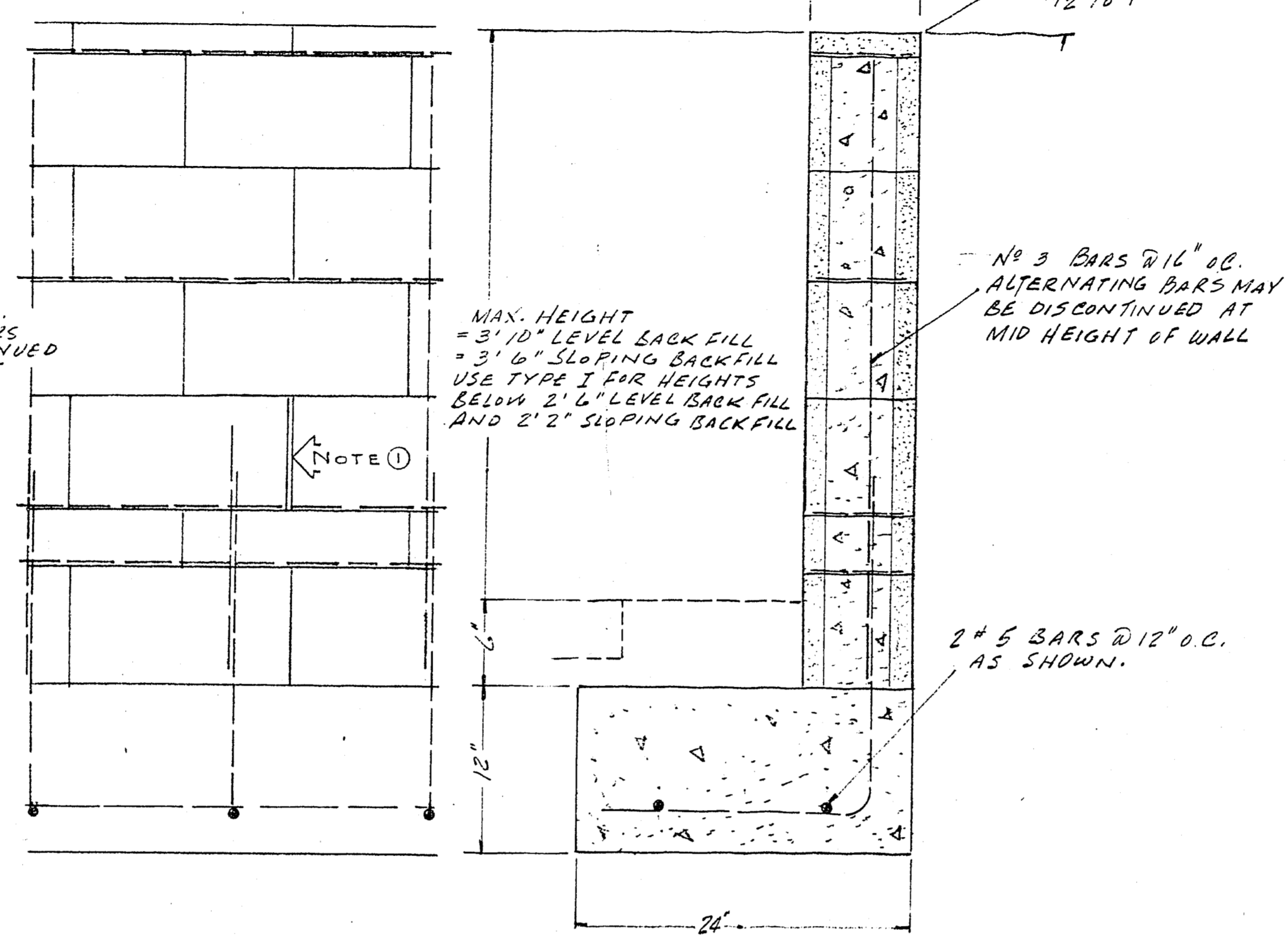
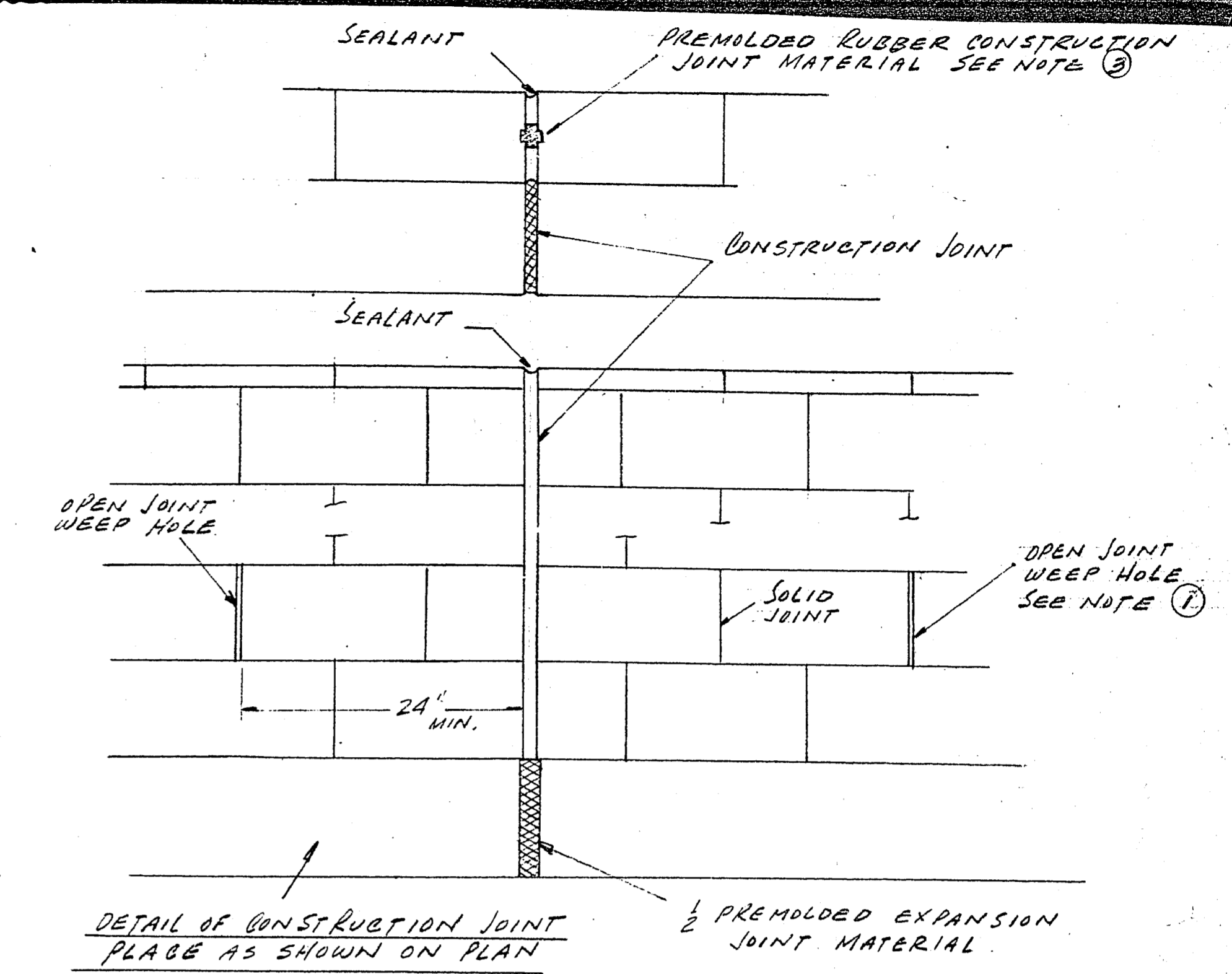


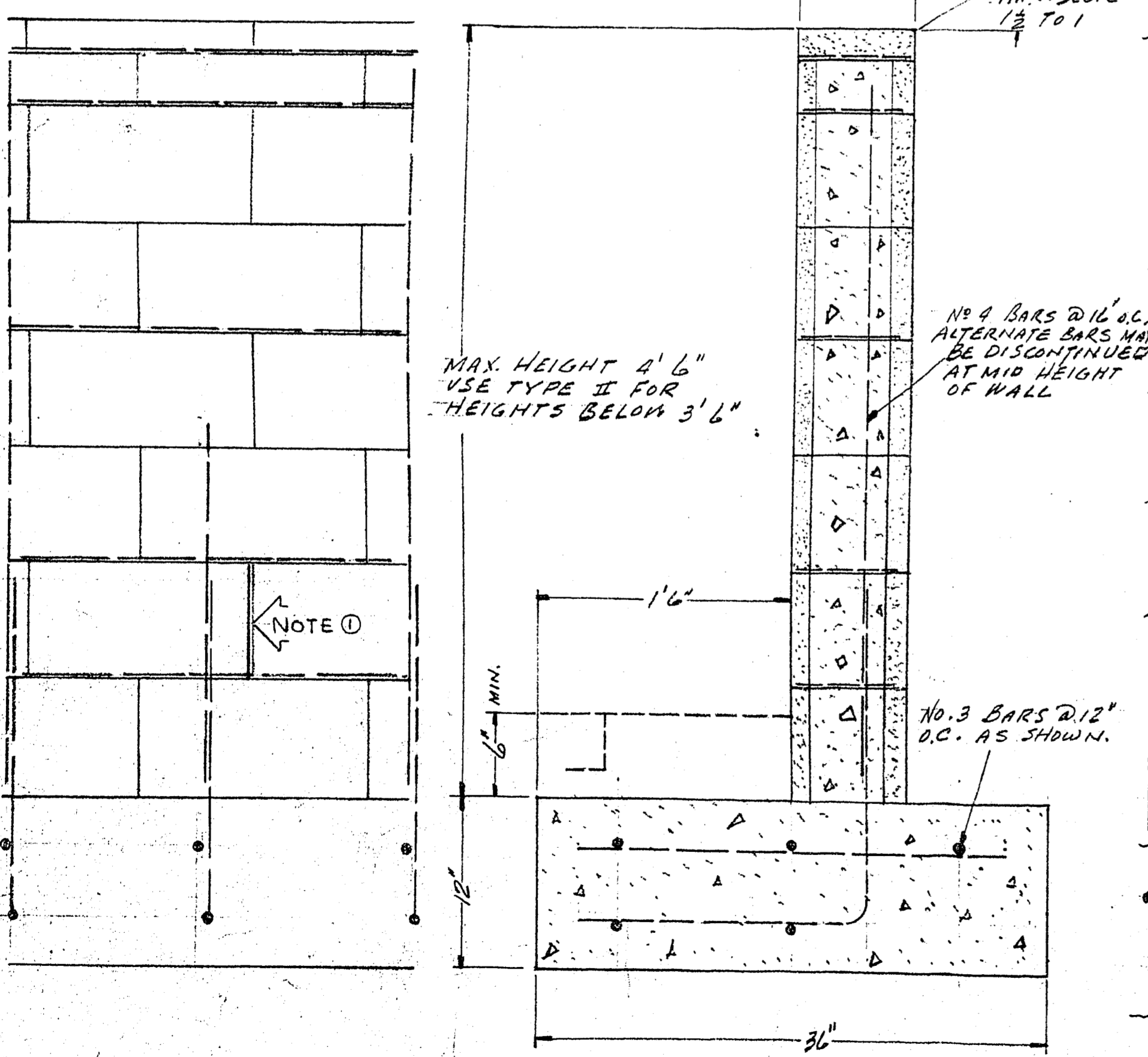
TYPE I



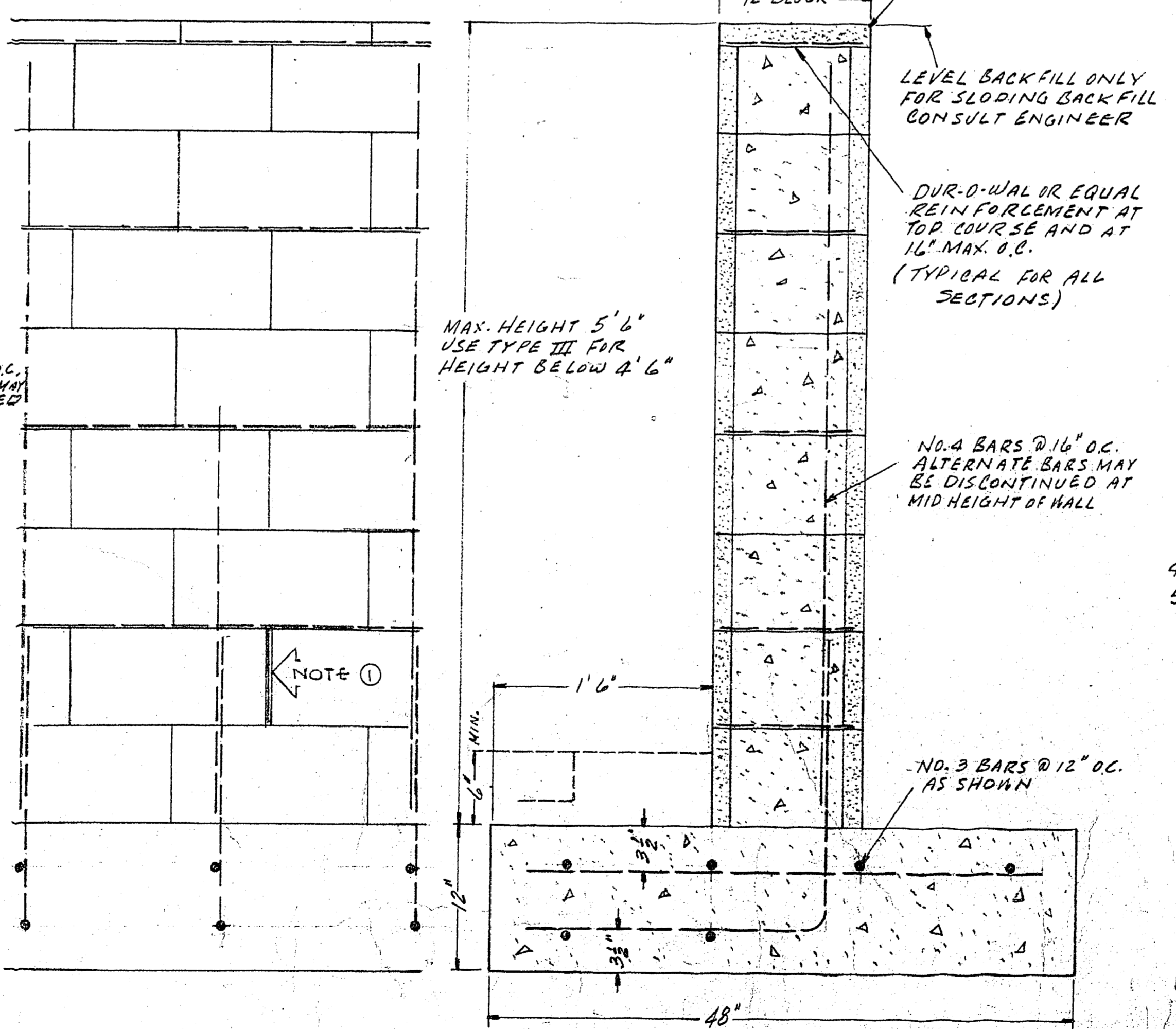
TYPE II



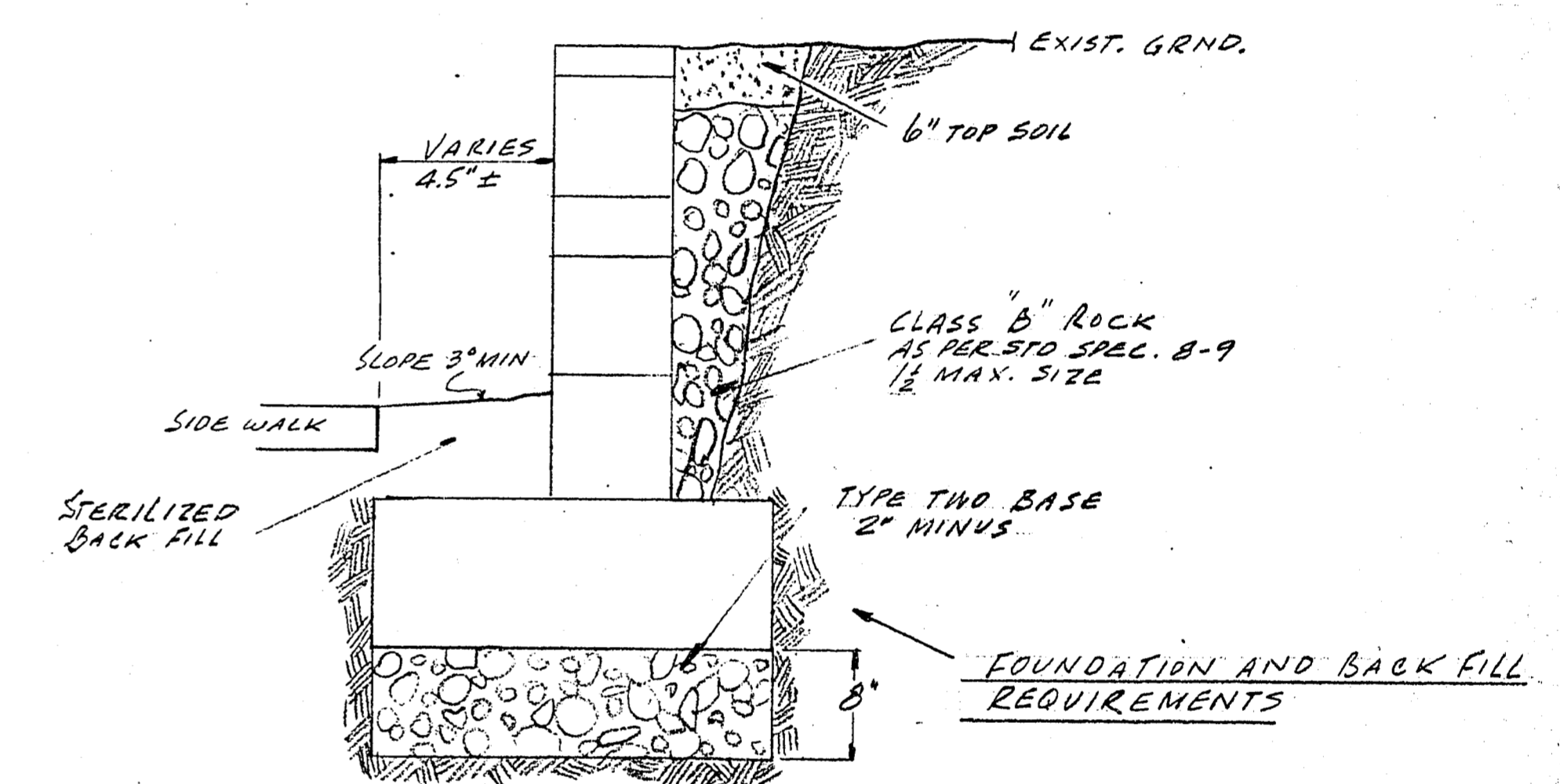
DETAIL OF CONSTRUCTION JOINT  
PLATE AS SHOWN ON PLAN



TYPE III



TYPE IV



FOUNDATION AND BACK FILL REQUIREMENTS

- NOTES
- In first full course above ground line, as shown on the plans, omit mortar in every alternate vertical joint and leave full 3/8" opening for weep hole, except that the first joint from any end, corner, or construction joint shall be a full mortar joint. Place 'Dur-o-wal' or equal reinforcement below and above this course. (See Note 5)
  - Grout all cells solid for full depth
  - Preformed rubber construction joint shall be equal in quality to the following brand names: 'Tite wall', (A.A. Wire Products Co.), 'Block Joint', (Carter-Waters Corp.), 'Rapid Control Joint', (Dur-o-wal) and shall be either regular or wide flange. If regular joint is used the joint shall be sealed with a white rubber base sealant, acceptable to the engineer. If the wide-flange joint is furnished by Dur-o-wal, sealant shall be used at the top of the joint only. No reinforcement shall project through the joint.
  - All blocks adjacent to construction joint shall be std. sash blks. full lgt. and half lgt.
  - Horizontal wall reinforcement shall be equal in quality to the following brand names: 'Blok-lock', (A.A. Wire Products Co.), 'Blok Mesh', (Carter-Waters Corp.), 'Dur-o-wal', (Dur-o-wal National Inc.) and shall be standard weight of the manufacture except that the side rods and cross rods shall be not less than No. 9 gauge wire. The product may have a plain or mill-galvanized finish.
  - Footing shall be Class F concrete 3000 p.s.i. @ 28 day, as per std. Spec.

|               |         |
|---------------|---------|
| APPROVED DATE | DATE    |
| 6/10/68       | 7/10/68 |
| 7/10/68       | 7/10/68 |
| 7/10/68       | 7/10/68 |
| 7/10/68       | 7/10/68 |
| 7/10/68       | 7/10/68 |
| 7/10/68       | 7/10/68 |

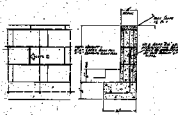
CONTRACT DRAWING  
FEB 10 1968

**CITY OF LAS VEGAS NEVADA  
ENGINEERING DEPT.**

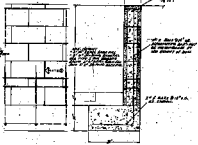
STEWART AVE ~ 8th TO 18th  
BLOCK WALL DETAIL SHEET

|          |      |             |
|----------|------|-------------|
| DES. 723 | DATE | SC. HP      |
| DR.      |      | SC. IN      |
| CKD.     |      | F.B.K. NO.  |
|          |      | P.L.O. NO.  |
|          |      | DRAWING NO. |

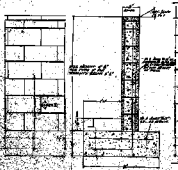
APPROVED BY CITY ENGR. *[Signature]* 8-3-68 107V569



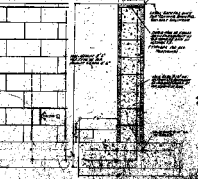
TYPE I



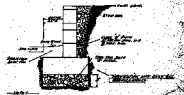
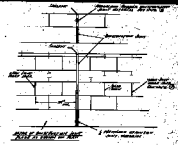
TYPE II



TYPE III



TYPE IV



1. The wall shall be constructed of concrete or masonry and shall be at least 12 inches thick. The wall shall be finished with a smooth surface on the interior and a rough surface on the exterior. The wall shall be finished with a smooth surface on the exterior and a rough surface on the interior.

2. The wall shall be finished with a smooth surface on the interior and a rough surface on the exterior. The wall shall be finished with a smooth surface on the exterior and a rough surface on the interior.

3. The wall shall be finished with a smooth surface on the interior and a rough surface on the exterior. The wall shall be finished with a smooth surface on the exterior and a rough surface on the interior.

4. The wall shall be finished with a smooth surface on the interior and a rough surface on the exterior. The wall shall be finished with a smooth surface on the exterior and a rough surface on the interior.