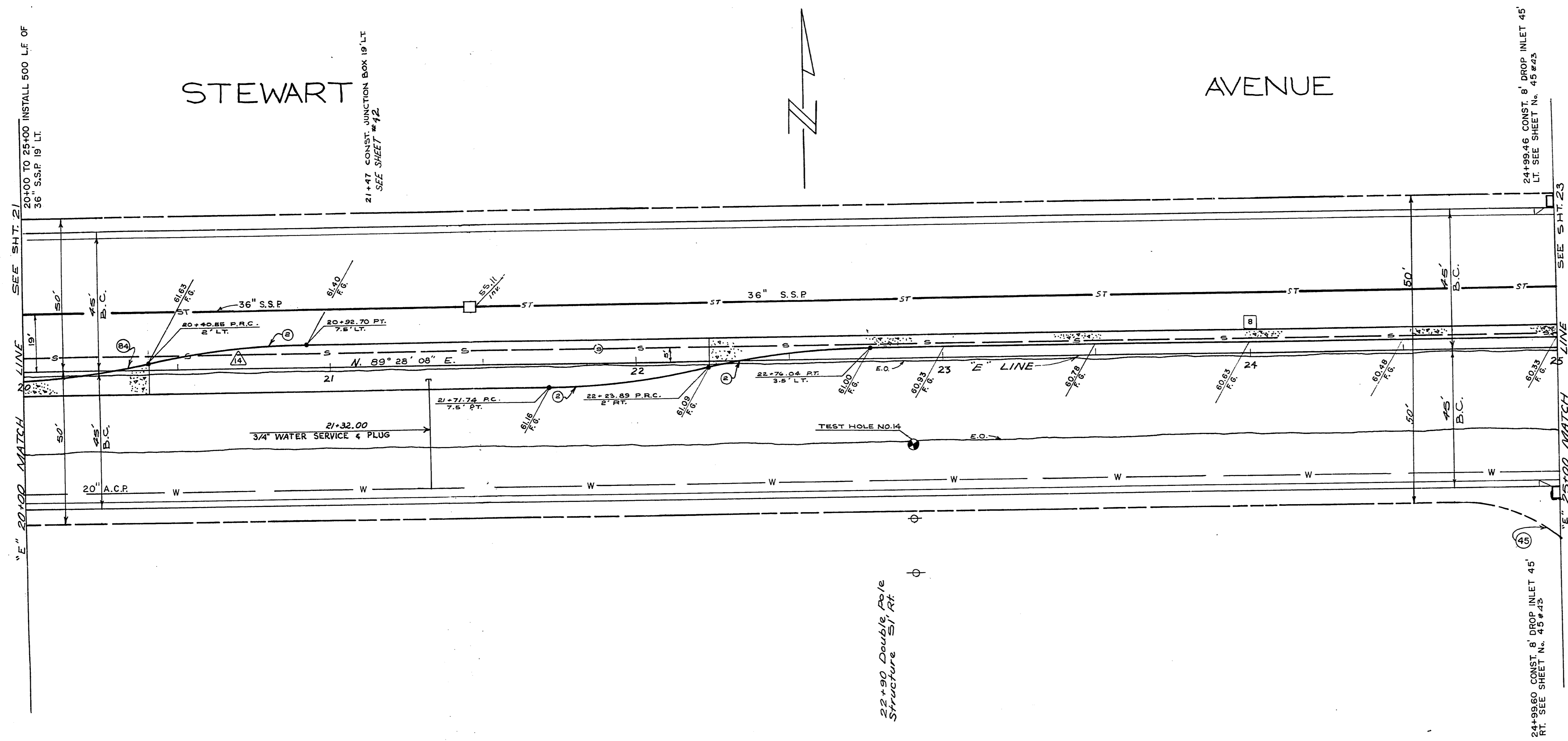


STEWART

AVENUE



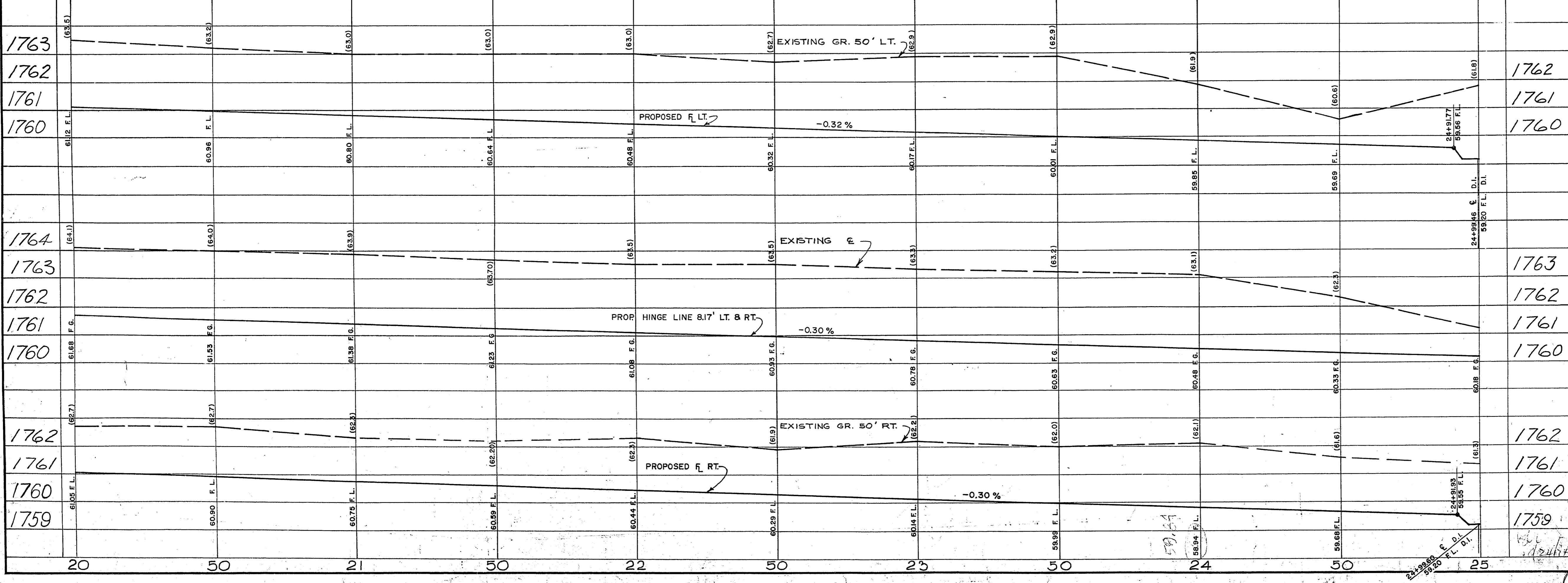
APPROXIMATE QUANTITIES THIS SHEET

ITEM NO.	DESCRIPTION	CLV	R/S/H	JTD	TOTAL	UNIT
302.200	36 IN. S.S.P.		500		500	L.F.
302.200	TYPE II GRAVEL BASE		924	262	1186	C.Y.
334.008	4 IN. ASPHALTIC CONCRETE 9/4		787	204	990	TONS
354.910	ISLAND ASPHALT CONCRETE	43			43	GAL.
333.500	1/2 IN. OPEN-GRADED PLANT-MIX SUR		3386	875	4261	S.Y.
334.800	BITUMINOUS PRIME COAT		1012	263	1275	GAL.
340.014	"L" TYPE C & G (24 IN. WIDE)		1002	984	984	L.F.
340.041E	17 IN. EXTRUDED "A" TYPE CURB		1416		1416	S.F.
340.145	5 IN. ISLAND CONCRETE		25		25	TONS
334.503	1-1/2 IN. A.C. ISLAND SURFACING					E.A.
512.500	ADJUST SEWER MANHOLE					E.A.
500.400	JUNCTION STRUCTURE					E.A.
200.100	EXCAVATION-UNCLASSIFIED		4044	1419	5463	C.Y.
	CUT		0	0	0	C.Y.
	FILL		0	0	0	C.Y.
560.190	3/4" ISLAND WATER SERVICE CONNECTION					E.A.
104.500	LIME STABILIZED BASE		3389	1144	5033	S.Y.

CURVE DATA

CURVE NO.	LOC	DELTA	RADIUS	LENGTH	TANGENT
2	B.C.	12° 02' 26"	250.0'	52.54'	26.37'
45	R/W	88° 44' 10"	55.0'	85.18'	53.80'
64	B.C.	09° 22' 52"	250.0'	40.93'	20.51'

B.M. NO. 06231-D5 S.W. CORNER PRINCE LANE & STEWART AVENUE ELEV. 1764.58

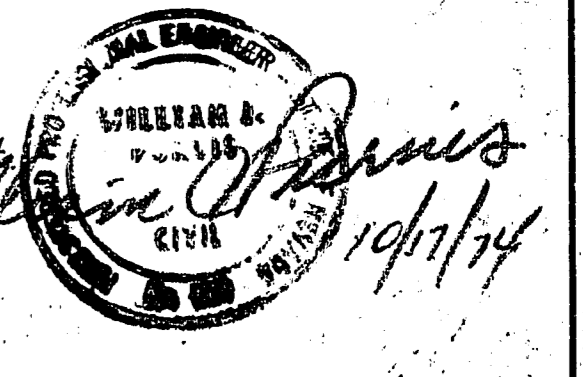


EXISTING UTILITIES ARE LOCATED ON THE PLANS FOR THE CONVENIENCE OF THE CONTRACTOR ONLY. THE CONTRACTOR SHALL BEAR FULL RESPONSIBILITY FOR PROTECTION OF UTILITIES AND THE CITY BEARS NO RESPONSIBILITY FOR UTILITIES NOT SHOWN ON THE PLANS OR NOT IN THE LOCATION SHOWN ON THE PLANS.

CONTRACT DRAWING  
NOV 8 1974

Test Hole No. 14

- 1.5' GW Gravel
- 5.0' CL Silty Clay



REVISION NO.	DESCRIPTION	BY	DATE APPROVED

CITY OF LAS VEGAS NEVADA  
DEPARTMENT OF PUBLIC WORKS  
SERVICES DIVISION

STEWART AVE.  
28<sup>th</sup> to NELLIS BLVD.

W.O. NO. 7682	E.B.K. NO. 59-21	DATE	DRAWING NO.
SC (H) 17-20	SC (V) 17-21	11/16/73	107-V819A
DES. G. Billingsley, Carl P. Malone		DR. L. Zimmerman	FILE NO.
APPROVED BY DIRECTOR OF PUBLIC WORKS		10/25/74	107-V819A
James Hampton			SHEET 22 OF 70

16-4-108