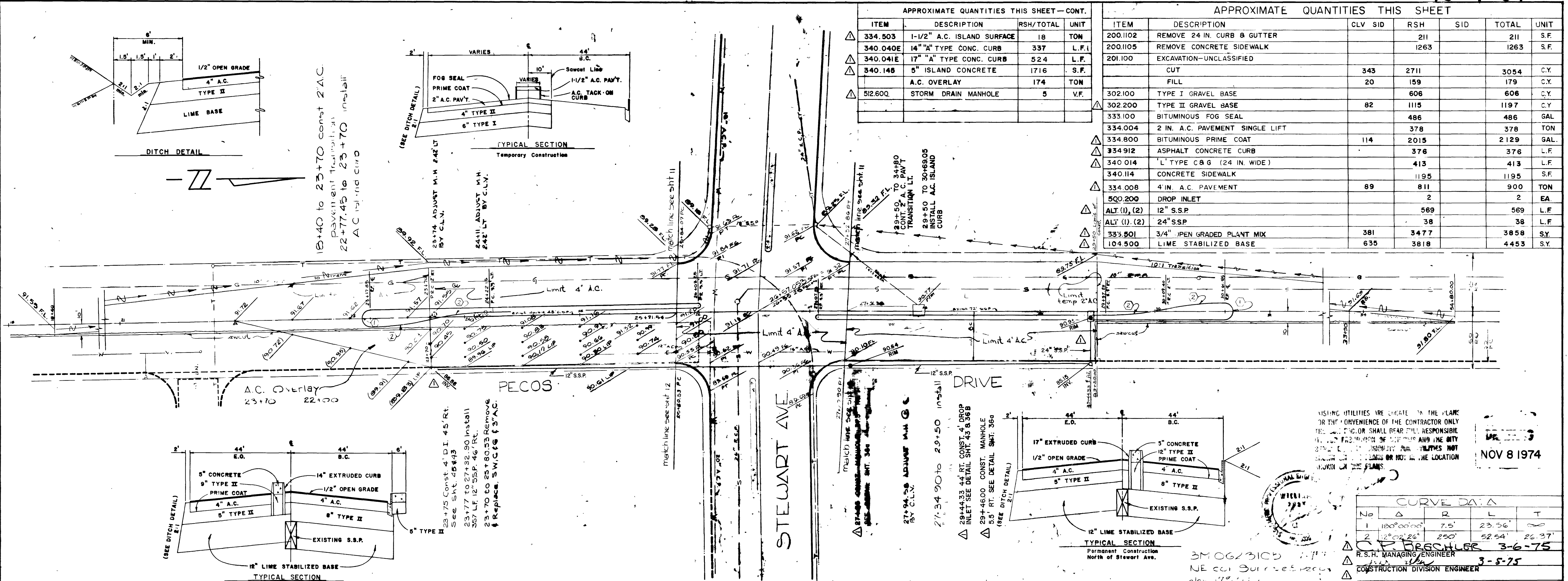


16-4-59



APPROXIMATE QUANTITIES THIS SHEET - CONT.

ITEM	DESCRIPTION	RSH/TOTAL	UNIT
334.503	1-1/2" A.C. ISLAND SURFACE	18	TON
340.040E	14" "A" TYPE CONC. CURB	337	L.F.
340.041E	17" "A" TYPE CONC. CURB	524	L.F.
340.14E	5" ISLAND CONCRETE	1716	S.F.
	A.C. OVERLAY	174	TON
512.60Q	STORM DRAIN MANHOLE	5	V.F.

APPROXIMATE QUANTITIES THIS SHEET

ITEM	DESCRIPTION	CLV	SID	RSH	SID	TOTAL	UNIT
200.102	REMOVE 24 IN. CURB & GUTTER			211		211	S.F.
200.105	REMOVE CONCRETE SIDEWALK			1263		1263	S.F.
201.001	EXCAVATION-UNCLASSIFIED						
	CUT			343	2711	3054	C.Y.
	FILL			20	159	179	C.Y.
302.100	TYPE I GRAVEL BASE			606		606	C.Y.
302.200	TYPE II GRAVEL BASE			82	1115	1197	C.Y.
333.100	BITUMINOUS FOG SEAL			486		486	GAL.
334.004	2 IN. A.C. PAVEMENT SINGLE LIFT			378		378	TON
334.800	BITUMINOUS PRIME COAT			114	2015	2129	GAL.
334.912	ASPHALT CONCRETE CURB			376		376	L.F.
340.014	L' TYPE C&G (24 IN. WIDE)			413		413	L.F.
340.114	CONCRETE SIDEWALK			1195		1195	S.F.
334.008	4 IN. A.C. PAVEMENT			89	811	900	TON
500.200	DROP INLET			2		2	EA
ALT (1) (2)	12" S.S.P.			569		569	L.F.
ALT (1) (2)	24" S.S.P.			38		38	L.F.
333.901	3/4" OPEN GRADED PLANT MIX			381	3477	3858	S.Y.
104.500	LIME STABILIZED BASE			635	3818	4453	S.Y.

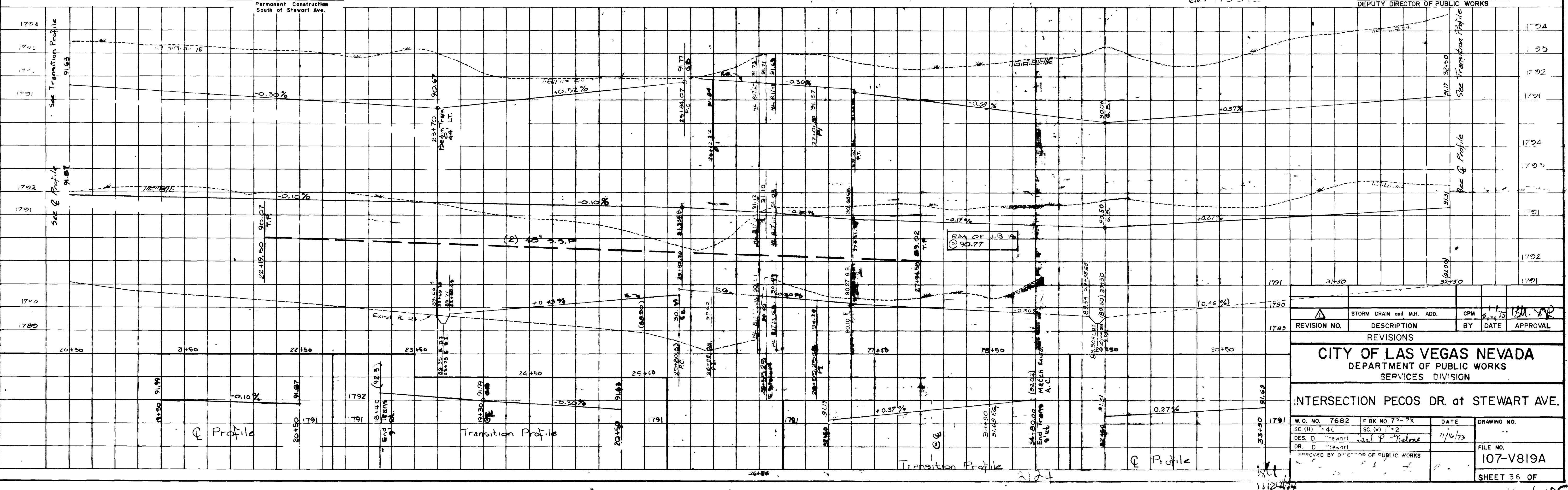
EXISTING UTILITIES ARE LOCATED BY THE PLANK OR THE DRYING OF THE CONTRACTOR ONLY. THE CONTRACTOR SHALL BE RESPONSIBLE FOR THE PROTECTION OF ALL UTILITIES AND THE CITY SHALL NOT BE RESPONSIBLE FOR DAMAGES OR INJURY TO THE UTILITIES OR TO THE PLANKS.

NOV 8 1974

CURVE DATA

No.	Δ	R	L	T
1	180°00'00"	7.5'	23.36'	
2	180°02'26"	200'	52.54'	26.37'

R.S.N. MANAGING ENGINEER
 DEPUTY DIRECTOR OF PUBLIC WORKS



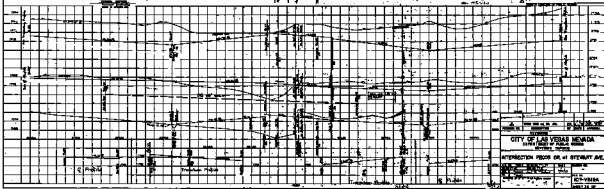
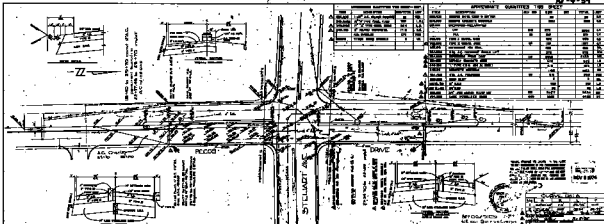
REVISION NO.	DESCRIPTION	BY	DATE	APPROVAL
1	STORM DRAIN AND M.H. ADD.	CPM	11/1/74	

CITY OF LAS VEGAS NEVADA
 DEPARTMENT OF PUBLIC WORKS
 SERVICES DIVISION

INTERSECTION PECOS DR. at STEWART AVE.

W.O. NO. 7682	F.B.K. NO. 77-7X	DATE	DRAWING NO.
DES. BY Stewart	SC. (V) 1/2	11/1/74	107-V819A
DR. D. Stewart			FILE NO.
APPROVED BY DIRECTOR OF PUBLIC WORKS			SHEET 36 OF

16-4-125



CITY OF LAS VEGAS NEVADA
 DEPARTMENT OF PUBLIC WORKS
 ENGINEERING SECTION

INTERSECTION PEGOS DR. & STEWART AVE.

DATE: 10/1/58
 DRAWN BY: [Name]
 CHECKED BY: [Name]
 APPROVED BY: [Name]