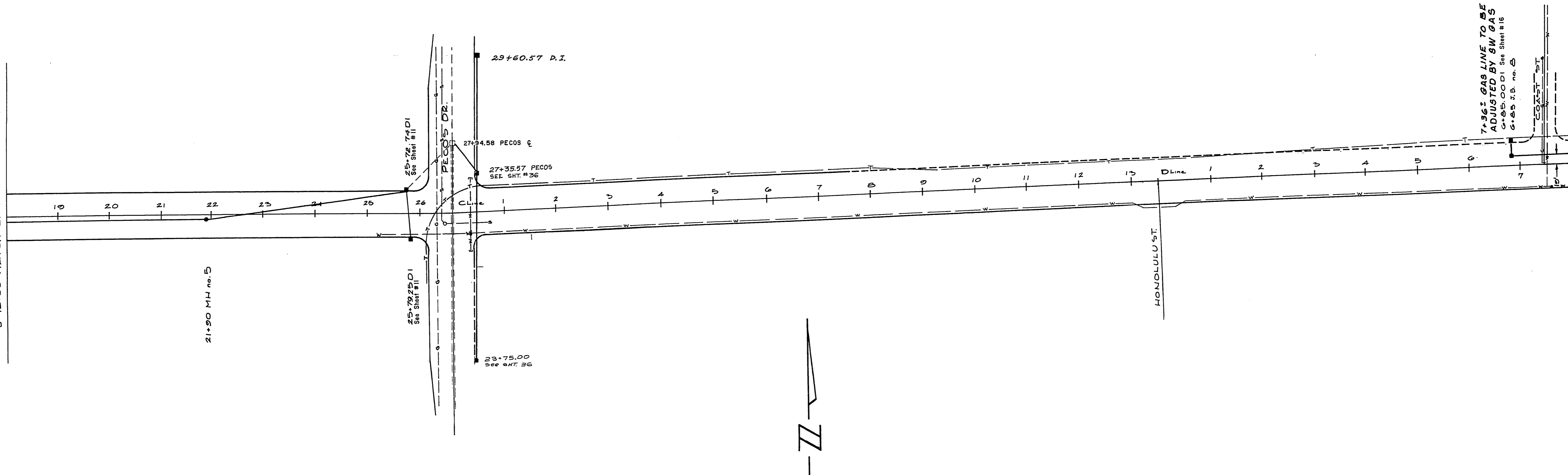
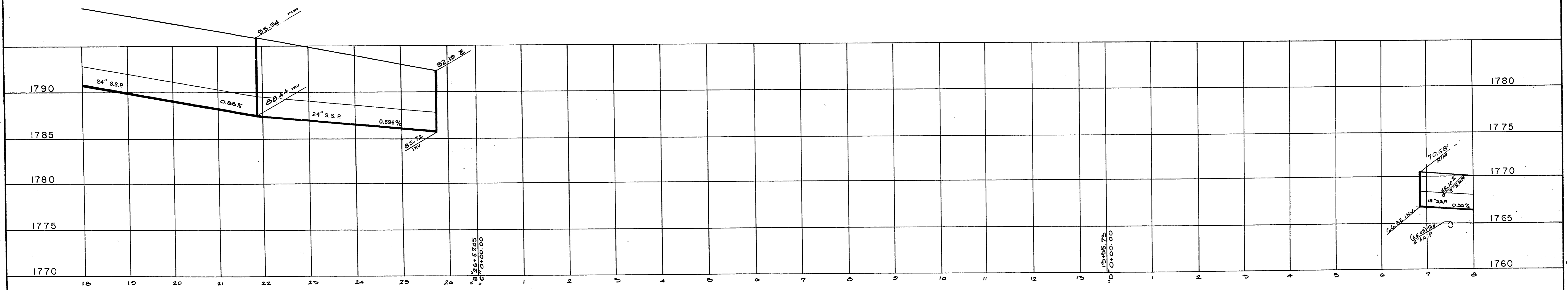


8" 18x00 MATCH LINE SEE SHEET 47

8" 24x00 MATCH LINE SEE SHEET 49



7.56' GAS LINE TO BE
ADJUSTED BY SW GAS
C-85.0001 See Sheet # 16
G-85.7.B. no. 5



NOTE: ALL S.S.P. DIMENSIONS ARE CALCULATED WITH R.C.P. WALL DIMENSIONS FOR MAXIMUM THICKNESSES AND MINIMUM CLEARANCES.

SEE SHEET 43, 44, 45 FOR DETAILS OF MANHOLES & LATERALS

EXISTING UTILITIES ARE LOCATED ON THE PLANS FOR THE CONVENIENCE OF THE CONTRACTOR ONLY. THE CONTRACTOR SHALL BEAR FULL RESPONSIBILITY FOR PROTECTION OF UTILITIES AND THE CITY BEARS NO RESPONSIBILITY FOR UTILITIES NOT SHOWN ON THE PLANS OR NOT IN THE LOCATION SHOWN ON THE PLANS.

CONTRACT DRAWING
NOV 8 1974

William J. Hampton
10/17/74

CITY OF LAS VEGAS NEVADA DEPARTMENT OF PUBLIC WORKS SERVICES DIVISION			
STEWART AVE STORM DRAIN PLAN & PROFILE			
W.O. NO. 7682	F.B.K. NO.	DATE	DRAWING NO.
SC. (H) 1"=100'	SC. (V) 1"=5'	11/16/73	
DES. C. MALONE	DR. D.E.S.		FILE NO.
APPROVED BY DIRECTOR OF PUBLIC WORKS			107-V819A
<i>James Hampton</i>		10/25/74	SHEET 48 OF 70

116-4-138