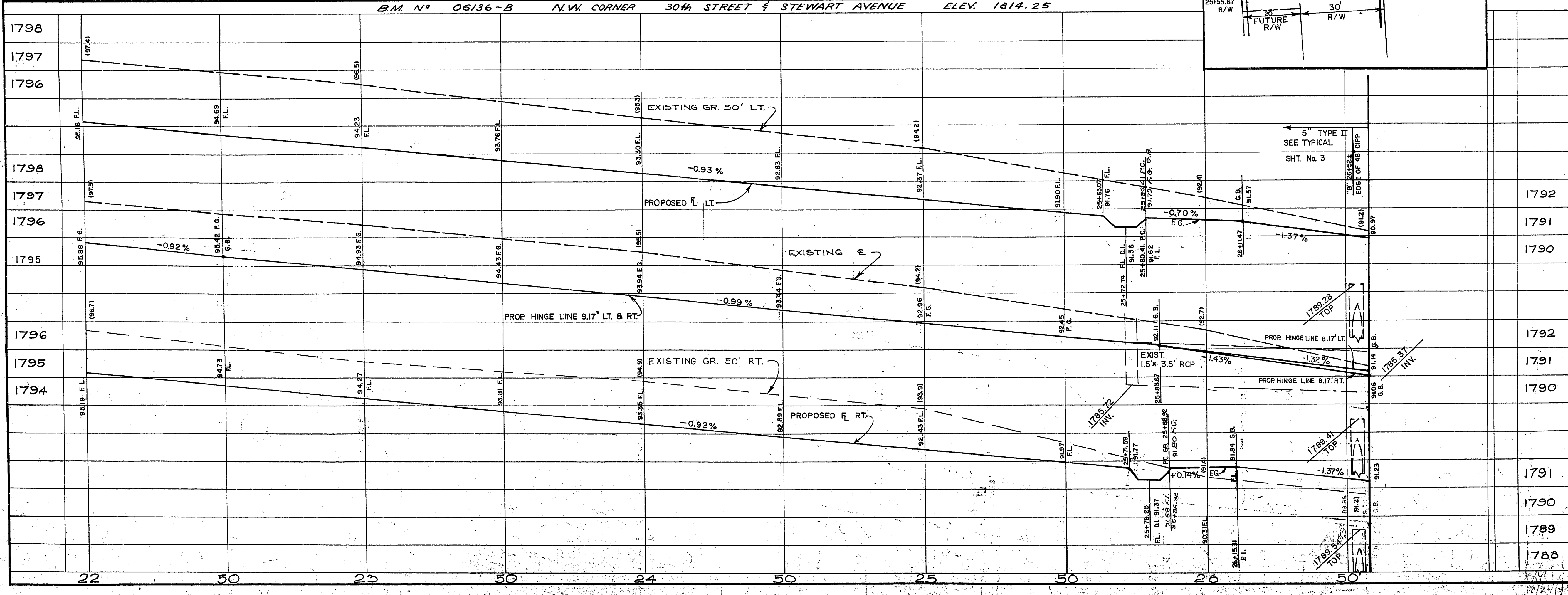
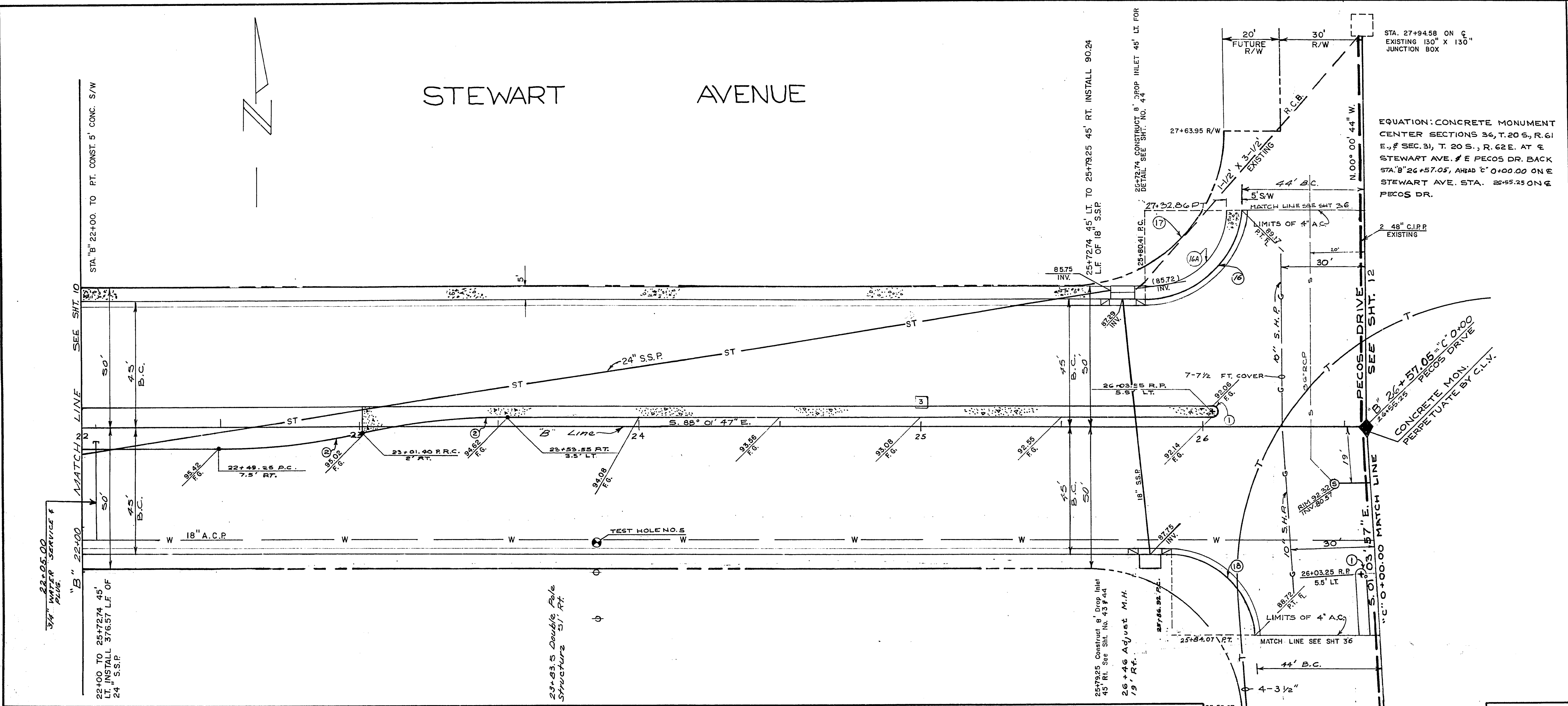


STEWART AVENUE



EQUATION: CONCRETE MONUMENT CENTER SECTIONS 36, T.20 S., R. 61 E., SEC. 31, T. 20 S., R. 62 E. AT STEWART AVE. & PECOS DR. BACK STA. 26+57.05, AHEAD C/O+00.00 ON STEWART AVE. STA. 26+55.25 ON PECOS DR.

ITEM NO.	DESCRIPTION	QTY	UNIT
18	IN. S.S.P.	90	L.F.
24	IN. S.S.P.	377	L.F.
104	LIME STABILIZED BASE	4952	S.Y.
302	TYPE II GRAVEL BASE	783	C.Y.
340	14 IN. EXTRUDED 'A' TYPE CONC. CURB	859	L.F.
340	4 IN. ASPHALTIC CONCRETE SINGLE LIFT	850	TONS
334	ISLAND ASPHALT COATING	24	GAL.
334	1/2 IN. OPEN-GRADED PLANT-MIX SUR	3643	S.Y.
334	1/2 IN. AC ISLAND SURFACING	14	TONS
334	BITUMINOUS PRIME COAT	1093	GAL.
340	'L' TYPE C & G (24 IN. WIDE)	831	L.F.
340	CONST. 5 FT. CONC. SIDEWALK	2086	S.F.
340	5 IN. ISLAND CONCRETE	1394	S.F.
500	DROP INLET	2	EA.
512	ADJUST. SEWER MANHOLE	1	EA.
560	3/4" ISLAND WATER CONNECTION	1	EA.
201	EXCAVATION-UNCLASSIFIED	954	C.Y.
201	CUT	2802	C.Y.
201	FILL	0	C.Y.

CONTRACT DRAWING NOV. 8, 1974

CURVE NO.	LOC.	DELTA	RADIUS	LENGTH	TANGENT
1	B.C.	180°00'00"	2.0'	6.28'	∞
2	B.C.	12°02'26"	250.0'	52.54'	26.37'
16	B.C.	91°58'57"	30.0'	48.16'	31.06'
17	R/W	91°58'57"	55.0'	88.30'	36.94'
18	B.C.	86°57'50"	30.0'	45.53'	28.45'
19	P.L.	86°57'50"	55.0'	83.43'	52.11'
20	B.S.W.	91°58'57"	25.00'	40.13'	25.88'

Test Hole No 5
 B 23+84.41 RT
 10/17/74
 CL silty clay
 5.0' CL silty clay wet

REVISION NO.	DESCRIPTION	BY	DATE APPROVED
1791			
1790			
1789			
1788			

CITY OF LAS VEGAS NEVADA
 DEPARTMENT OF PUBLIC WORKS
 SERVICES DIVISION

STEWART AVE.
28th to NELLIS BLVD.

W.D. NO. 2682	F.B.K. NO. 69-81	DATE	DRAWING NO.
SC. (H) 1" = 20'	SC. (V) 1" = 2'	11/16/73	FILE NO.
DES. G. Billingsley, Paul P. Malone		APPROVED BY DIRECTOR OF PUBLIC WORKS	10/25/74
DR. J. McDevitt, J. Zimmerman		107-V819A	
APPROVED BY DIRECTOR OF PUBLIC WORKS		SHEET 11 OF 70	