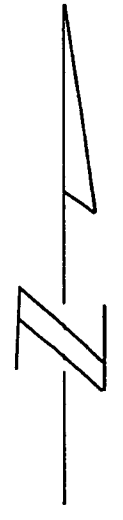


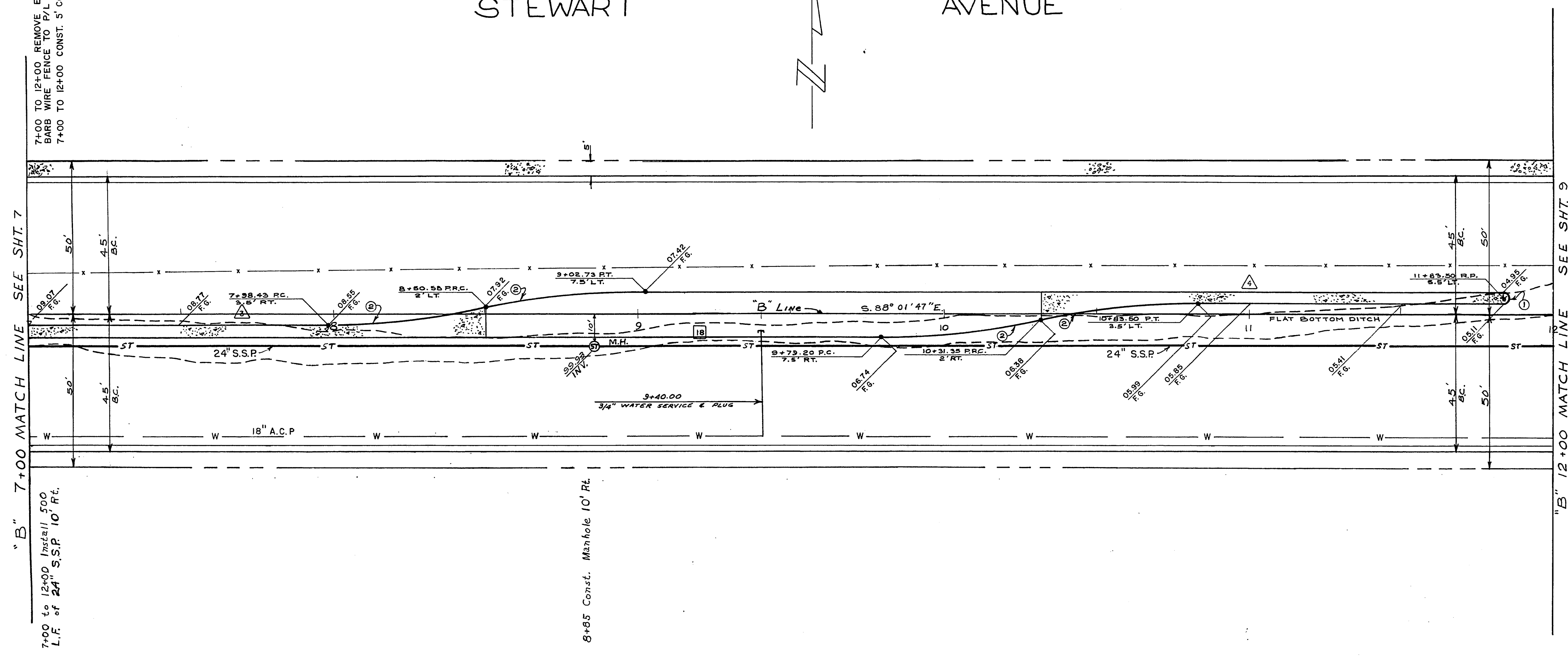
STEWART AVENUE



7+00 TO 12+00 REMOVE EXIST. 3.5' BARR WIRE FENCE TO P/L (BY OWNER)
7+00 TO 12+00 CONST. 5' CONC. S/W

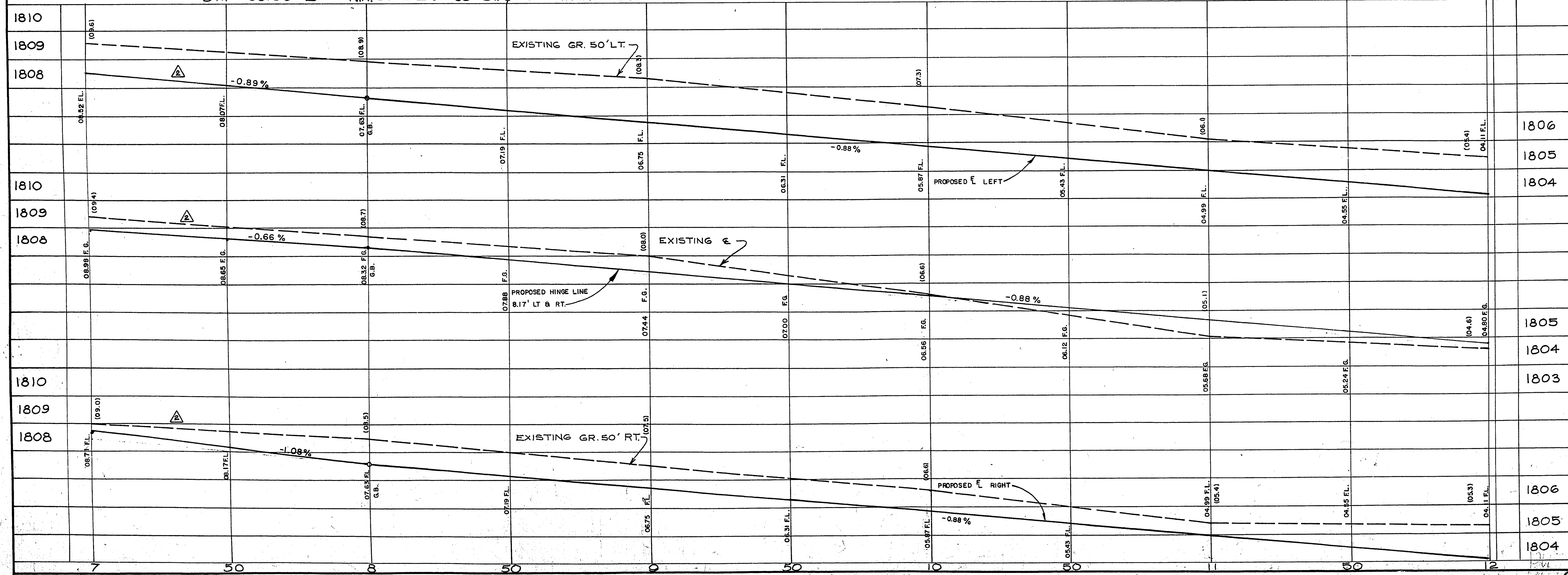
"B" 7+00 MATCH LINE SEE SHT. 7

7+00 to 12+00 Invert 11.500
L.I.F. of 24" S.S.P. 10' RT.



"B" 12+00 MATCH LINE SEE SHT. 9

BM # 06136-B NW CORNER 30th ST & STEWART AVENUE ELEV. 1814.25



ITEM NO.	DESCRIPTION	CLV SID	CLV	RSH	SID	TOTAL	UNIT
24 IN. S.S.P.				500		500	L.F.
TYPE II GRAVEL BASE		232		512		744	C.Y.
4 IN. ASPHALTIC CONCRETE SINGLE LIFT		207	42	789		996	TONS
ISLAND ASPHALT COLORING						42	GAL.
1/2 IN. OPEN-GRADED PLANT-MIX SUR		889		3380		4269	S.Y.
1-1/2 IN. A.C. ISLAND SURFACING		267		25		25	TONS
BITUMINOUS PRIME COAT		1000		1014		1281	GAL.
"L" TYPE C & G (24 IN WIDE)				975		975	L.F.
14" EXTRUDED "A" TYPE CURB				1409		1409	S.F.
5 IN. ISLAND CONCRETE				8		8	S.F.
STORM DRAIN MANHOLE							
EXCAVATION-UNCLASSIFIED		857		1672		2529	C.Y.
CUT		0		152		152	C.Y.
FILL							
3/4 IN. ISLAND WATER SERVICE CONNECTION		2500				2500	S.F.
CONST. 5 FT. CONC. SIDEWALK		1167		3889		5056	S.Y.
LIME STABILIZED BASE							

APPROXIMATE QUANTITIES THIS SHEET

10/17/74

EXISTING UTILITIES ARE LOCATED ON THE PLANS FOR THE CONVENIENCE OF THE CONTRACTOR ONLY. THE CONTRACTOR SHALL BEAR FULL RESPONSIBILITY FOR PROTECTION OF UTILITIES AND THE CITY BEARS NO RESPONSIBILITY FOR UTILITIES NOT SHOWN ON THE PLANS OR NOT IN THE LOCATION SHOWN ON THE PLANS.

CONTRACT DRAWING
NOV. 8 1974

CURVE DATA

CURVE NO.	LOC.	DELTA	RADIUS	LENGTH	TANGENT
①	BC	180° 00' 00"	2.0'	6.28"	∞
②	BC	12° 02' 26"	250.0'	52.54'	26.37'

REVISION NO.	DESCRIPTION	BY	DATE	APPROVED
1	STREET GRADE CHANGE	C.P.M.	5-13-75	[Signature]

CITY OF LAS VEGAS NEVADA
DEPARTMENT OF PUBLIC WORKS
SERVICES DIVISION

STEWART AVE.
28th to NELLIS BLVD.

W.D. NO. 7682	F.B.K. NO. 62-8X	DATE	DRAWING NO.
SC. (H) 1'-2"	SC. (V) 1'-2"	11/16/73	107-V819A
DES. G. Bluminger		DR. J. McDowell	FILE NO.
APPROVED BY DIRECTOR OF PUBLIC WORKS		10/25/74	107-V819A

16-4-93