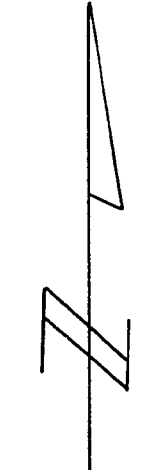
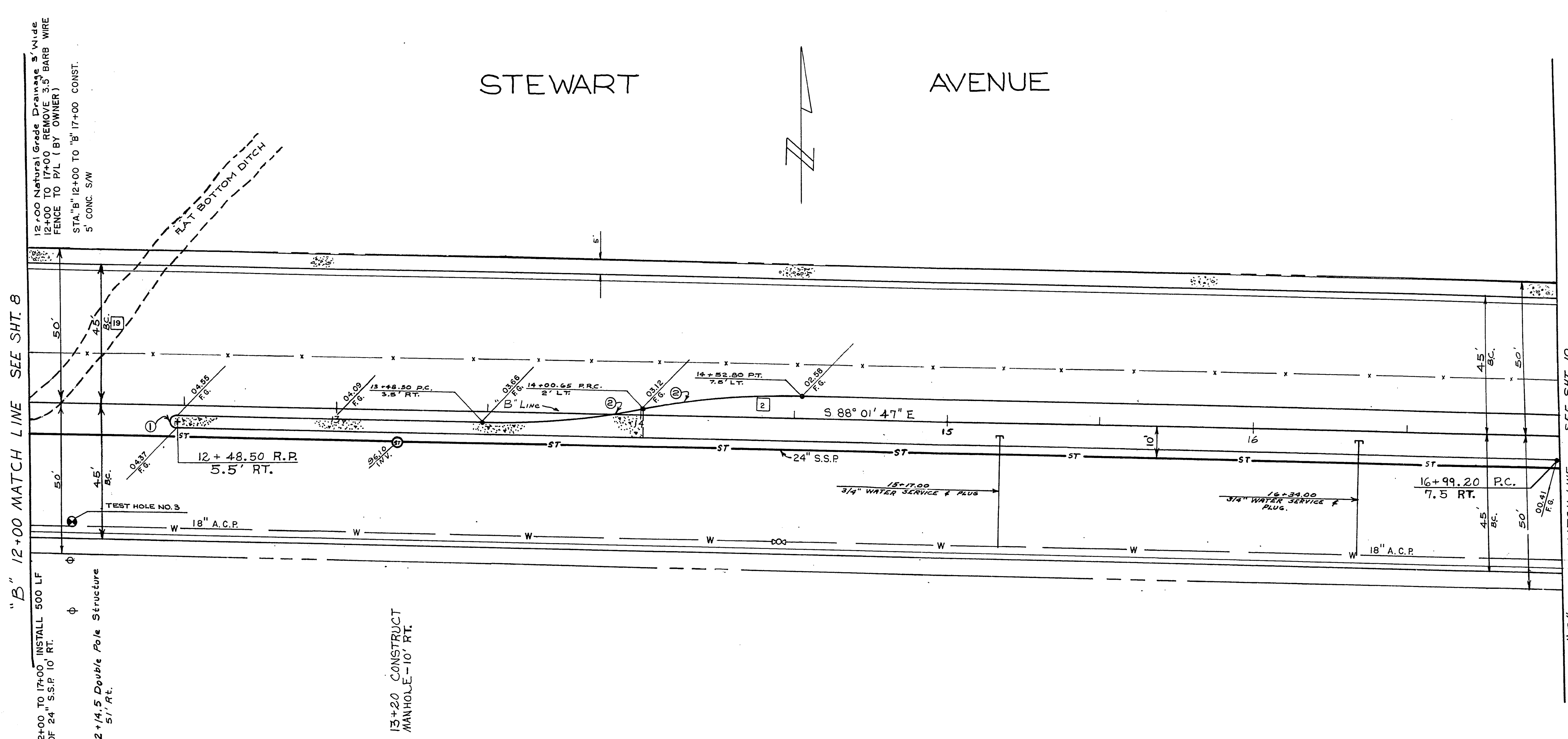


STEWART AVENUE



"B" 12+00 MATCH LINE SEE SHT. 8

"B" 17+00 MATCH LINE SEE SHT. 10

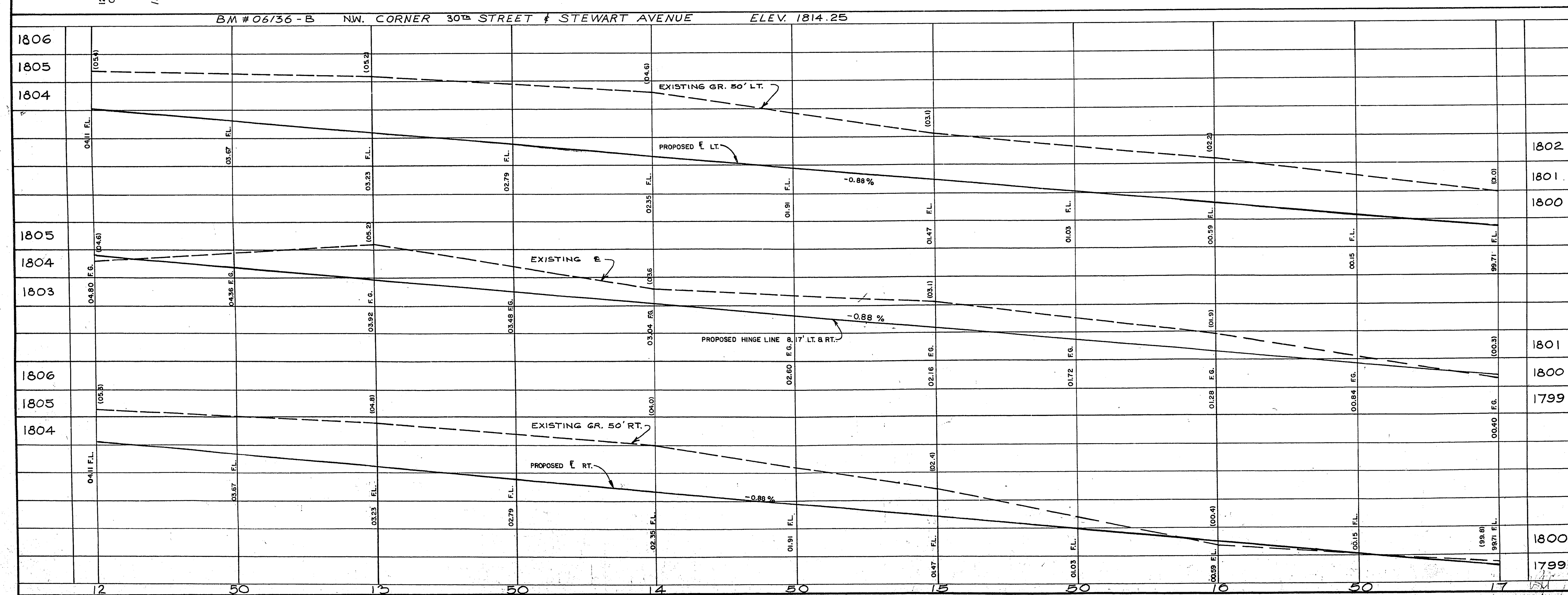


ITEM NO.	DESCRIPTION	QTY	CLV	P.54	S/D	TOTAL	LIMIT
104.500	24 IN. S.S.P.	1167		500		500	L.F.
302.500	LIME STABILIZED BASE	232		3889		3889	S.Y.
334.008	TYPE II GRAVEL BASE	207		551		551	C.Y.
334.010	4 IN. ASPHALT CONCRETE SINGLE LIFT	889		759		759	TONS
334.500	1/2 IN. OPEN-GRADED PLANT-MIX SUR	267		73		73	GAL.
334.800	BITUMINOUS PRIME COAT	1000		3254		3254	S.Y.
340.014	1 1/2 IN. A.C. ISLAND SURFACING	267		43		43	TONS
340.046	14" EXTRUDED "A" TYPE CURB	910		976		976	GAL.
340.148	5 IN. ISLAND CONCRETE	711		910		910	L.F.
512.600	STORM DRAIN MANHOLE	8		711		711	S.F.
201.100	EXCAVATION-UNCLASSIFIED	1063		2292		2292	C.Y.
560.190	3/4" ISLAND WATER SERVICE CONNECTION	1		0		0	C.Y.
340.114	CONST. 5 FT. CONC. SIDEWALK	2500		2		2	EA.

EXISTING UTILITIES ARE LOCATED ON THE PLANS OR THE CONVENIENCE OF THE CONTRACTOR ONLY THE CONTRACTOR SHALL BEAR FULL RESPONSIBILITY FOR PROTECTION OF UTILITIES AND THE CITY BEARS NO RESPONSIBILITY FOR UTILITIES NOT SHOWN ON THE PLANS OR NOT IN THE LOCATION SHOWN ON THE PLANS

CONTRACT DRAWING
NOV 8 1974

CURVE NO.	LOC.	DELTA	RADIUS	LENGTH	TANGENT
①	BC	180° 00' 00"	2.0'	6.28'	∞
②	BC	12° 02' 26"	250.0'	52.54'	26.37'



Test Hole No 3
"B" 12+14, 39' RT

5.0' CL Silty clay

REVISION NO.	DESCRIPTION	BY	DATE	APPROVED

CITY OF LAS VEGAS NEVADA
DEPARTMENT OF PUBLIC WORKS
SERVICES DIVISION

STEWART AVE.
28th to NELLIS BLVD.

W.O. NO. 7682	F.B.K. NO. 69-8X	DATE	DRAWING NO.
SC. (M) 1" = 20'	SC. (V) 1" = 2'	4/16/73	107-V819A
DES. G. B. ...		APPROVED BY DIRECTOR OF PUBLIC WORKS	FILE NO.
DR. J. MCDONALD		Lawrence Hampton	10/25/74

SHEET 9 OF 70