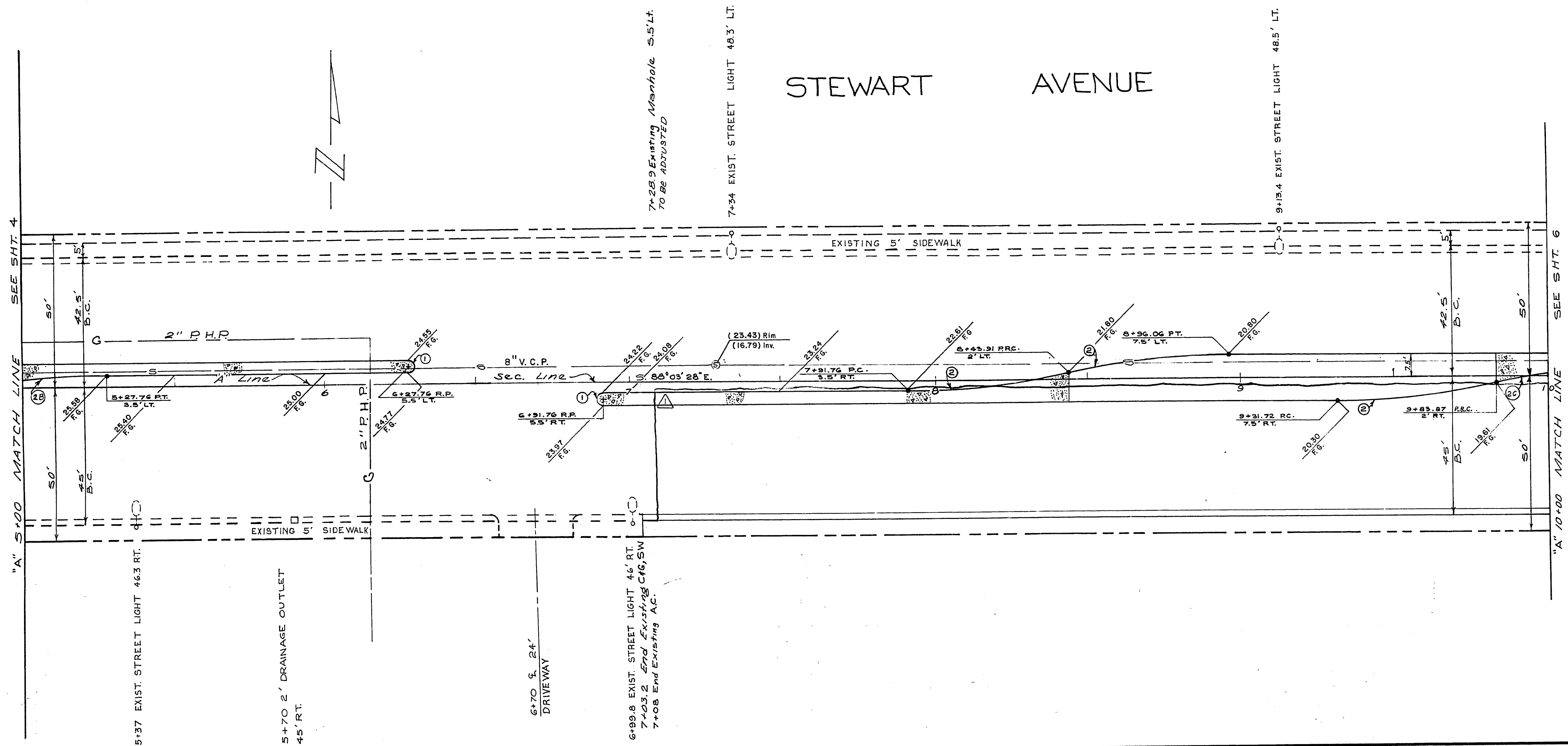


STEWART AVENUE



APPROXIMATE QUANTITIES THIS SHEET

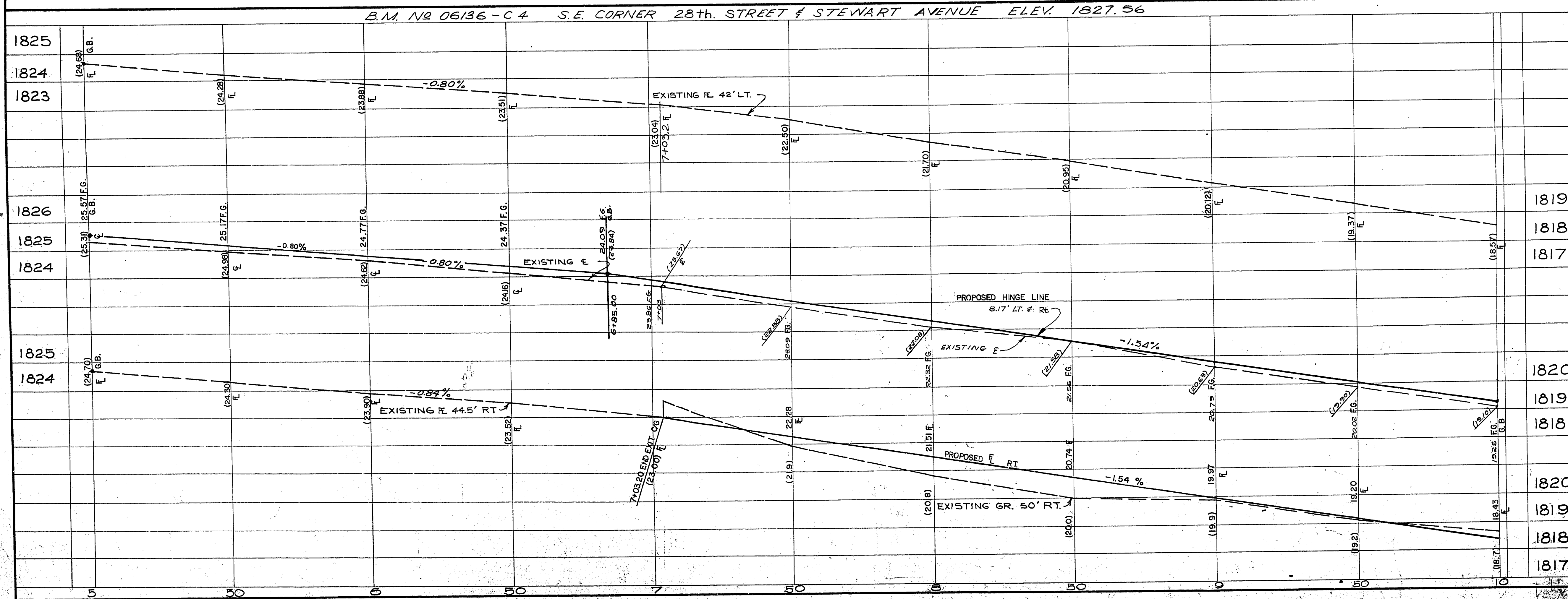
ITEM NO.	DESCRIPTION	CLV	RSH	S/D	TOTAL	UNIT
104.500	LIME STABILIZED BASE		4375	346	4721	S.Y.
302.200	TYPE II GRAVEL BASE		660	49	709	C.Y.
334.006	4 IN. ASPHALT CONCRETE 5/L	32	921	62	983	TONS
334.910	ISLAND ASPHALT COLORING		3948	264	4212	S.Y.
333.500	1/2 IN OPEN-GRADED PLANT-MIX SUR		19	19	38	TONS
334.403	1-1/2 IN AC ISLAND SURFACING		297	297	594	L.F.
340.014	L TYPE C.B.G. (24 IN WIDE)		886	886	1772	L.F.
340.016	14" EXTRUDED "A" TYPE CONC. CURB		1	1	2	E.A.
512.500	ADJUST SEWER MANHOLE		1207	79	1286	GALL.
334.800	BITUMINOUS PRIME COAT		807	22	829	C.Y.
201.100	EXCAVATION-UNCLASSIFIED		109	50	159	C.Y.
	FILL		1376		1376	S.F.
340.145	5 IN. ISLAND CONCRETE					

EXISTING UTILITIES ARE LOCATED ON THE PLANS FOR THE CONVENIENCE OF THE CONTRACTOR ONLY. THE CONTRACTOR SHALL BEAR FULL RESPONSIBILITY FOR PROTECTION OF UTILITIES AND THE CITY BEARS NO RESPONSIBILITY FOR UTILITIES NOT SHOWN ON THE PLANS OR NOT IN THE LOCATION SHOWN ON THE PLANS.

CONTRACT DRAWING NOV. 8 1974

CURVE DATA

CURVE NO.	LOC.	DELTA	RADIUS	LENGTH	TANGENT
1	BC	180° 00' 00"	2.00'	6.28'	∞
2	BC	12° 02' 26"	250.00'	52.54'	26.37'
3	BC	06° 22' 31"	250.00'	27.82'	13.92'
4	BC	03° 45' 24"	250.00'	16.39'	8.20'



William J. Hampton
 10/17/74

REVISION NO.	DESCRIPTION	BY	DATE	APPROVED
	REVISION			

CITY OF LAS VEGAS NEVADA
 DEPARTMENT OF PUBLIC WORKS
 SERVICES DIVISION

STEWART AVE.
 28th to NELLIS BLVD.

W.D. NO. 7682	F.B.K. NO. 69-87	DATE	DRAWING NO.
SC. (H) 1" = 20'	SC. (V) 1" = 3'	11/16/73	
DES. G. B. Higgins / J. P. Malone			
DR. J. McDowell / H. Zimmerman			
APPROVED BY DIRECTOR OF PUBLIC WORKS			
James Hampton		10/25/74	FILE NO. 107-V819A
			SHEET 5 OF 70

16-4-90