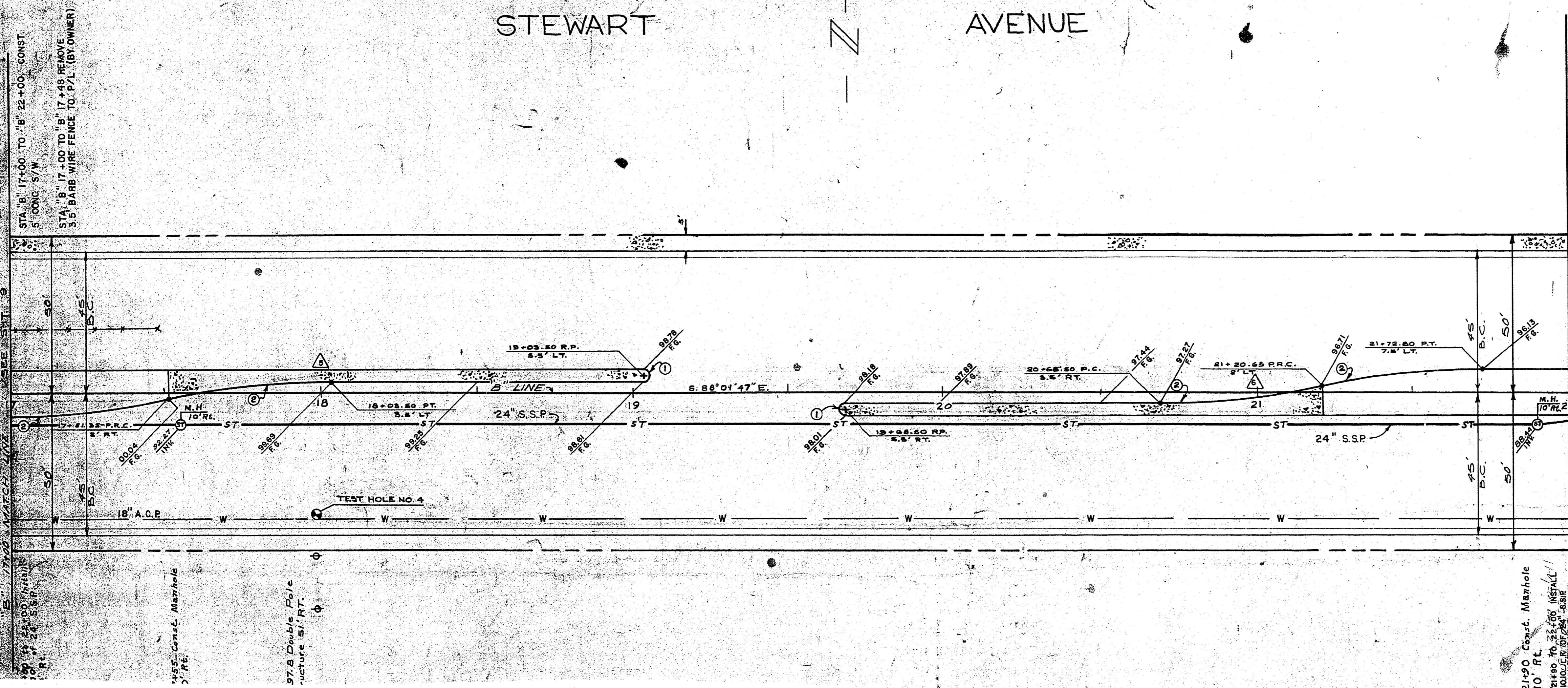


STEWART AVENUE



APPROXIMATE QUANTITIES THIS SHEET

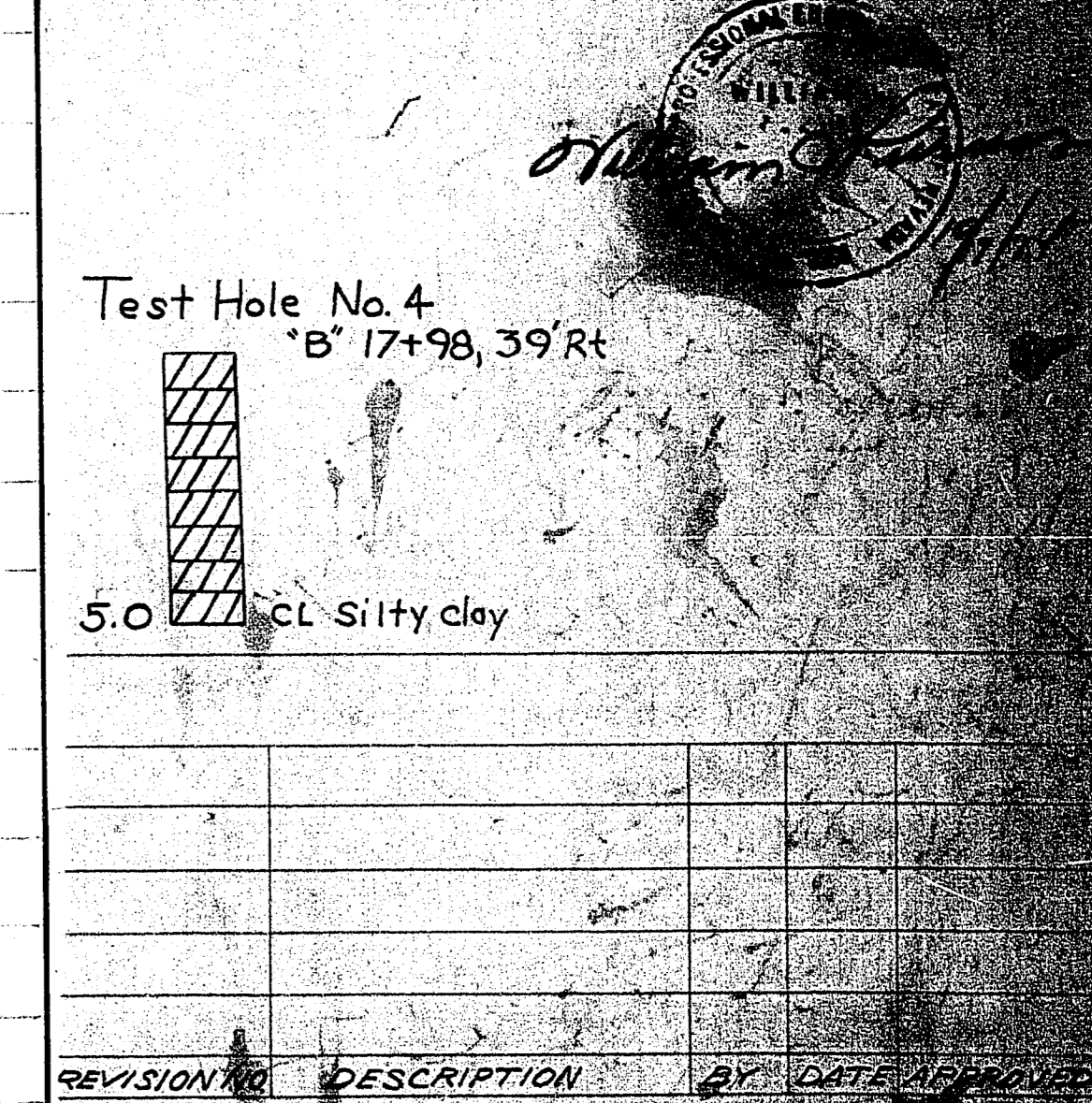
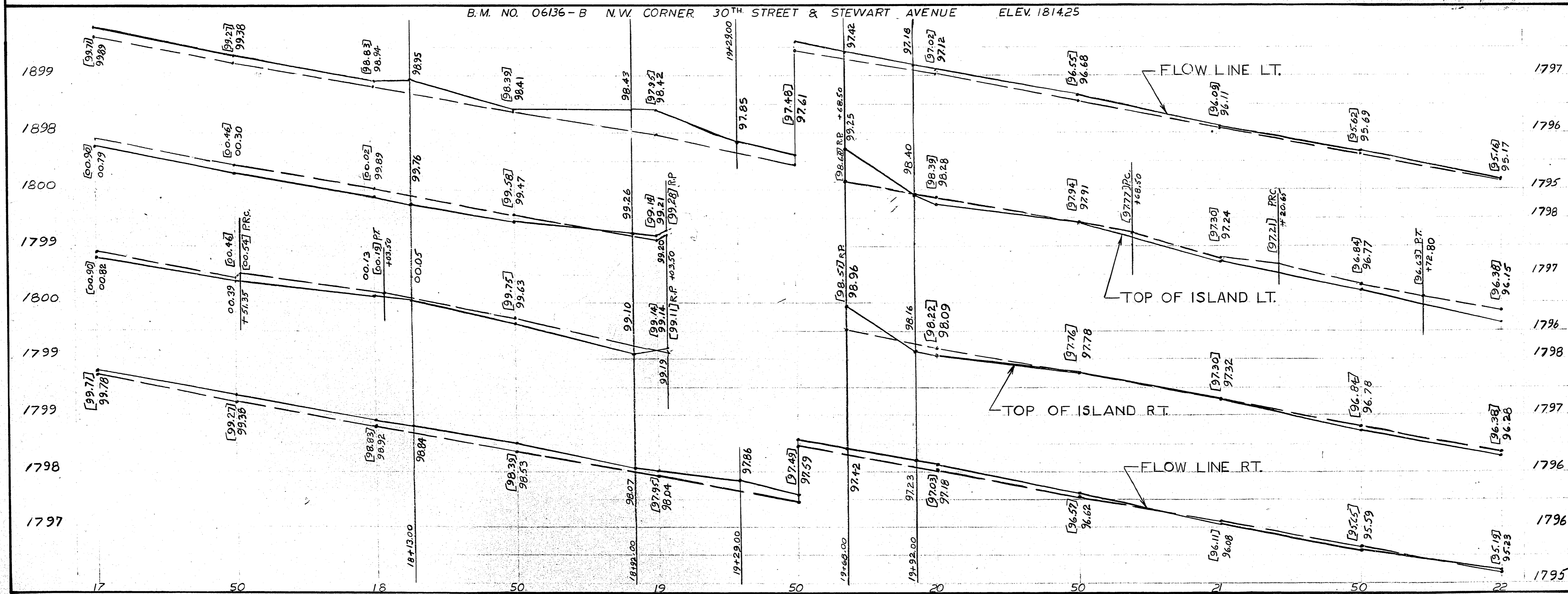
ITEM NO.	DESCRIPTION	QTY	CLV	BSH	S/D	TOTAL	UNIT
104.500	24 IN. S.S.P.	1167		500		500	LF
302.200	LIME STABILIZED BASE	232		3889		3889	SY
334.008	TYPE II GRAVEL BASE	207		493		493	C.Y.
334.008	4 IN. ASPHALTIC CONCRETE SINGLE LIFT	207		809		809	TONS
334.008	ISLAND ASPHALT COLORING	30		30		30	GAL
333.500	1/2 IN. OPEN-GRADED PLANT-MIX SUR	889		3467		4356	SY
334.800	1-1/2 IN. A.C. ISLAND SURFACING	287		1040		1307	GAL
340.004	BITUMINOUS PRIME COAT	1000		886		1000	LF
340.004	14 IN. EXTRUDED "A" TYPE CURB (24 IN. WIDE)	886		1421		1421	LF
340.145	5 IN. ISLAND CONCRETE	1421		15		15	SF
340.145	STORM DRAIN MANHOLE	1126		2476		3602	C.Y.
340.145	EXCAVATION UNCLASSIFIED	0		0		0	C.Y.
340.145	FILL	2500		0		2500	C.Y.
340.145	CONC. 5 FT. CONC. SIDEWALK						S.F.

EXISTING UTILITIES ARE LOCATED ON THE PLANS FOR THE CONVENIENCE OF THE CONTRACTOR ONLY. THE CONTRACTOR SHALL BEAR FULL RESPONSIBILITY FOR PROTECTION OF UTILITIES AND THE CITY BEARS NO RESPONSIBILITY FOR UTILITIES NOT SHOWN ON THE PLANS OR NOT IN THE LOCATION SHOWN ON THE PLANS.

CONTRACT DRAWING
NOV 8 1976

CURVE DATA

CURVE NO.	LOC.	DELTA	RADIUS	LENGTH	TANGENT
①	B.C.	180°00'00"	2.0'	6.28'	3.0'
②	B.C.	12°02'26"	250.0'	52.34'	26.0'



REVISION NO. DESCRIPTION BY DATE APPROVED

CITY OF LAS VEGAS NEVADA
DEPARTMENT OF PUBLIC WORKS
SERVICES DIVISION

STEWART AVE
28th to NELLIS BLVD.

W.D. NO. 7652 E.B. NO. 29-24 DATE: 11/16/76 DRAWING NO. 1116/3
SC. (H) 17+22 P.C. NO. 17+22
DES. BY: [Signature] C.E. [Signature] 11/16/76
DR. BY: [Signature] 11/16/76
APPROVED BY: DIRECTOR, DEPARTMENT OF PUBLIC WORKS [Signature]

ASPECT

