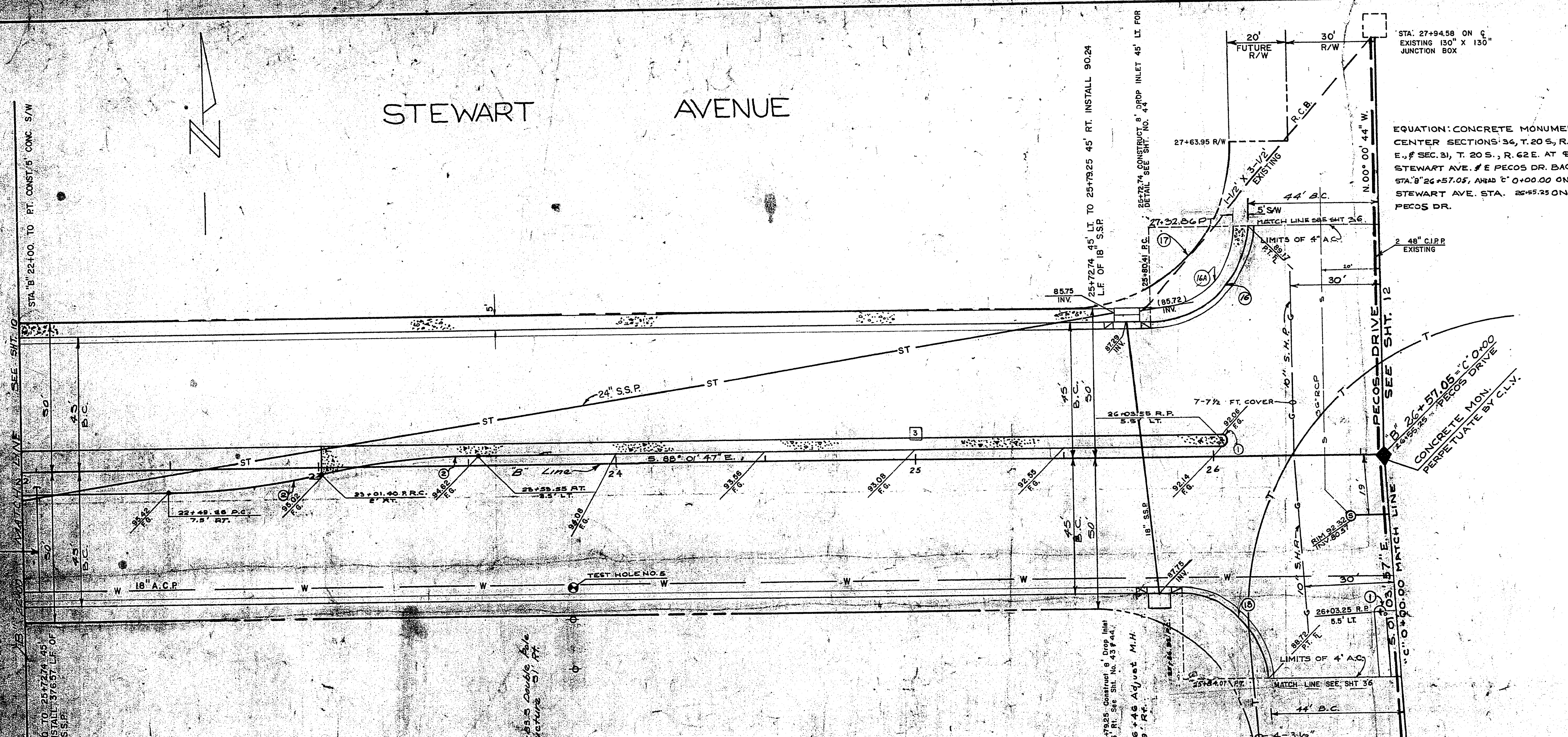


STEWART AVENUE



APPROXIMATE QUANTITIES THIS SHEET

ITEM NO	DESCRIPTION	21510 CLV	25H S/D	TOTAL	UNIT
18 IN. S.S.P.			90	90	L.F.
24 IN. S.S.P.			377	377	L.F.
LIME STABILIZED BASE		859	4093	4952	S.Y.
TYPE II GRAVEL		280	303	783	C.Y.
302.200 TYPE CONC. CURB			850	859	L.F.
340.000 4 IN. ASPHALT CONCRETE SINGLE LIFT			159	1009	TONS
334.000 1/2 IN. OPEN-GRADED PLANT-MIX SUR			24	4325	S.Y.
335.500 1/2 IN. AC ISLAND SURFACING			682	14	TONS
334.503 BITUMINOUS PRIME COAT			205	1298	GAL.
340.014 L TYPE C&G (24 IN WIDE)			94	831	L.F.
340.014 CONST. 5 FT. CONC. SIDEWALK			2086	2086	S.F.
340.445 6 IN. ISLAND CONCRETE			1394	1394	S.F.
500.000 DROPPED INLET			2	2	E.A.
500.000 ADJUST. SEWER MANHOLE			1	1	E.A.
650.000 3/4 ISLAND WATER SERVICE CONNECTION			1	1	E.A.
			2802	2802	D.
			354	354	D.

CONTRACT DRAWING NOV. 9, 1974

CURVE DATA

CURVE NO.	LOC.	DELTA	RADIUS	LENGTH	TANGENT
1	B.C.	180° 00' 00"	20'	6.28	0.00
2	B.C.	12° 02' 00"	250.0'	52.5'	0.00
16	B.C.	91° 58' 57"	30.0'	48.10	0.00
17	R/W	91° 58' 57"	55.0'	88.30	0.00
18	B.C.	86° 57' 50"	300'	45.93	0.00
19	P.L.	86° 57' 50"	55.0'	83.43	52.11
20	B.S.W.	91° 58' 57"	25.00'	10.13	25.50

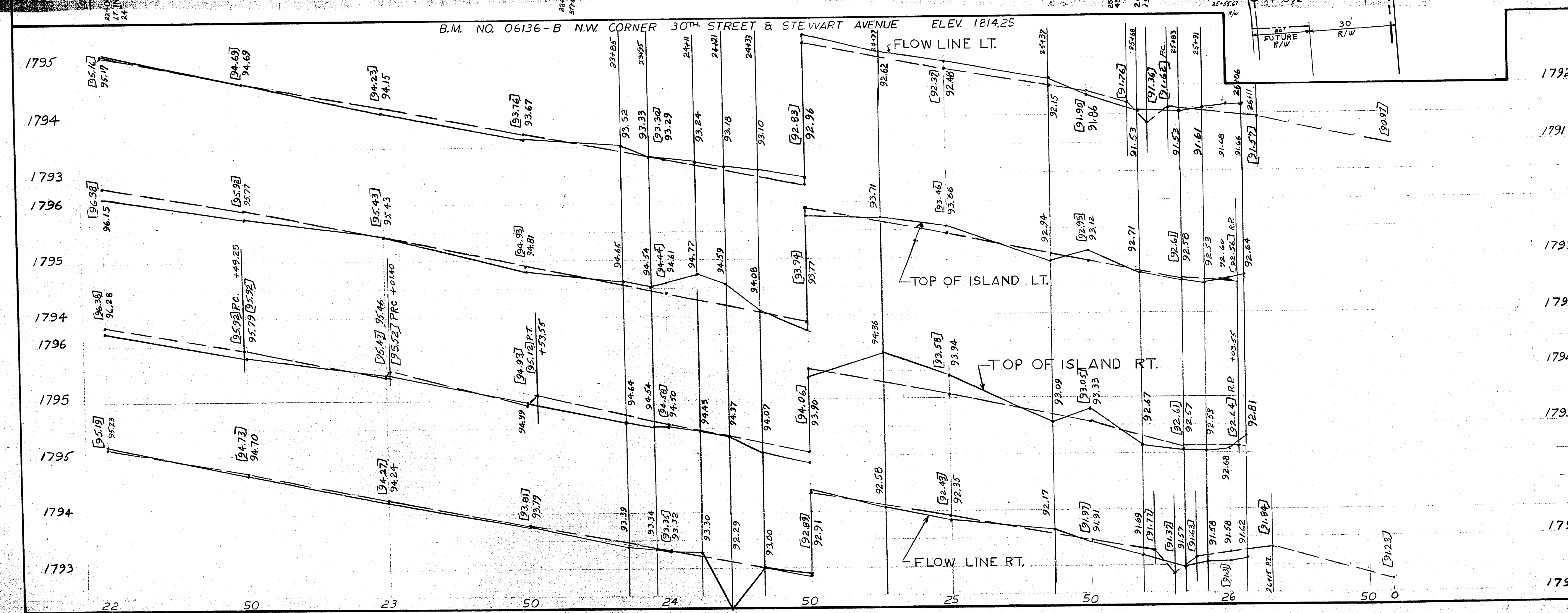
Test Hole No 5
 B' 23+84.41 RT
 10/17/74
 CL silty clay
 5.0' CL silty clay wet

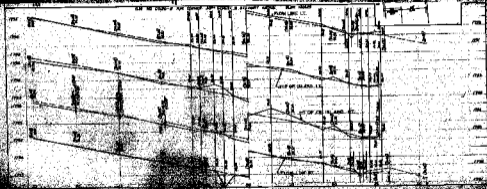
REVISION NO.	DESCRIPTION	BY	DATE	APPROVED

CITY OF LAS VEGAS, NEVADA
 DEPARTMENT OF PUBLIC WORKS
 SERVICES DIVISION

STEWART AVE
 28th to NELLIS BLVD

DATE: 10/17/74
 SHEET 1 OF 70





APPROXIMATE DIMENSIONS ONLY (INCHES)

NO.	DESCRIPTION	LENGTH	WIDTH	THICKNESS
1				
2				
3				
4				
5				
6				
7				
8				
9				
10				
11				
12				
13				
14				
15				
16				
17				
18				
19				
20				
21				
22				
23				
24				
25				
26				
27				
28				
29				
30				
31				
32				
33				
34				
35				
36				
37				
38				
39				
40				
41				
42				
43				
44				
45				
46				
47				
48				
49				
50				
51				
52				
53				
54				
55				
56				
57				
58				
59				
60				
61				
62				
63				
64				
65				
66				
67				
68				
69				
70				
71				
72				
73				
74				
75				
76				
77				
78				
79				
80				
81				
82				
83				
84				
85				
86				
87				
88				
89				
90				
91				
92				
93				
94				
95				
96				
97				
98				
99				
100				

THESE DIMENSIONS ARE APPROXIMATE AND SHOULD BE CHECKED AGAINST THE ORIGINAL DRAWING. THE DIMENSIONS OF THE PLATING AND STIFFENERS SHOULD BE CHECKED AGAINST THE ORIGINAL DRAWING. THE DIMENSIONS OF THE RIBS SHOULD BE CHECKED AGAINST THE ORIGINAL DRAWING. THE DIMENSIONS OF THE OTHER PARTS SHOULD BE CHECKED AGAINST THE ORIGINAL DRAWING.