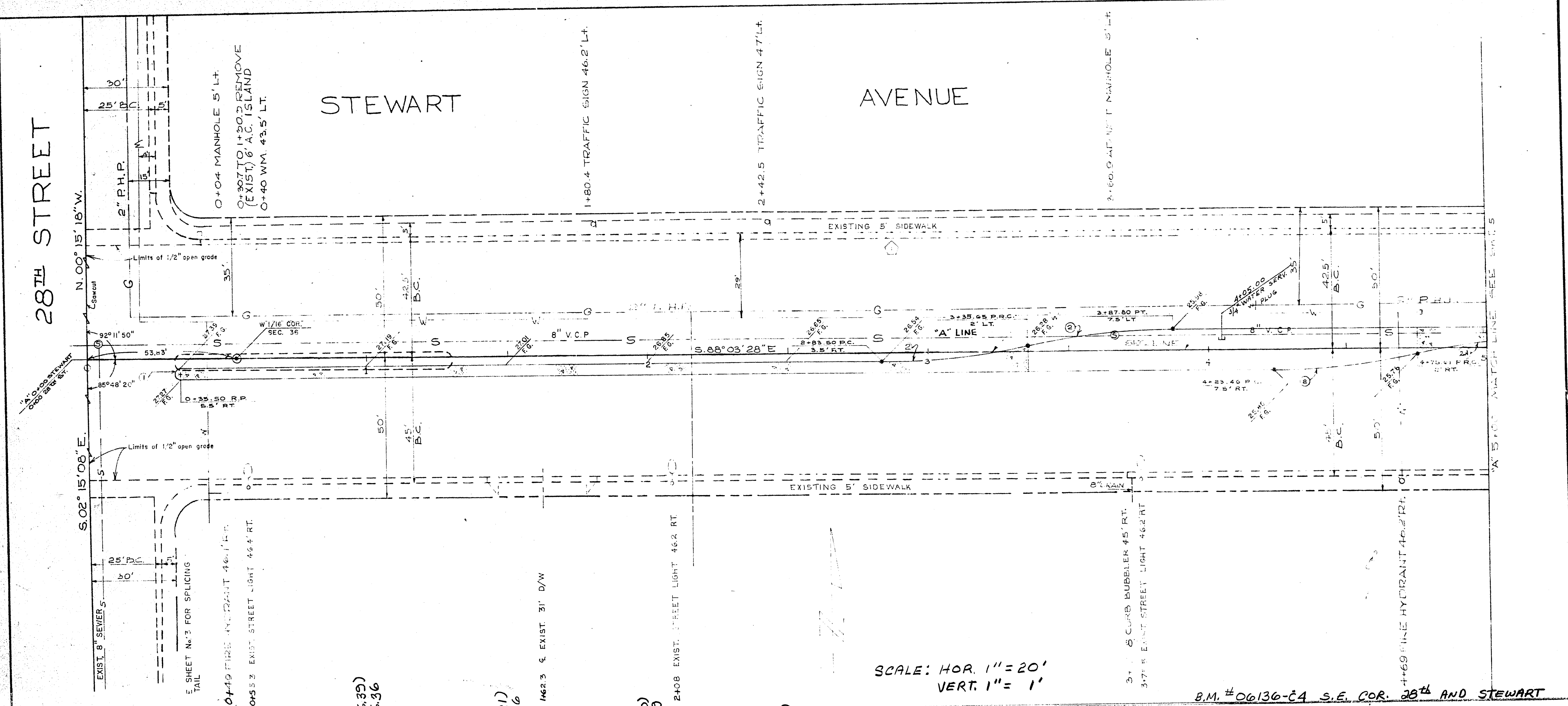


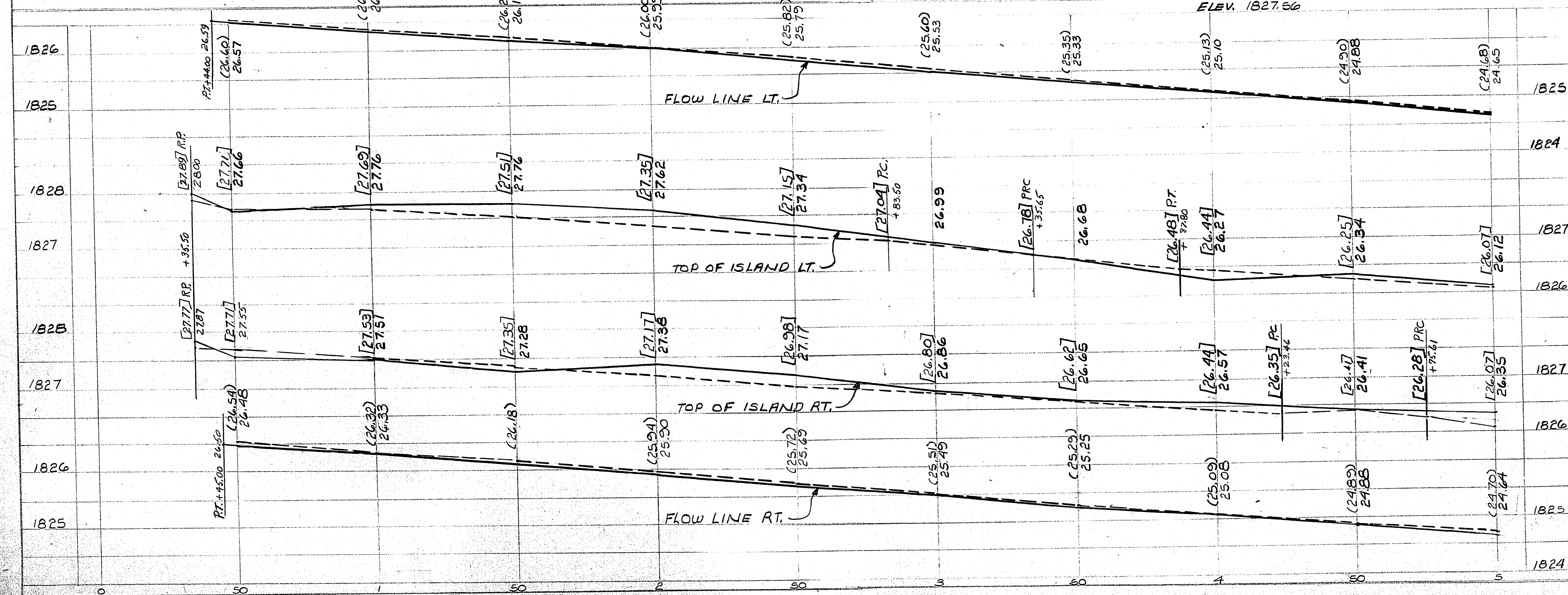
28<sup>TH</sup> STREET

STEWART AVENUE



SCALE: HOR. 1" = 20'  
VERT. 1" = 1'

B.M. #06136-CA S.E. COR. 28<sup>TH</sup> AND STEWART  
ELEV. 1827.56



APPROXIMATE QUANTITIES THIS SHEET

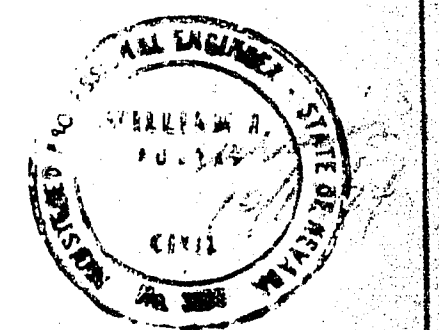
ITEM NO.	DESCRIPTION	CLV	RSW	S/D	TOTAL	UNIT
2-11002	REMOVE ISLAND A/C PAYMENT		596		596	S.F.
104-500	LIME STABILIZED BASE		4602		4602	S.Y.
302-200	TYPE II GRAVEL BASE		656		656	C.Y.
264-100	1/2" OPEN GRADED PLANT-MIX SURFING	32	217		417	GAL.
334-503	1/2" IN A/C ISLAND SURFING		1394		1394	TONS
334-800	BITUMINOUS PRIME COAT		1472		1472	EA.
512-500	ADJUST SEWER MANHOLE		983		983	TONS
340-145	5 IN. ISLAND CONCRETE		937		937	L.F.
500-100	3/4 IN. ISLAND WATER SERVICE CONNECTION					
334-008	4" ASPHALTIC CONCRETE					
340-040E	14 IN. EXTRUDED A TYPE CONC. CURB					
201-100	EXCAVATION-UNCLASSIFIED		875		875	C.Y.
	CUT					
	FILL					

CONTRACT DRAWING  
NOV 8 1974

CURVE DATA

UR. NO.	DELTA	RADIUS	LENGTH	TANGENT
1	180°00'00"	20.0'	6.28'	∞
2	12°02'26"	250.0'	52.54'	26.37'
3	05°39'55"	250.00'	24.72'	12.37'

W.O. 2103



REVISION NO.	DESCRIPTION	BY	DATE	APPROVED
CITY OF LAS VEGAS NEVADA DEPARTMENT OF PUBLIC WORKS SERVICES DIVISION				
STEWART AVE. 28 <sup>TH</sup> to NELLIS BLVD.				
W.O. NO. 7682	F.B.K. NO. 69-82	DATE	DRAWING NO.	
SC. (H) 1" = 20'	SC. (V) 1" = 2'	11/16/73		
DES. G. B. Mangelor, Chief P. Engineer		FILE NO.		
DR. W. McDowell		107-V819A-2		
APPROVED BY DIRECTOR OF PUBLIC WORKS		SHEET 4 OF 70		

164-140