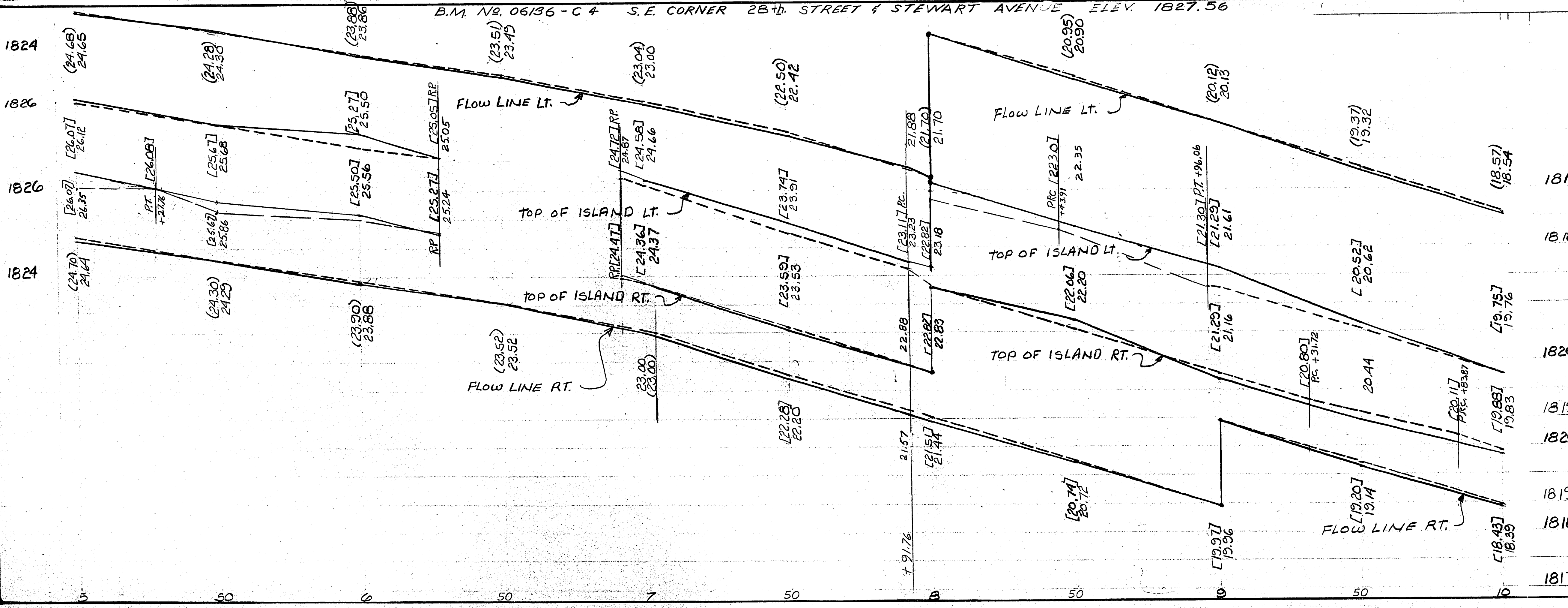
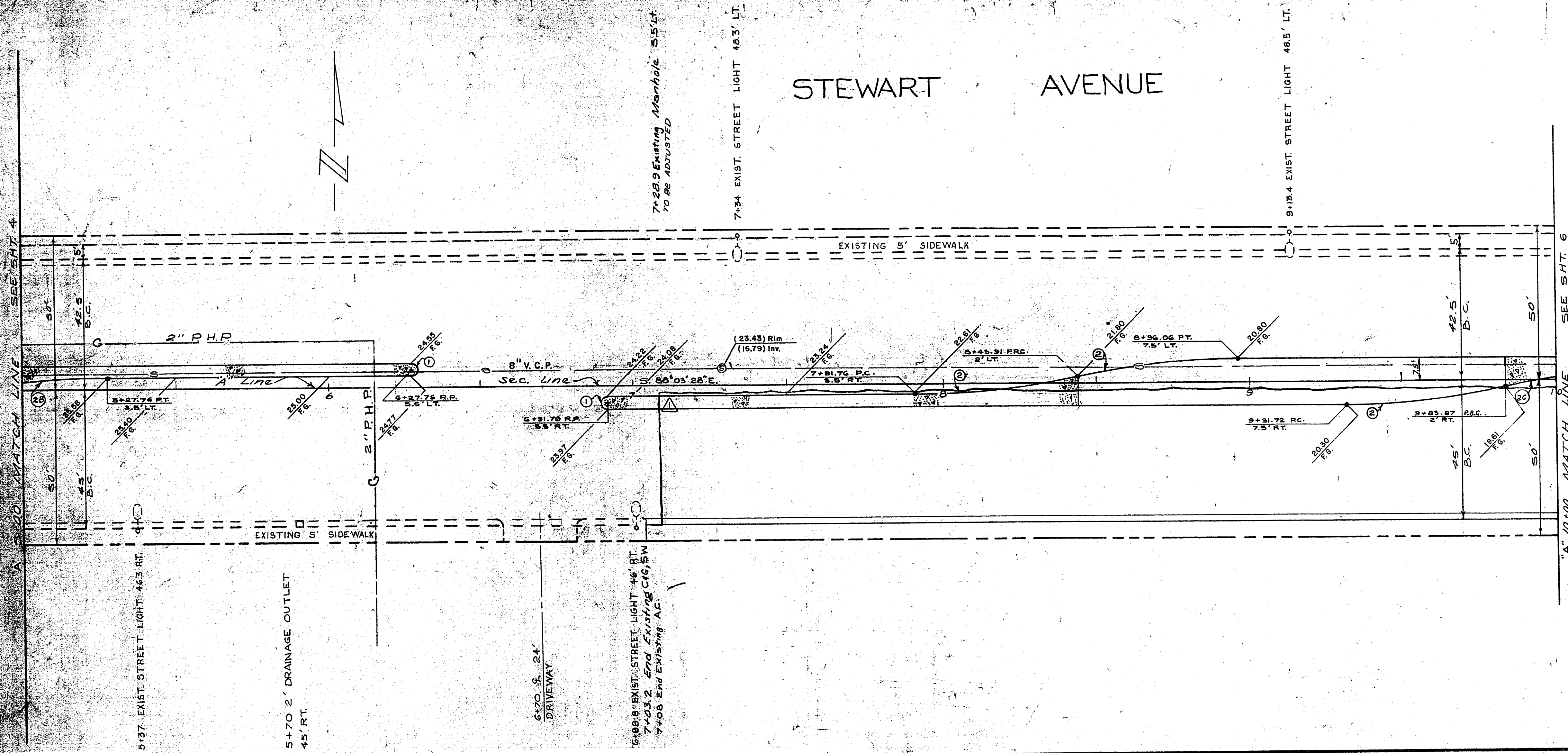


STEWART AVENUE



APPROXIMATE QUANTITIES THIS SHEET

ITEM NO.	DESCRIPTION	CLV	RSH	SID	TOTAL UNIT
104.500	LIME STABILIZED BASE		4375	346	4721 S.Y.
302.200	TYPE II GRAVEL BASE		660	49	709 C.Y.
334.000	4 IN. ASPHALT CONCRETE 5/L		921	62	983 TONS
334.910	ISLAND ASPHALT COLORING	32			32 GALS.
333.500	1/2 IN. OPEN-GRADED PLANT-MIX SUR		3948	264	4212 S.K.
334.503	1-1/2 IN. AC ISLAND SURFACING		19		19 TONS
340.014	L TYPE C & G (24 IN WIDE)		886	297	297 L.F.
340.040E	14" EXTRUDED "M" TYPE CONC. CURB				886 L.F.
512.500	ADJUST SEWER MANHOLE		1207	79	1286 GAL.
334.800	BITUMINOUS PRIME COAT		807	22	829 C.Y.
201.100	EXCAVATION-UNCLASSIFIED		109	30	139 C.Y.
	CUT				
	FILL				
340.145	5 IN. ISLAND CONCRETE		1376		1376 S.F.

EXISTING UTILITIES ARE LOCATED ON THE PLANS FOR THE CONVENIENCE OF THE CONTRACTOR ONLY. THE CONTRACTOR SHALL BEAR FULL RESPONSIBILITY FOR PROTECTION OF UTILITIES AND THE CITY BEARS NO RESPONSIBILITY FOR UTILITIES NOT SHOWN ON THE PLANS OR NOT IN THE LOCATION SHOWN ON THE PLANS.

CONTRACT DRAWING
NOV. 8 1974

CURVE DATA

CURVE NO.	LOC.	DELTA	RADIUS	LENGTH	TANGENT
1	BC	180° 00' 00"	2.00'	6.28'	
2	BC	12° 02' 26"	250.00'	52.54'	26.37'
3	BC	06° 22' 31"	250.00'	27.82'	13.92'
4	BC	03° 45' 24"	250.00'	16.39'	8.20'

William J. ...
10/7/74

REVISION NO. DESCRIPTION BY DATE APPROVED

1819

1820

1819

1818

1817

CITY OF LAS VEGAS, NEVADA
DEPARTMENT OF PUBLIC WORKS
SERVICES DIVISION

STEWART AVE
28th to NELLIS BLVD

W.O. NO. 0682 DATE 11/16/73 DRAWING NO. 07-V819A-2
SC. (M) 1/2" = 1' FILE NO. 107-143
DES. G. ...
DR. ...