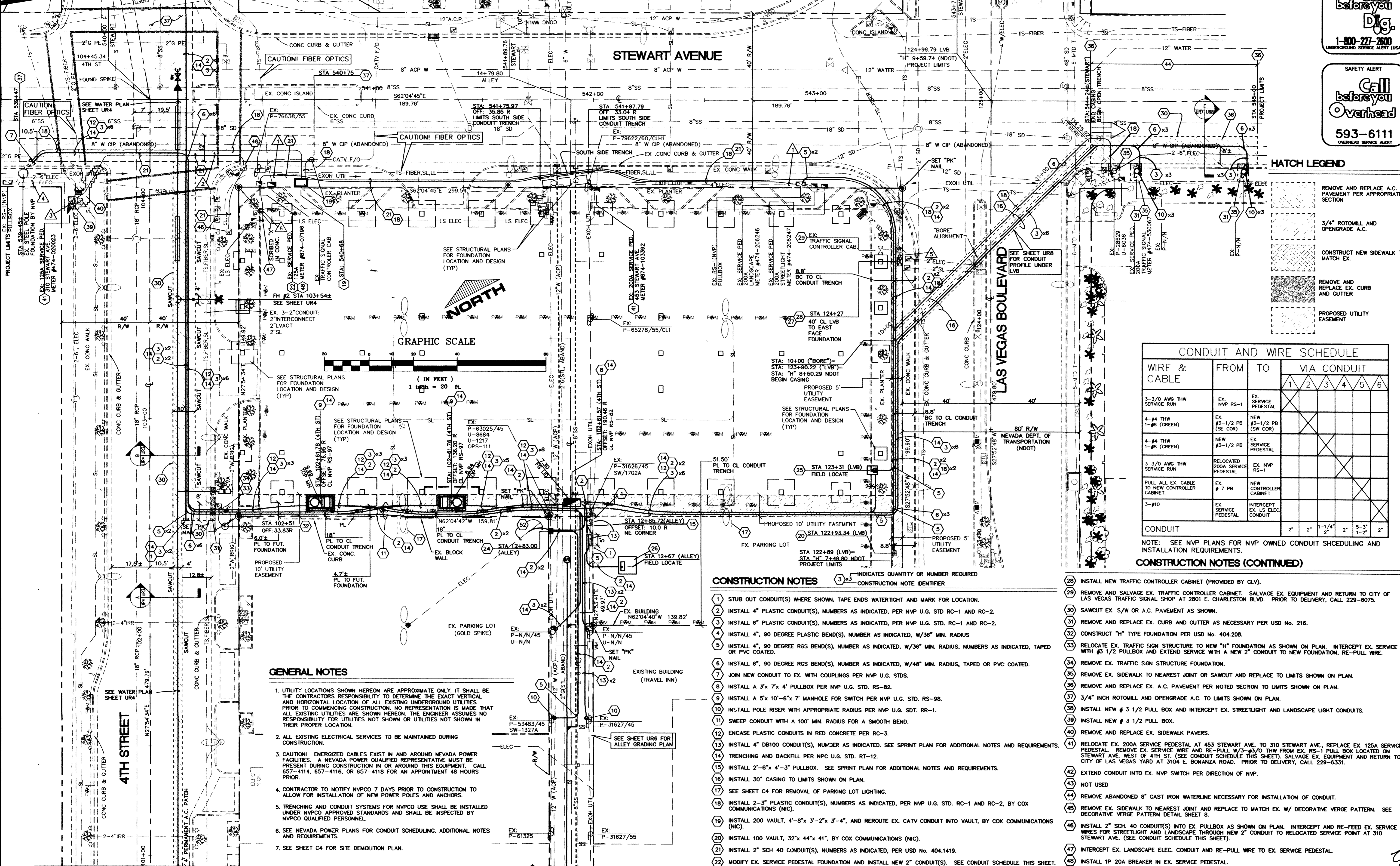


SEE SHEET UR8  
MATCHLINE STA 105+00



AVOID CUTTING UNDERGROUND UTILITY LINES. IT'S COSTLY.  
**Call before you Dig.**  
1-800-777-2600  
UNDERGROUND SERVICE ALERT (USA)

SAFETY ALERT  
**Call before you Overhead**  
593-6111  
OVERHEAD SERVICE ALERT

**HATCH LEGEND**

[Hatch Pattern]	REMOVE AND REPLACE A.C. PAVEMENT PER APPROPRIATE SECTION
[Hatch Pattern]	3/4" ROTOMILL AND OPENGRADE A.C.
[Hatch Pattern]	CONSTRUCT NEW SIDEWALK TO MATCH EX.
[Hatch Pattern]	REMOVE AND REPLACE EX. CURB AND GUTTER
[Hatch Pattern]	PROPOSED UTILITY EASEMENT

**CONDUIT AND WIRE SCHEDULE**

WIRE & CABLE	FROM	TO	VIA CONDUIT							
			1	2	3	4	5	6		
3-3/0 AWG THW SERVICE RUN	EX. NVP RS-1	EX. SERVICE PEDESTAL								
4-#4 THW 1-#8 (GREEN)	EX. #3-1/2 PB (SE COR)	NEW #3-1/2 PB (SW COR)								
4-#4 THW 1-#8 (GREEN)	NEW #3-1/2 PB	EX. SERVICE PEDESTAL								
3-3/0 AWG THW SERVICE RUN	RELOCATED 200A SERVICE PEDESTAL	EX. NVP RS-1								
PULL ALL EX. CABLE TO NEW CONTROLLER CABINET	EX. # 7 PB	NEW CONTROLLER CABINET								
3-#10	EX. SERVICE PEDESTAL	INTERCEPT EX. LS ELEC CONDUIT								
CONDUIT			2"	2"	1-1/4"	2"	5-3"	1-2"	2"	

NOTE: SEE NVP PLANS FOR NVP OWNED CONDUIT SCHEDULING AND INSTALLATION REQUIREMENTS.  
**CONSTRUCTION NOTES (CONTINUED)**

- GENERAL NOTES**
- UTILITY LOCATIONS SHOWN HEREON ARE APPROXIMATE ONLY. IT SHALL BE THE CONTRACTOR'S RESPONSIBILITY TO DETERMINE THE EXACT VERTICAL AND HORIZONTAL LOCATION OF ALL EXISTING UNDERGROUND UTILITIES PRIOR TO COMMENCING CONSTRUCTION. NO REPRESENTATION IS MADE THAT ALL EXISTING UTILITIES ARE SHOWN HEREON. THE ENGINEER ASSUMES NO RESPONSIBILITY FOR UTILITIES NOT SHOWN OR UTILITIES NOT SHOWN IN THEIR PROPER LOCATION.
  - ALL EXISTING ELECTRICAL SERVICES TO BE MAINTAINED DURING CONSTRUCTION.
  - CAUTION! ENERGIZED CABLES EXIST IN AND AROUND NEVADA POWER FACILITIES. A NEVADA POWER QUALIFIED REPRESENTATIVE MUST BE PRESENT DURING CONSTRUCTION IN OR AROUND THIS EQUIPMENT. CALL 657-4114, 657-4116, OR 657-4118 FOR AN APPOINTMENT 48 HOURS PRIOR.
  - CONTRACTOR TO NOTIFY NVPCO 7 DAYS PRIOR TO CONSTRUCTION TO ALLOW FOR INSTALLATION OF NEW POWER POLES AND ANCHORS.
  - TRENCHING AND CONDUIT SYSTEMS FOR NVPCO USE SHALL BE INSTALLED UNDER NVPCO APPROVED STANDARDS AND SHALL BE INSPECTED BY NVPCO QUALIFIED PERSONNEL.
  - SEE NEVADA POWER PLANS FOR CONDUIT SCHEDULING, ADDITIONAL NOTES AND REQUIREMENTS.
  - SEE SHEET C4 FOR SITE DEMOLITION PLAN.

- CONSTRUCTION NOTES**
- STUB OUT CONDUIT(S) WHERE SHOWN, TAPE ENDS WATER TIGHT AND MARK FOR LOCATION.
  - INSTALL 4" PLASTIC CONDUIT(S), NUMBERS AS INDICATED, PER NVP U.G. STD. RC-1 AND RC-2.
  - INSTALL 6" PLASTIC CONDUIT(S), NUMBERS AS INDICATED, PER NVP U.G. STD. RC-1 AND RC-2.
  - INSTALL 4", 90 DEGREE PLASTIC BEND(S), NUMBER AS INDICATED, W/36" MIN. RADIUS.
  - INSTALL 4", 90 DEGREE RGS BEND(S), NUMBER AS INDICATED, W/36" MIN. RADIUS, TAPED OR PVC COATED.
  - INSTALL 6", 90 DEGREE RGS BEND(S), NUMBER AS INDICATED, W/48" MIN. RADIUS, TAPED OR PVC COATED.
  - JOIN NEW CONDUIT TO EX. WITH COUPLINGS PER NVP U.G. STDS.
  - INSTALL A 3'x 7'x 4" PULLBOX PER NVP U.G. STD. RS-82.
  - INSTALL A 5'x 10'-6"x 7" MANHOLE FOR SWITCH PER NVP U.G. STD. RS-98.
  - INSTALL POLE RISER WITH APPROPRIATE RADIUS PER NVP U.G. STD. RR-1.
  - SWEEP CONDUIT WITH A 100' MIN. RADIUS FOR A SMOOTH BEND.
  - ENCASE PLASTIC CONDUITS IN RED CONCRETE PER RC-3.
  - INSTALL 4" DB100 CONDUIT(S), NUMBER AS INDICATED. SEE SPRINT PLAN FOR ADDITIONAL NOTES AND REQUIREMENTS.
  - TRENCHING AND BACKFILL PER NPC U.G. STD. RT-12.
  - INSTALL 2'-6"x 4'-3" PULLBOX. SEE SPRINT PLAN FOR ADDITIONAL NOTES AND REQUIREMENTS.
  - INSTALL 30" CASING TO LIMITS SHOWN ON PLAN.
  - SEE SHEET C4 FOR REMOVAL OF PARKING LOT LIGHTING.
  - INSTALL 2-3" PLASTIC CONDUIT(S), NUMBERS AS INDICATED, PER NVP U.G. STD. RC-1 AND RC-2, BY COX COMMUNICATIONS (NIC).
  - INSTALL 200 VAULT, 4'-8"x 3'-2"x 3'-4", AND REROUTE EX. CATV CONDUIT INTO VAULT, BY COX COMMUNICATIONS (NIC).
  - INSTALL 100 VAULT, 32"x 44"x 41", BY COX COMMUNICATIONS (NIC).
  - INSTALL 2" SCH 40 CONDUIT(S), NUMBERS AS INDICATED, PER USD No. 404.1419.
  - MODIFY EX. SERVICE PEDESTAL FOUNDATION AND INSTALL NEW 2" CONDUIT(S). SEE CONDUIT SCHEDULE THIS SHEET.
  - NOT USED
  - INSTALL 17"x 30" HANDHOLE PER NPC U.G. STD. RS-1.
  - INSTALL SINGLE-PHASE TRANSFORMER PAD PER NPC RSM 13 W/ VEH. PROTECTION BARRIERS PER RS 6.
  - INSTALL THREE-PHASE TRANSFORMER PAD PER NPC RSM 35 W/ VEH. PROTECTION BARRIERS PER RS 6.
  - CONSTRUCT TYPE "J" FOUNDATION FOR PER USD No. 404.231. REROUTE EX. CONDUIT FROM EX. # 7 TRAFFIC PULL BOX AND STUB OUT INTO NEW FOUNDATION.

- INSTALL NEW TRAFFIC CONTROLLER CABINET (PROVIDED BY CLV).
- REMOVE AND SALVAGE EX. TRAFFIC CONTROLLER CABINET. SALVAGE EX. EQUIPMENT AND RETURN TO CITY OF LAS VEGAS TRAFFIC SIGNAL SHOP AT 2801 E. CHARLESTON BLVD. PRIOR TO DELIVERY, CALL 229-6075.
- SAWCUT EX. S/W OR A.C. PAVEMENT AS SHOWN.
- REMOVE AND REPLACE EX. CURB AND GUTTER AS NECESSARY PER USD No. 216.
- CONSTRUCT "H" TYPE FOUNDATION PER USD No. 404.208.
- RELOCATE EX. TRAFFIC SIGN STRUCTURE TO NEW "H" FOUNDATION AS SHOWN ON PLAN. INTERCEPT EX. SERVICE WITH #3 1/2 PULLBOX AND EXTEND SERVICE WITH A NEW 2" CONDUIT TO NEW FOUNDATION, RE-PULL WIRE.
- REMOVE EX. TRAFFIC SIGN STRUCTURE FOUNDATION.
- REMOVE EX. SIDEWALK TO NEAREST JOINT OR SAWCUT AND REPLACE TO LIMITS SHOWN ON PLAN.
- REMOVE AND REPLACE EX. A.C. PAVEMENT PER NOTED SECTION TO LIMITS SHOWN ON PLAN.
- 3/4" INCH ROTOMILL AND OPENGRADE A.C. TO LIMITS SHOWN ON PLAN.
- INSTALL NEW # 3 1/2 PULL BOX AND INTERCEPT EX. STREETLIGHT AND LANDSCAPE LIGHT CONDUITS.
- INSTALL NEW # 3 1/2 PULL BOX.
- REMOVE AND REPLACE EX. SIDEWALK PAVERS.
- RELOCATE EX. 200A SERVICE PEDESTAL AT 453 STEWART AVE. TO 310 STEWART AVE. REPLACE EX. 125A SERVICE PEDESTAL. REMOVE EX. SERVICE WIRE AND RE-PULL W/3-#3/0 THW FROM EX. RS-1 PULL BOX LOCATED ON STEWART AVE. WEST OF 4TH ST. (SEE CONDUIT SCHEDULE THIS SHEET). SALVAGE EX. EQUIPMENT AND RETURN TO CITY OF LAS VEGAS YARD AT 3104 E. BONANZA ROAD. PRIOR TO DELIVERY, CALL 229-6331.
- EXTEND CONDUIT INTO EX. NVP SWITCH PER DIRECTION OF NVP.
- NOT USED
- REMOVE ABANDONED 8" CAST IRON WATERLINE NECESSARY FOR INSTALLATION OF CONDUIT.
- REMOVE EX. SIDEWALK TO NEAREST JOINT AND REPLACE TO MATCH EX. W/ DECORATIVE VERGE PATTERN. SEE DECORATIVE VERGE PATTERN DETAIL SHEET B.
- INSTALL 2" SCH. 40 CONDUIT(S) INTO EX. PULLBOX AS SHOWN ON PLAN. INTERCEPT AND RE-FEED EX. SERVICE WIRES FOR STREETLIGHT AND LANDSCAPE THROUGH NEW 2" CONDUIT TO RELOCATED SERVICE POINT AT 310 STEWART AVE. (SEE CONDUIT SCHEDULE THIS SHEET).
- INTERCEPT EX. LANDSCAPE ELEC. CONDUIT AND RE-PULL WIRE TO EX. SERVICE PEDESTAL.
- INSTALL 1P 20A BREAKER IN EX. SERVICE PEDESTAL.
- INSTALL 3'x 7'x 4" INTERCEPT PULL BOX PER NPC U.G. RS-85.
- INSTALL A 4", 45RGS BEND(S), NUMBERS AS INDICATED, WITH A 36" MIN. RADIUS, TAPED OR PVC COATED.
- INSTALL A 6", 45RGS BEND(S), NUMBERS AS INDICATED, WITH A 48" MIN. RADIUS, TAPED OR PVC COATED.
- REROUTE EX. SERVICE FOR GOLDSPIKE PARKING LIGHTS TO NEW NVP RS-1 HANDHOLE.

SEE SHEET UR4  
FOR WATERLINE PLAN

SEE SHEETS UR5 AND UR6  
FOR ALLEY PLAN AND PROFILES

**CITY OF LAS VEGAS DEPARTMENT OF PUBLIC WORKS**

**CONDUIT PLAN**

**STEWART AVENUE PARKING GARAGE UTILITIES RELOCATIONS**

ENGINEERING DESIGN SECTION  
CITY ENGINEER: CHARLIE KAKOWSKI, P.E.  
PROJECT MANAGER: ED NETTENSTROM, P.E.

DESIGNED BY: ESM/ECN  
CHECKED BY: ESM/ECN  
DATE 10-2-00  
DATE 10-2-00  
DATE 10-2-00

SCALE: H: 1"=20'

PROJECT NO: 101522

SEAL  
EDWARD NETTENSTROM  
REGISTERED PROFESSIONAL ENGINEER  
NO. 8078

**UR7**

DRAWING NO.  
**307-V787**