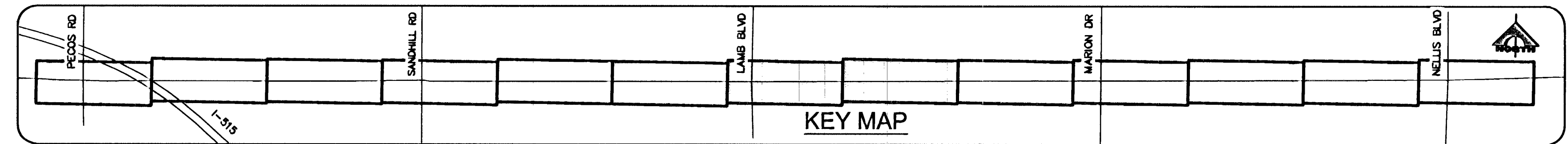
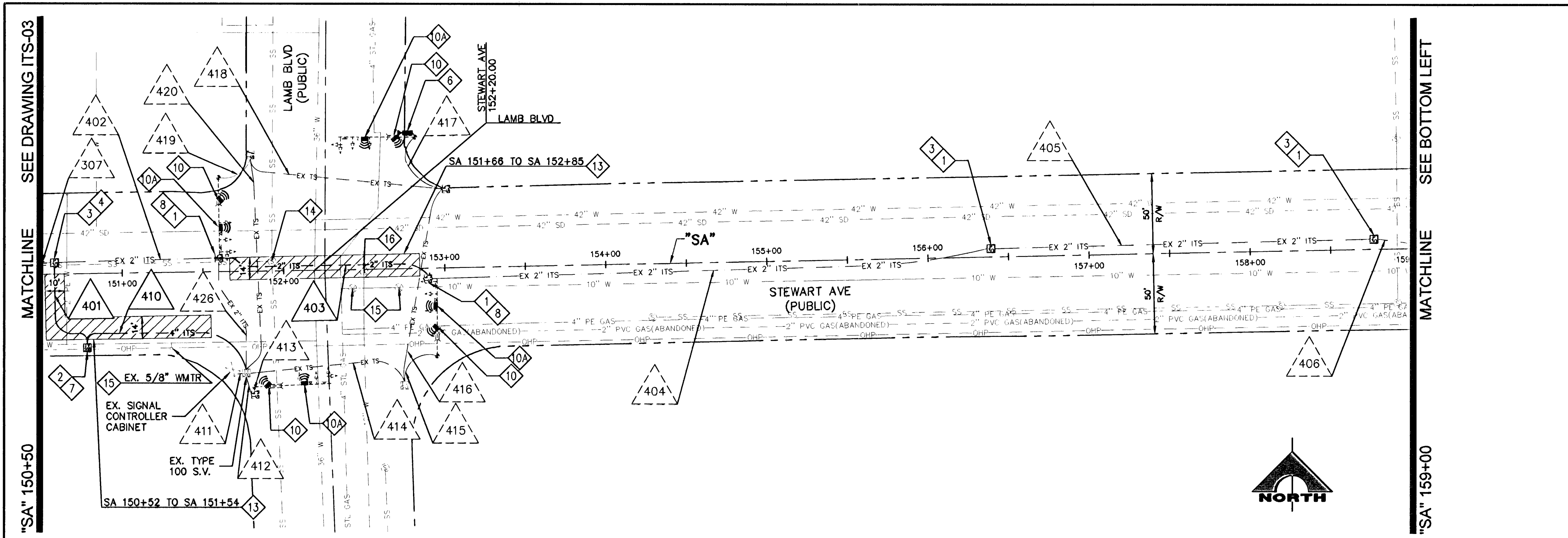


STEWART AVE- PECOS RD TO NELLIS BLVD



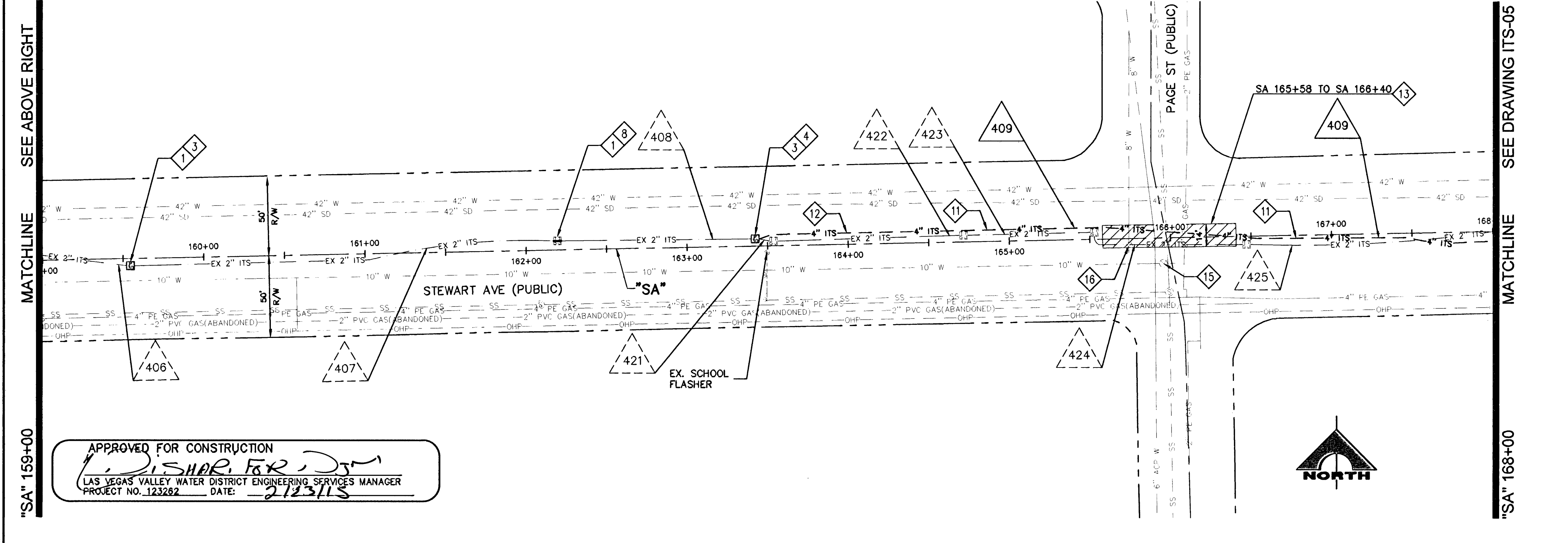
- ### CONSTRUCTION NOTES
- 1 REMOVE EXISTING PULL BOX
 - 2 INSTALL TYPE 200 SPLICE VAULT (USDCCA STD. DWG. NO. 762)
 - 3 INSTALL P30 PULL BOX (USDCCA STD. DWG. NO. 761)
 - 4 INTERCEPT EXISTING CONDUIT (SEE DETAILS ON DRAWING ITS-09)
 - 5 CHIP INTO EXISTING FOUNDATION
 - 6 INSTALL CCTV CAMERA WITH 10-FOOT EXTENSION POLE, UNLESS OTHERWISE NOTED, ON EXISTING POLE (USDCCA STD. DWG. NO. 766)
 - 7 PERFORM FIBER OPTIC SPLICE (SEE DRAWING ITS-12)
 - 8 CONNECT EXISTING CONDUIT (SEE DETAIL A ON DRAWING ITS-09)
 - 9 INSTALL VIDEO DETECTION CAMERA ON MAST ARM ALIGNED WITH LEFT-TURN LANE LINE. (PER MANUFACTURE RECOMMENDATIONS)
 - 10 INSTALL WAVETRONIX ADVANCE RADAR DETECTOR (SEE DETAILS ON DRAWING ITS-10)
 - 10A INSTALL WAVETRONIX MATRIX STOP BAR RADAR DETECTOR. (SEE DETAILS ON DRAWING ITS-10)
 - 11 REMOVE AND CONSTRUCT CONCRETE MEDIAN ISLAND SURFACE (SEE DETAIL E ON DRAWING ITS-08)
 - 12 CONSTRUCT PBS MEDIAN SURFACE PATCH (SEE DETAIL D ON DRAWING ITS-08)
 - 13 CONSTRUCT PBS PAVEMENT PATCH (SEE DETAIL A,B,& C ON DRAWING ITS-08). LIMITS SHALL ALIGN WITH LANE LINE
 - 14 ADJUST SANITARY SEWER MANHOLE TO FINISHED GRADE (DCSWCS STA DWG. NO. SD-4)
 - 15 PROTECT IN PLACE
 - 16 ADJUST WATER VALVE BOX TO FINISHED GRADE PER UDACS PLATE NO. 39. VALVE SHALL BE ACCESSIBLE AT ALL TIMES

- ### FIBER OPTIC NOTES
1. SLACK SHALL BE PROVIDED IN EACH P30 P.B. (30 FT) AND TYPE 200 S.V. (120 FT) UNLESS OTHERWISE NOTED.
 2. PULL BOXES/SPLICE VAULTS SHALL NOT BE INSTALLED IN SIDEWALK RAMPS OR DRIVEWAYS.
 3. 1-6 PR PE 39 #22 AWG CABLE SHALL BE INSTALLED IN NEW AND EXISTING CONDUIT AS SHOWN IN CONDUIT AND WIRE SCHEDULE.
 4. CONDUIT ROUTING IS SCHEMATIC FOR THE PURPOSE OF CLARITY AND MAY DIFFER FROM ACTUAL INSTALLATION. FINAL LOCATION SHALL BE DETERMINED IN THE FIELD BY THE ENGINEER.
 5. ALL EXISTING ITS INFRASTRUCTURE SHALL BE MAINTAINED UNLESS OTHERWISE SPECIFIED OR DIRECTED BY THE ENGINEER.
 6. PULL BOXES, SPLICE VAULTS, AND CONDUIT SHALL BE INSTALLED WITHIN RIGHT-OF-WAY OR EASEMENTS. CONTRACTOR SHALL VERIFY PRIOR TO INSTALLATION.
 7. LOCATIONS OF THE PROPOSED FIBER OPTIC SYSTEM PULL BOXES SHOWN ON THE PLANS ARE APPROXIMATE. THE CONTRACTOR SHALL BE RESPONSIBLE FOR MARKING THE LOCATIONS IN THE FIELD. THESE LOCATIONS SHALL BE SUBJECT TO APPROVAL BY THE ENGINEER BEFORE INSTALLATION.

- ### GENERAL NOTES
1. THE UTILITY LOCATIONS SHOWN ON THIS PLAN ARE APPROXIMATE ONLY AND ARE NOT RELIABLE FOR CONSTRUCTION PURPOSES. FOR ACTUAL FIELD LOCATIONS, CALL 1-800-227-2600
 2. WHERE NEW CONDUIT CROSSES EXISTING WATERLINES, PROTECT WATERLINE IN PLACE. WHERE NEW CONDUIT IS PARALLEL TO EXISTING WATERLINES, MAINTAIN MINIMUM HORIZONTAL CLEARANCE OF 3 FEET.
 3. PROTECT IN PLACE EXISTING STORM DRAIN AND SANITARY SEWER MAINS, LATERALS AND MANHOLES AND STORM DRAIN DROP INLETS DURING CONSTRUCTION.
 4. IF EXISTING SIDEWALKS AND/OR CURB AND CUTTER IS DAMAGED DURING CONSTRUCTION, CONTRACTOR SHALL REPLACE TO NEAREST EXISTING CONSTRUCTION JOINTS.
 5. REPLACE ALL TRAFFIC CONTROL DEVICES (SIGNS AND PAVEMENT MARKINGS) THAT ARE DISTURBED, DESTROYED, MOVED OR MODIFIED BY CONSTRUCTION. MATERIALS USED SHALL BE PER CITY OF LAS VEGAS SPECIFICATIONS.
 6. WHERE NEW CONDUIT CROSSES EXISTING GAS LINES, PROTECT GAS LINES IN PLACE.

LEGEND

LIMITS OF PBS PAVEMENT PATCH. (SEE DETAILS A,B,C,& D ON DRAWING ITS-08)



APPROVED FOR CONSTRUCTION
Timothy A. McCoy
 LAS VEGAS VALLEY WATER DISTRICT ENGINEERING SERVICES MANAGER
 PROJECT NO. 123282 DATE: 2/12/15

REV. NO.	DATE	DESCRIPTION	APPROVED

STEWART AVENUE
 PECOS ROAD TO NELLIS BOULEVARD
 ITS PLAN
 "SA" 150+50 TO "SA" 168+00
 REGIONAL TRANSPORTATION COMMISSION OF SOUTHERN NEVADA

PROJECT No: 882-002 DRAWN BY: TPD
 DESIGNED BY: TPD CHECKED BY: TAM
 APPROVED BY: _____

LAS VEGAS ELECTRIC
 3305 MEADE AVENUE
 LAS VEGAS NV 89102
 TEL: 702-362-0000
 FAX: 702-364-5375

G.C. WALLACE COMPANIES
 ENGINEERS | PLANNERS | SURVEYORS
 1158 RAINBOW BOULEVARD, LAS VEGAS NV 89104
 TEL: 702-804-2000 FAX: 702-804-2299 WWW.GCWALLACE.COM

SCALE	DRAWING NO.
HORIZ: AS SHOWN	ITS-04
VERT: NONE	SHT. 7 OF 15
FIELD BOOK	H#56607
	10716421

PLOTTED: 17/27/2014 9:45:05 AM