

**SUMMIT**  
ENGINEERING  
CORPORATION  
98 PLOT ROAD, SUITE A LAS VEGAS, NV 89199  
PHONE (702) 252-3268 FAX (702) 252-3247

DESIGNED BY: ACADP14  
DRAWN BY: ACADP14  
CHECKED BY: DATE: Copyright SUMMIT ENG 2007

**CIVIL IMPROVEMENT PLANS FOR STEWART AND NELLIS TRAFFIC, SIGNAGE, STRIPING AND STREETLIGHT PLAN**  
CLARK COUNTY  
LAS VEGAS  
NEVADA

REV.	DATE	DESCRIPTION	BY	APPD

SCALE: HORIZ: 1"=20' VERT: N/A JOB NO.: J73093



**PROPOSED SIGN**  
36"x12" R6-1R "ONEWAY" SIGN



**PROPOSED SIGN**  
12"x18" R7-9A "NO PARKING" SIGN



**PROPOSED SIGN**  
12"x18" R7-1APR "NO PARKING" SIGN

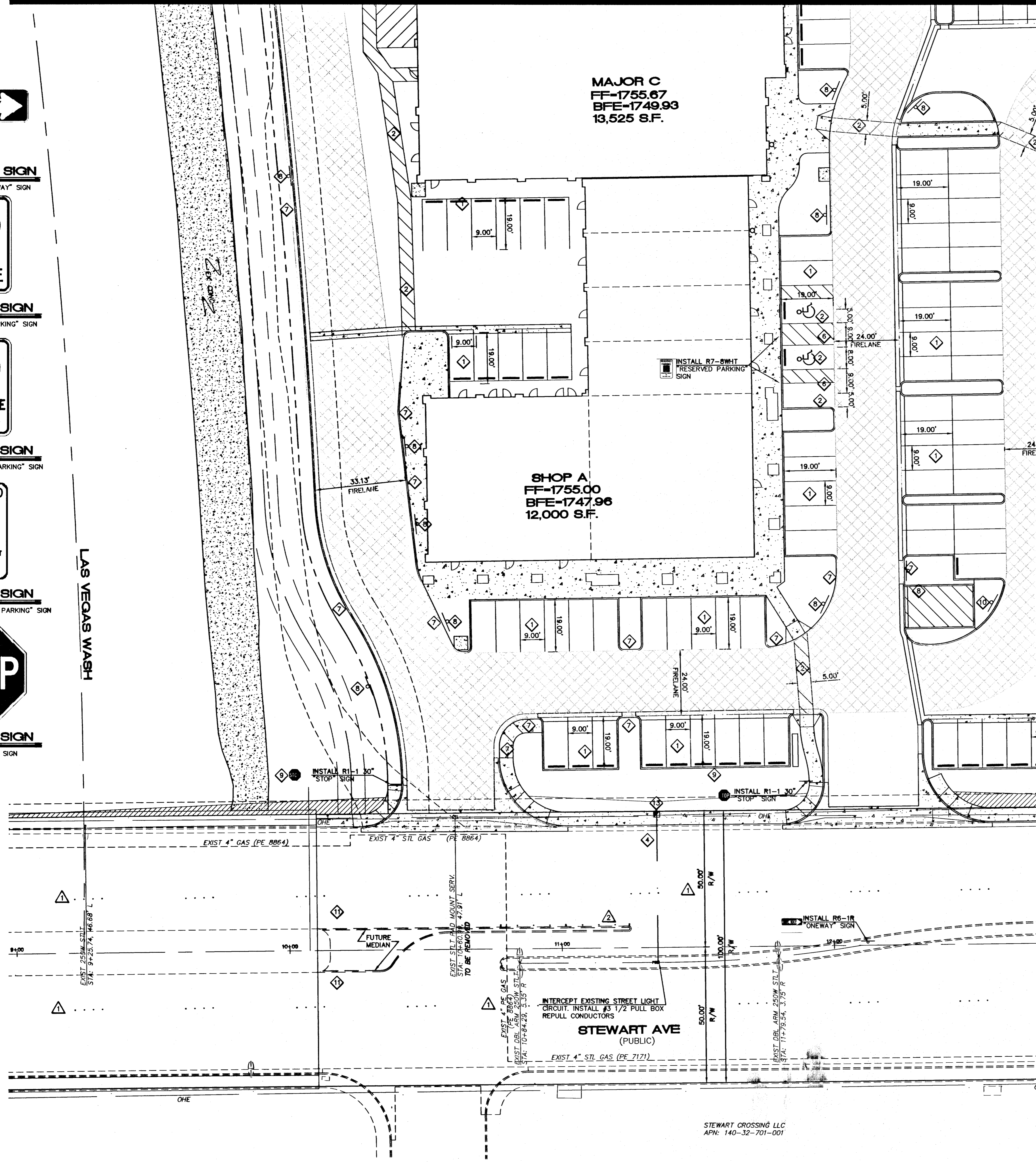


**PROPOSED SIGN**  
12"x18" R7-8 "RESERVED PARKING" SIGN



**PROPOSED SIGN**  
30" R1-1 "STOP" SIGN

LAS VEGAS WASH



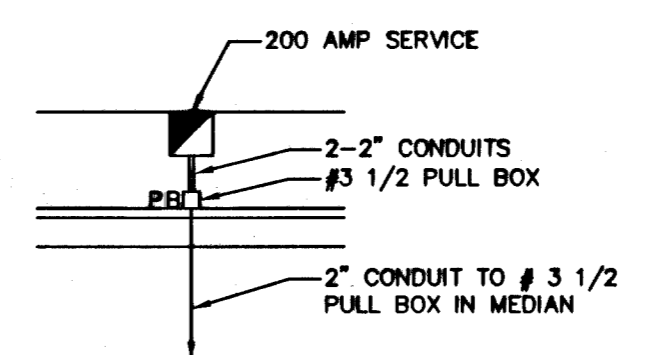
**NOTE:**  
REMOVE AND RETURN EXISTING PAD MOUNT SERVICE TO CITY OF LAS VEGAS YARDS AT 3104 E. BONANZA RD. CALL 24 HOURS BEFORE RETURNING AT 229-6331.

**CONSTRUCTION NOTES - TRAFFIC**

ITEM	QUANTITY	
	PUBLIC	PRIVATE
1. INSTALL 4" WIDE SOLID STRIPING	N/A	1542 L.F.
2. INSTALL 4" WIDE SOLID STRIPING 3" OC AT 45° DIAGONAL	N/A	2408 L.F.
3. INSTALL 250 WATT LUMINAIRE PER STD DWG 314, 320, & 321	3 EA.	N/A
4. INSTALL 2" PVC STREETLIGHT CONDUIT WITH (1) #8 AND (2) #4 THW COPPER CONDUCTORS PER STD DWG 313 & 321	55 L.F.	N/A
5. INSTALL F.A.S.T. 4" PVC CONDUIT WITH #8 BARE OR GREEN TRACER WIRE	NOT USED	NOT USED
6. HANDICAP PARKING STALL W/ R7-8 "RESERVED PARKING" SIGN	N/A	13 EA.
7. RED PAINTED CURB FOR FIRE LANE ACCESS	N/A	2,160 L.F.
8. INSTALL R7-9APR "NO PARKING" SIGN	N/A	32 EA.
9. INSTALL R1-1 30" "STOP" SIGN	N/A	4 EA.
10. INSTALL 18"X 24" R7-1APR "NO PARKING" SIGN	N/A	10 EA.
11. INSTALL 36"X 12" R6-1R "ONE WAY" SIGN	5 EA.	N/A
12. REMOVE FOUNDATION 24" MIN BELOW FG CONNECT CONDUIT AND PULL WIRE.	5 EA.	N/A
13. 200 AMP 240V PAD MOUNT SERVICE WITH 2-2 POLE 60 AMP CIRCUIT BREAKERS 1-1 POLE 15 AMP CIRCUIT BREAKERS 0-1 POLE 40 AMP CIRCUIT BREAKERS 0-1 POLE 60 AMP CIRCUIT BREAKERS 2-2 POLE 60 AMP CONTACTOR/S 1-BY-PASS SWITCH PER CONTACTOR	5 EA.	N/A

**EXISTING**

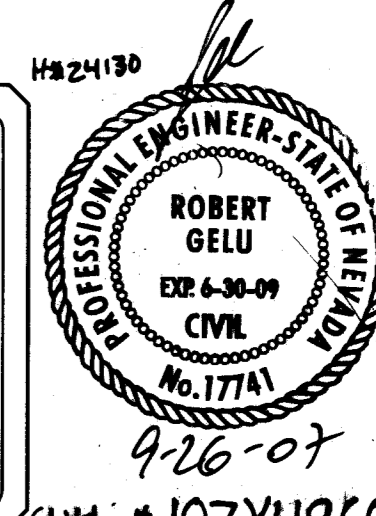
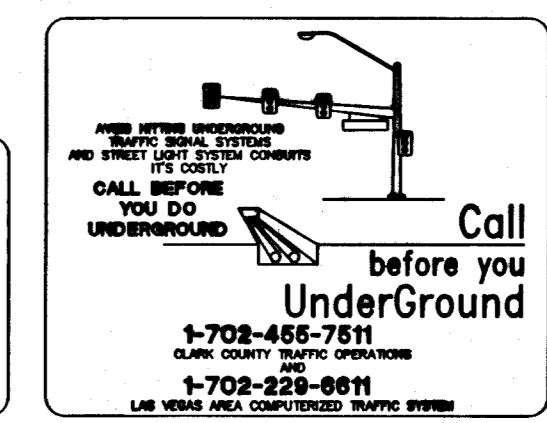
- △ EXISTING TYPE 4 CENTERLINE (TO REMAIN)
- △ EXISTING LEFT TURN LANE LINE (TO REMAIN)
- △ EXISTING CROSSWALK (TO REMAIN)
- △ EXISTING STOP BAR (TO REMAIN)
- △ EXISTING 4" PAINTED DIRECTIONAL STRIPING (TO REMAIN)
- △ EXISTING SIGNAL LIGHT MAST ARM AND APPURTENANCES (TO REMAIN)
- △ EXISTING RIGHT HAND TURN LANE (TO REMAIN)



**PAD MOUNT SERVICE DETAIL**  
SCALE: NONE

**UTILITY NOTE**

UTILITY LOCATIONS SHOWN HEREON ARE APPROXIMATE ONLY. IT SHALL BE THE CONTRACTOR'S RESPONSIBILITY TO DETERMINE THE EXACT HORIZONTAL AND VERTICAL LOCATION OF ALL EXISTING UNDERGROUND UTILITIES PRIOR TO COMMENCING CONSTRUCTION. NO REPRESENTATION IS MADE THAT ALL EXISTING UTILITIES ARE SHOWN HEREON. THE ENGINEER ASSUMES NO RESPONSIBILITY FOR UTILITIES NOT SHOWN OR UTILITIES NOT SHOWN IN THEIR PROPER LOCATION.



STEWART CROSSING LLC  
APN: 140-32-701-001