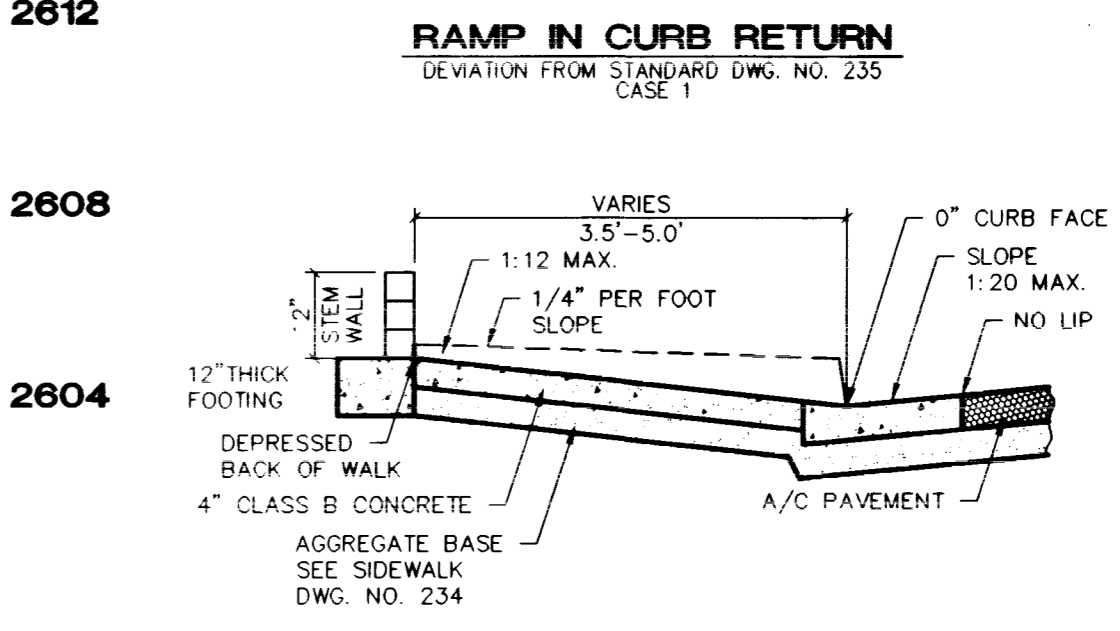
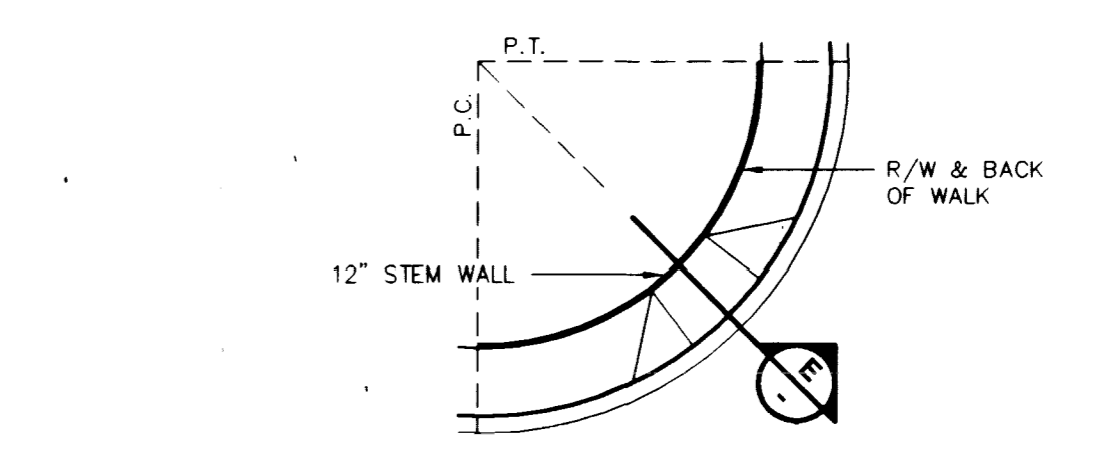
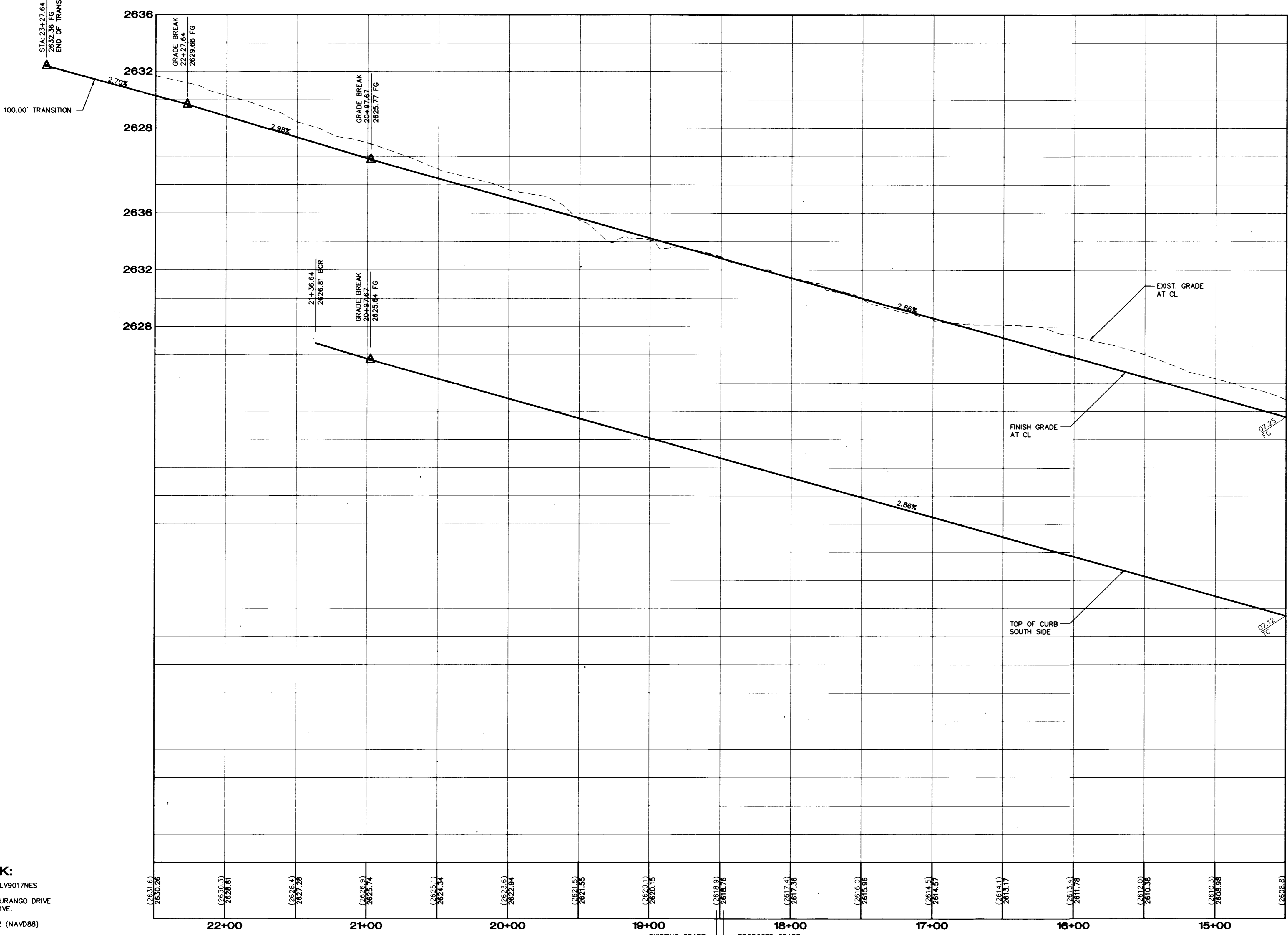


**BENCHMARK:**  
 CLV BM NO. 7, STA. 1L9017NES  
 BLM BRASS CAP AT DURANGO DRIVE  
 AND GRAND TETON DRIVE.  
 ELEVATION = 2541.392 (NAV088)

Call before you Dig  
 1-800-227-2600

Call before you OVERHEAD  
 1-702-593-6111  
 202.73



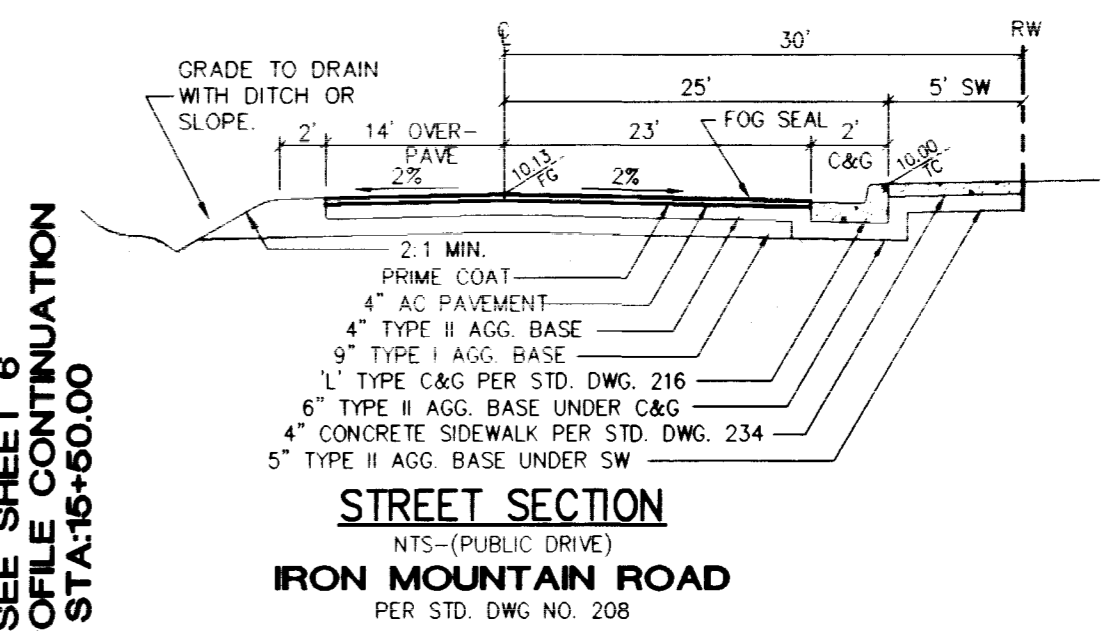
**SIDEWALK RAMP/ STEM WALL SECTION**  
 N.T.S.

**SIDEWALK RAMP TABLE**  
 (STD. DWG. NO.235)

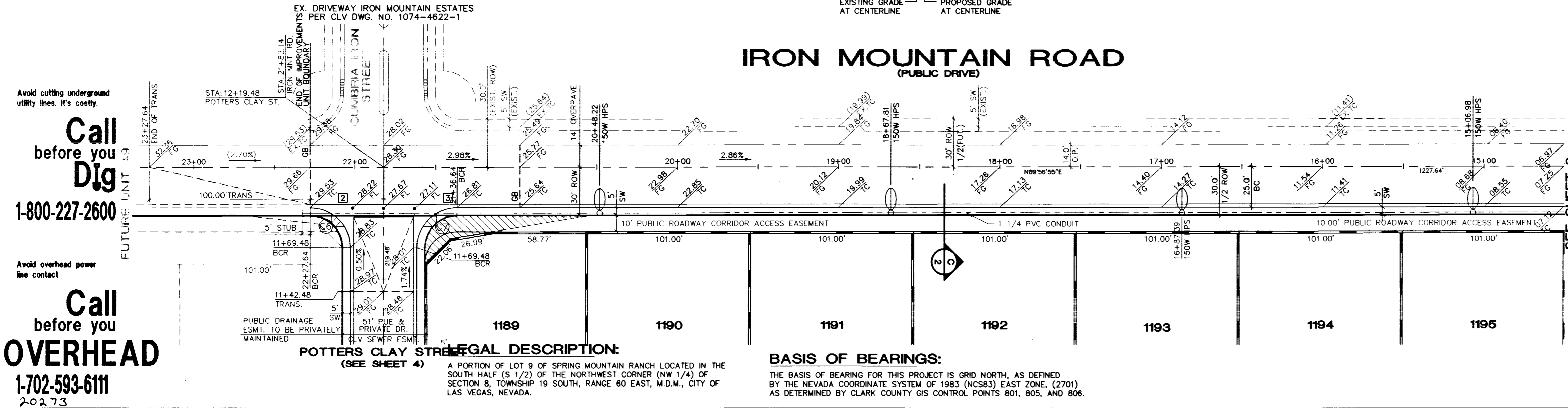
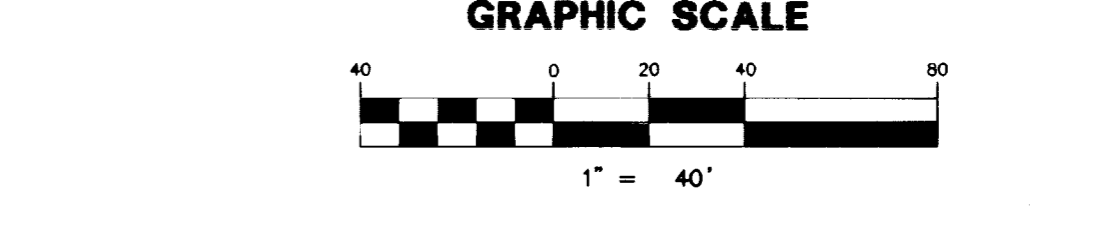
RAMP	"A"	"B"
2	4'-6"	9'-6"
3	4'-6"	15'-0"

**BACK OF CURB CURVE DATA TABLE**

CURVE	RADIUS	LENGTH	TANGENT	DELTA
C1	19.50'	17.97'	9.68'	52°47'09"
C2	40.50'	202.34'	30.38'	286°15'31"
C3	19.50'	18.20'	9.82'	52°28'45"
C4	20.00'	31.33'	19.91'	89°44'56"
C5	20.00'	32.04'	20.64'	91°47'48"
C6	25.00'	39.27'	25.00'	90°00'00"
C7	25.00'	39.27'	25.00'	91°00'00"
C8	30.00'	47.20'	30.08'	90°09'11"



**STREET SECTION**  
 N.T.S.-(PUBLIC DRIVE)  
 IRON MOUNTAIN ROAD  
 PER STD. DWG NO. 208



**LEGAL DESCRIPTION:**  
 A PORTION OF LOT 9 OF SPRING MOUNTAIN RANCH LOCATED IN THE SOUTH HALF (S 1/2) OF THE NORTHWEST CORNER (NW 1/4) OF SECTION 8, TOWNSHIP 19 SOUTH, RANGE 60 EAST, M.D.M., CITY OF LAS VEGAS, NEVADA.

**BASIS OF BEARINGS:**  
 THE BASIS OF BEARING FOR THIS PROJECT IS GRID NORTH, AS DEFINED BY THE NEVADA COORDINATE SYSTEM OF 1983 (NCS83) EAST ZONE, (2701) AS DETERMINED BY CLARK COUNTY GIS CONTROL POINTS 801, 805, AND 806.

**SOUTHWEST COMMUNITIES INC.**  
 500 N. RAINBOW BOULEVARD, STE. 314  
 CITY OF LAS VEGAS, NEVADA

**CONSULTING ENGINEERS • PLANNERS • LAND SURVEYORS**  
 2727 SOUTH RAINBOW BOULEVARD  
 LAS VEGAS, NEVADA 89102-5148 PHONE (702) 873-7550 FAX (702) 362-2597

**vtm nevada**

REV	DATE	BY	REVISION
1			
2			
3			

**STREET PLAN & PROFILE**  
**IRON MOUNTAIN ROAD**  
**SPRING MOUNTAIN RANCH**  
 UNIT 48

TITLE PROJECT

SEAL

**PROFESSIONAL ENGINEER STATE OF NEVADA**  
 THOMAS E HAYES  
 CIVIL  
 LICENSE NO. 9426

W.O. NO. **5069-1**  
 BY **ASM/FD**  
 DATE **OCT. 1997**  
 SCALE HORIZ. 1"=40'  
 VERT. 1"=4'

SHEET **5** OF 9 SHEETS

