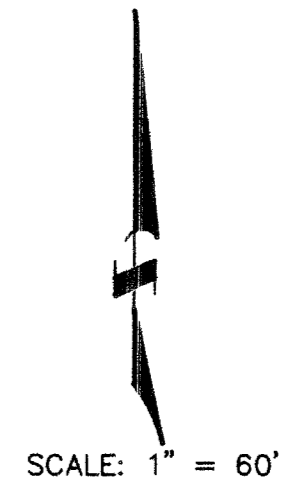


# FINAL MAP OF SPANISH STEPS PLAZA A COMMERCIAL SUBDIVISION

BEING A PORTION OF THE SOUTHWEST ONE-QUARTER ( SW 1/4 ) OF THE  
SOUTHEAST ONE-QUARTER ( SE 1/4 ) OF SECTION 28, TOWNSHIP 19 SOUTH,  
RANGE 60 EAST, M.D.M., CITY OF LAS VEGAS, CLARK COUNTY, NEVADA



CURVE TABLE				
NO.	RADIUS	LENGTH	TANGENT	DELTA
C1	25.00	39.18	24.91	89°47'31"
C2	20.00	31.42	20.00	90°00'00"
C3	10.00	15.71	10.00	90°00'00"
C4	20.00	31.49	20.07	90°12'29"
C5	10.00	15.67	9.96	89°47'31"

LINE TABLE		
NO	LENGTH	BEARING
L1	30.52	S06°16'41"E
L2	15.81	S45°06'14"E
L3	34.03	S84°36'38"W
L4	7.81	S45°00'00"W
L5	20.46	S45°00'00"E
L6	18.54	S84°36'38"W
L7	7.81	S45°00'00"W
L8	20.46	S45°00'00"E
L9	2.26	N00°10'51"W
L10	20.58	S44°53'46"W
L11	7.87	S45°06'14"E
L12	24.83	S06°16'41"E
L13	107.74	N01°46'02"E
L14	23.00	S00°00'00"E
L15	10.28	S90°00'00"W
L16	23.00	S00°00'00"E
L17	159.50	N01°46'02"E
L18	22.09	N00°12'29"W
L19	122.51	N88°01'31"W
L20	23.00	N90°00'00"E
L21	10.00	N00°00'00"E
L22	23.00	N90°00'00"W
L23	86.69	N88°09'09"W
L24	23.00	N90°00'00"E
L25	10.00	N00°00'00"E
L26	23.00	N90°00'00"E
L27	101.58	N88°09'09"W
L28	41.70	N06°16'41"W
L29	23.00	S00°00'00"E
L30	10.28	N90°00'00"E
L31	23.00	S00°00'00"E
L32	11.10	N00°12'29"W
L33	6.00	N00°00'00"E
L34	6.00	N90°00'00"W
L35	6.00	S00°00'00"W
L36	6.00	N90°00'00"E
L37	15.00	N00°00'00"E
L38	15.00	N90°00'00"E
L39	15.00	S00°00'00"W
L40	15.00	N90°00'00"W
L41	6.00	S89°47'31"E
L42	6.00	N00°12'29"W
L43	6.00	N89°47'31"E
L44	6.00	S00°12'29"E
L45	15.00	S89°47'31"E
L46	15.00	N00°12'29"W
L47	15.00	N89°47'31"E
L48	15.00	S00°12'29"E

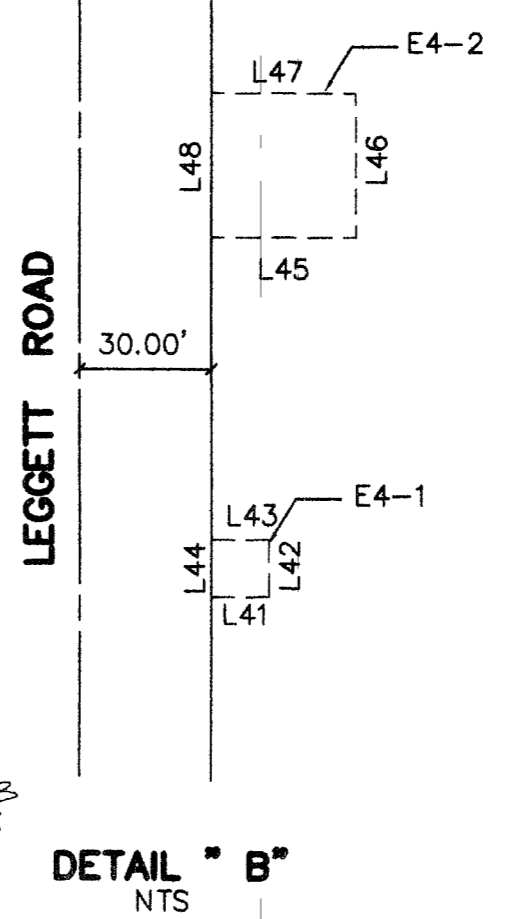
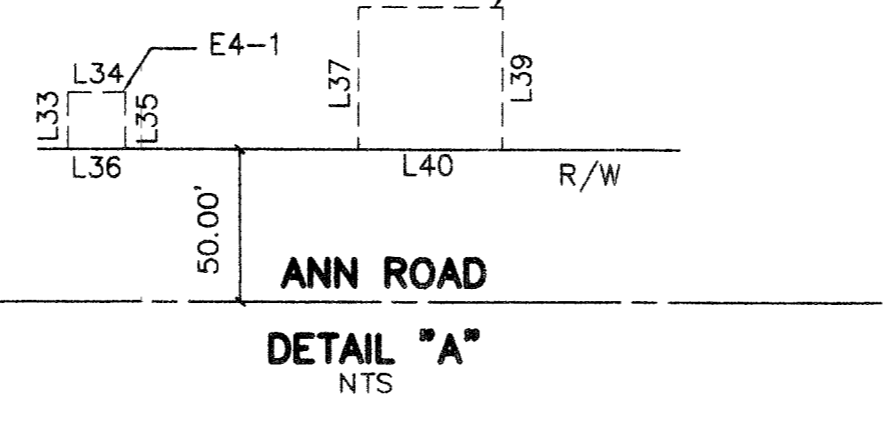
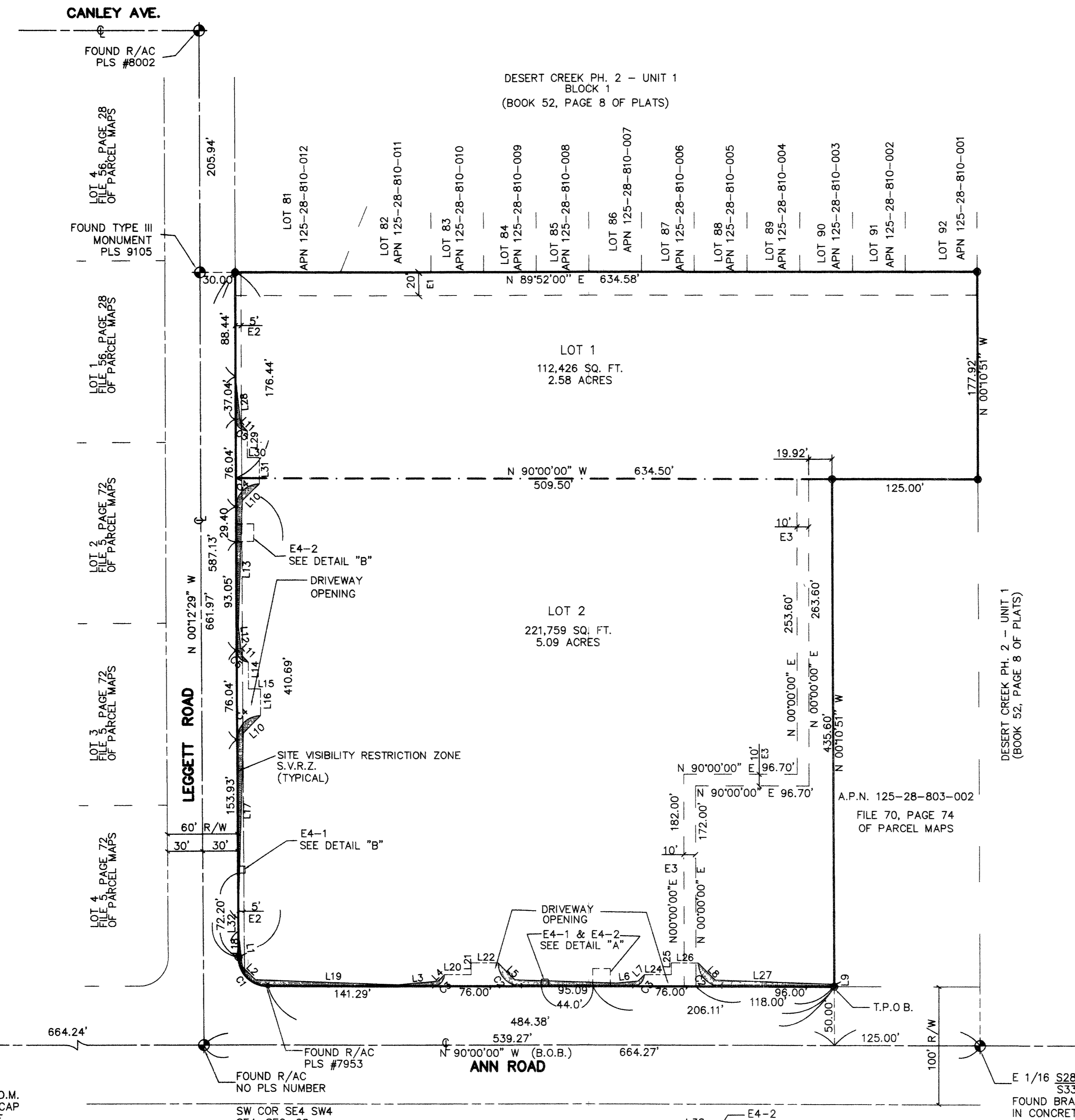
- LEGEND**
- +— SUBDIVISION BOUNDARY
  - MONUMENTS FOUND AS SHOWN
  - SET NAIL & TAG PLS # 5269
  - CENTER LINE
  - ( M ) MEASURED DATA
  - ( R-# ) RECORDED DATA
  - ( D ) DEED DATA
  - ( B.O.B. ) BASIS OF BEARINGS
  - SQ. FT. SQUARE FEET ( AREA )
  - S.V.R.Z. SIGHT VISIBILITY RESTRICTION ZONE
  - P.U.E. PUBLIC UTILITY EASEMENT
  - CENTERLINE ROADWAY
  - - - ADJACENT LOT LINES
  - - - EASEMENT
  - - - LOT LINE
  - [Hatched Box] SIGHT VISIBILITY RESTRICTION ZONE (TO BE PRIVATELY MAINTAINED) SEE NOTE "A" BELOW AT BOTTOM OF PAGE

EASEMENT TABLE	
NO.	DESCRIPTION
E1	20 FOOT DRAINAGE EASEMENT PER FILE 58, PAGE 74 OF PARCEL MAPS RECORDED 11/17/91
E2	5 FOOT NEVADA POWER COMPANY AND CENTRAL TELEPHONE COMPANY EASEMENT PER BOOK 545, DOCUMENT 504288, 8/20/75
E3	10 FOOT PUBLIC DRAINAGE EASEMENT (TO BE PRIVATELY MAINTAINED) - DEDICATED PER THIS MAP
E4	WATER DISTRICT EASEMENTS
E4-1	6'x6' FIRE HYDRANT EASEMENT
E4-2	15'x15' DOUBLE CHECK DETECTOR ASSEMBLY EASEMENT

- REFERENCES**
- FILE 5, PAGE 72 OF PARCEL MAPS
  - FILE 6, PAGE 23 OF PARCEL MAPS
  - FILE 56, PAGE 28 OF PARCEL MAPS
  - FILE 70, PAGE 74 OF PARCEL MAPS
  - BOOK 52, PAGE 08 OF PLATS
  - BOOK 58, PAGE 47 OF PLATS
  - BOOK 91, PAGE 31 OF PLATS

NOTE:  
ANY SUBSEQUENT CHANGES TO THIS MAP SHOULD BE EXAMINED AND MAY BE DETERMINED BY REFERENCE TO THE COUNTY RECORDER'S CUMULATIVE MAP INDEX. N.R.S. 278.5695

<b>FULSTONE ENTERPRISES INC.</b> 940 S. MARTIN LUTHER KING BLVD. LAS VEGAS, NEVADA 89106 PH(702) 382-8141 FAX(702) 382-3103	DRAWN BY: MONARCH DESIGN DATE: 10/08/2001 FILE: 315BFM.DWG DWG #: JJ2-B SCALE: 1" = 60'
--	---



**NOTE A: SIGHT VISIBILITY RESTRICTION ZONE**  
NO WALLS, FENCES, TREES, SHRUBS, UTILITY APPURTENANCES OR ANY OTHER OBJECT, OTHER THAN TRAFFIC CONTROL DEVICES AND STREET LIGHT POLES, MAY BE CONSTRUCTED OR INSTALLED WITHIN THE SIGHT VISIBILITY ZONE UNLESS SAID OBJECT IS MAINTAINED AT LESS THAN 24 INCHES IN HEIGHT MEASURED FROM TOP OF CURB, OR WHERE NO CURB EXISTS, A HEIGHT OF 27 INCHES, MEASURED FROM THE TOP OF ADJACENT ASPHALT, GRAVEL OR PAVEMENT STREET SURFACE.

82037

SHEET 2 OF 2

4695