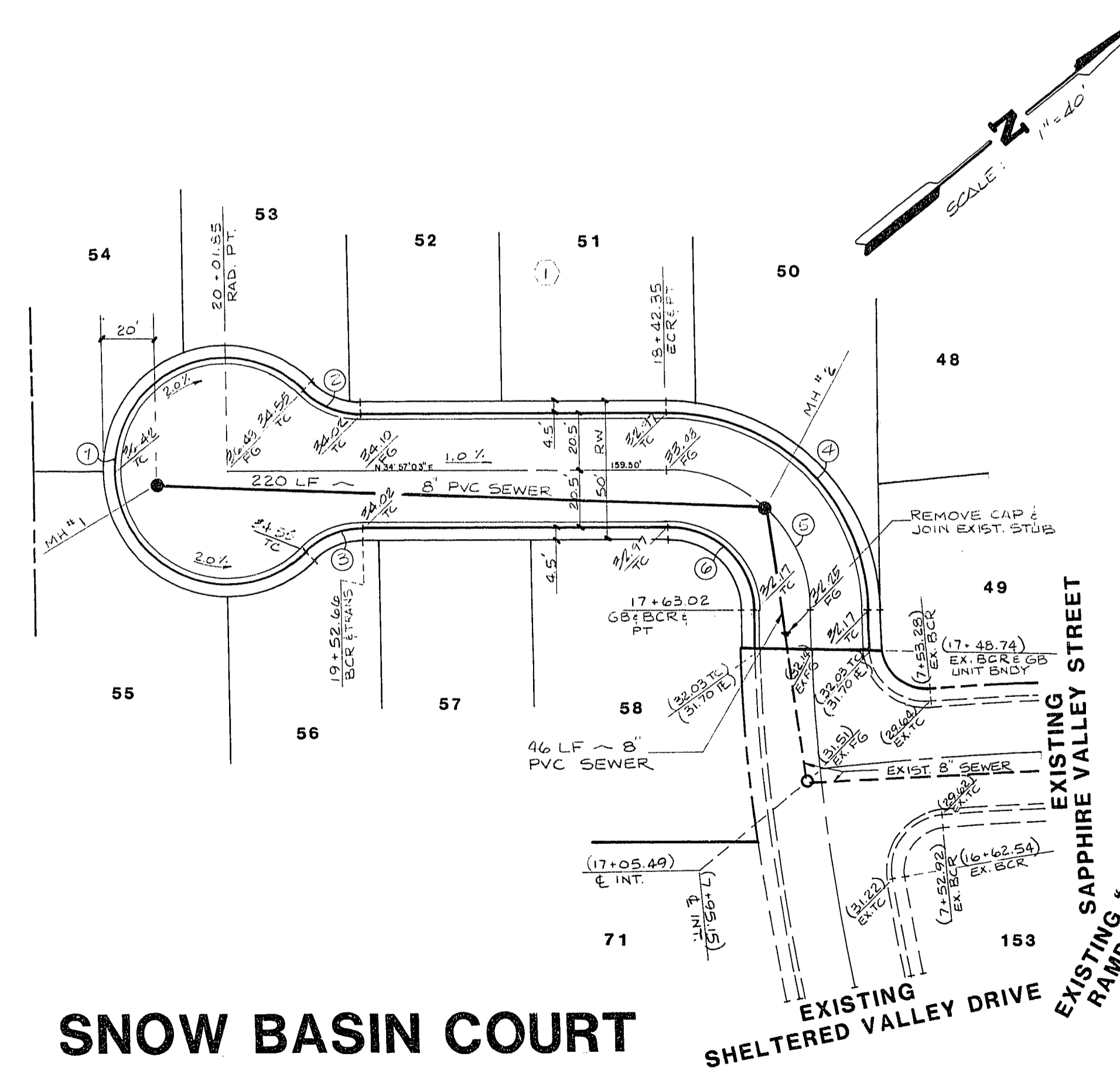


21 20+00 19 18 17 16 2 1 0+00

REV	DATE	BY	REVISION
1	5-3-90	TB	REVISED OFFSET CORONEN APPLE HILL COURT SEE C.L.Y.
2	5-25-90	PPJ	CHANGE CURVE FROM 1" TO 2" RADIUS

ESI ENGINEERS & SURVEYORS INC.
 17705 34TH AVE S.E.
 SUITE 200
 BURTON, WYOMING 82404
 PHONE: 307-233-4415
 FAX: 307-233-4416

SUBMITTED BY: *Dawn* 4/12/90



SNOW BASIN COURT

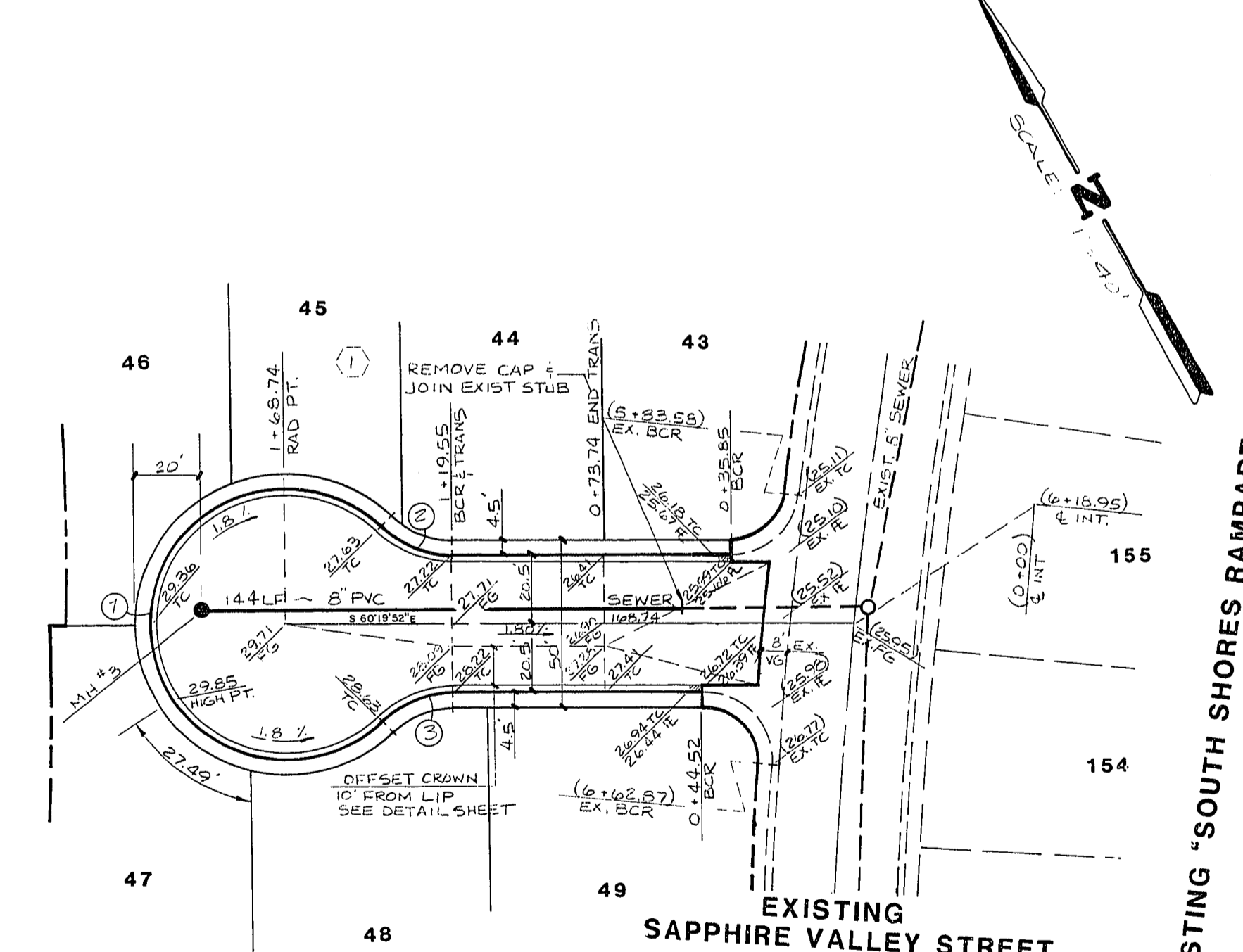
CURVE DATA

No.	Δ	R	L	T
1	263°24'54"	30.00	189.79	-
2	24°14'57"	30.00	22.17	12.20
3	44°14'57"	30.00	22.17	12.20
4	90°00'00"	71.00	111.55	71.00
5	40°00'00"	50.50	79.33	50.50
6	90°00'00"	30.00	47.12	30.00

QUANTITY ESTIMATE

2" ASPHALTIC CONCRETE PAVING 23575.5 Y.
 80' BOLL CURB & GUTTER 1039 L.F.
 4.5" CONCRETE SIDEWALK 4707 S.F.
 SAWCUT 37 L.F.

THESE QUANTITIES ARE ESTIMATES ONLY
 CONTRACTOR TO VERIFY



APPLE HILL COURT

EXISTING "SOUTH SHORES RAMPART UNIT NO. 3"

Call before you Dig.
 1-800-227-2600
UNDER NEW JERSEY STATE POLICE ACT

TITLE: STREET & SEWER PLAN & PROFILE
 (SNOW BASIN COURT & APPLE HILL COURT)

PROJECT: SOUTH SHORES RAMPART UNIT NO. 4

WO NO.	5334
BY	BURCH
DATE	4/90
SCALE	VERT. 1" = 4' HORIZ. 1" = 40'

SHEET	4
OF 7 SHEETS	

BENCHMARK
 TOP OF B.L.M. BRASS CAP E. 1/16 ON
 CHEYENNE 1/4 MILE WEST OF BUFFALO
 ELEVATION = 2388.62 FEET

104 1074-4065-4