

CITY OF LAS VEGAS SEWER NOTES

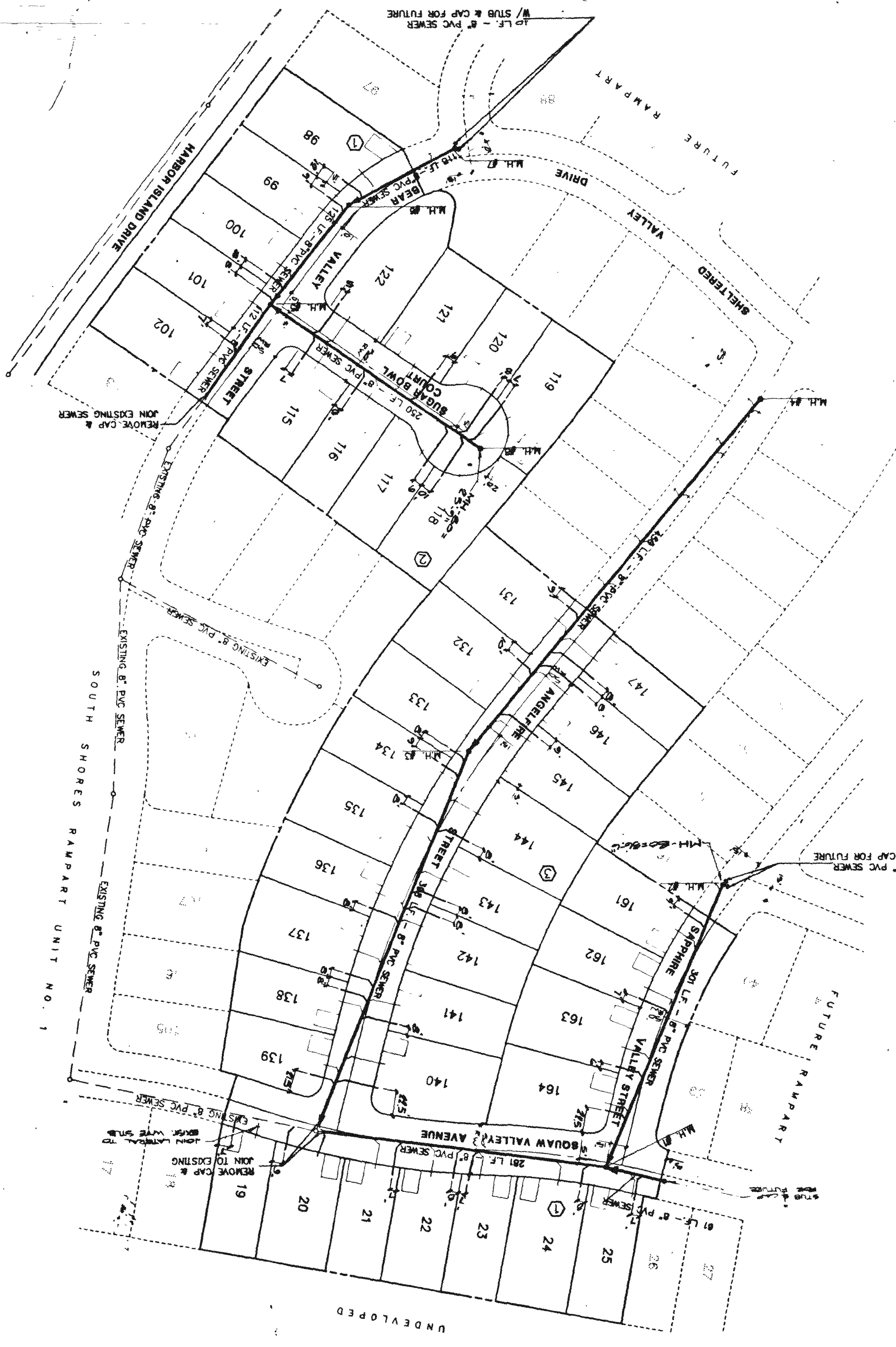
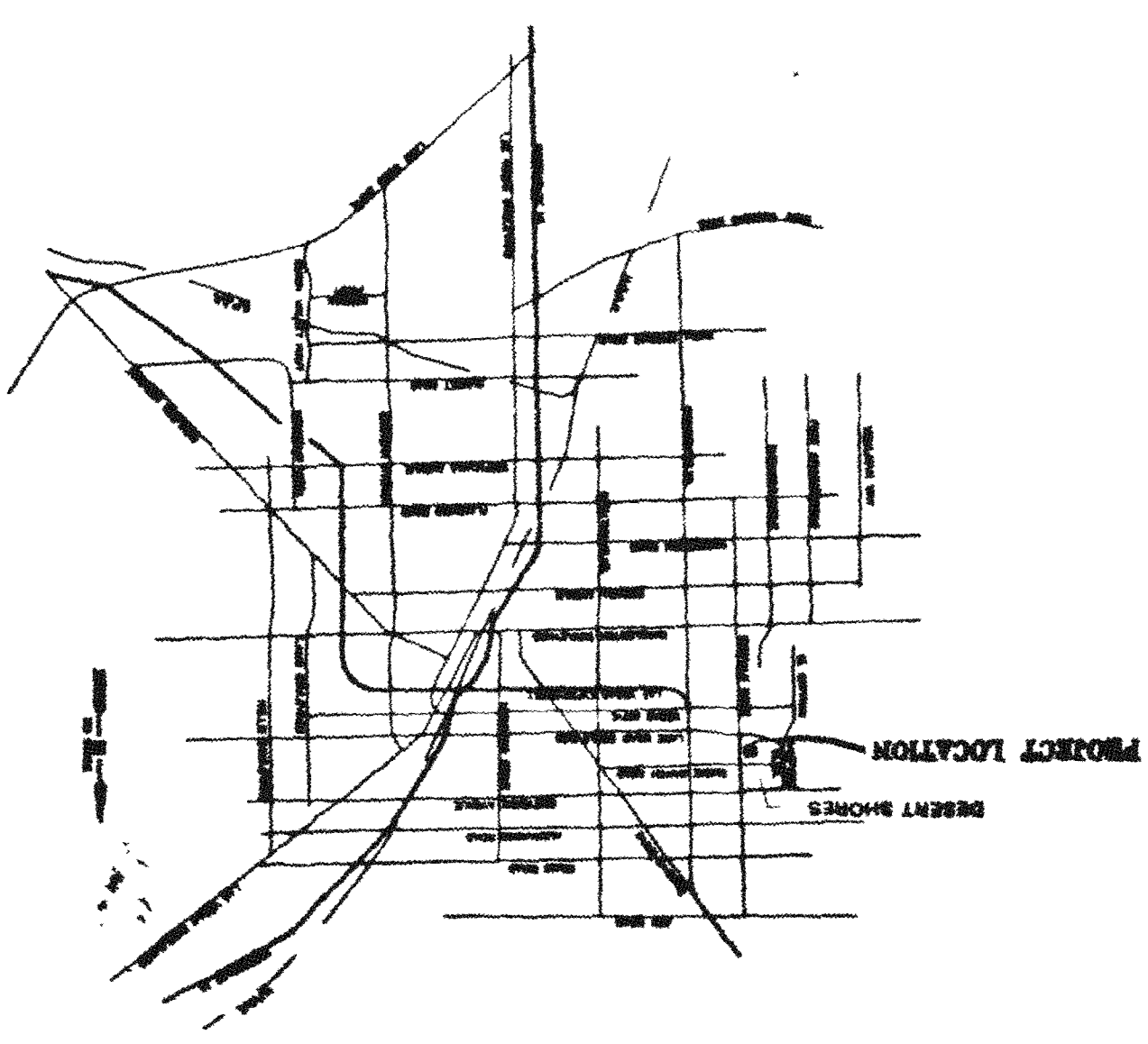
1. ALL SANITARY SEWER INSTALLATIONS SHALL CONFORM TO THE STANDARD DETAILS AND SPECIFICATIONS OF THE CITY OF LAS VEGAS, AND SHALL ALSO CONFORM TO THE UNIFORM STANDARDS FOR PUBLIC WORKS CONSTRUCTION OF OFF-SITE IMPROVEMENTS, CLARK COUNTY AREA, LATEST EDITION, UNLESS OTHERWISE NOTED.
2. CHISEL "S" OR "G" IN CURBS WHERE SEWER OR GAS LATERALS PASS UNDER THE CURB.
3. POLYETHYLENE GLASS FIBRE (PVC) SEWER PIPE SHALL MEET ASTM D-3034 SDR 35 SPECIFICATIONS, AND INSTALLED WITH SAID BEDDING AND BACKFILL OR TYPE II GRAVEL COLLARS.
4. ALL MANHOLES IN PAVED STREETS, R/W AND LAHGER, SHALL HAVE CONCRETE TEES SADDLES SHALL BE USED TO CONNECT SEWER LATERALS TO EXISTING MAIN LINES UP TO 12" DIA. SIZE CONNECTIONS TO 15" OR LARGER MAINS SHALL REQUIRE SPECIAL PROCEDURES.
5. A SEWER MAIN CROSSING OVER A WATER MAIN OR LESS THAN 18" UNDER A WATER MAIN MUST BE REINFORCED CONCRETE ENCASED PIPE FOR A DISTANCE NOT LESS THAN TEN FEET (10') TO EACH SIDE OF THE CENTERLINE OF THE WATER MAIN.

NOTE: THESE QUANTITIES ARE ONLY ESTIMATES, CONTRACTOR TO VERIFY

QUANTITY ESTIMATE

- 4" DIAMETER MANHOLE 8 EA.
- 8" SEWER MAIN 1.36 L.F.
- 12" L.F. 12 EA.
- W/VE STUBS

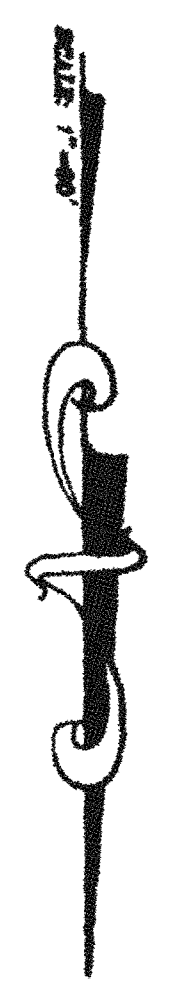
VICINITY MAP



MANHOLE CONTROL COORDINATES

M.H. NO.	NORTHING	EASTING
1	7097.4852	5261.9126
2	6819.9952	5145.9657
3	6686.4416	5384.9005
4	6340.5238	5106.7485
5	6146.9611	5509.5151
6	6091.7804	5405.5685
7	6387.8193	5362.0631

BENCHMARK
 TOP OF B.L.M. BRASS CAP E. 1/16 ON
 CENTERLINE 1/4 MILE WEST OF BUFFALO
 ELEVATION = 2388.62



1-800-277-2800
 PROFESSIONAL SERVICE DIVISION

NO. NO.	5332
BY	T. MARSH
DATE	7/1/99
SCALE	1"=60'
SHEET	6
OF SHEETS	6

TITLE
MASTER SEWER PLAN
 PROJECT
SOUTH SHORES RAMPART UNIT NO. 2

DESIGN ENGINEERS & SURVEYORS, INC.
 REGISTERED PROFESSIONAL ENGINEERS AND SURVEYORS
 STATE OF NEVADA
 7/31/99

REV.	DATE	BY	REVISION

As-Built 307Y-465-2-125

