

REV	DATE	BY	REVISION
1	8-14-80	TH-1	ADD MAP 2520-1-2

**ESI ENGINEERS & SURVEYORS INC.**  
 7018 W. CHEYENNE AVENUE, SUITE 117, DENVER, CO 80231  
 PAUL E. VALENTE  
 REGISTERED PROFESSIONAL ENGINEER  
 STATE OF COLORADO  
 7/31/89  
 100,3015

**QUANTITY ESTIMATE**

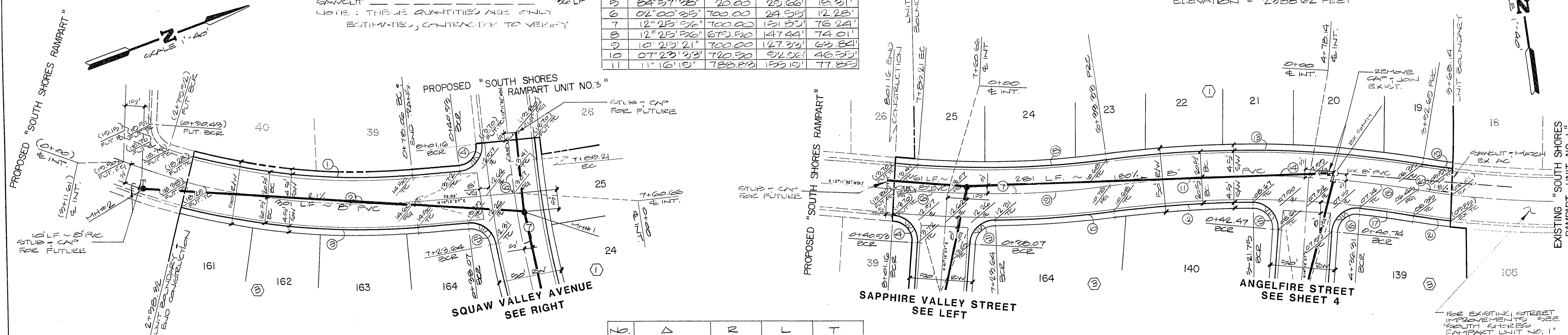
2.0" ASPHALTIC CONCRETE FINING \_\_\_\_\_ 2,661 SY  
 30" ROLL TYPE CURB & GUTTER \_\_\_\_\_ 1,147 LF  
 6" NITE SURVEYING \_\_\_\_\_ 5,223 CF  
 CONCRETE VULNER CUTTER \_\_\_\_\_ 6.47 SF  
 SAWCUT \_\_\_\_\_ 36 LF  
 NOTE: THESE QUANTITIES ARE ONLY ESTIMATES, CONTRACTOR TO VERIFY

**CURVE DATA TABLE**

NO	Δ	R	L	T
1	12°43'32"	302.16	173.15'	87.46'
2	12°45'28"	322.66	180.26'	91.06'
3	12°45'28"	322.16	187.23'	94.60'
4	32°22'02"	20.00	31.42'	20.00'
5	84°57'35"	20.00	25.66'	18.31'
6	02°00'35"	700.00	24.53'	12.28'
7	12°25'36"	700.00	121.82'	76.24'
8	12°25'36"	670.52	147.44'	74.01'
9	12°25'21"	700.00	127.22'	63.84'
10	07°29'33"	720.52	92.08'	46.33'
11	11°16'10"	788.82	155.10'	77.85'

**BENCHMARK**

TOP OF 3LM BRASS CAP E 1/16 ON  
 CHEYENNE 1/4 MILE WEST OF BUFFALO  
 ELEVATION = 2988.62 FEET



**SAPPHIRE VALLEY STREET**

**SQUAW VALLEY AVENUE**

NO	Δ	R	L	T
12	08°06'15"	768.33	108.68'	54.42'
13	17°28'42"	800.33	246.83'	124.41'
14	17°28'42"	788.82	240.64'	121.26'
15	24°19'40"	20.00	32.32'	21.87'
16	31°32'40"	20.00	32.07'	20.67'
17	08°10'04"	768.33	42.48'	21.25'
18	08°12'02"	788.82	23.48'	12.77'
19	02°15'26"	602.82	23.78'	11.88'
20	02°15'26"	623.32	24.58'	12.28'
21	02°15'26"	643.82	25.54'	12.77'

**Call before you Dig.**  
 1-800-227-2600  
 UNDERGROUND SERVICE USA

TITLE: STREET & SEWER PLAN & PROFILE (SAPPHIRE VALLEY STREET & SQUAW VALLEY STREET)  
 PROJECT: SOUTH SHORES RAMPART UNIT NO. 2

WO NO.	P0792
BY	D. CERDA
DATE	7-80
SCALE	HORIZ: 1"=40' VERT: 1"=4'

SHEET: **3**  
 OF 8 SHEETS