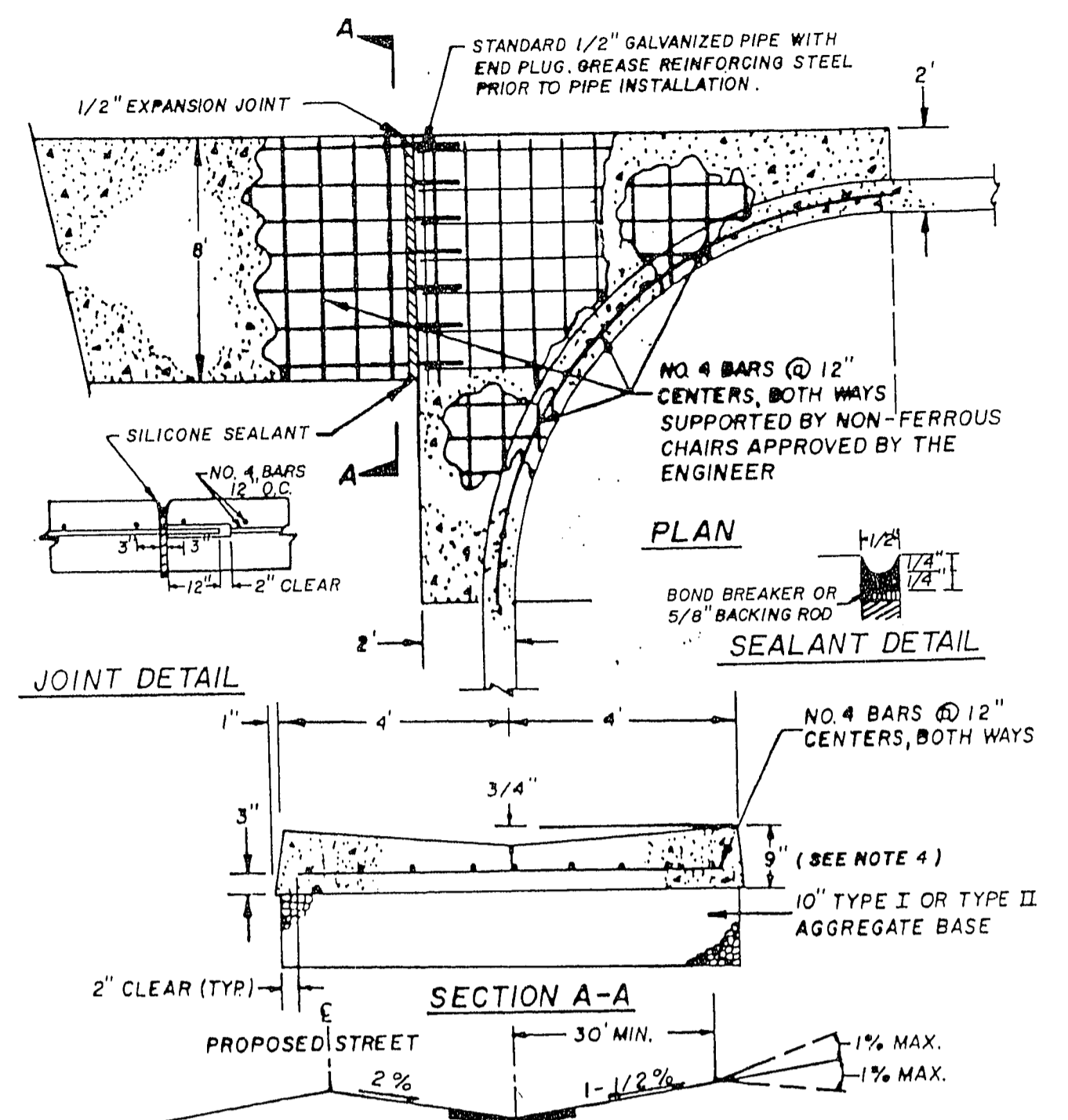


NOTE 1
TOP OF SLOPE IS DOWN AND AWAY FROM THE STANDARD FOR DRAINAGE.

NOTE 2
MADE ELECTRODE SHALL BE IN ACCORDANCE WITH ARTICLE 250-93 OF THE NATIONAL ELECTRICAL CODE & MUST BE COPPER OR COPPER PLATED

TYPICAL STREET LIGHT DETAIL
DRAWING NO. 319

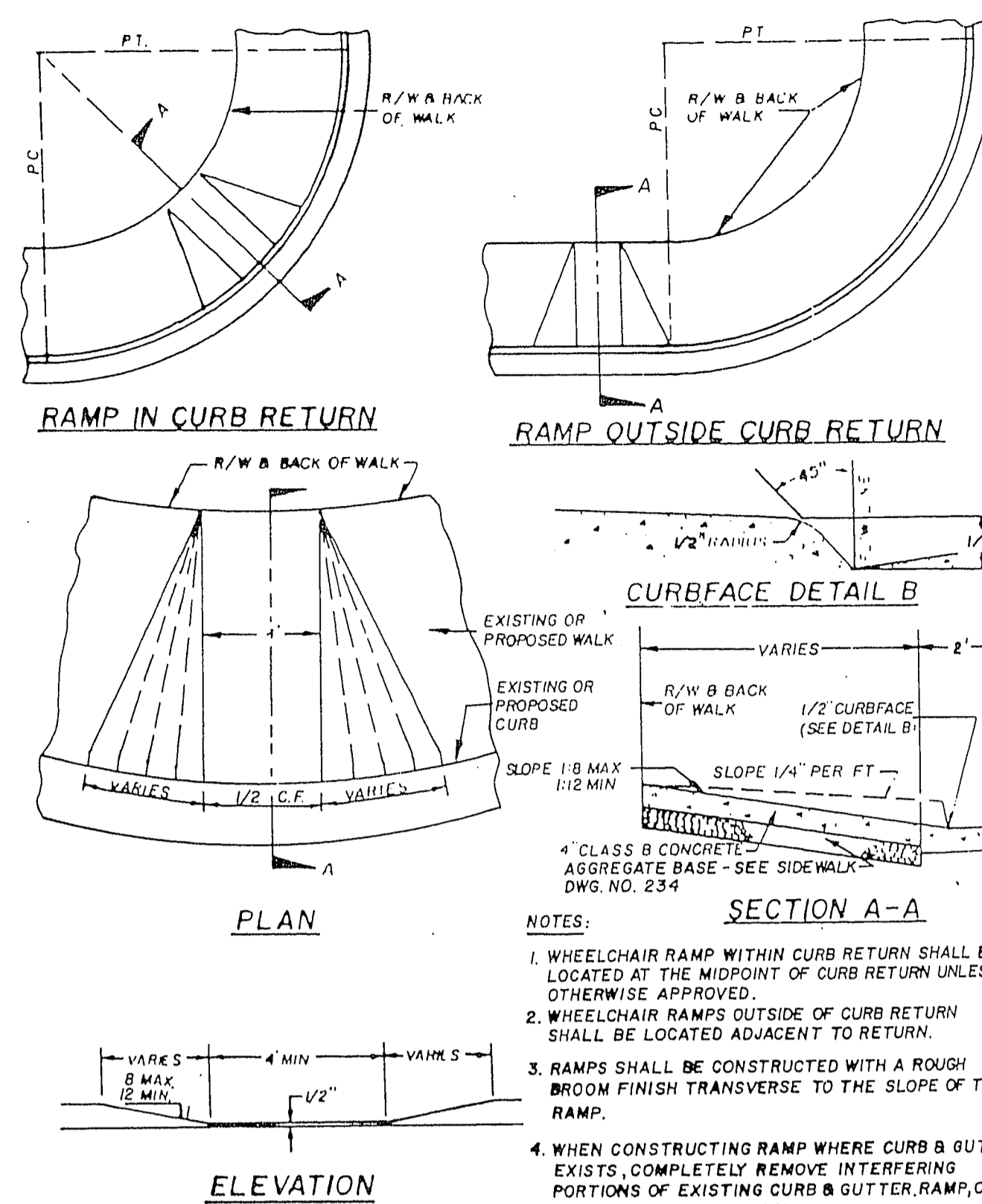


TYPICAL PROFILE AT LOCAL RESIDENTIAL STREET INTERSECTIONS

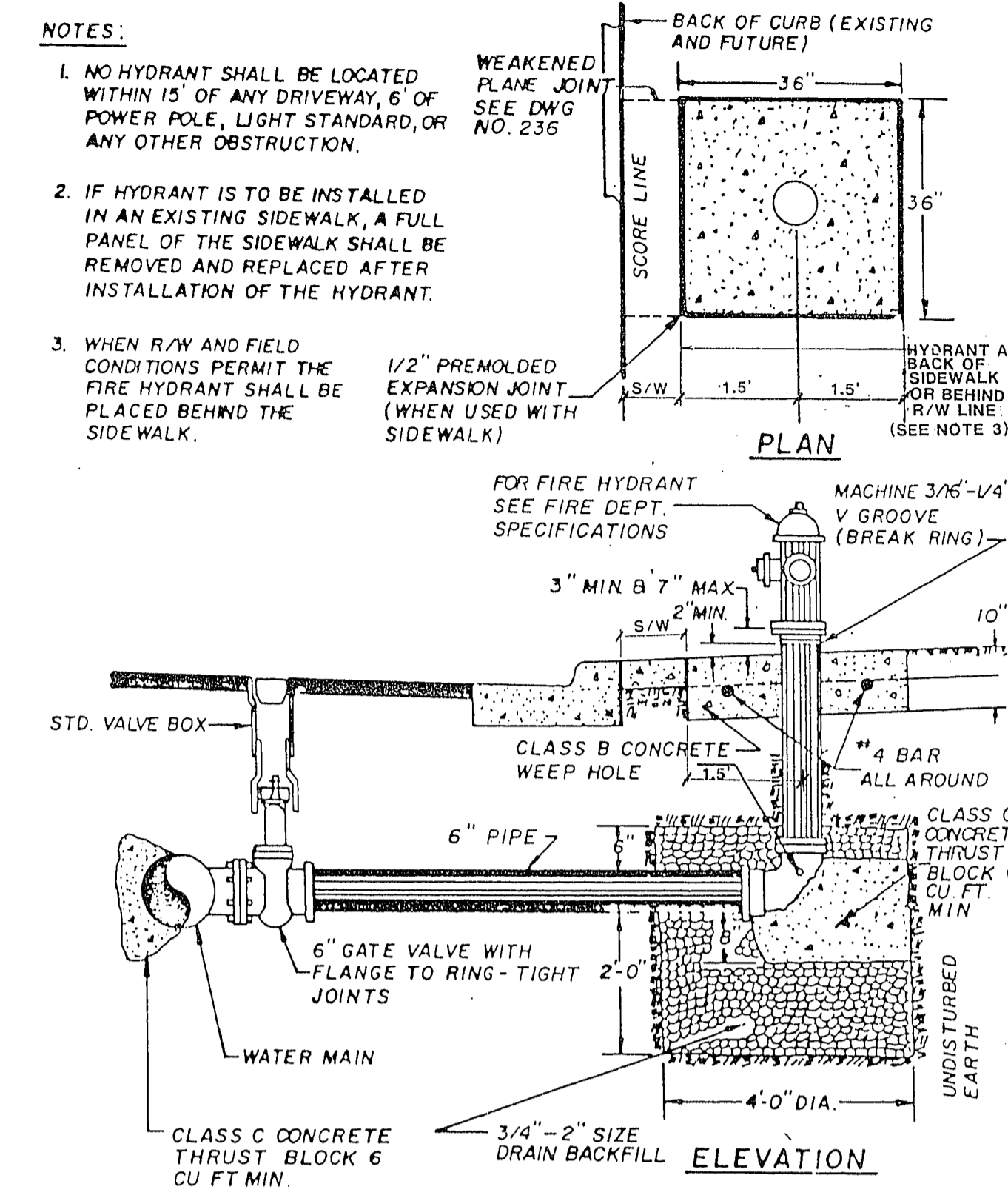
NOTES:

1. ALL CONCRETE SHALL BE CLASS B.
2. FINISHED ASPHALT CONCRETE SURFACE TO BE FLUSH WITH CROSS GUTTER LIP.
3. CONSTRUCTION OF CROSS GUTTER IS NOT ALLOWED ACROSS MAJOR COLLECTOR OR ARTERIAL STREETS.
4. ADJACENT SPANDREL SHALL BE 8" THICK P.C.C.

TYPICAL VALLEY GUTTER
DRAWING NO. 228



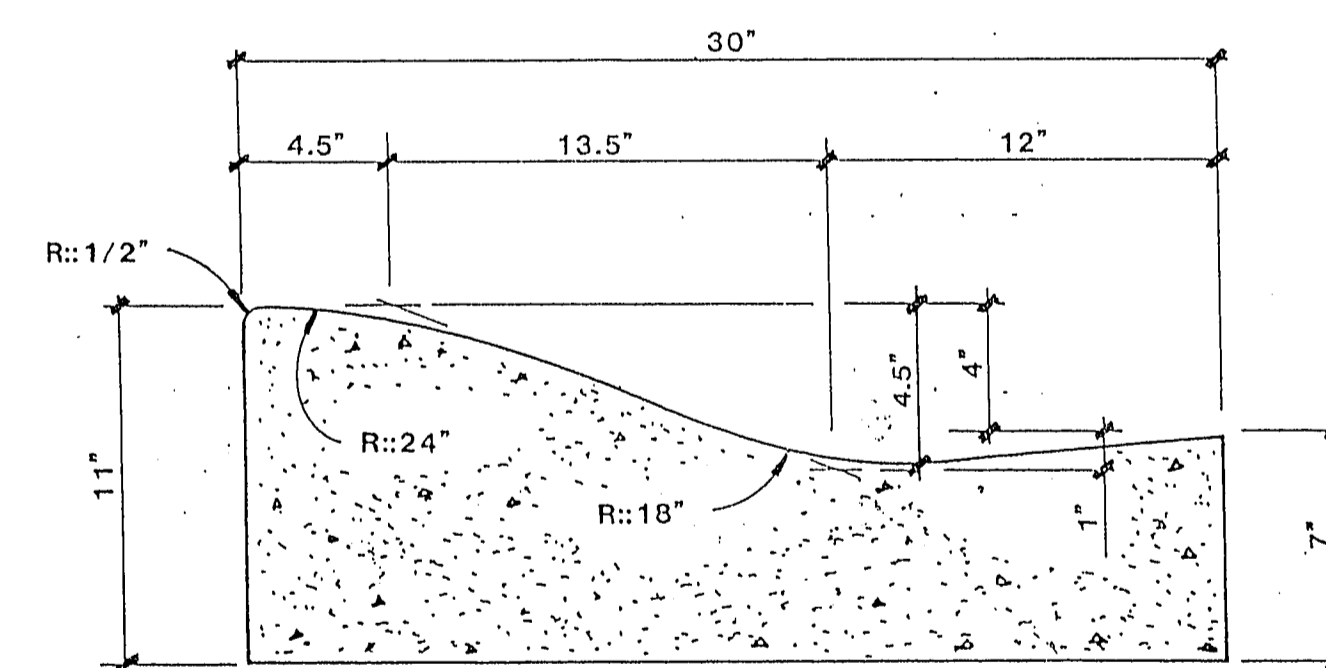
TYPICAL WHEELCHAIR RAMP
DRAWING NO. 235



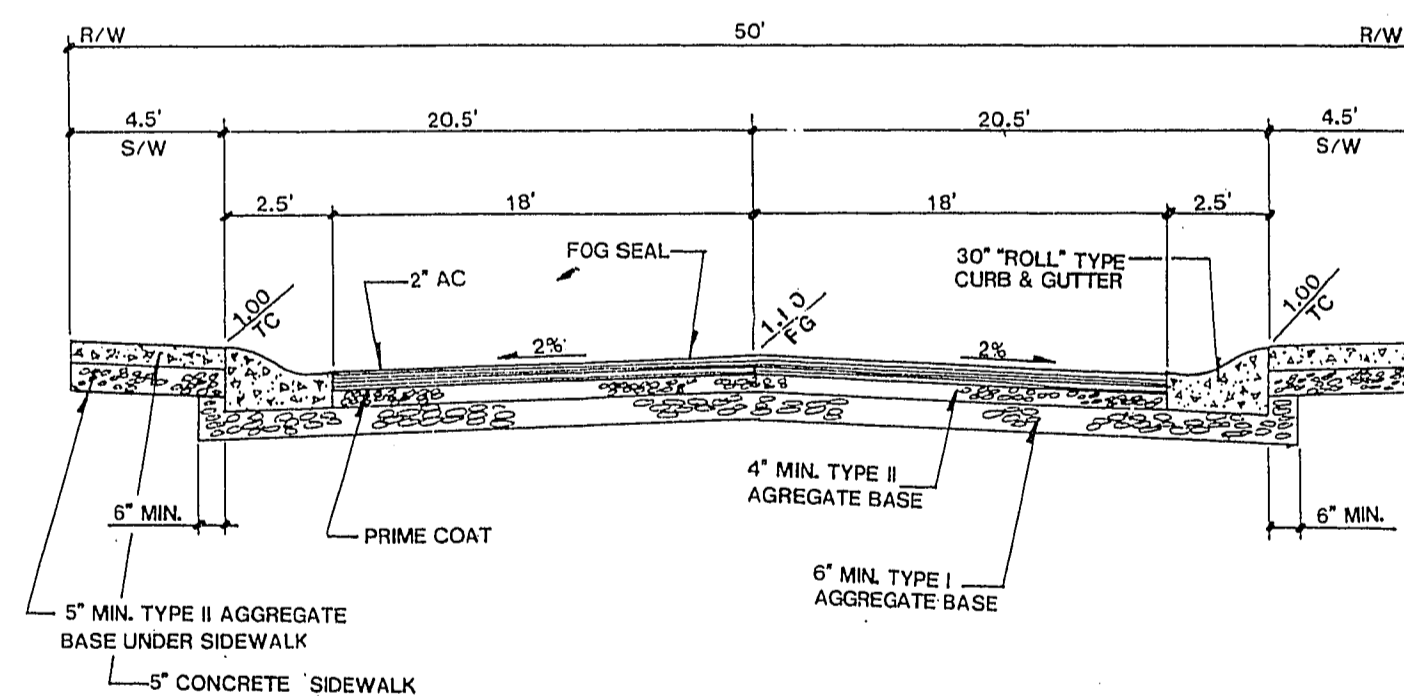
NOTES:

1. NO HYDRANT SHALL BE LOCATED WITHIN 15' OF ANY DRIVEWAY, 6' OF POWER POLE, LIGHT STANDARD, OR ANY OTHER OBSTRUCTION.
2. IF HYDRANT IS TO BE INSTALLED IN AN EXISTING SIDEWALK, A FULL PANEL OF THE SIDEWALK SHALL BE REMOVED AND REPLACED AFTER INSTALLATION OF THE HYDRANT.
3. WHEN R/W AND FIELD CONDITIONS PERMIT THE FIRE HYDRANT SHALL BE PLACED BEHIND THE SIDEWALK.

TYPICAL FIRE HYDRANT DETAIL
DRAWING NO. 516



TYPICAL "ROLL" TYPE CURB & GUTTER DETAIL
DRAWING NO. 217



NOTES:

1. NATIVE MATERIAL TO BE PROCESSED IN ACCORDANCE WITH CLV "STATEMENT OF POLICY FOR USE OF NATIVE MATERIAL IN LIEU OF IMPORTED TYPE I BASE FOR DEDICATED STREETS" DATED JULY 25, 1984;
2. 6" MINIMUM TYPE I OR TYPE II GRAVEL BASE UNDER CURB AND GUTTER.
3. A.C. PAVEMENT TO BE 1/2" (MIN) ABOVE LIP OF GUTTER AFTER COMPACTION.

TYPICAL 50' STREET SECTION W/30" "ROLL" CURB & GUTTER

REVISION	BY	DATE

ES ENGINEERS & SURVEYORS INC.
100 N. ...
STATE OF ...
PAULE VALENTINE
7/31/89

SUBMITTED BY ...

DETAIL SHEET

SOUTH SHORES RAMPART UNIT NO. 2

1-800-227-2600
UNDERGROUND SERVICE UNIT

Call before you Dig.

NO. 5332
BY T. MARRIJO
DATE 7-89
SCALE NONE

SHEET 2 OF 8 SHEETS