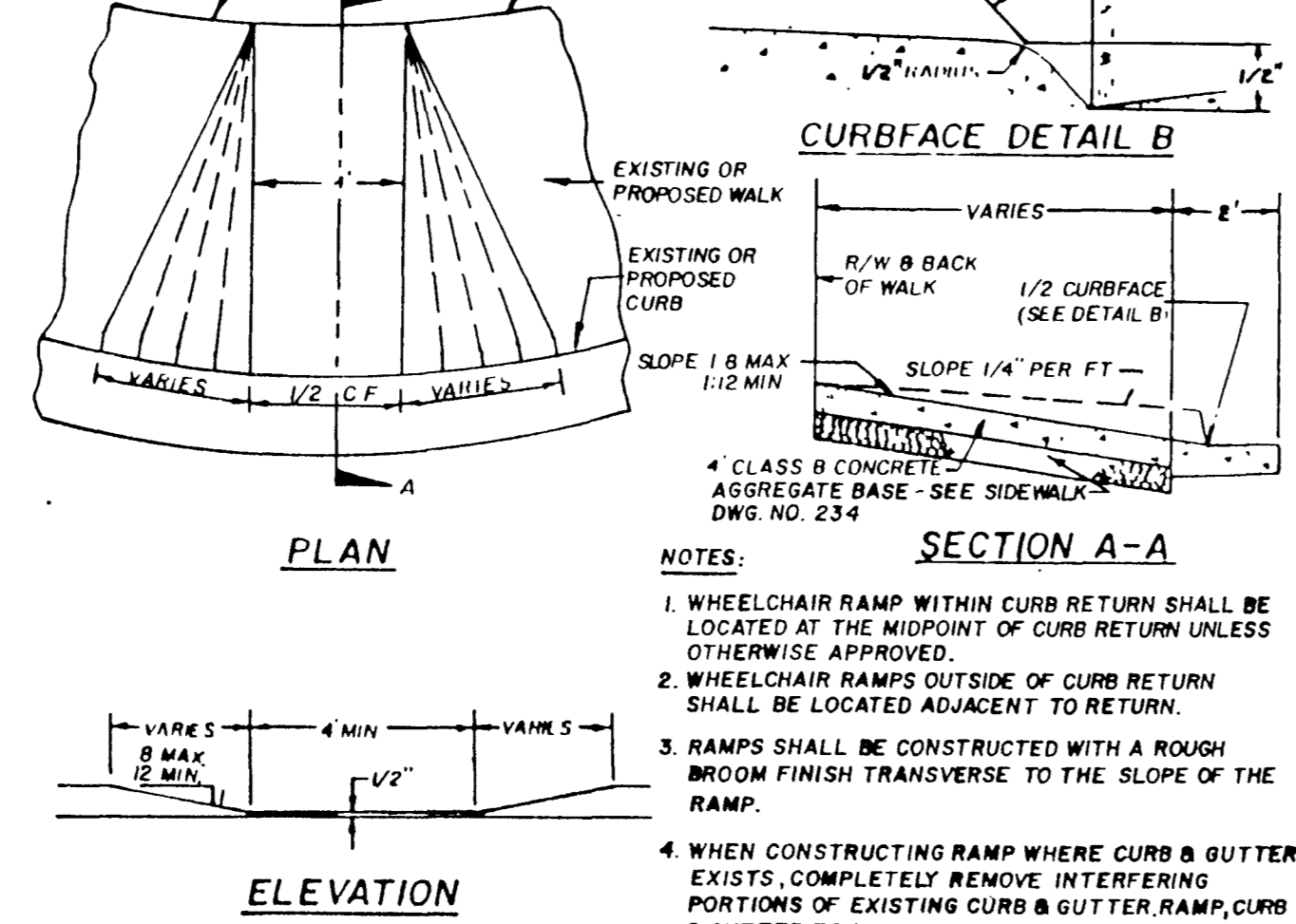
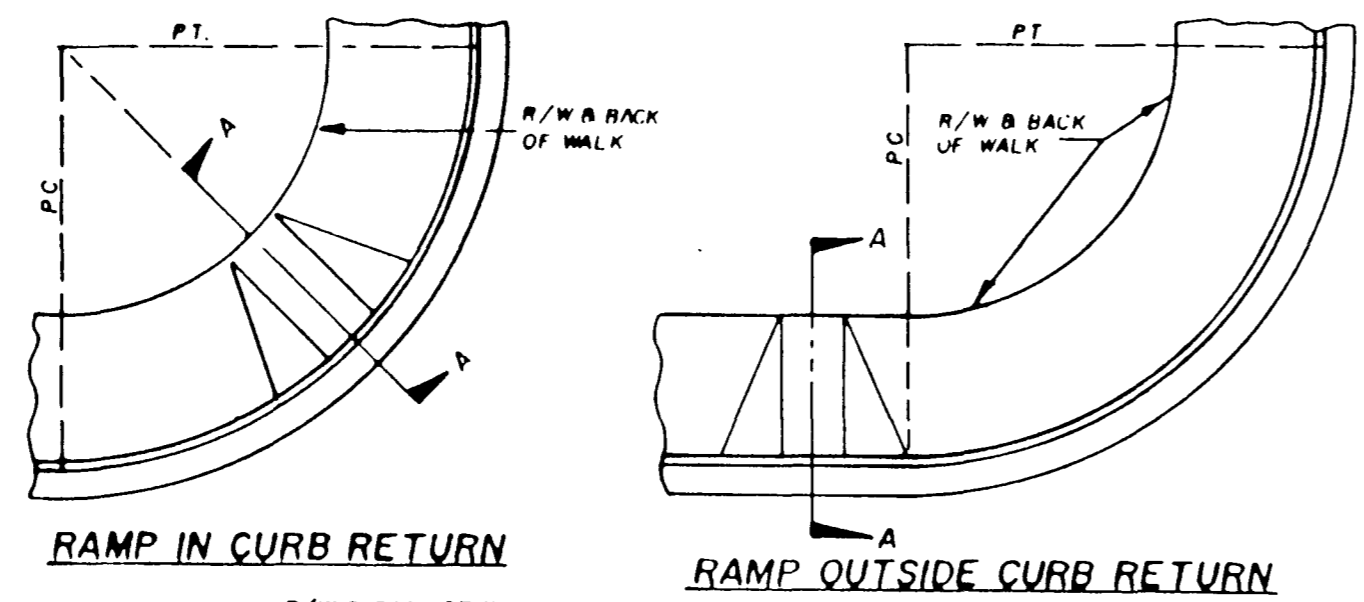
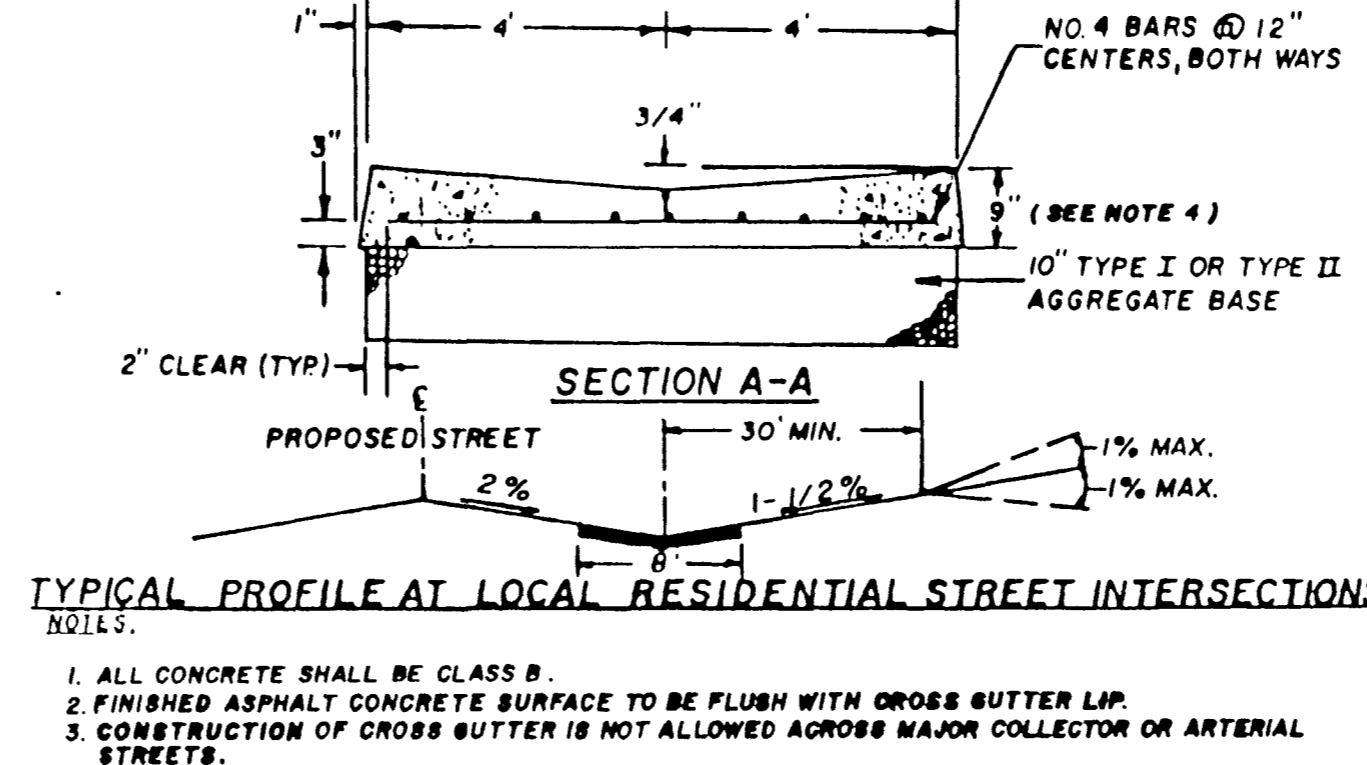
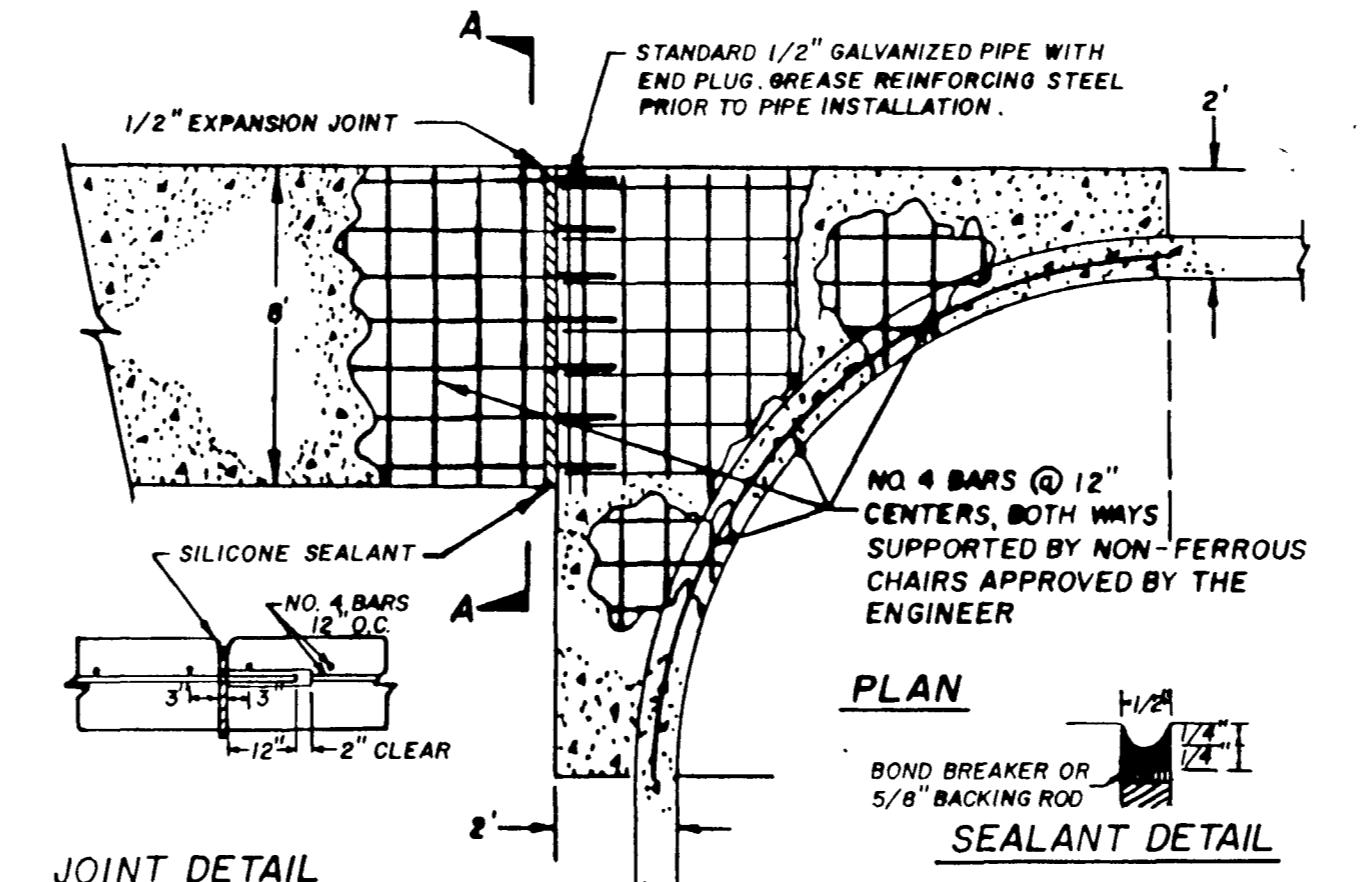


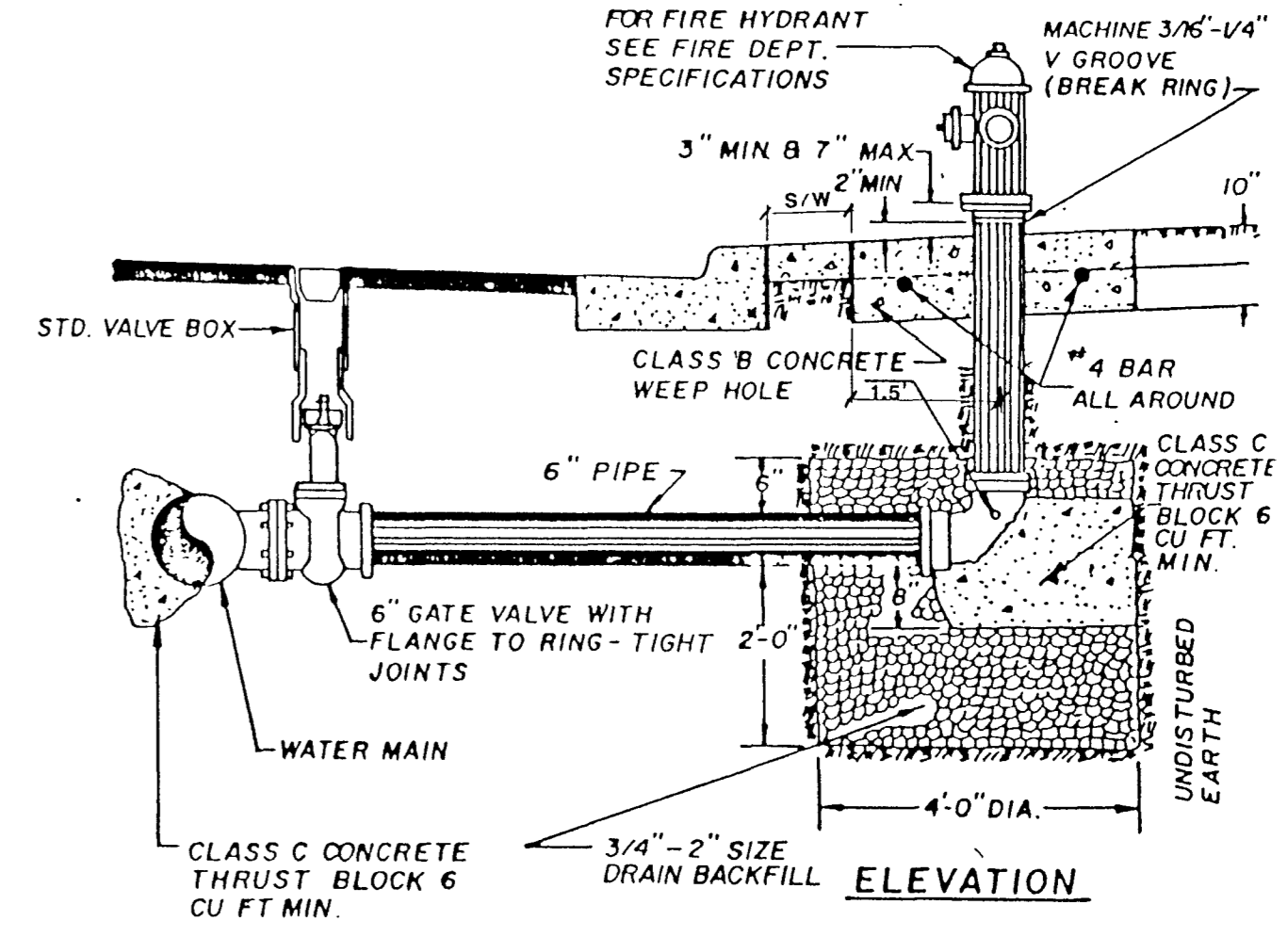
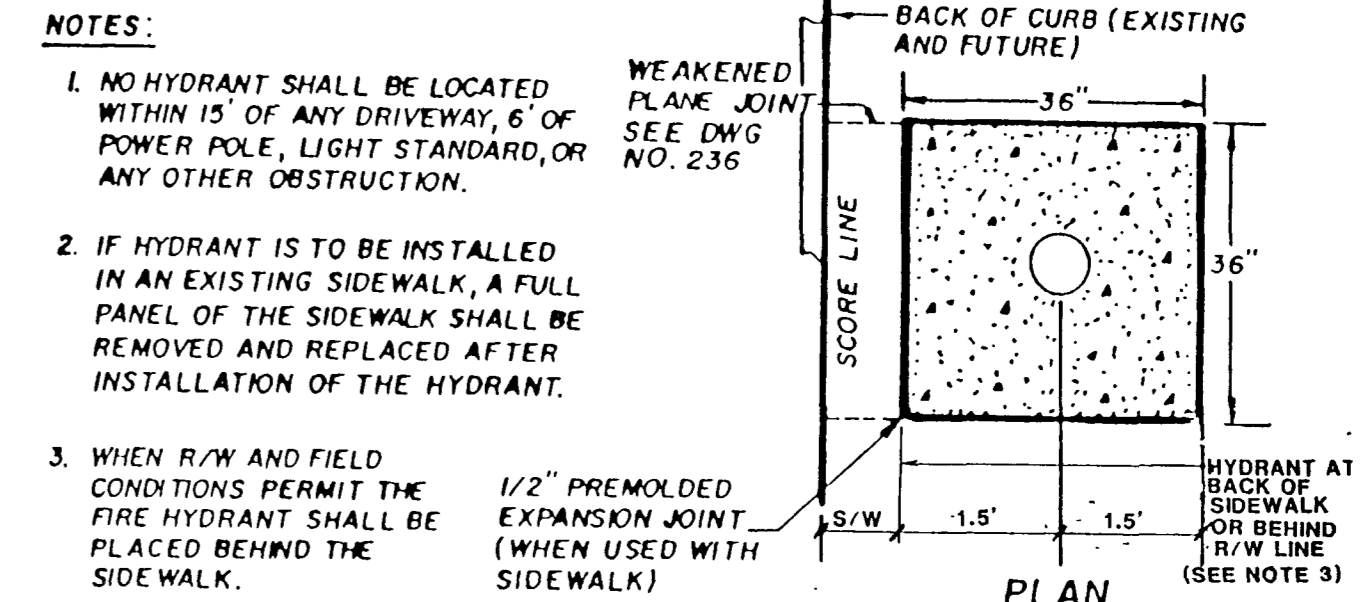
TYPICAL STREET LIGHT DETAIL
DRAWING NO. 319



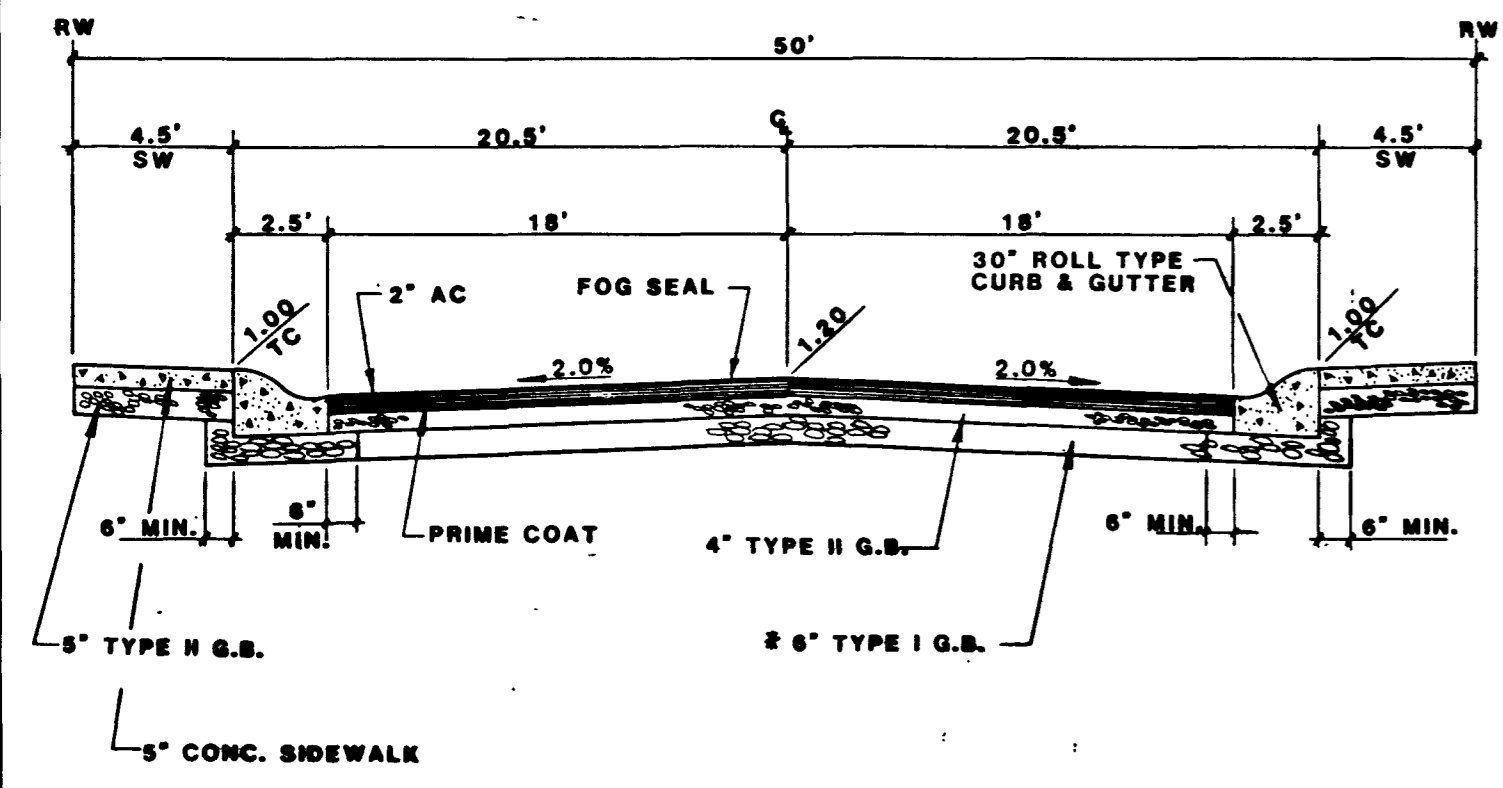
TYPICAL WHEELCHAIR RAMP DETAIL
DRAWING NO. 235



TYPICAL VALLEY GUTTER DETAIL
DRAWING NO. 228

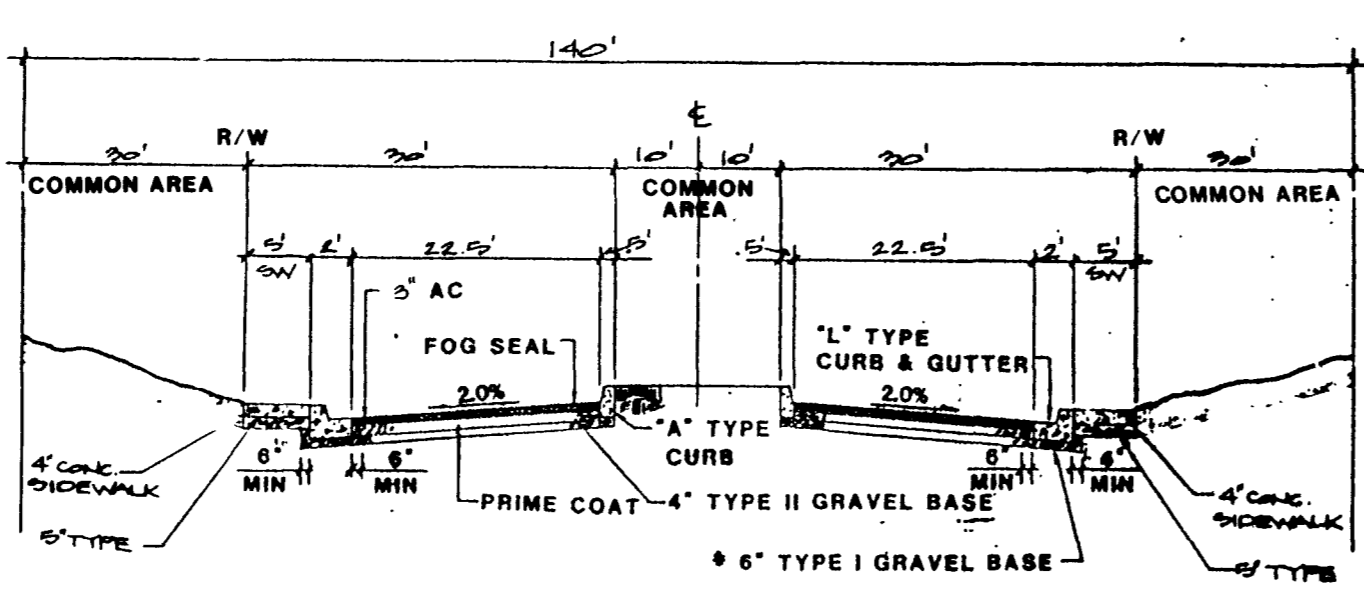


TYPICAL FIRE HYDRANT DETAIL
DRAWING NO. 516



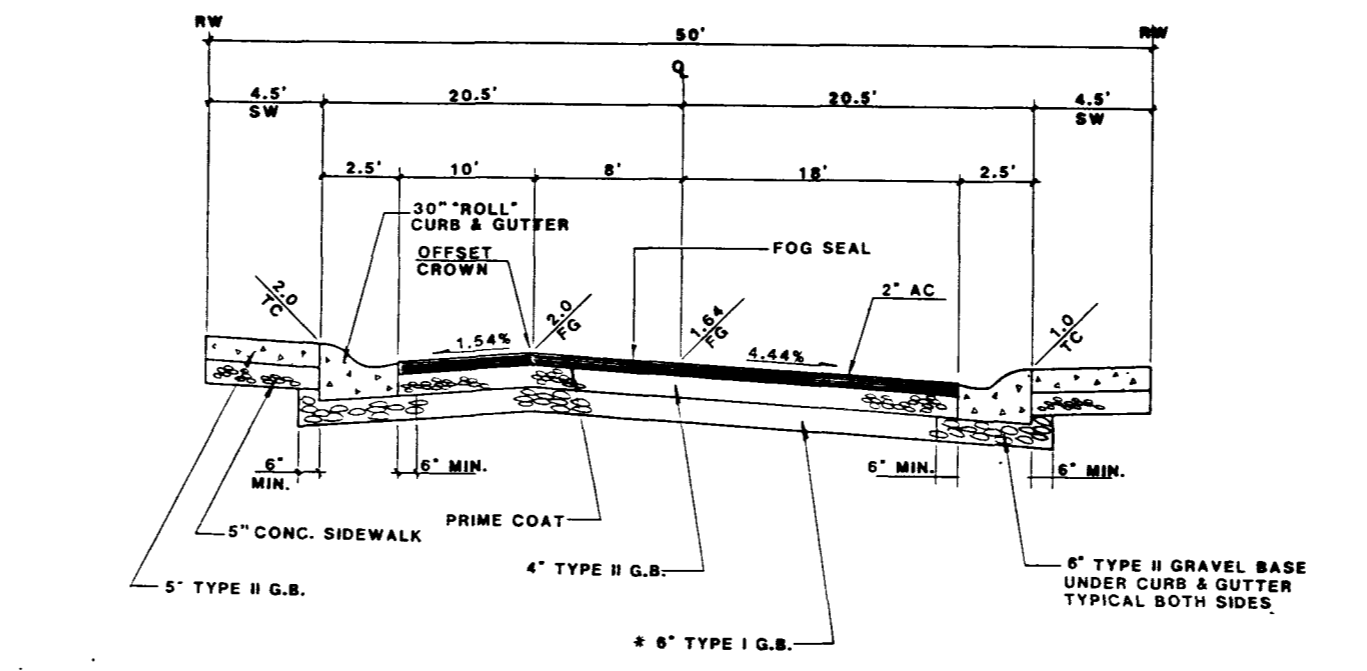
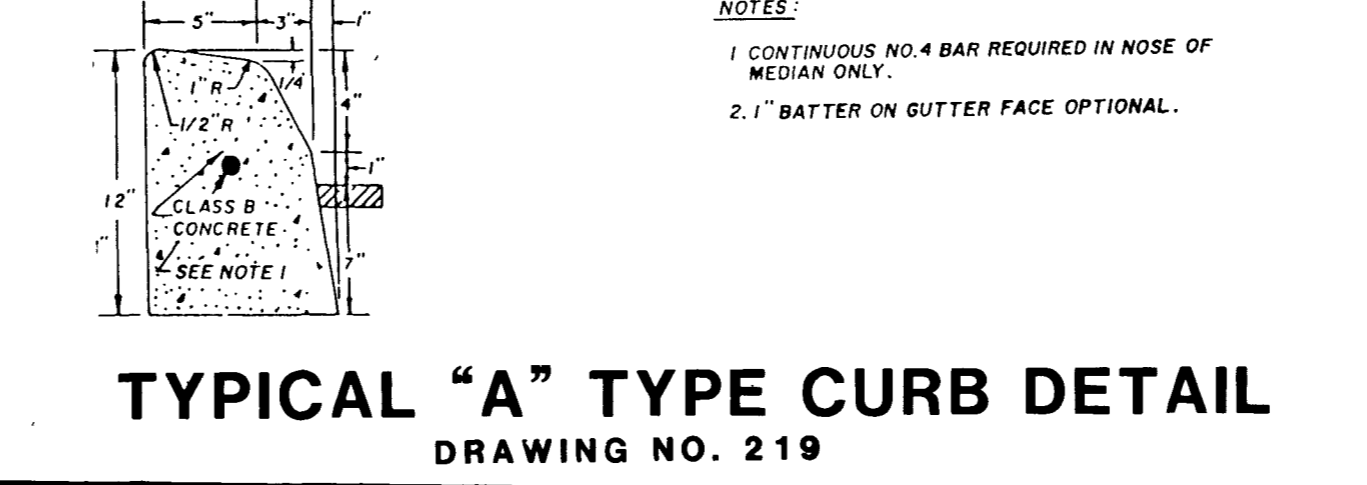
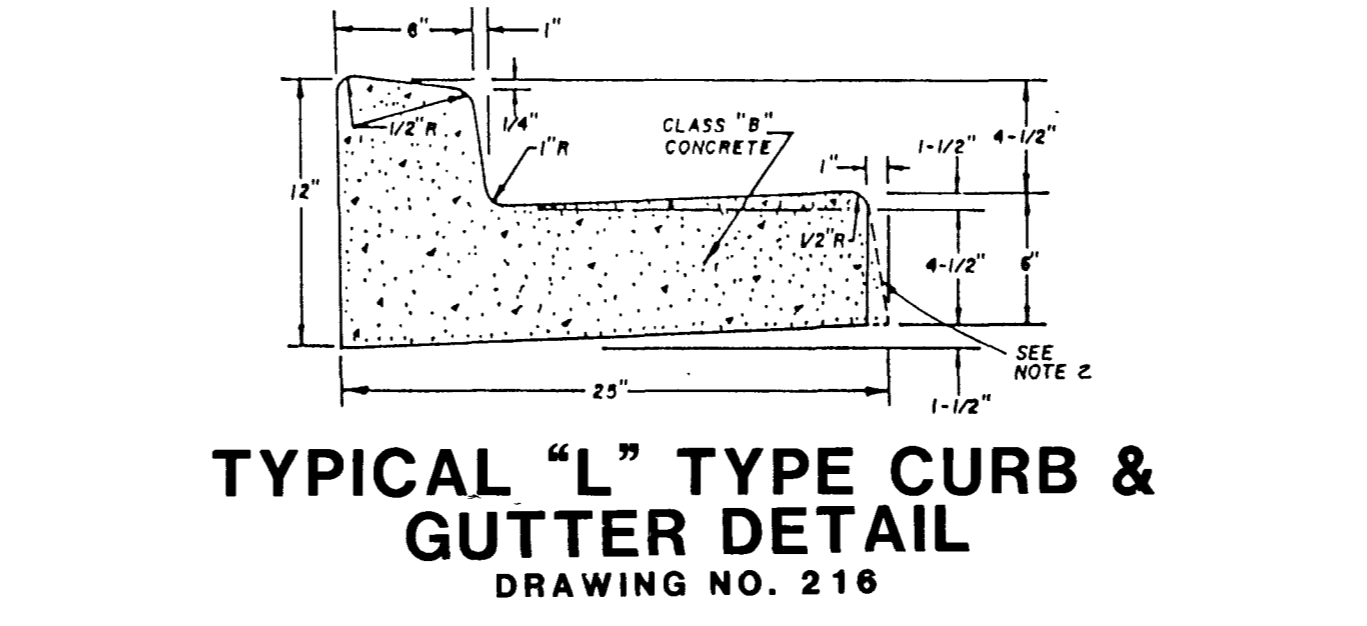
- * 1. NATIVE MATERIAL TO BE PROCESSED IN ACCORDANCE WITH CLV "STATEMENT OF POLICY FOR USE OF NATIVE MATERIAL IN LIEU OF IMPORTED TYPE I BASE FOR DEDICATED CITY STREETS" DATED JULY 25, 1984.
- 2. 6" MINIMUM TYPE I OR TYPE II GRAVEL BASE UNDER CURB AND GUTTER.
- 3. A.C. PAVEMENT TO BE 1/2" (MIN.) ABOVE LIP OR GUTTER AFTER COMPACTION.

TYPICAL 50' STREET SECTION w/30" "ROLL" CURB & GUTTER



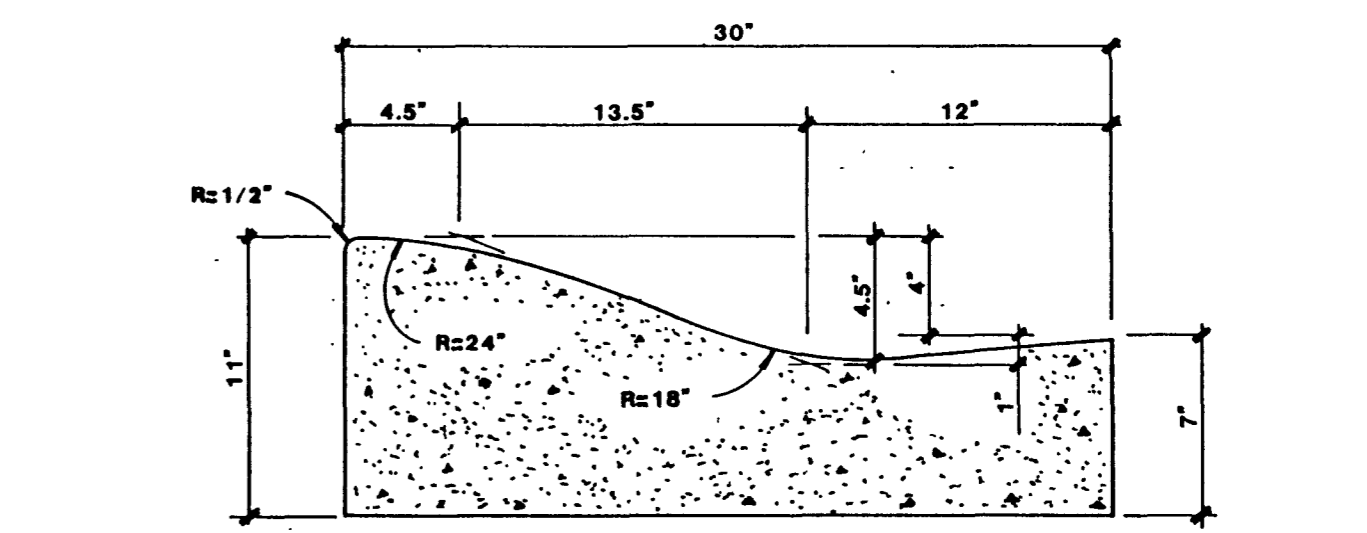
- * 1. NATIVE MATERIAL TO BE PROCESSED IN ACCORDANCE WITH CLV "STATEMENT OF POLICY FOR USE OF NATIVE MATERIAL IN LIEU OF IMPORTED TYPE I BASE FOR DEDICATED CITY STREETS" DATED JULY 25, 1984.
- 2. 6" MINIMUM TYPE I OR TYPE II GRAVEL BASE UNDER CURB AND GUTTER.
- 3. A.C. PAVEMENT TO BE 1/2" (MIN.) ABOVE LIP OR GUTTER AFTER COMPACTION.

140' ENTRANCE STREET WITH ISLAND SNOWMASS DRIVE

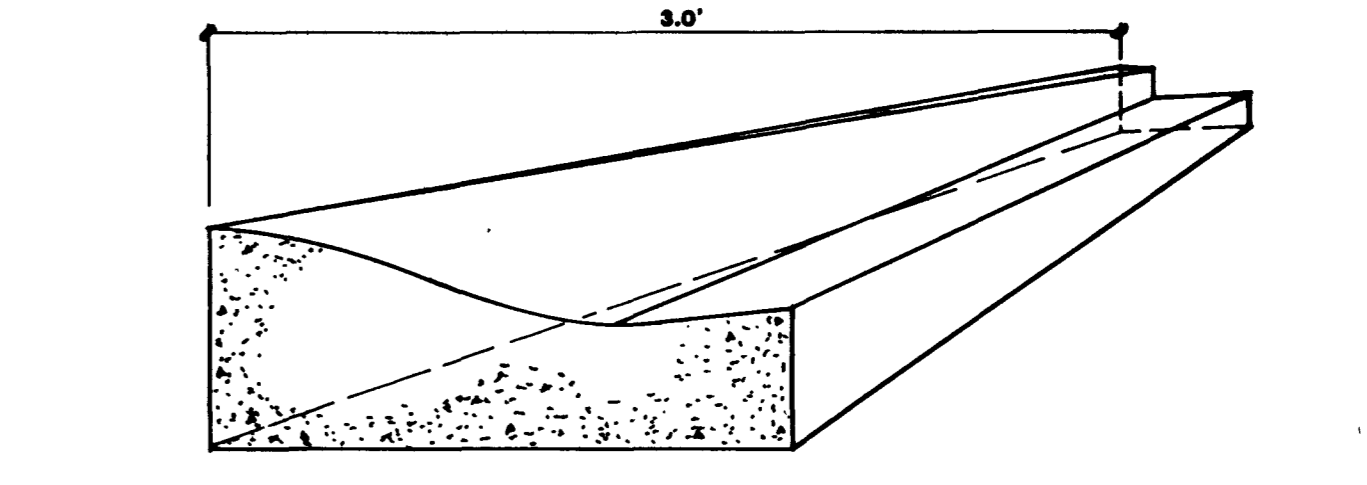


- 1. NATIVE MATERIAL TO BE PROCESSED IN ACCORDANCE WITH CLV "STATEMENT OF POLICY FOR USE OF NATIVE MATERIAL IN LIEU OF IMPORTED TYPE I BASE FOR DEDICATED CITY STREETS" DATED JULY 25, 1984.
- 2. 6" MINIMUM TYPE I OR TYPE II GRAVEL BASE UNDER CURB AND GUTTER.
- 3. A.C. PAVEMENT TO BE 1/2" (MIN.) ABOVE LIP OR GUTTER AFTER COMPACTION.

TYPICAL 50' CROSSFALL STREET SECTION SNOWMASS DRIVE



TYPICAL "ROLL" TYPE CURB & GUTTER DETAIL



TYPICAL CURB TRANSITION DETAIL

REVISION	DATE	BY	REVISION
1	7/11/84	TSHA	REVISED UNIT STREET DETAIL
2	1/22/85	TSA	REVISED UNIT STREET DETAIL

ES/ENGINEERS & SURVEYORS INC.
701 B.W. CAROLAN BLVD. SUITE 17002, ANCHORAGE, ALASKA 99503

STATE OF ALASKA
PAUL VALENTE
REGISTERED PROFESSIONAL ENGINEER
No. 12189

SUBMITTED BY:
Paul C. [Signature]

DETAIL SHEET

SOUTH SHORES RAMPART UNIT NO. 1

TITLE

PROJECT

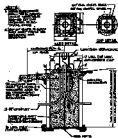
WO NO. 5331

BY D. GERRA

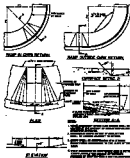
DATE 4-89

SCALE NONE

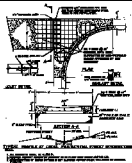
SHEET 2 OF 11 SHEETS



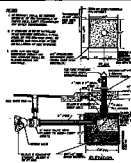
TYPICAL STREET LIGHT DETAIL
DRAWING NO. 119



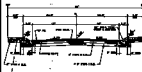
TYPICAL WHEELCHAIR RAMP DETAIL
DRAWING NO. 122



TYPICAL VALLEY GUTTER DETAIL
DRAWING NO. 123



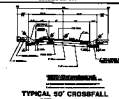
TYPICAL FIRE HYDRANT DETAIL
DRAWING NO. 124



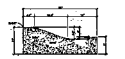
**TYPICAL 50' STREET SECTION
w/30' "ROLL" CURB & GUTTER**



140' ENTRANCE STREET WITH ISLAND
DRAWING NO. 125



**TYPICAL 50' CROSSFALL
STREET SECTION**
DRAWING NO. 126



TYPICAL "ROLL" TYPE CURB & GUTTER DETAIL



TYPICAL CURB TRANSITION DETAIL

1. 1/2" ...
 2. 1/2" ...
 3. 1/2" ...
 4. 1/2" ...
 5. 1/2" ...
 6. 1/2" ...
 7. 1/2" ...
 8. 1/2" ...
 9. 1/2" ...
 10. 1/2" ...
 11. 1/2" ...
 12. 1/2" ...
 13. 1/2" ...
 14. 1/2" ...
 15. 1/2" ...
 16. 1/2" ...
 17. 1/2" ...
 18. 1/2" ...
 19. 1/2" ...
 20. 1/2" ...
 21. 1/2" ...
 22. 1/2" ...
 23. 1/2" ...
 24. 1/2" ...
 25. 1/2" ...
 26. 1/2" ...
 27. 1/2" ...
 28. 1/2" ...
 29. 1/2" ...
 30. 1/2" ...
 31. 1/2" ...
 32. 1/2" ...
 33. 1/2" ...
 34. 1/2" ...
 35. 1/2" ...
 36. 1/2" ...
 37. 1/2" ...
 38. 1/2" ...
 39. 1/2" ...
 40. 1/2" ...
 41. 1/2" ...
 42. 1/2" ...
 43. 1/2" ...
 44. 1/2" ...
 45. 1/2" ...
 46. 1/2" ...
 47. 1/2" ...
 48. 1/2" ...
 49. 1/2" ...
 50. 1/2" ...
 51. 1/2" ...
 52. 1/2" ...
 53. 1/2" ...
 54. 1/2" ...
 55. 1/2" ...
 56. 1/2" ...
 57. 1/2" ...
 58. 1/2" ...
 59. 1/2" ...
 60. 1/2" ...
 61. 1/2" ...
 62. 1/2" ...
 63. 1/2" ...
 64. 1/2" ...
 65. 1/2" ...
 66. 1/2" ...
 67. 1/2" ...
 68. 1/2" ...
 69. 1/2" ...
 70. 1/2" ...
 71. 1/2" ...
 72. 1/2" ...
 73. 1/2" ...
 74. 1/2" ...
 75. 1/2" ...
 76. 1/2" ...
 77. 1/2" ...
 78. 1/2" ...
 79. 1/2" ...
 80. 1/2" ...
 81. 1/2" ...
 82. 1/2" ...
 83. 1/2" ...
 84. 1/2" ...
 85. 1/2" ...
 86. 1/2" ...
 87. 1/2" ...
 88. 1/2" ...
 89. 1/2" ...
 90. 1/2" ...
 91. 1/2" ...
 92. 1/2" ...
 93. 1/2" ...
 94. 1/2" ...
 95. 1/2" ...
 96. 1/2" ...
 97. 1/2" ...
 98. 1/2" ...
 99. 1/2" ...
 100. 1/2" ...

ES&S ENGINEERING
 1000 ...
 DETAIL SHEET
 SOUTH SHORES RAMPAUT UNIT NO. 1
 2
 1077-010-1