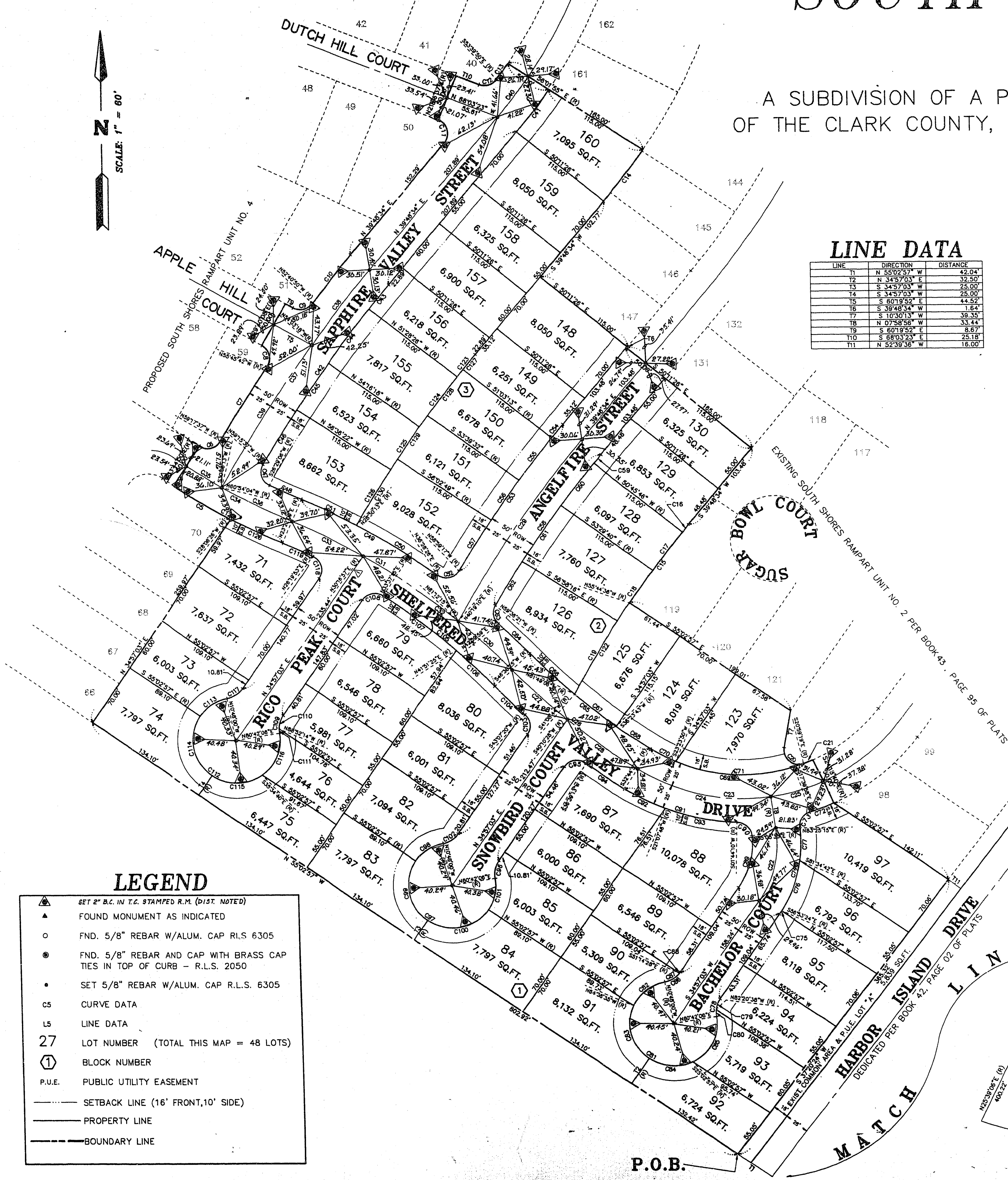
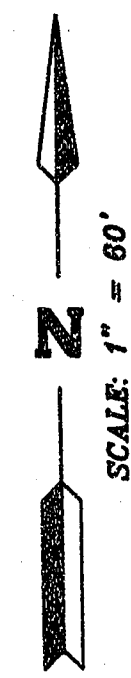


# SOUTH SHORES RAMPART UNIT 3

A SUBDIVISION OF A PORTION OF LOT 9 AS SHOWN BY MAP IN THE OFFICE  
OF THE CLARK COUNTY, NEVADA RECORDER IN BOOK 42 ON PAGE 02 OF PLATS  
**MONUMENT TIE MAP**



**LINE DATA**

LINE	DIRECTION	DISTANCE
L1	N 55°02'37\"	42.04
L2	N 34°37'03\"	17.50
L3	S 34°37'03\"	25.00
L4	S 34°37'03\"	25.00
L5	S 80°19'52\"	44.52
L6	S 39°48'34\"	1.64
L7	S 10°50'13\"	39.33
L8	N 07°58'58\"	33.44
L9	S 80°19'52\"	8.67
L10	S 80°19'52\"	23.18
L11	N 52°39'38\"	16.00

**CURVE DATA**

CURVE	RADIUS	LENGTH	TANGENT	DELTA
C1	1450.00	558.48	289.23	29°24'00"
C2	4000.00	2093.83	1046.92	29°24'00"
C3	3760.00	2350.48	1215.08	35°49'01"
C4	1750.00	348.80	174.40	114°14'17"
C5	705.00	68.89	34.42	05°38'24"
C6	15.50	25.17	12.58	83°02'28"
C7	1499.81	92.44	46.22	03°37'59"
C8	15.50	25.58	12.79	84°41'10"
C9	15.50	29.18	14.59	82°20'28"
C10	1499.81	65.17	32.58	02°29'24"
C11	15.50	25.45	12.72	82°20'28"
C12	15.50	29.18	14.59	82°20'28"
C13	487.88	20.57	10.29	02°22'05"
C14	882.88	87.58	43.79	05°59'59"
C15	1054.61	102.21	51.11	05°33'10"
C16	1054.61	102.21	51.11	05°33'10"
C17	1054.61	63.99	32.00	03°28'38"
C18	1054.61	63.99	32.00	03°28'38"
C19	1054.61	89.22	44.61	04°30'51"
C20	15.00	31.81	15.91	121°29'32"
C21	175.00	10.15	5.08	03°19'22"
C22	107.68	80.89	40.45	02°55'59"
C23	200.00	198.18	108.73	07°03'38"
C24	200.00	142.18	71.09	04°43'53"
C25	200.00	57.00	28.50	18°19'45"
C26	880.00	184.48	92.24	13°51'27"
C27	880.00	76.34	38.17	06°23'56"
C28	880.00	88.12	44.06	07°25'31"
C29	1184.61	229.83	114.92	11°00'49"
C30	880.00	74.82	37.41	07°25'31"
C31	880.00	201.17	100.59	16°57'00"
C32	880.00	183.74	91.87	16°19'22"
C33	880.00	83.00	41.50	08°54'49"
C34	880.00	123.17	61.59	10°22'42"
C35	880.00	43.20	21.60	05°44'04"
C36	880.00	78.03	39.02	08°54'49"
C37	1474.81	275.85	137.93	10°42'36"
C38	1474.81	99.45	49.73	03°51'51"
C39	1474.81	176.20	88.10	08°50'48"
C40	522.88	53.29	26.65	05°50'29"
C41	541.88	55.84	27.92	05°50'29"
C42	1449.61	229.47	114.74	09°04'11"
C43	1449.61	36.47	18.24	07°17'00"
C44	1449.61	36.47	18.24	07°17'00"
C45	1449.61	59.07	29.54	02°20'05"
C46	1449.61	67.15	33.58	02°20'05"
C47	15.50	25.50	12.75	84°13'17"
C48	855.00	33.82	16.91	01°02'57"
C49	705.00	101.25	50.63	13°09'18"
C50	705.00	98.07	49.04	07°58'14"
C51	705.00	63.18	31.59	05°08'04"
C52	15.50	25.82	12.91	85°27'43"
C53	1219.61	187.26	93.63	08°47'51"
C54	1219.61	187.26	93.63	08°47'51"
C55	1219.61	55.45	27.73	05°38'18"
C56	1219.61	187.26	93.63	08°47'51"
C57	1219.61	187.26	93.63	08°47'51"
C58	1169.61	192.20	96.10	09°24'54"
C59	1169.61	118.87	59.44	05°04'20"
C60	1169.61	55.78	27.89	02°43'54"
C61	1169.61	70.97	35.49	05°26'36"
C62	1169.61	53.79	26.89	03°51'51"
C63	15.50	20.94	10.47	77°37'41"
C64	705.00	44.38	22.19	03°51'51"
C65	650.00	158.42	79.21	13°51'27"

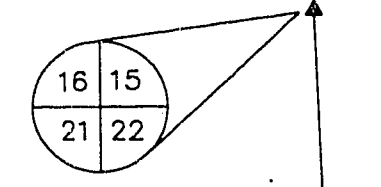
**CURVE DATA**

CURVE	RADIUS	LENGTH	TANGENT	DELTA
C66	855.00	82.43	41.22	31°24'
C67	855.00	54.31	27.17	04°43'01"
C68	855.00	41.88	20.94	03°38'48"
C69	175.00	164.13	82.07	3°24'18"
C70	175.00	28.58	14.29	09°21'08"
C71	175.00	135.89	67.95	44°23'08"
C72	225.00	28.10	14.05	05°38'42"
C73	15.50	21.35	10.68	82°58'47"
C74	132.88	86.17	43.09	41°31'48"
C75	132.88	4.28	2.13	01°50'27"
C76	132.88	27.17	13.59	24°41'21"
C77	132.88	34.74	17.37	15°00'03"
C78	25.50	19.68	9.84	44°14'57"
C79	12.15	6.19	3.10	22°17'41"
C80	25.50	7.55	3.80	18°57'18"
C81	45.00	210.88	105.44	288°29'54"
C82	45.00	42.29	21.15	31°30'30"
C83	45.00	63.15	31.58	80°24'21"
C84	45.00	42.29	21.15	60°00'00"
C85	45.00	56.32	28.16	74°14'59"
C86	25.50	19.68	9.84	44°14'57"
C87	25.50	18.00	9.00	40°28'29"
C88	25.50	1.89	0.95	03°48'28"
C89	82.88	57.52	28.76	38°31'28"
C90	15.50	22.55	11.28	83°21'22"
C91	225.00	121.79	60.89	31°00'48"
C92	225.00	45.83	22.92	11°37'11"
C93	225.00	78.16	39.08	19°23'37"
C94	705.00	48.04	24.02	03°54'18"
C95	15.50	24.81	12.41	81°21'10"
C96	25.50	18.89	9.45	44°14'57"
C97	45.00	210.88	105.44	288°29'54"
C98	45.00	34.75	17.38	44°14'57"
C99	45.00	70.89	35.45	80°00'00"
C100	45.00	143.69	71.85	150°00'00"
C101	45.00	34.75	17.38	44°14'57"
C102	25.50	19.68	9.84	44°14'57"
C103	15.50	22.14	11.07	81°18'43"
C104	705.00	42.87	21.44	03°29'04"
C105	148.45	74.55	37.28	05°50'29"
C106	855.00	54.30	27.17	04°43'01"
C107	855.00	94.15	47.08	08°14'08"
C108	115.50	23.89	11.95	69°40'12"
C109	18.69	19.37	9.69	44°14'57"
C110	25.50	15.05	7.53	19°25'40"
C111	25.50	4.84	2.42	10°25'40"
C112	45.00	210.88	105.44	288°29'54"
C113	45.00	34.75	17.38	44°14'57"
C114	45.00	70.89	35.45	80°00'00"
C115	45.00	56.32	28.16	74°14'59"
C116	45.00	24.02	12.01	03°21'13"
C117	25.50	19.68	9.84	44°14'57"
C118	65.00	26.69	13.35	88°37'04"
C119	65.00	33.88	16.94	02°54'44"
C120	705.00	58.71	29.37	04°48'18"
C121	705.00	127.70	63.85	112°41'42"
C122	1054.61	111.82	55.91	06°04'20"
C123	1334.61	28.89	14.45	01°27'51"
C124	1334.61	65.11	32.56	02°20'05"
C125	1334.61	54.38	27.19	02°20'05"
C126	1334.61	55.39	27.70	02°20'05"
C127	1334.61	50.11	25.06	02°20'05"
C128	1334.61	60.88	30.44	02°20'05"
C129	1334.61	61.81	30.91	02°20'05"
C130	1334.61	61.41	30.71	02°20'05"

**LEGEND**

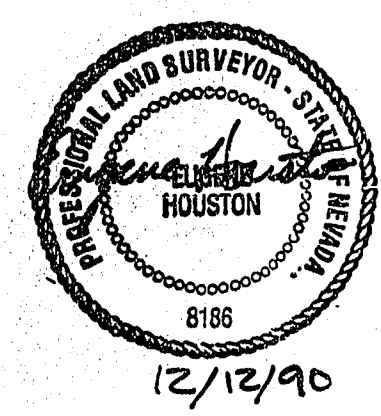
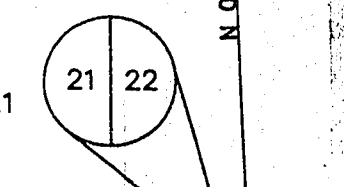
- ▲ SET 2" B.C. IN T.C. STAMPED R.M. (DIST. NOTED)
- ▲ FOUND MONUMENT AS INDICATED
- FND. 5/8" REBAR W/ALUM. CAP R.L.S. 6305
- FND. 5/8" REBAR AND CAP WITH BRASS CAP TIES IN TOP OF CURB - R.L.S. 2050
- SET 5/8" REBAR W/ALUM. CAP R.L.S. 6305
- CS CURVE DATA
- LS LINE DATA
- 27 LOT NUMBER (TOTAL THIS MAP = 48 LOTS)
- ① BLOCK NUMBER
- P.U.E. PUBLIC UTILITY EASEMENT
- SETBACK LINE (16' FRONT, 10' SIDE)
- PROPERTY LINE
- BOUNDARY LINE

FND. PK NAIL & SHINER  
NE CORNER SECT. 21



NOTE: TIE IS NOT TO SCALE

FND. HUB & TACK  
E 1/4 CORNER SECT. 21



I, EUGENE HOUSTON, A DULY REGISTERED LAND SURVEYOR IN THE STATE OF NEVADA, DO HEREBY CERTIFY THAT THE MONUMENTS HAVE BEEN SET AND THE TIES ESTABLISHED AS SHOWN HEREON.

*Eugene Houston*  
EUGENE HOUSTON, P.L.S. 8188

9-6-105 Book 44 Page 52 058-4065-3